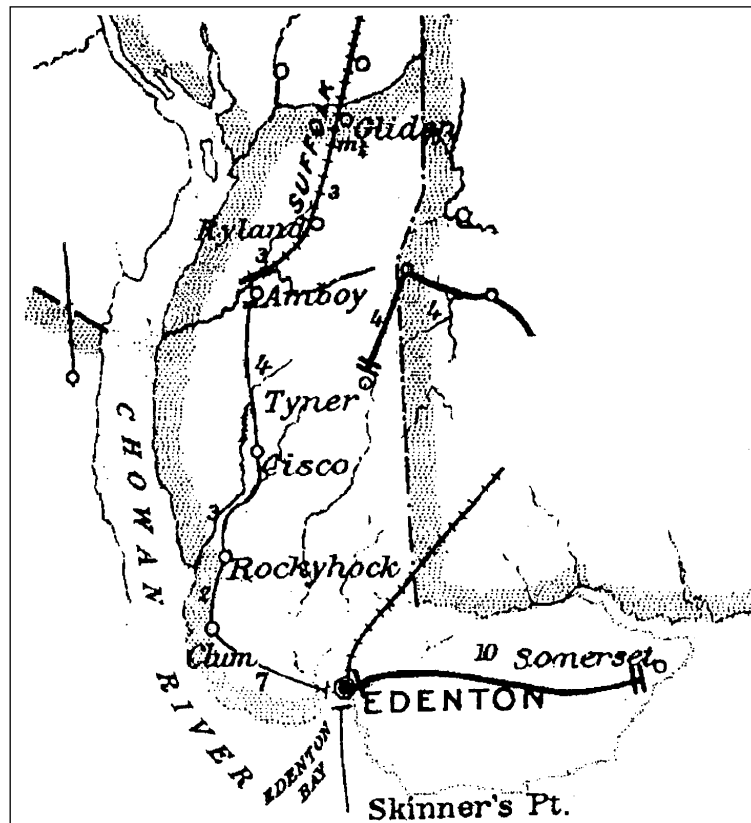


# CHOWAN COUNTY

Established 1670  
From Albemarle County

Number of Post Offices - 21  
Number with postmarks known - 13



## CHOWAN COUNTY

### Amby

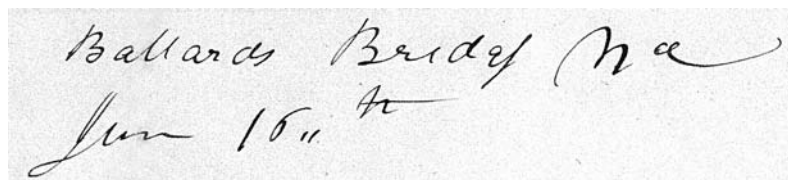
(Chowan)

John W. Howell	9 Jun 1880
W. H. Elliott	12 Jul 1883
William H. Elliott, Jr.	31 Jul 1883
Discontinued	1904
Papers to Ryland	

### Ballard's Bridge

(Chowan)

Ephraim Elliott	7 Feb 1825
William Elliott	26 Mar 1831
William R. Blanchard	11 Jun 1834
John W. Skinner	8 Mar 1837
Stephen Dolby	20 Feb 1838
Allen Small	16 Sep 1841
George M. Williams	19 Aug 1846
Thomas Cochran	9 Jul 1847
Discontinued	8 Dec 1847
Richard Woodard	20 Jan 1848
William B. Harrell	22 Feb 1850
Joseph T. Morris	5 Jul 1850
Thomas Cochran	29 Aug 1851
Joseph T. Waff	29 Sep 1851
Thomas Cochran Jr.	21 Dec 1852
Richard D. Simpson	27 Oct 1853
Thomas Evans	5 Jan 1854
John W. Nowell	13 Sep 1859
John H. Garrett	12 Mar 1861
No record of CSA operation	
Federal office discontinued	6 Dec 1866

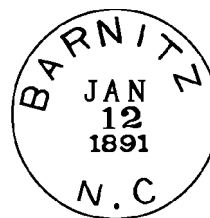


Manuscript  
1 May 1833  
16 Jun 1837

### Barnitz

(Chowan)

Augustus Holly, Jr.	2 Jan 1880
Richard Elliott	10 Jan 1891
Joseph A. Byrum	25 Jun 1892
Joseph C. Saunders	22 Jun 1893
Discontinued	22 Jun 1894
Mail to Cisco	



Type 1  
27 mm Black  
12 Jan 1891

## CHOWAN COUNTY

### Chowan

(Chowan)

William T. Woodley 9 Apr 1880  
Name changed to **Woodley** 27 Nov 1888  
Re-established 22 Jun 1904  
Edward T. Forehand 22 Jun 1904  
Discontinued 30 Mar 1907  
Mail to Tyner

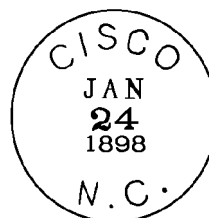


Type 1  
28.5 mm Black  
Doane Type 2-?  
30 May 1905

### Cisco

(Chowan)

Zachariah W. Evans 28 Apr 1891  
Discontinued 30 Mar 1907  
Mail to Tyner



Type 1  
27.5 mm Black  
20 Mar 1897  
24 Aug 1900

### Clum

(Chowan)

James P. Ashley 23 Dec 1897  
Discontinued 31 Oct 1902  
Mail to Edenton

### Dwight, from Perquimans County

(Chowan)

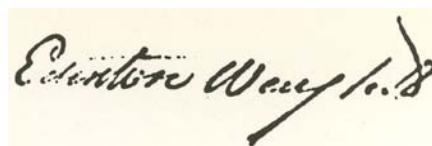
Hosea J. Lane 20 Sep 1904  
Lizzie Lane 16 Mar 1906  
Discontinued 27 Feb 1909

# CHOWAN COUNTY

## Edenton

(Chowan)

Joseph Hewes	1770-1776
William Gardiner	19 Jan 1776
Chas Bonfield	26 Dec 1777
John Mare	5 Apr 1783
Lemuel Standin	5 Aug 1786
Henderson Standin	16 Jan 1797
Henry Willis	9 May 1816
Henry Willis, Jr.	5 Apr 1817
Nathaniel Bruer	17 May 1822
Joseph N. Hoskins	20 Sep 1833
Theoderick I. Bland	15 Nov 1838
William R. Skinner	11 Feb 1846
Joseph S. Jones	11 May 1849
Joseph T. Waff	29 Sep 1851
James M. Floyd	23 Jun 1853
John C. Fleetwood	11 Dec 1855
J. C. Fleetwood, CSA	4 Jul 1861
CSA office closed on or before	30 Apr 1865
John R. McCurdy	11 Oct 1865
William E. Bond	14 Jul 1879
Oliver T. Gilbert	23 May 1881
George W. Lane	7 Aug 1881
Noah Burfoot	30 Jan 1885
Leroy L. Brinkley	24 Feb 1885
William J. Leary Sr.	14 Mar 1907
Millard F. Bond	4 Mar 1916
Miles S. Elliott, Acting	1 Jul 1924
Miles S. Elliott	11 Feb 1925
Carroll E. Kramer, Acting	18 Dec 1933
Carroll E. Kramer	31 Jan 1934
Richard D. Dixon, Sr., Acting	11 Dec 1950
Richard D. Dixon, Sr.	12 Oct 1951
David Q. Holton, Acting	31 Aug 1952
James L. Chestnut, Acting	22 Nov 1953
James L. Chestnut	23 Mar 1955
James M. Bond, Acting	30 Dec 1965
James M. Bond	21 Jul 1967
William S. Crosby Officer-In-Charge	7 Sep 1984
Howard C. Hodges	2 Feb 1985
Roy B. Ferrell Officer-In-Charge	28 Oct 1987
Robert Stephen Bennett	12 Mar 1988
Nela P. Horton Officer-In-Charge	19 Apr 1989
Teresa McMillian Officer-In-Charge	15 Aug 1989
Ben Jones Officer-In-Charge	29 Nov 1989
Deborah A. (Malewicz) Welker	2 Jun 1990
Linda W. Hodges Officer-In-Charge	18 Mar 1996
Wilson Reid Officer-In-Charge	31 Mar 1997
Jimmy Horton Officer-In-Charge	4 Jun 1997
Linda W. Hodges	5 Jul 1997
LeRoy K. Guthrie Officer-In-Charge	29 Nov 2000
Billie S. Simkins Officer-In-Charge	12 Jan 2001
John Tom Flynn Officer-In-Charge	16 Oct 2001
John Tom Flynn	17 Nov 2001
Johnny M. Trahan Officer-In-Charge	27 Dec 2002
Johnny M. Trahan	8 Mar 2003



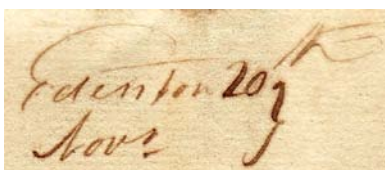
Manuscript  
January 1787

**EDENTON. SEPT, 29**

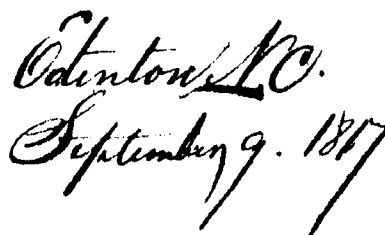
Type 1  
45 x 3 mm Red  
14 Oct 1787  
30 Jun 1788

**FREE PAID**

Note:  
Sometimes there is no period after "EDENTON" and sometimes there is a comma. Length of postmark varies because of date



Manuscript  
20 Feb 1793  
20 Nov 1793

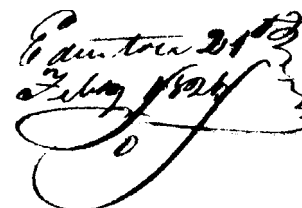


Manuscript  
18 Apr 1812  
16 Dec 1817



Type 2  
30 mm Red  
7 Apr 1818  
16 Dec 1823

**PAID**



Manuscript  
(sometimes in red ink)  
14 Jan 1823  
20 Dec 1825

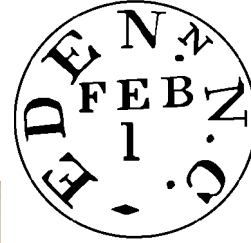
CHOWAN COUNTY

Edenton (Cont.)

(Chowan)

Billie Simkins Officer-In-Charge 14 Sep 2004  
 Delores S. Ferrell Officer-In-Charge 23 Sep 2004  
 Shannon Guirkins Officer-In-Charge 4 Oct 2004  
 Linwood E. Peaden Jr. 5 Feb 2005  
 Cinder R. Isreal 27 Aug 2011  
 Lillian Evans Officer-In-Charge  
 Millard Bond Officer-In-Charge 1 Jun 2012  
 Derek E. Boone 5 Apr 2014

SHIP  
PAID



Type 3  
 32 mm Red  
 11 Apr 1826  
 30 Oct 1826  
 32 mm Black  
 7 Jan 1827  
 10 Nov 1838



PAID  
FREE  
PAID



Type 4  
 30 mm Red  
 12 Jun 1839  
 21 Feb 1850  
 30 mm Blue/Green  
 13 Nov 1840  
 6 Nov 1844



30 mm Black  
 20 Feb 1840  
 30 Nov 1855



Type 1

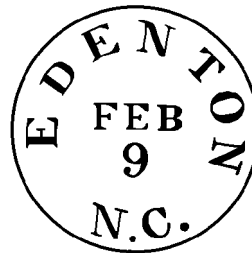
Type 2



Type 3

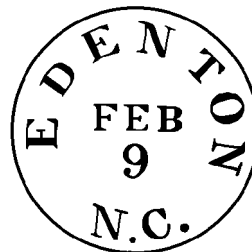


PAID  
SHIP



Type 5  
 33 mm Black  
 4 Jul 1856  
 30 Mar 1860

Confederate



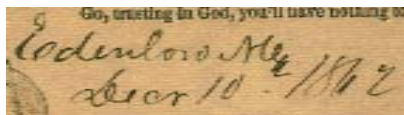
Type 5  
 33 mm Black  
 8 Nov 1861  
 24 Apr 1862

# CHOWAN COUNTY

Edenton (Cont.)

(Chowan)

## Confederate (Cont.)



Manuscript  
10 Dec 1862

## Reconstruction



Type 6  
26 mm Black  
19 Aug 1868  
21 Aug 187x



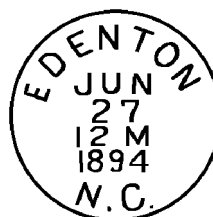
Type 7  
25 mm Black  
15 Nov 1875  
23 Nov 188x  
  
27 mm Blue  
26 Mar 1877  
21 Nov 1877



Type 8  
27 mm Black  
14 Mar 188x  
1 Dec 188x



Type 9  
27 mm Black  
26 May 1884  
10 Aug 1885



Type 10  
28 mm Black  
16 Apr 1890  
27 Jun 1894

CHOWAN COUNTY

Edenton (Cont.)

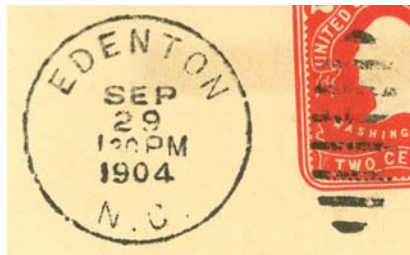
(Chowan)



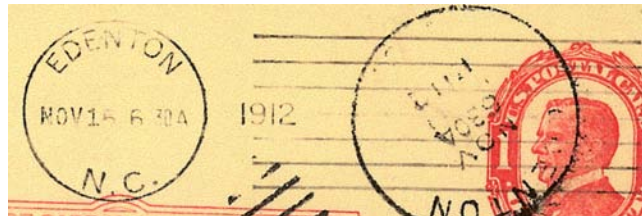
Type 11  
27.5 mm Black  
7 Feb 1895  
11 Nov 1898



Type 12  
28 mm Black  
Metal Duplex Type H2  
(7 bars)  
14 Feb 1900  
6 Oct 1902



Type 13  
30 mm Black  
Metal Duplex Type H2  
(6 bars)  
24 Jan 1904  
5 Nov 1914



Type 14  
24 mm Black  
Cummins Machine  
Type F-131  
13 Jun 1912  
5 Jun 1913



Type 15  
26 mm Black  
Metal Duplex Type E2  
25 Apr 1916  
5 Jan 1943

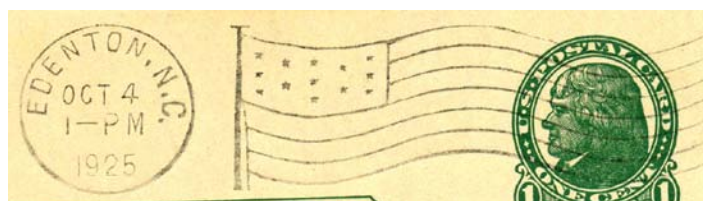
# CHOWAN COUNTY

Edenton (Cont.)

(Chowan)



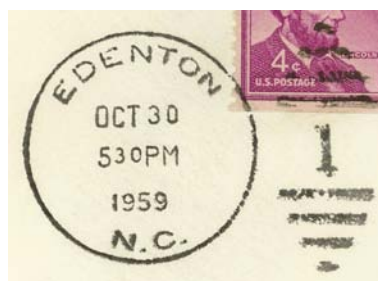
Type 16  
22 mm Black  
American Machine  
Flag Type A14  
20 Mar 1921  
18 Oct 1923



Type 17  
22 mm Black  
American Machine  
Flag Type A14  
(Long field hand cut die)  
11 Sep 1925  
4 Oct 1925



Type 18  
20.5 mm Black  
International Machine  
Type D30  
22 Nov 1927  
3 Jul 1945



Type 19  
31 mm Black  
Metal Duplex Type ?  
30 Oct 1952  
30 Oct 1959



Type 20  
21.5 mm Black  
International Machine  
Type D30  
9 Oct 1950  
25 Jan 1962



Type 21  
29.5 mm Magenta  
8 Dec 1959



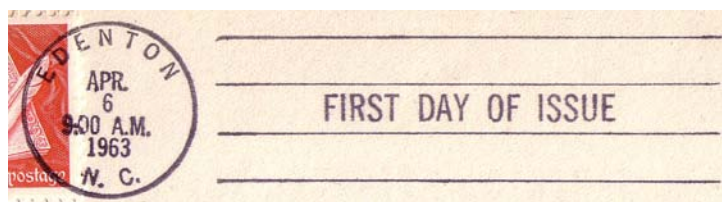
# CHOWAN COUNTY

Edenton (Cont.)

(Chowan)



Type 22  
20 mm Black  
6 Apr 1963



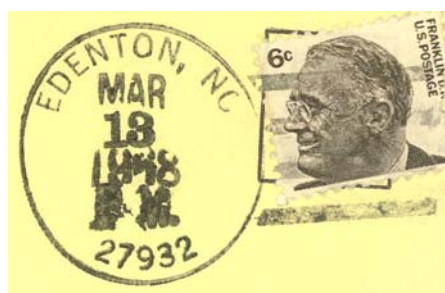
Type 23  
23.5 mm Black  
6 Apr 1963



Type 24  
21 mm Black  
International Machine  
Type J30  
16 Sep 1963  
29 Nov 1965



Type 25  
21 mm Black  
International Machine  
Type Hz30 (27932)  
16 Aug 1966  
17 Dec 1980



Type 26  
33.5 mm Black  
1963 Type F/2 4-Bar (27932)  
13 Mar 1968



Type 27  
33 mm Black  
(27932)  
23 Jan 1976

CHOWAN COUNTY

Edenton (Cont.)

(Chowan)



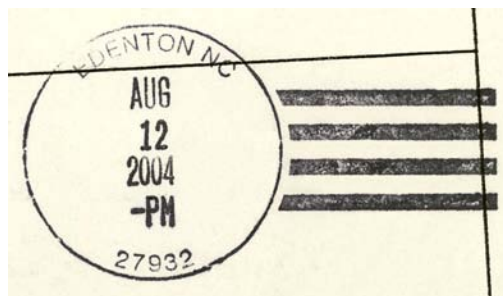
Type 28  
31.5 mm Black  
1963 Type F/2 4-Bar (27932)  
11 Aug 1980



Type 29  
27.5 mm Magenta  
11 Aug 1980  
18 Nov 1985



Type 30  
32.5 mm Black  
1963 Type F/2 4-Bar (27932)  
15 Dec 1991



Type 31  
34 mm Black  
Self-Inking Postmarker (27932)  
12 Aug 2004  
13 Apr 2007

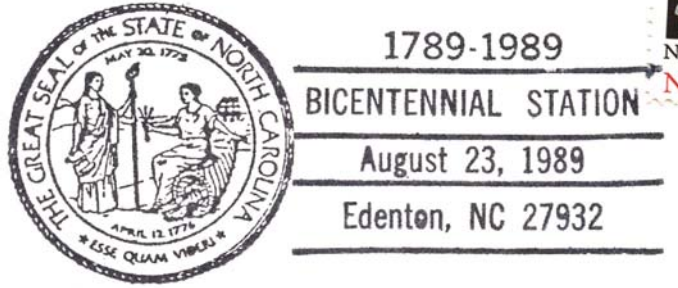
CHOWAN COUNTY

Edenton (Cont.)

(Chowan)

Temporary Station Cancels

Bicentennial Station



Type 1  
 86.5 x 37 mm Black  
 (27932)  
 23 Aug 1989

Receiving datestamp



Type R1  
 27.5 mm Black  
 11 Jun 1888



Type R2  
 27.5 mm Black  
 20 Mar 1897  
 22 Mar 1897



Type R3  
 29.5 mm Black  
 21 Jul 1902



Type R4  
 28.5 mm Black  
 13 Jun 1902  
 1 Oct 1904

CHOWAN COUNTY

Edenton (Cont.)

(Chowan)

Registered



Type 1  
40 x 32 mm Magenta  
23 Aug 1897



Type 2  
38 x 5 mm Magenta  
7 Aug 1900  
24 Sep 1900



Type 3  
29.5 mm Magenta  
13 May 1926

Parcel Post



Type 1  
29.5 mm Black  
12 Jul 194x

Mailing Division



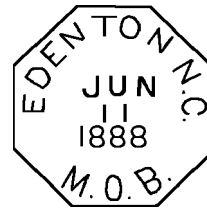
Type 1  
29 mm Magenta  
24 Nov 1944

# CHOWAN COUNTY

## Edenton (Cont.)

(Chowan)

M.O.B.  
(Money Order Business)



Type 1  
26.5 mm Octagon Black  
11 Jun 1898

## Gliden

(Chowan)

Anderson J. Ward	18 Aug 1885
Jessie B. Spivey	27 Sep 1913
Timothy J. Bunch	6 Apr 1916
Anderson D. Ward	10 May 1923
Discontinued	29 Feb 1932
Mail to Hobbsville, Gates County	



Type 1  
28.5 mm Black  
26 Sep 1901  
30 Sep 1904



Type 2  
31 mm Blue  
Doane Type 3-1  
13 May 1910  
17 Aug 1912



Type 3  
32.5 mm Blue  
1925 Type C/1 4-Bar  
29 Feb 1932

## CHOWAN COUNTY

### Holly Wharf

(Chowan)

George W. Womble      25 Feb 1878  
Discontinued          4 Dec 1879

### Jordan

(Chowan)

William E. Jordan      23 Jul 1888  
Discontinued          11 Jun 1890  
No Papers

### Mege, Meege

(Chowan)

Miles S. Elliott        21 May 1902  
Discontinued          30 Nov 1906  
Mail to Tyner  
Re-established as **Meege**  
Miles S. Elliott        10 Aug 1920  
Artenias S. Bush      19 May 1921  
Discontinued          14 Mar 1925  
Mail to Edenton



Type 1  
29 mm Black  
1 Jul 1902

### Myra

(Chowan)

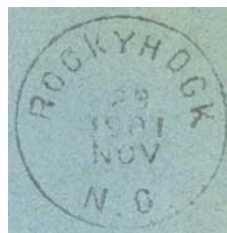
John A. Northcott      1 Dec 1891  
Discontinued          21 Sep 1894  
Mail to Edenton

## CHOWAN COUNTY

### Rockyhock

(Chowan)

William F. Boyce	26 Jun 1884
Henry C. Nixon	2 Sep 1891
Sarah C. Jones	30 Nov 1894
Herbert B. Jones	23 Nov 1899
Lillie M. Jones	5 Oct 1903
Discontinued	30 Apr 1906
Mail to Tyner	

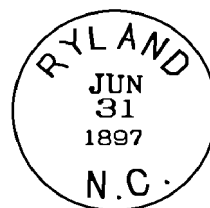


Type 1  
27 mm Black  
24 Nov 189x  
29 Nov 1901

### Ryland

(Chowan)

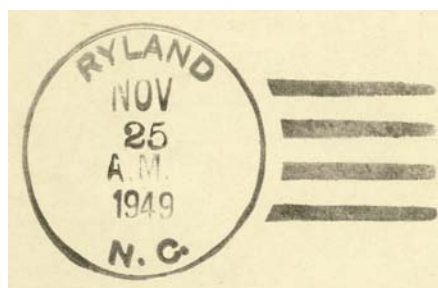
William H. Spivey	14 Jan 1888
Malvern R. Spivey	23 Sep 1918
Orestes E. Spivey	14 Jun 1922
Rella M. Spivey, Acting	31 Mar 1934
Rella M. Spivey	8 Aug 1934
Rella M. Jordan (marriage)	26 Dec 1956
Mrs. Naomi J. Ward Officer-In-Charge	30 Sep 1971
Discontinued	26 Nov 1971
Mail to Tyner	



Type 1  
27 mm Black  
22 Mar 1897  
30 Sep 1904



Type 2  
32 mm Black  
1910 Type B 4-Bar  
18 May 1916



Type 3  
33 mm Black  
1936 Type F/1 4-Bar  
25 Nov 1949  
13 May 1965



Type 4  
32 mm Black  
1963 Type F/2 4-Bar (27971)  
12 Nov 1966

## CHOWAN COUNTY

### Smalls Cross Roads

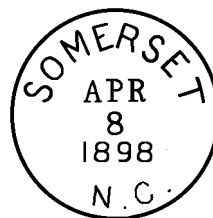
(Chowan)

Richard Elliott	26 Feb 1874
Discontinued	13 May 1880

### Somerset

(Chowan)

John C. Thompson	23 Jul 1888
Ephraim L. McClees	3 Feb 1898
Thomas C. Hedrick	3 Aug 1899
Discontinued	30 Nov 1903
Mail to Edenton	



Type 1  
28 mm Black  
8 Apr 1898

### Tulu

(Chowan)

Warren J. Byrum	24 Nov 1903
Discontinued	15 Dec 1917
Mail to Ryland	

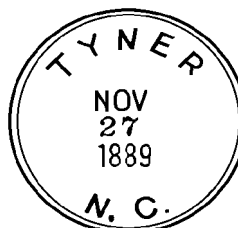


Type 1  
29 mm Black  
15 Mar 1909  
17 May 1910

### Tyner

(Chowan)

Malachi Chappell	1 Mar 1880
Jeremiah Ellis	7 Apr 1882
Discontinued	22 Jan 1883
Mail to Belvidere, Perquimans County	
Malachi B. Chappell	30 Jun 1884
Luther W. Parker	28 Nov 1887
Jesse P. Chappell	10 Aug 1893
Oliver E. Lane	24 Jan 1905
Octavius E. Ward	16 Apr 1914
Titus E. Chappell	1 May 1916
Millicent Chappell, Acting	21 Sep 1922
James L. Baker	20 Nov 1922
Moody L. Chappell, Acting	29 Sep 1925
Sarah M. Lane, Acting	10 Nov 1925



Type 1  
31.5 mm Black  
27 Nov 1889

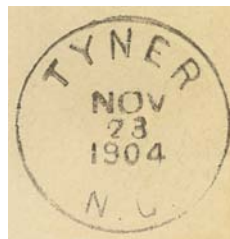


# CHOWAN COUNTY

## Tyner (Cont.)

(Chowan)

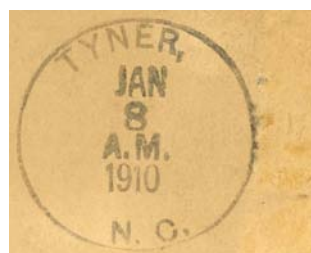
Henry E. Lane	13 Jan 1926
T. O. Asbell	1 Oct 1944
Mrs. Nora Lane Boyce, Acting	1 Aug 1945
Nora Lane Boyce	10 Nov 1945
Nora L. Prinott (marriage)	10 Jun 1967
Janice B. Hobbs, Acting	31 Jan 1968
Janice B. Hobbs	4 Apr 1968
Mrs. Dotmegan L. Rogerson	16 Apr 1983
Lynette L. Hamilton Officer-In-Charge	28 Apr 1992
Carolyn P. Hollowell Officer-In-Charge	8 Sep 1992
Wilson E. Reid Jr.	6 Feb 1993
Lucy G. Beamon Officer-In-Charge	29 Apr 2002
Sandra H. Mitchell Officer-In-Charge	10 May 2002
Millard H. Bond	18 May 2002



Type 2  
28 mm Black  
23 Nov 1904



Type 3  
29.5 mm Black  
Doane Type 2-2  
12 May 1906  
3 Aug 1907



Type 4  
31 mm Black  
1906 Type A/1 4-Bar  
18 Oct 1909  
8 Jan 1910



Type 5  
31.5 mm Black  
1908 Type A/2 4-Bar  
22 Apr 1913



Type 6  
31.5 mm Black  
1910 Type B 4-Bar  
29 Sep 1913

CHOWAN COUNTY

Tyner (Cont.)

(Chowan)



Type 7  
30 mm Black  
Metal Duplex Type H2  
20 Jun 1916  
19 Oct 1921



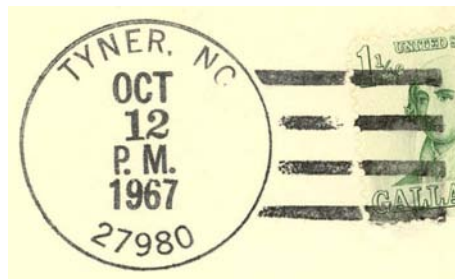
Type 8  
33 mm Black  
1936 Type F/1 4-Bar  
4 Mar 1936  
18 Nov 1943



Type 9  
29.5 mm Magenta  
1 Jul 1949  
21 Nov 1955



Type 10  
30.5 mm Black  
Metal Duplex Type ?  
3 May 1951  
28 Feb 1962



Type 11  
33.5 mm Black  
1963 Type F/2 4-Bar (27980)  
12 Oct 1967  
28 May 1975

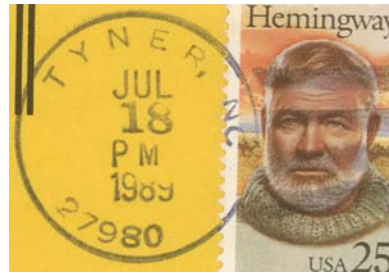
CHOWAN COUNTY

Tyner (Cont.)

(Chowan)



Type 12  
31.5 mm Black  
1963 Type F/2 4-Bar (27980)  
22 May 1978  
20 May 1982



Type 13  
32.5 mm Black  
1963 Type F/2 4-Bar (27980)  
18 Jul 1989



Type 14  
33 mm Black  
1963 Type F/2 4-Bar (27980)  
14 Jan 1994



Type 15  
33 mm Black  
1963 Type F/2 4-Bar (27980)  
4 Sep 1998



Type 16  
28.5 mm Magenta  
29 Nov 2000

## CHOWAN COUNTY

### Tyner (Cont.)

(Chowan)

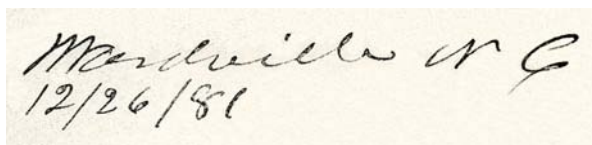


Type 17  
32 mm Black  
Self-Inking Postmarker (27980)  
30 Aug 2007

### Wardville

(Chowan)

Allen C. Ward            20 Jun 1870  
Jeptha A. Ward         5 Jan 1875  
Discontinued            22 Jan 1883  
Mail to Belvidere, Perquimans County



Manuscript  
26 Dec 1881

### Woodley, name changed from Chowan

(Chowan)

George H. Cole         27 Nov 1888  
Edward S. Holleman    1 Aug 1890  
James T. Hearn         16 Jan 1892  
William J. Richards    31 Oct 1892  
Discontinued            21 Apr 1898  
Mail to Amboy