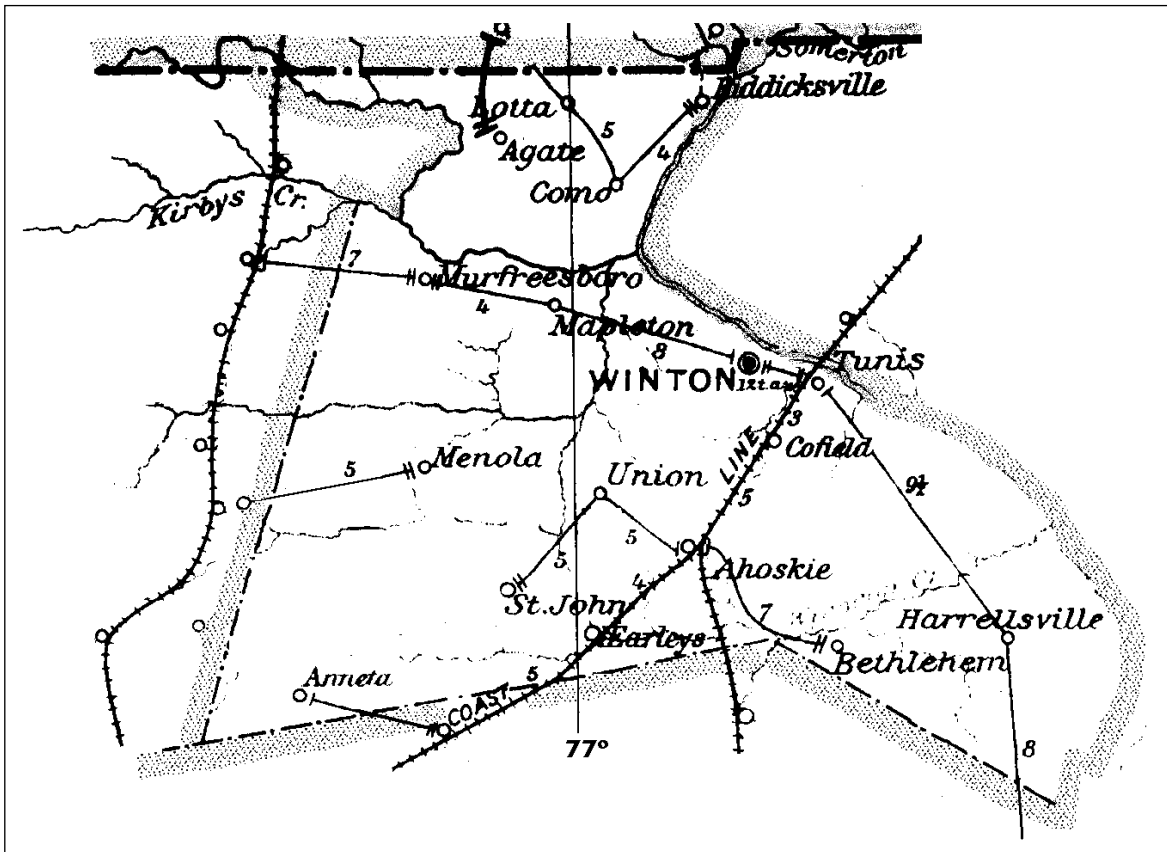


HERTFORD COUNTY

Formed in 1759 from Bertie, Chowan, and Northampton Counties

Number of Post Offices - 28
Number with postmarks known - 18



HERTFORD COUNTY

Agate

(Hertford)

Horace A. Moore 28 Sep 1892
 Discontinued 30 Jun 1906
 Mail to Boykins

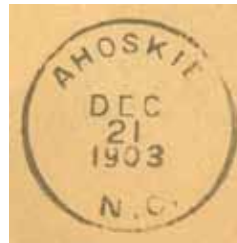
Ahoskie

(Hertford)

James A. Copeland	18 Sep 1889
Jesse H. Mitchell	28 Feb 1895
James A. Copeland	11 Dec 1896
Arnold G. Bozmore	4 Jun 1897
Isaac F. Snipes	27 Jun 1910
L. T. Sumner	25 Jul 1913
Arthur T. Willoughby, Acting	26 Jan 1921
Arthur T. Willoughby	18 Mar 1922
James O. Carter	3 Jul 1926
Isaac F. Snipes, Acting	30 Jun 1930
Isaac F. Snipes	14 Feb 1931
Roberts H. Jernigan, Acting	21 Sep 1933
Roberts H. Jernigan	10 Apr 1934
Alvah Early, Acting	1 Oct 1943
Alvah Early	25 May 1944
Allen T. Powell, Jr., Acting	30 Jun 1965
Allen T. Powell, Jr.	16 May 1966
Donald G. Blowe Officer-In-Charge	30 Mar 1974
Henry G. Spruill Officer-In-Charge	19 Apr 1974
Howard W. Haskell	17 Aug 1974
James L. Tugwell Officer-In-Charge	21 Nov 1975
William C. Futrell Officer-In-Charge	8 Mar 1976
Jack C. Baker	11 Sep 1976
Eddie T. Chavis Jr. Officer-In-Charge	3 Dec 1981
Bobby J. Parker	17 Apr 1982
Linda Craig Officer-In-Charge	26 Jun 1989
Joseph Milton Haslip	24 Mar 1990
Malcolm D. Cooke Officer-In-Charge	24 Sep 1992
Jim L. Carter Officer-In-Charge	30 Nov 1992
Malcolm D. Cooke Officer-In-Charge	8 Dec 1992
James A. Mallard	6 Feb 1993
Michael O. Keen Officer-In-Charge	11 Jul 1995
Bobbi Sue Fretwell	2 Mar 1996
Billie S. Simkins Officer-In-Charge	14 Jul 1998
Randall K. Vester Officer-In-Charge	21 Aug 1998
Lionel V. Houk Jr.	5 Dec 1998
Dianese D. Riddick Officer-In-Charge	15 May 2001
RobertStephenBennett Officer-In-Charge	11 Aug 2001
Bernard Jackson Officer-In-Charge	10 Jan 2002
George Humphreys Officer-In-Charge	19 Apr 2002
Ken Collins Officer-In-Charge	16 May 2002



Type 1
 27 mm Black
 28 Nov 1892



Type 2
 28.5 mm Black
 27 Jul 1897
 21 Dec 1903



Type 3
 30.5 mm Black
 7 Oct 1905



Type 4
 29.5 mm Black
 Metal Duplex Type H2
 3 Feb 1908
 29 Aug 1917

HERTFORD COUNTY

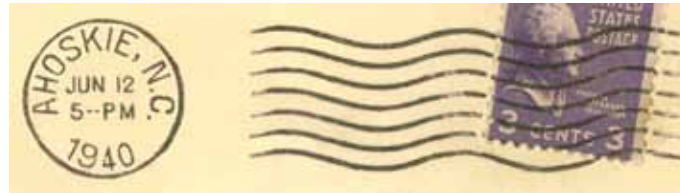
Ahoskie (Cont.)

(Hertford)

Beverly A. Torain	13 Jul 2002
Eileen R. Liverman Officer-In-Charge	19 Nov 2004
Martha Elaine Burnette Officer-In-Charge	2 Jun 2005
Constance N. Walsh Officer-In-Charge	28 Jul 2005
Constance N. Walsh	4 Feb 2006
Ann Harris Officer-In-Charge	8 Sep 2006
Rosa Whitehead Officer-In-Charge	23 Mar 2007
Dennis L. Spangler	7 Jul 2007
Cinder R. Isreal	30 Nov 2013



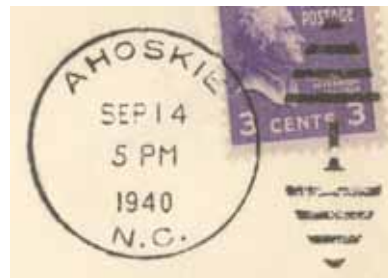
Type 5
29.5 mm Black
Metal Duplex Type H2
6 May 1921
7 Oct 1922



Type 6
21 mm Black
International Machine
Type D30
3 Feb 1931
17 Nov 1959



Type 7
30.5 mm Black
Metal Duplex Type E2
22 Apr 1937



Type 8
30.5 mm Black
Metal Duplex Type ?
14 Sep 1940
18 Oct 1956



Type 9
30 mm Magenta
15 Jun 1954

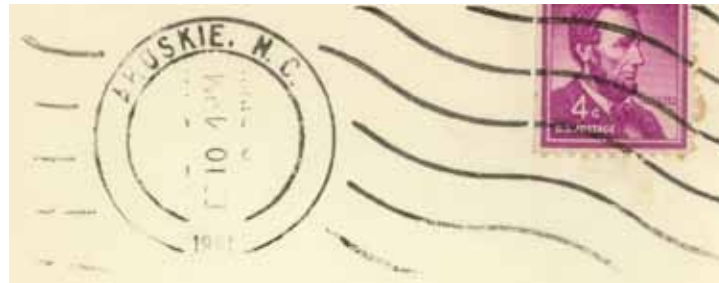
HERTFORD COUNTY

Ahoskie (Cont.)

(Hertford)



Type 10
36 mm Black
2 Mar 1959



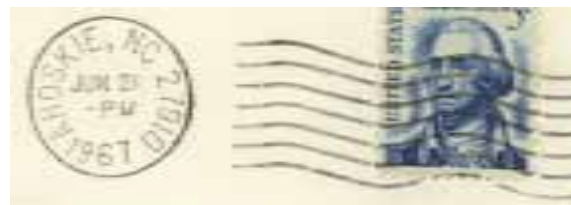
Type 11
31.5 mm Black
Hanley hand-held roller
10 Feb 1961



Type 12
21.5 mm Black
International Machine
Type D30
23 Oct 1961
11 Jan 1965



Type 13
28.5 mm Red
20 Nov 1963

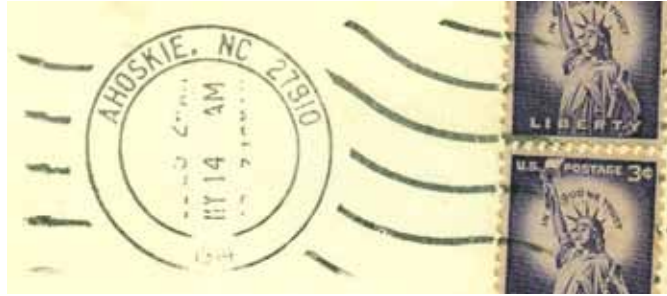


Type 14
21.5 mm Black
International Machine
Type Nz30 (27910)
26 Sep 1965
11 Feb 1985

HERTFORD COUNTY

Ahoskie (Cont.)

(Hertford)



Type 15
32.5 mm Black
Hanley hand-held roller (27910)
16 Jan 1970
14 May 1974



Type 16
27.5 mm Magenta
18 Jan 1979
21 Apr 1981



Type 17
27.5 mm Red
Self-Inking Postmarker (27910)
14 Sep 1991



Type 18
30 mm Red
Self-Inking Postmarker (27910)
21 Aug 2006

Rural Station Cancels

Union Rural Station
16 Nov 1966
By 1987

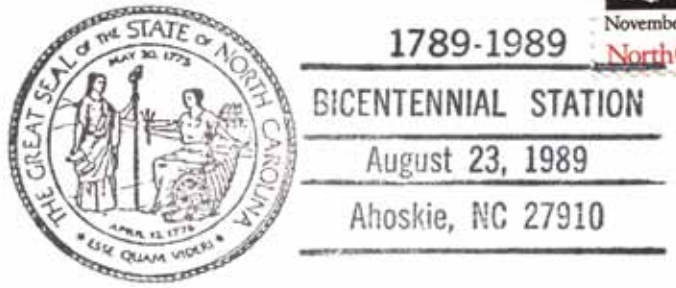
HERTFORD COUNTY

Ahoskie (Cont.)

(Hertford)

Temporary Station Cancels

Bicentennial Station



Type 1
87 x 36.5 mm Black
(27910)
23 Aug 1989

Receiving datestamp



Type R1
29 mm Black
7 Sep 1906
5 Oct 1906

Registered



Type 1
29.5 mm Blue
6 Nov 1946

M.O.B.
(Money Order Business)



Type 1
30 mm Magenta
2 Jul 1911

HERTFORD COUNTY

Ahoskie (Cont.)

(Hertford)

Third Class Cancelers



Type 12 var.
21.5 mm Black
International Machine
Type D30 (no date)
1962

Ahoskie Ridge

(Hertford)

John Parker	8 Mar 1828
Samuel Eure	3 Jun 1830
Oliver H. Seabury	2 Mar 1831
John Parker	18 May 1832
John Harrel	10 Jan 1833
Elisha E. Horton	10 Apr 1833
Name changed to Mulberry Grove	29 Mar 1839
Name changed to Ahosky Ridge	
John Harrell	21 Aug 1840
Giles W. Joiner	24 Oct 1840
Name changed to Saint John	15 Feb 1841

Ahosky Ridge Me
August 18th /

Manuscript
18 Aug 183x

Anneta

(Hertford)

Annie T. Moore	26 Nov 1886
E. H. Joyner	9 Dec 1886
Annie T. Moore	17 Dec 1886
Charles T. Deanes	19 Feb 1892
Martha S. Benthall	10 Sep 1897
Josephine E. Outland	8 Mar 1901
Charles C. Tyler	11 Feb 1904
David L. Minton	25 Oct 1906
Discontinued	15 Jul 1912
Mail to Rich Square	

Bartonsville

(Hertford)

Lewis W. Spaulding	26 Feb 1856
L. Barton, Jr.	10 Apr 1857
Bernard B. Vassall	14 May 1857
Stephen Barton	15 Jun 1858
Stephen Barton, CSA	6 Jul 1861
CSA office closed on or before	30 Apr 1865
Sallie Ann Beal	16 Dec 1865
Name changed to Riddicksville	23 Feb 1866

Bartonsville N.C.
August 21 - 1858

Manuscript
21 Aug 1856
21 Apr 1857

HERTFORD COUNTY

Bartonsville (Cont.)

(Hertford)

FREE



Type 1
37 mm Black
1 Jun 1857
31 Jan 1860

B.B. Vassall P.M.

Postmaster frank
28 May 1857
20 Oct 1857

B.B. VASSALL

Postmaster frank
36 x 6 mm Black
10 Oct 1857

J. Barton P.M.

Postmaster frank
18 May 1859
4 Jul 1859

Bethel

(Hertford)

John G. Wilson 9 Apr 1827
Abner Harrell 10 Jan 1833
Name changed to **Harrellsville** 8 Dec 1847

*Bethel N.C.
Aug 11th
P*

Manuscript
11 Aug 1847

Bethlehem, name changed from Pitch Landing

(Hertford)

William B. Alexander 9 Mar 1881
Martha J. Adkins 15 Dec 1884
Albert B. Adkins 25 Jul 1901
Discontinued 30 Jun 1905
Mail to Cofield

HERTFORD COUNTY

Boyetteville

(Hertford)

W. J. Boyett 26 Jan 1882
 Discontinued 31 Jul 1882

Cofield

(Hertford)

Barnes G. Williams 17 May 1898
 Samuel E. Harrell 29 Sep 1909
 Nannie J. Britton 9 Feb 1917
 William J. Perry 26 Feb 1918
 Thelma E. Perry, Acting 30 Nov 1952
 Thelma E. Perry 25 May 1953
 Mrs. Tamar H. Godwin, Acting 30 Nov 1967
 Resigned 31 Jan 1969
 William E. Bazemore 17 Jan 1969
 Gladys M. Etters Officer-In-Charge 25 Jul 1991
 Colleen J. Burnham 19 Oct 1991
 Donna McCuiston Officer-In-Charge 8 Jan 1992
 Eileen R. Liverman 11 Jul 1992
 Irene J. Bedgood Officer-In-Charge 23 Feb 1993
 Irene J. Bedgood 11 Dec 1993
 Thurston A. Liles Officer-In-Charge 25 Jul 2006
 Diane Y. Cooke Officer-In-Charge 29 Sep 2006
 Reginald P. Clack 9 Dec 2006
 Converted to Remotely Managed Post
 Office of Winton 26 Jan 2013



Type 1
 28 mm Black
 15 Sep 1907
 3 Aug 1909



Type 2
 32 mm Black
 1908 Type A/2 4-Bar
 10 Mar 1910
 5 Sep 1917



Type 3
 33 mm Black
 1910 Type B 4-Bar
 11 Jan 1921



Type 4
 30 mm Black
 Metal Duplex Type H2
 (8 bars)
 20 Apr 1949

HERTFORD COUNTY

Cofield (Cont.)

(Hertford)



Type 5
30 mm Black
Metal Duplex Type H2
(7 bars)
28 Apr 1953
15 May 1965



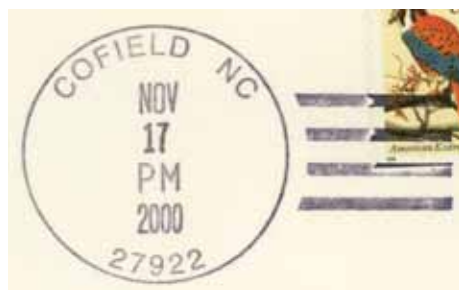
Type 6
31.5 mm Black
1963 Type F/2 4-Bar (27922)
1 Jul 1970
22 Jan 1972



Type 7
33 mm Black
1963 Type F/2 4-Bar (27922)
26 Jan 1975
5 Nov 1980



Type 8
33.5 mm Black
1963 Type F/2 4-Bar (27922)
4 Aug 1983
26 Mar 1993



Type 9
34.5 mm Black
Self-Inking Postmarker
Type 3A
17 Nov 2000

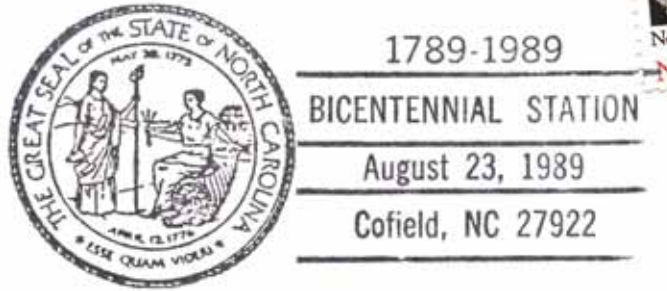
HERTFORD COUNTY

Cofield (Cont.)

(Hertford)

Temporary Station Cancels

Bicentennial Station



Type 1
86.5 x 37.5 mm Black
(27922)
23 Aug 1989

Como

(Hertford)

Tyrone Spiers	2 Jan 1883
Hugh McDonald Spiers	14 Jan 1889
Guy C. Picot	2 Dec 1889
Edgar G. Sears	8 Mar 1907
Discontinued	17 Jul 1907
Mail to Winton	
Order rescinded	15 Aug 1907
Edgar G. Sears continued	15 Aug 1907
John C. Taylor	6 Nov 1912
Mary E. Taylor	14 Nov 1921
John C. Taylor, Acting	8 Aug 1924
John C. Taylor	19 Mar 1925
William J. Hill, Acting	12 Jan 1927
William J. Hill	22 Oct 1927
Mary B. Railey, Acting	1 Feb 1948
Mary B. Railey	9 Sep 1948
W. Marvin Worrell, Jr., Acting	30 Dec 1964
W. Marvin Worrell	22 Jun 1966
Jean C. Matthews Officer-In-Charge	3 Apr 1998
Ann A. Bennett	29 Aug 1998
Dianne Futrell Officer-In-Charge	14 Mar 2001
Stephen W. Edwards	19 May 2001
Dawn Pomeroy Officer-In-Charge	27 Jul 2012
Converted to Remotely Managed Post Office of Murfreesboro	26 Jan 2013



Type 1
28 mm Black
2 Dec 1904
13 Nov 1907



Type 2
32.5 mm Black
1908 Type A/2 4-Bar
31 Mar 1909
16 May 1910



Type 3
32.5 mm Black
1910 Type B 4-Bar
10 Apr 1914

HERTFORD COUNTY

Como (Cont.)

(Hertford)



Type 4
33 mm Black
1936 Type F/1 4-Bar
28 Dec 1944
18 Nov 1949



Type 5
34 mm Black
1936 Type F/1 4-Bar
7 Sep 1951



Type 6
32 mm Black
1936 Type F/1 4-Bar
22 May 1961



Type 7
33.5 mm Black
1936 Type F/1 4-Bar
10 Dec 1962



Type 8
33 mm Black
1963 Type F/2 4-Bar (27818)
31 Mar 1967

HERTFORD COUNTY

Como (Cont.)

(Hertford)



Type 9
32.5 mm Black
1963 Type F/2 4-Bar (27818)
8 Feb 1971
10 Jan 1972



Type 10
33.5 mm Black
1963 Type F/2 4-Bar (27818)
23 Aug 1973
15 Sep 1975



Type 11
34 mm Black
1963 Type F/2 4-Bar (27818)
16 Feb 1983
16 May 1983



Type 12
31 mm Black
Self-Inking Postmarker
Type 1B (27818)
13 Nov 1991
11 Mar 1992



Type 13
30.5 mm Black
Self-Inking Postmarker (27818)
23 Oct 2006

HERTFORD COUNTY

Earleys

(Hertford)

John T. Early	27 Oct 1890
James D. Early	29 Apr 1897
William C. Powell	8 Dec 1897
Order rescinded	6 Sep 1899
James D. Early continued	6 Sep 1899
Discontinued	15 Sep 1925
Mail to Ahoskie	



Type 1
28 mm Black
4 Aug 1900



Type 2
32.5 mm Black
1910 Type B 4-Bar
11 Feb 1916
27 May 1916

Gipsy

(Hertford)

W. J. Boyett	23 Nov 1881
Discontinued	26 Jan 1882

Harrellsville, name changed from Bethel

(Hertford)

Abner Harrell	8 Dec 1847
Thomas Matthews	25 Apr 1861
A. Harrell, CSA	1 Jun 1861
Thomas Matthews, CSA	6 Jul 1861
Horatio Hays, CSA	Bibliog. #19
Joseph J. Scull, CSA	Bibliog. #19
CSA office closed on or before	30 Apr 1865
John H. Jernigan	16 Dec 1865
Norman L. Shaw	10 Feb 1866
Parker D. Robbins	22 Sep 1875
John T. Williams	8 Oct 1877
Henry C. Sharp	23 May 1881
Charles L. Sharp	20 Nov 1882
John O. Askew	9 Dec 1885
Albert C. Booth	18 May 1891
Isaiah Boon	6 Oct 1892
Charles H. Smith	20 Apr 1893
Albert C. Booth	15 Nov 1897
Joseph H. Evans	26 Sep 1900

Harrellsville *sh*

Manuscript
13 Sep 1848
31 Oct 1955



Type 1
31 mm Red
1 Feb 185x

HERTFORD COUNTY

Harrellsville (Cont.)

(Hertford)

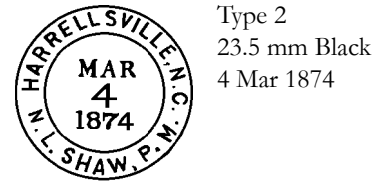
Hunter H. Taylor	3 Jun 1902
Mervin B. Taylor	8 Apr 1914
Joel A. Britt, Acting	16 Apr 1938
Joel A. Britt	2 Aug 1938
Thomas W. Britt, Acting	8 Oct 1965
Thomas W. Britt	21 Jul 1967
Dorothy B. Holloman Officer-In-Charge	16 Jun 1982
Dorothy B. Holloman	7 Aug 1982
R. S. Taylor Officer-In-Charge	3 Jan 1986
Kathy C. Spivey Officer-In-Charge	24 Feb 1986
Billie J. Burgess (Ms)	30 Aug 1986
Ed Cullipher Officer-In-Charge	7 Aug 1989
Robert Steve Taylor	24 Feb 1990
Converted to Remotely Managed Post Office of Ahoskie	4 Oct 2014

Confederate



Manuscript
17 Jan 186x
27 Dec 186x

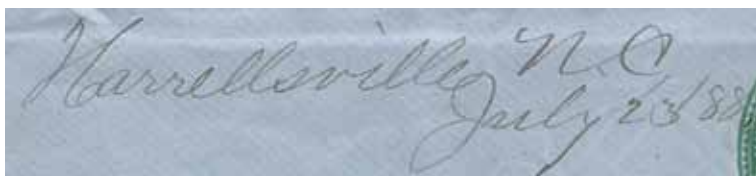
Reconstruction



Type 2
23.5 mm Black
4 Mar 1874



Type 3
27 mm Black
23 Apr 188x



Manuscript
23 Jul 1888

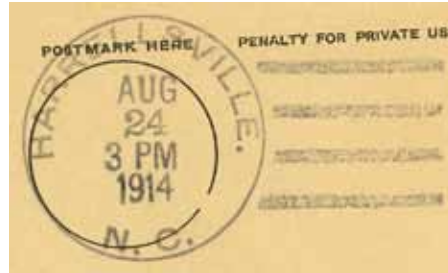
HERTFORD COUNTY

Harrellsville (Cont.)

(Hertford)



Type 4
27.5 mm Black
1 Dec 1891
17 Apr 1895



Type 5
32 mm Black
1910 Type B 4-Bar
24 Aug 1914



Type 6
29.5 mm Black
17 Jan 1921



Type 7
34.5 mm Black
1936 Type F/1 4-Bar
12 May 1937

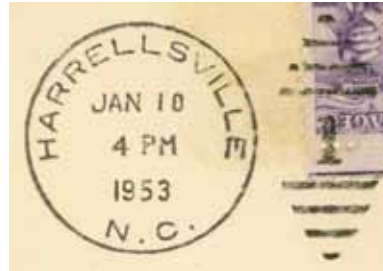


Type 8
34 mm Black
1936 Type F/1 4-Bar
31 Oct 1946

HERTFORD COUNTY

Harrellsville (Cont.)

(Hertford)



Type 9
30.5 mm Black
Metal Duplex Type ?
6 Oct 1950
25 Oct 1954



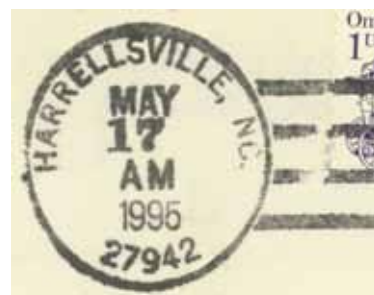
Type 10
34 mm Black
1963 Type F/2 4-Bar (27942)
13 Jan 1966



Type 11
33.5 mm Black
1963 Type F/2 4-Bar (27942)
9 Sep 1974
13 Sep 1979



Type 12
35 mm Black
1963 Type F/2 4-Bar (27942)
31 Jul 1984
6 Sep 1985



Type 13
34 mm Black
1963 Type F/2 4-Bar (27942)
17 May 1995

HERTFORD COUNTY

Harrellsville (Cont.)

(Hertford)



Type 14
32.5 mm Magenta
17 May 1995

32.5 mm Red
24 Jan 1997



Type 15
29.5 mm Red
Self-Inking Postmarker (27942)
1 Dec 2006

Lakehart

(Hertford)

C. E. Liverman 21 Oct 1889
Discontinued 1 Jun 1895
No papers

Lelia

(Hertford)

Charles E. Liverman 4 Jun 1892
Discontinued 19 Jun 1893
Mail to Murfreesboro

HERTFORD COUNTY

Lotta

(Hertford)

Stephen D. Midyett 6 Aug 1887
 Walter B. Myrick 10 Dec 1889
 Emily L. Midyett 11 May 1893
 Discontinued 30 Sep 1909
 Mail to Como



Type 1
 27 mm Black
 2 Mar 189x

Mapleton

(Hertford)

David A. Griffith 4 Dec 1882
 Eley T. Boyette 9 Apr 1884
 Elzor F. Parker 9 Aug 1893
 Jesse H. Parker 10 Jun 1896
 George E. Carman 31 Mar 1905
 Henry Parker 12 Feb 1909
 Discontinued 30 Jun 1909
 Mail to Winton



Type 1
 27.5 mm Black
 13 Jul 1898
 29 Oct 1900

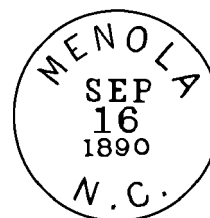


Type 2
 28.5 mm Black
 Doane Type 2-?
 18 Oct 1904

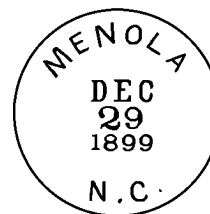
Menola

(Hertford)

Charles W. Parker 16 Nov 1886
 Charles M. Parker 10 May 1897
 Joseph J. Brown 5 Sep 1899
 Discontinued 15 Jul 1907
 Mail to Woodland, Northampton County



Type 1
 27.5 mm Black
 16 Sep 1890



Type 2
 27.5 mm Black
 22 Jun 1898
 29 Dec 1899

HERTFORD COUNTY

Menola (Cont.)

(Hertford)



Type 3
28 mm Black
Doane Type 2-3
6 Apr 1906
31 Jan 1907

Mulberry Grove, name changed from Ahosky Ridge

(Hertford)

James L. Grimes	29 Mar 1839
Jordan J. Horton	27 Jan 1840

Murfreesboro', Murfreesborough, Murfreesboro

(Hertford)

Murfree Knight	14 Oct 1794
Hardy Murfree	7 May 1796
Edward Lisle	1 Apr 1803
William P. Morgan	3 Jan 1806
Ephraim Wheeler	26 Mar 1818
John Wheeler	15 Nov 1824
Roscius C. Borland	25 Aug 1832
Samuel J. Wheeler	31 Aug 1835
Robert J. Parker	9 Apr 1849
William P. Beaman	26 Nov 1850
Antonio P. Yancy	10 Jul 1851
Samuel J. Wheeler	2 Oct 1854
Spelled Murfreesborough	1858 Ledger
S. J. Wheeler, CSA	3 Mar 1862
James M. Trader, CSA	Bibliog. #19
CSA office closed on or before	30 Apr 1865
Mary Eliza Trader	21 Sep 1865
James M. Trader	18 Apr 1870
Edward A. Buell	4 Sep 1882
Name changed to Murfreesboro	27 Dec 1887
William B. Spencer	27 Dec 1887
George W. Reynolds	31 Oct 1889
Elisha T. Snipes	13 Apr 1892
William B. Spencer	16 Jul 1894
Rabon C. Benthall	25 Apr 1897
George W. Grimes	2 Oct 1902
John Hare	27 Nov 1906
James D. Babb	7 May 1914

MURFREESBORO, Type 1
59 x 16 mm Black
JANUARY * 3. 1808 3 Jan 1808
15 Sep 1814

Murfreesboro' w.c. Manuscript
May 14th 22 Jan 1806
31 Oct 1822

Geo E. Wheeler Postmaster frank
P. J. M. 14 May 1815

Murfreesboro N.C. Manuscript
August 15 20 Aug 1826
26 Dec 1830

HERTFORD COUNTY

Murfreesboro', Murfreesborough, Murfreesboro (Cont.)

(Hertford)

Clifton H. Chamberlain, Acting	2 Apr 1923
Clifton H. Chamberlain	19 Dec 1923
James J. Parker, Acting	5 Dec 1924
Cephus Futrell, Acting	16 Feb 1925
Cephus Futrell	23 Feb 1925
James J. Parker, Acting	20 Jun 1933
James J. Parker	22 May 1934
William L. Whitley, Acting	4 May 1948
William L. Whitley	18 Oct 1949
William C. Futrell Officer-In-Charge	22 Jun 1973
William C. Futrell	15 Sep 1973
Billie B. Stewart Officer-In-Charge	31 Aug 1990
Mildred W. Vaughan	9 Feb 1991
Malcolm D. Cooke Officer-In-Charge	27 Jan 1992
Gwendolyn Bryant Officer-In-Charge	4 Feb 1992
Wayne Long Officer-In-Charge	29 Jun 1992
Malcolm D. Cooke	6 Feb 1993
Eileen Liverman Officer-In-Charge	18 Aug 1993
Michael O. Keen	16 Apr 1994
William P. Spivey Officer-In-Charge	29 Jan 1997
Eileen R. Liverman Officer-In-Charge	18 Jun 1997
Bernard E. Jackson	16 Aug 1997
Ann Bennett Officer-In-Charge	11 Feb 2000
William A. Cutrell	25 Mar 2000
Tammy Jenkins Officer-In-Charge	20 Oct 2004
Angela L. Gaines Officer-In-Charge	16 Feb 2005
Angela L. Gaines	18 Feb 2006

PAID
Type 1

FREE
Type 1



Type 2
31 mm Black
(sometimes with manuscript
day or month and day)
5 Jul 1831
11 May 1849



Type 1

Type 1

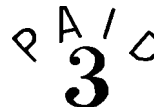
31 mm Red
28 Jul 1831
31 Oct 1851



Type 2

Type 2

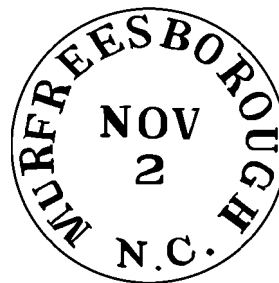
31 mm Blue
7 Nov 1855
6 Dec 1855



*Murfreesboro
Oct 9th*

Manuscript
33 Jun 1846
16 Feb 1847

FREE
Type 2



Type 3
37 mm Black
17 Dec 1857
15 Mar 1859

HERTFORD COUNTY

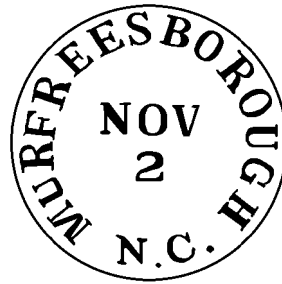
Murfreesboro', Murfreesborough, Murfreesboro (Cont.)

(Hertford)

Confederate

PAID
Type 2

5 10
Type 3 Type 3

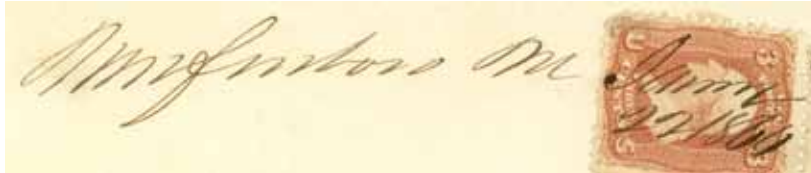


Type 3
37 mm Black
23 Jun 1861
11 Jun 1862



Type 2
31 mm Black
22 Aug 186x
27 Sep 1862

Reconstruction



Manuscript
22 Jan 1866
10 Jun 1869

Manuscript Purple
27 Sep 1871



Type 4
27.5 mm Black
18 Mar 1880
21 Mar 1882



Type 5
28 mm Black
7 May 1883

HERTFORD COUNTY

Murfreesboro', Murfreesborough, Murfreesboro (Cont.)

(Hertford)



Type 6
27.5 mm Black
16 May 1884
5 Sep 1891



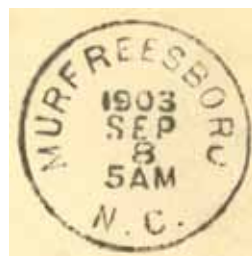
Type 7
27.5 mm Black
16 May 1888
14 Sep 1891



Type 8
28.5 mm Black
20 Sep 1893
13 Nov 189x



Type 9
29 mm Black
21 May 1900
26 Oct 1903



Type 10
30.5 mm Black
8 Sep 1903

HERTFORD COUNTY

Murfreesboro', Murfreesborough, Murfreesboro (Cont.)

(Hertford)



Type 11
28 mm Black
Doane Type 2-6
6 Oct 1904
9 Jul 1907



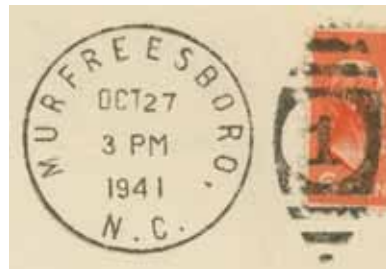
Type 12
31.5 mm Black
Doane Type 3-6
16 Nov 1907
24 Apr 1908



Type 13
32.5 mm Black
1908 Type A/2 4-Bar
16 Jan 1912



Type 14
30.5 mm Black
Metal Duplex Type H2
7 Mar 1917
28 Mar 1929

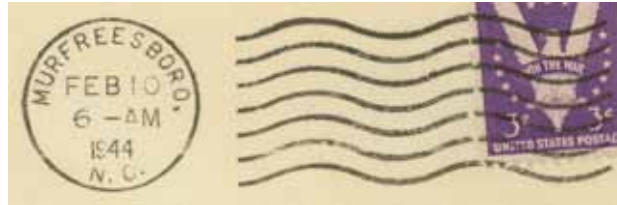


Type 15
30 mm Black
Metal Duplex Type E2
27 Oct 1941
4 Mar 1953

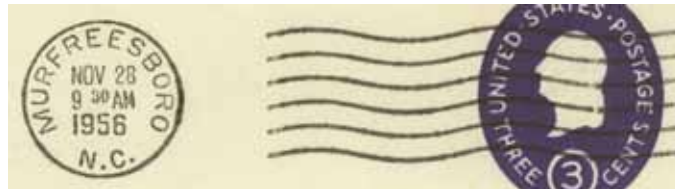
HERTFORD COUNTY

Murfreesboro', Murfreesborough, Murfreesboro (Cont.)

(Hertford)



Type 16
23 mm Black
International Machine
Type AT/S 2721
10 Feb 1944
28 Dec 1948



Type 17
21 mm Black
Universal Machine
Type DT 300
15 Dec 1951
21 May 1959



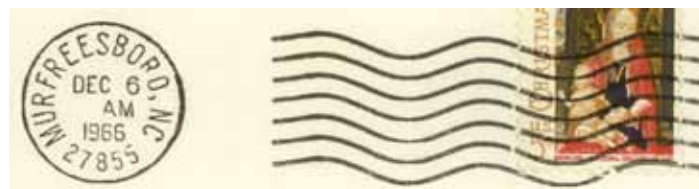
Type 18
35.5 mm Black
22 Oct 1960



Type 19
31 mm Magenta
17 Nov 1960



Type 20
21.5 mm Black
International Machine
Type J30
12 Jan 1963
18 Nov 1964

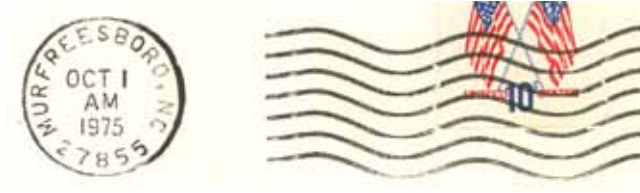


Type 21
21.5 mm Black
International Machine
Type Hz30 (27855)
22 Nov 1966
6 Dec 1966

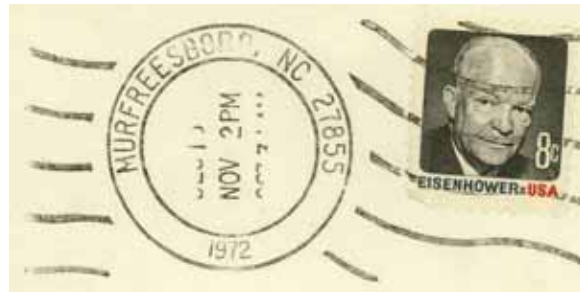
HERTFORD COUNTY

Murfreesboro', Murfreesborough, Murfreesboro (Cont.)

(Hertford)



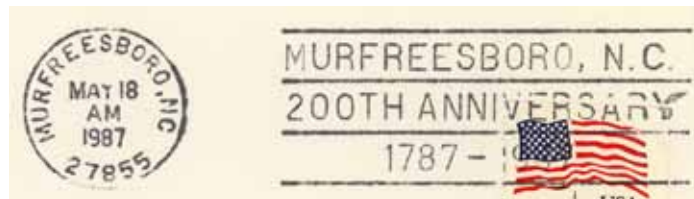
Type 22
21.5 mm Black
International Machine
Type Hz30 (27855)
7 Oct 1971
11 Sep 1979



Type 23
32.5 mm Black
Hanley hand-held roller (27855)
2 Feb 1971
2 Nov 1972



Type 24
29.5 mm Magenta
4 Jan 1972



Type 25
21.5 mm Black
International Machine
Type Hz26 (27855)
(Murfreesboro, N.C./200th
Anniversary/1787-1987)
1 Jan 1987
12 Jun 1987



Type 26
27.5 mm Red
Self-Inking Postmarker (27855)
12 Aug 1997

HERTFORD COUNTY

Murfreesboro', Murfreesborough, Murfreesboro (Cont.)

(Hertford)



Type 27
30 mm Red
Self-Inking Postmarker (27855)
8 Jan 2007

Receiving datestamp



Type R1
28.5 mm Black
11 Mar 1905

Registered



Type 1
29 mm Magenta
4 Mar 1947

Petty's Shore, Petty Shore

(Hertford)

Leonidas R. Harrell	30 Jan 1873
Discontinued	23 Oct 1874
Re-established as Petty Shore	
William J. Harrell	28 Jan 1879
Discontinued	23 Dec 1880
James Colton	17 Mar 1881
Discontinued	31 May 1881

HERTFORD COUNTY

Pitch Landing

(Hertford)

John Cooper	26 Aug 1801
Starkey S. Harrell	1 Jul 1812
Daniel VanPelt	9 Jun 1813
George B. Outlaw	12 Apr 1816
Watson Lewis	11 Jun 1817
Samuel W. Harrell	21 Jun 1841
George W. Moore	23 Oct 1841
Joseph J. Scull	14 Feb 1842
Watson Lewis, Jr.	14 Sep 1847
John O. Askew	19 Feb 1851
John O. Askew, CSA	27 Aug 1861
CSA office closed on or before	30 Apr 1865
Federal office discontinued	11 Dec 1866
James O. Askew, Jr.	5 Sep 1870
W. B. Alexander	11 Feb 1881
Name changed to Bethlehem	9 Mar 1881

*Pitch Landing
Dec. 14th*

Manuscript
14 Dec 1809
23 Aug 1810

*Pitch Landing NC
July 16th*

Manuscript
16 Feb 1841
1 Feb 1845

*free
P. O. Scull
PM*

Postmaster frank
1 Feb 1845

Pitch Landing N.C.

Manuscript
30 May 185x
25 Mar 186x

Confederate

*Pitch Landing NC
July 1*

Manuscript
1 Jul 186x
28 Jul 186x



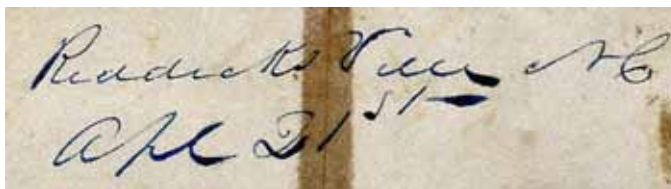
Type 1
25 mm Blue
20 Dec 188x

HERTFORD COUNTY

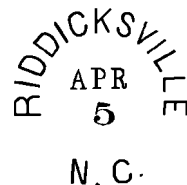
Riddicksville

(Hertford)

Richard F. Dillard	17 Feb 1848
Isaac Pipkin	1 Apr 1851
Discontinued	27 Apr 1852
Re-established, name changed from Bartonsville	
Sallie A. Beal	23 Feb 1866
James D. Riddick	29 Jan 1869
Alison E. Johnson	21 Apr 1891
James D. Riddick	15 Aug 1895
Discontinued	30 Sep 1909
Mail to Como	



Manuscript
21 Apr 848



Type 1
23 mm Blue
5 Apr 187x



Type 2
27 mm Black
8 Dec 187x

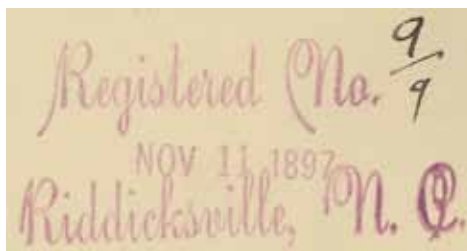


Type 3
25.5 mm Purple
5 Apr 1886



Type 4
28 mm Black
18 Apr 1901
27 Jan 1906

Registered



Type 1
59 x 26.5 mm Magenta
11 Nov 1897

HERTFORD COUNTY

Rosako

(Hertford)

Jordan J. Horton	15 Nov 1880
Charles W. Parker	12 Nov 1883
W. E. Moore	19 Jan 1887
Discontinued	8 Mar 1887
Mail to Saint John	

Saint John, name changed from Ahosky Ridge

(Hertford)

Willie B. Carter	15 Feb 1841
James C. Wright	12 Nov 1844
Godwin C. Moore	11 Nov 1845
Godwin C. Moore, CSA	6 Jul 1861
CSA office closed on or before	30 Apr 1865
Richard T. Weaver	24 Oct 1866
Annie T. Moore	31 Aug 1885
Elisha H. Joyner	16 Dec 1886
James T. Liverman	13 Jun 1896
Jeno Jenkins	24 Apr 1903
Discontinued	15 Sep 1906
Mail to Aulander, Bertie County	



Manuscript
13 Oct 1859



Type 1
28.5 mm Black
3 Mar 1893
20 Feb 1902

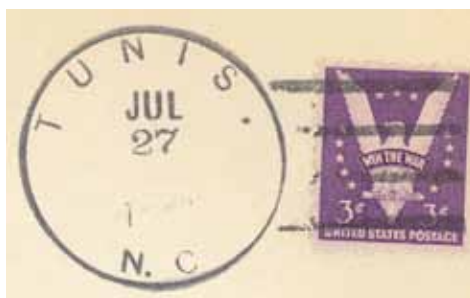
Tunis

(Hertford)

Henry W. Heird	28 Jul 1884
Joseph T. Tunis	21 May 1885
John A. Northcott	21 Jun 1895
David A. Owens	26 Oct 1901
Kenneth R. Israel	26 Aug 1905
Mattie A. Rives	19 Jan 1920
Joseph R. Hilder	11 Jan 1921
Kenneth R. Israel	3 Sep 1926
Discontinued	31 Oct 1943
Mail to Winton	



Type 1
29 mm Black
Metal Duplex Type H2
29 May 1909
16 Jun 1909



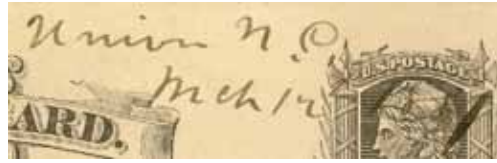
Type 2
35 mm Black
1936 Type F/1 4-Bar
27 Jul 194x

HERTFORD COUNTY

Union

(Hertford)

James P. Freeman	4 Jan 1878
William H. Sears	24 Nov 1882
James T. Wynns	10 Jun 1885
Roderick H. Gary	8 Jan 1889
Susie W. Charles	11 Nov 1889
Susie C. Dunn	30 Jan 1891
Sarah E. Knight	11 Sep 1897
James H. Darden	26 Aug 1901
Charles W. Vinson	31 May 1904
Discontinued	15 Oct 1906
Mail to Ahoskie	

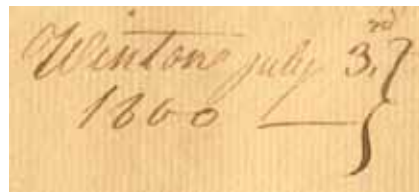


Manuscript
12 Mar 1881

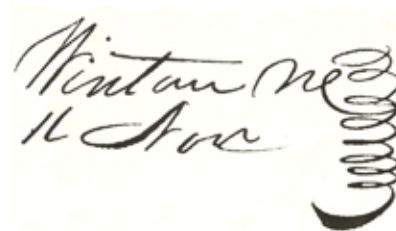
Winton

(Hertford)

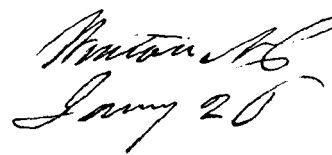
Lawrence Mooney	1 Oct 1794
Thomas Brickell	22 Oct 1796
Henry Wright	4 Aug 1797
Thomas W. Brickell	by Oct 1797
George W. Montgomery	25 Aug 1800
Patterson Gurley	26 Sep 1801
Francis Bell	1 Apr 1803
William Sherlock	by 11 Mar 1805
Howell Jones	1 Jul 1808
William Duer	1 Oct 1810
Garrison M. Smith	14 Apr 1813
John A. Anderson	12 Feb 1828
Discontinued	19 Apr 1830
Reddick Cross	6 May 1830
James Pruden	4 Aug 1830
William B. Wynn	20 Jan 1831
George J. Bason	18 May 1832
Lawrence Ely	8 Sep 1832
Reddick Cross	20 Sep 1833
Lawrence Eley	6 Oct 1836
Cordwell Vann	29 Dec 1840
John A. Anderson	25 Jan 1843
John A. Anderson, CSA	5 Jul 1861
W. D. Hollomon, CSA	3 Aug 1861
Site moved to California	14 Oct 1862
CSA office closed on or before	30 Apr 1865
Eben Shaw	1 Feb 1866
Andrew J. Northcutt	19 Dec 1866
R. H. Saunders	16 Jan 1882
S. S. Daniel	28 Apr 1885
George H. Mitchell	18 Apr 1889
Starkie S. Daniel	3 Aug 1893
Joseph B. Catus	24 Sep 1897
Adrian S. Mitchell	29 Sep 1910
Order rescinded	no date
Charles F. Mitchell	6 Jun 1913
Lunda V. Owen, Acting	30 Jun 1922
Lunda V. Owen	13 Dec 1922
John R. Jordan, Acting	17 May 1930
Ina L. Jordan, Acting	23 May 1930



Manuscript
3 Jul 1800
18 Jul 1808



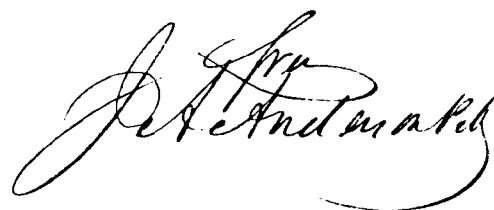
Manuscript
4 Jul 1816
6 Nov 1836



Manuscript Red
30 Nov 1839
16 Jul 1840

Manuscript
23 Feb 1847
20 Jul 1847

Manuscript Blue
11 Oct 1847
26 Jan 1848



Postmaster frank
20 Jan 1847
11 Oct 1847

HERTFORD COUNTY

Winton

(Hertford)

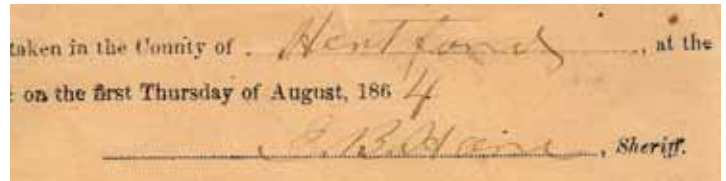
Ina L. Jordan	10 Mar 1931
Arthur P. Newsome, Acting	7 Feb 1936
Arthur P. Newsome	12 Mar 1936
Horace T. Downs	30 Mar 1945
Herbert M. Brett, Acting	1 Nov 1945
Herbert M. Brett	2 Jul 1947
Donald G. Blowe Officer-In-Charge	24 Nov 1972
William S. Crosby	12 May 1973
Frank Clary Jr. Officer-In-Charge	30 Jun 1979
Walter L. Housley	3 Nov 1979
Opal K. Brown Officer-In-Charge	29 Oct 1986
Phyllis J. DeBerry	6 Jun 1987
George Warren Officer-In-Charge	23 Apr 1991
Mike Fuller Officer-In-Charge	27 Aug 1991
George Warren Officer-In-Charge	4 Dec 1991
Mildred Vaughn Officer-In-Charge	6 Apr 1992
Robert Mike Fuller	27 Jun 1992
William A. "Tony" Cutrell Officer-In-Charge	9 Jun 1998
Gladys M. Etters Officer-In-Charge	6 Jul 1998
William A. "Tony" Cutrell	21 Nov 1998
Cecil T. Cherry	25 Mar 2000
Deborah M. Pierce	30 Nov 2013



Type 1
32 mm Blue
16 Sep 185x
19 Jul 1858

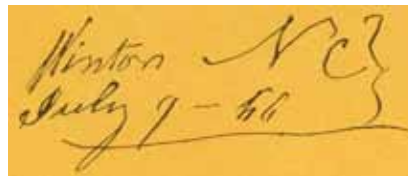
32 mm Black
1 Mar 1854

Confederate



No postmark on envelope but Sheriff's dating of pre-printed election return envelope served as postmark. Manuscript
4 Aug 864

Reconstruction



Manuscript
7 Jul 1866



Type 2
26.5 mm Black
20 Feb 187x
12 Apr 1878



Type 3
33 mm Magenta
18 Jun 1879
7 Sep 1880

HERTFORD COUNTY

Winton (Cont.)

(Hertford)



Type 4
27.5 mm Black
31 Dec 1884
27 Apr 1887



Type 5
28 mm Black
19 May 189x



Type 6
28 mm Black
15 Oct 1896
6 Dec 1901



Type 7
30 mm Black
Metal Duplex Type H2
28 Apr 1904
26 Jul 1915



Type 8
29 mm Black
8 Nov 1920

HERTFORD COUNTY

Winton (Cont.)

(Hertford)



Type 9
30.5 mm Black
Metal Duplex Type E2
15 Oct 1934
10 Apr 1950

30.5 mm Magenta
27 Dec 1946



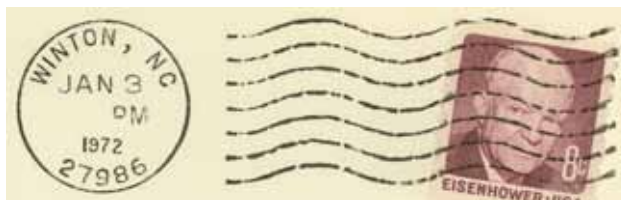
Type 10
30 mm Black
Metal Duplex Type H2
19 Jun 1935



Type 11
22.5 mm Black
International Machine
Type AT/S 2721
7 Jul 1950
7 Jul 1965



Type 12
33.5 mm Black
1963 Type F/2 4-Bar (27986)
5 Oct 1965
22 Jun 1976



Type 13
22.5 mm Black
International Machine
Type ATS/z 2721 (27986)
25 Jan 1966
1 Jul 1993

HERTFORD COUNTY

Winton (Cont.)

(Hertford)



Type 14
30.5 mm Black
Self-Inking Postmarker
Type 1B (27986)
13 Mar 1987

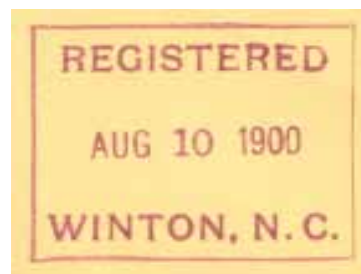


Type 15
33.5 mm Black
1963 Type F/2 4-Bar (27986)
15 May 1995
12 May 1998



Type 16
29 mm Red
3 Apr 2007

Registered



Type 1
43 x 31 mm Magenta
4 Aug 1900
10 Aug 1900

Third Class Cancelers



Type 1
42 x 20 mm Black
Apr 1964