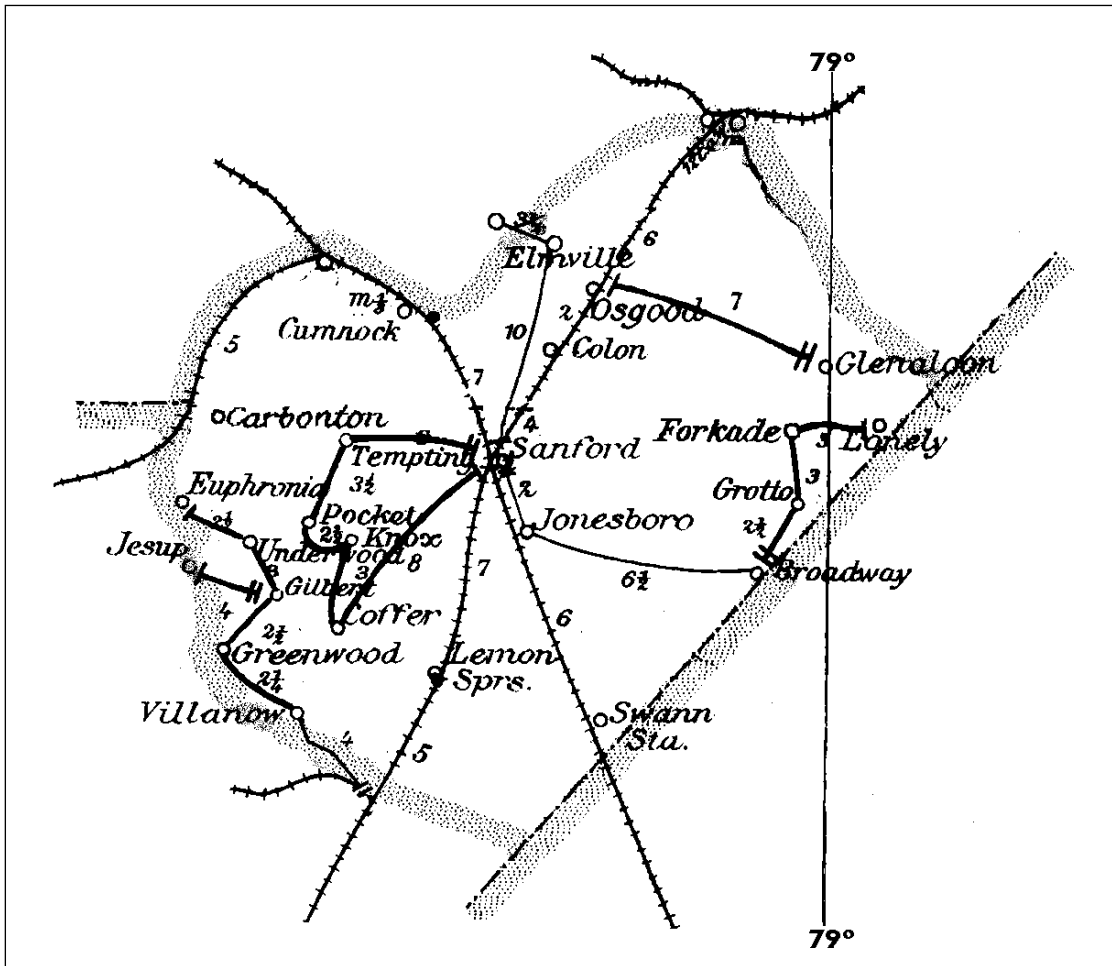


LEE COUNTY

Formed 1 April 1908 from Chatham and Moore Counties

Number of Post Offices - 9
Number with postmarks known - 8



LEE COUNTY

Broadway, from Moore County

(Lee)

James A. McNeill	1 Apr 1908
Julian D. Thomas	9 Apr 1914
Bertha J. Harrington (declined)	21 Sep 1917
Conrad E. Thomas	7 Oct 1917
Ilene Sloan	30 Jan 1924
Ilene Bowling (marriage)	4 Jan 1925
Laura E. Rosser, Acting	10 Jun 1932
Mrs Robbie J. McNeill	19 Oct 1932
Clara B. Rosser	1 Nov 1933
Leon Lewis Kelly, Acting	1 Feb 1938
Preston L. Morris	10 Jun 1938
Doris I. Cameron, Acting	25 Jan 1966
Doris I. Cameron	18 Aug 1966
Daniel C. Burch Sr.	15 Nov 1980
Danny Holland Officer-In-Charge	1 Aug 1987
Marvin T. Davis	21 Nov 1987
Ricky T. Rook Officer-In-Charge	1 Jun 1989
Dale R. Mancuso Officer-In-Charge	30 Sep 1989
Bobby Earl Hinton	16 Dec 1989
Jennifer Cummings Officer-In-Charge	7 Jan 2003
Teresa W. McMillian Officer-In-Charge	29 Jan 2003
Jennifer Cummings Officer-In-Charge	26 Jul 2003
Teresa W. McMillian	1 Nov 2003
Veronica C. Blegen Officer-In-Charge	1 Feb 2005
Teresa Perdue Officer-In-Charge	22 Feb 2006
Veronica C. Blegen Officer-In-Charge	12 Feb 2007
Veronica C. Blegen	17 Feb 2007
Veronica D. Coy (name changed)	25 Sep 2007
Veronica D. Coy-Sayre (marriage)	6 Aug 2010



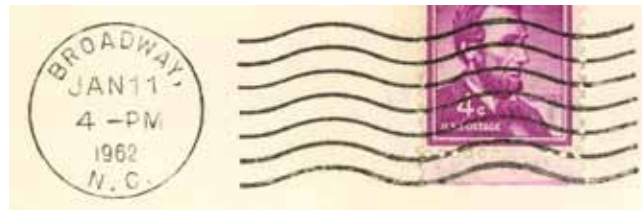
Type 1
31.5 mm Black
1908 Type A/2 4-Bar
27 Jan 1910



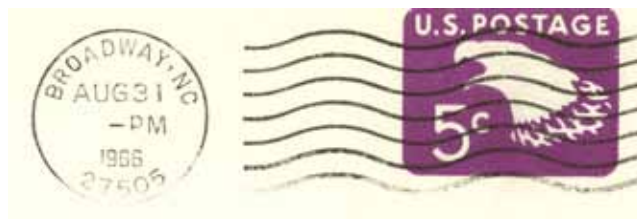
Type 2
33 mm Black
1910 Type B 4-Bar
18 Nov 1915
2 Jan 1917



Type 3
30 mm Black
Metal Duplex Type H2
22 Jan 1946
12 Aug 1957



Type 4
23 mm Black
International Machine
Type AT/S 2721
11 Jan 1962
5 Dec 1962



Type 5
23 mm Black
International Machine
Type ATS/z 2721 (27505)
6 Sep 1966
10 Jun 1996

LEE COUNTY

Broadway (Cont.)

(Lee)



Type 6
34 mm Black
1963 Type F/2 4-Bar (27505)
26 Mar 1971
29 May 1972



Type 7
30 mm Magenta
21 Nov 1981



Type 8
32 mm Magenta
1963 Type F/2 4-Bar (27505)
13 May 1983



Type 9
28.5 mm Magenta
15 Aug 1988



Type 10
35 mm Black
Self-Inking Postmarker (27505)
3 Nov 2000

LEE COUNTY

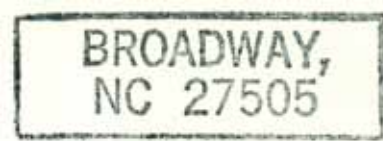
Broadway (Cont.)

(Lee)



Type 11
30.5 mm Red
Self-Inking Postmarker
(27505-9998)
15 Oct 2005
26 Feb 2007

Third Class Cancelers



Type 1
49 x 17 mm Black
26 Mar 1971

Carbonton (2), from Moore County

(Lee)

The post office records show that Carbonton (2) moved from Moore County to Lee County on 2 March 1908 and then moved again to Chatham County on 10 March 1908. Since Lee County was not officially formed until 1 April 1908, Carbonton (2) never was in Lees county. This catalog will show it moving from Moore County to Chatham County on 10 March 1908.

Colon, from Chatham County

(Lee)

Hume C. Booker	1 Apr 1908
Edward S. Utley	26 Oct 1912
Hume C. Booker	14 Jan 1920
Zora L. Ross, Acting	1 Jan 1945
Zora L. Ross	16 Apr 1946
Pauline L. Harton	7 Nov 1967
Dorothy Sloan Officer-In-Charge	19 Feb 982
Discontinued	13 May 1983
Mail to Sanford	



Type 1
34 mm Black
1936 Type F/1 4-Bar
6 Feb 1940
24 Sep 1941



Type 2
33 mm Black
1936 Type F/1 4-Bar
19 Apr 1949
6 Nov 1951

LEE COUNTY

Colon (Cont.)

(Lee)



Type 3
34 mm Black
1936 Type F/1 4-Bar
4 Sep 1957



Type 4
33.5 mm Black
1936 Type F/1 4-Bar
19 Sep 1964



Type 5
33.5 mm Magenta
1963 Type F/2 4-Bar (27236)
18 May 1965



Type 6
32 mm Black
1963 Type F/2 4-Bar (27236)
10 Jul 1970
27 Jan 1975



Type 7
30 mm Magenta
17 Sep 1973

LEE COUNTY

Colon (Cont.)

(Lee)



Type 8
 33 mm Black
 1963 Type F/2 4-Bar (27236)
 21 Feb 1978
 13 May 1983

Cumnock, from Chatham County

(Lee)

George F. Smith	1 Apr 1908
Mattie L. Smith, Acting	1 Feb 1940
Mattie L. Smith	25 Mar 1940
Lucille B. Spivey, Acting	30 Nov 1965
Discontinued	11 Feb 1966
Became Rural Station of Sanford	11 Feb 1966



Type 1
 32.5 mm Black
 1910 Type B 4-Bar
 3 Jun 1921



Type 2
 32.5 mm Black
 1925 Type C/1 4-Bar
 20 Apr 1928
 2 Jan 1930



Type 3
 32 mm Black
 1936 Type F/1 4-Bar
 26 Oct 1949
 28 Mar 1951

LEE COUNTY

Cumnock (Cont.)

(Lee)



Type 4
 33 mm Black
 1936 Type F/1 4-Bar
 29 Dec 1956
 8 May 1961



Type 5
 33 mm Purple
 1963 Type F/2 4-Bar (27237)
 13 Jul 1965

 33 mm Black
 17 Apr 1972
 31 Jan 1975

Jesup, from Moore County

(Lee)

Charles C. Underwood 1 Apr 1908
 Moved to Moore County 2 May 1911



Type 1
 30.5 mm Black
 Doane Type 3-2
 3 Apr 1908
 30 Dec 1908

Jonesboro, from Moore County

(Lee)

Burwell F. Godfrey 1 Apr 1908
 B. Rufus Avent 2 Feb 1914
 John W. Kelly 6 Feb 1923
 Charles M. Rosser 15 Jun 1932
 Robert A. Watson, Sr. 26 May 1936
 Discontinued 30 Jun 1948
 Mail to Sanford



Type 1
 30.5 mm Black
 Metal Duplex Type H2
 4 Feb 1909
 11 Sep 1925

LEE COUNTY

Jonesboro (Cont.)

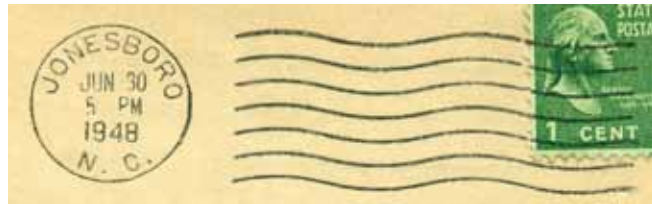
(Lee)



Type 2
30 mm Black
Metal Duplex Type H2
16 Oct 1928
20 Apr 1929



Type 3
30.5 mm Black
Metal Duplex Type E2
15 Nov 1940
27 Dec 1941



Type 4
21 mm Black
Universal Machine
Type DT 200
30 Jun 1948

Lemon Springs, from Moore County

(Lee)

George W. Smith	1 Apr 1908
John K. McLeod	1 Jun 1909
Addie McLeod	4 Feb 1915
Mamie C. Griffen, Acting	1 Feb 1936
Mamie C. Griffen	5 May 1936
John Lloyd Griffen, Acting	30 Apr 1968
Mary Francis Roberts	17 Jan 1969
Mary Francis Warner (marriage)	24 Nov 1971
Diane K. Bryant Officer-In-Charge	30 Sep 1992
Teresa W. Tanner	20 Feb 1993
Diane K. Bryant	28 Sep 1996
Converted to a Level 6 (6-hour) remotely managed post office of Cameron. The postmaster position remained until ultimately vacated.	10 Jan 2015



Type 1
32 mm Black
1908 Type A/1 4-Bar
29 Nov 1912
27 Apr 1915



Type 2
32 mm Black
1910 Type B 4-Bar
22 Oct 1915
19 May 1916

LEE COUNTY

Lemon Springs (Cont.)

(Lee)



Type 3
32.5 mm Black
1925 Type C/1 4-Bar
8 Oct 1931



Type 4
33 mm Black
1936 Type F/1 4-Bar
13 Oct 1941
31 Dec 1951



Type 5
34 mm Black
1936 Type F/1 4-Bar
25 Sep 1963
8 Jun 1964



Type 6
30.5 mm Magenta
25 Sep 1963



Type 7
34 mm Black
1963 Type F/2 4-Bar (28355)
12 Oct 1966
13 Apr 1983

LEE COUNTY

Lemon Springs (Cont.)

(Lee)



Type 8
30 mm Magenta
27 Sep 1971



Type 9
32.5 mm Black
1963 Type F/2 4-Bar (28355)
26 Nov 1985
12 Oct 1990



Type 10
31.5 mm Black
Self-Inking Postmarker
Type 1A (28355)
2 Oct 1993
2 Aug 1995



Type 11
35 mm Black
Self-Inking Postmarker (28355)
3 May 1996
8 Nov 1996

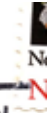
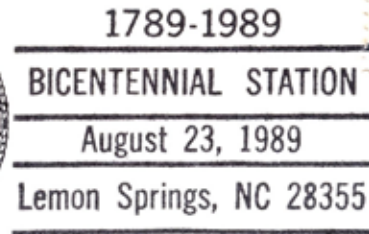
LEE COUNTY

Lemon Springs (Cont.)

(Lee)

Temporary Station Cancels

Bicentennial Station



Type 1
87.5 x 36.5 mm Black
(28355)
23 Aug 1989

Osgood, from Chatham County

(Lee)

Hattie Deaton	2 Mar 1908
Philip C. Yarborough	15 Jun 1923
Discontinued	31 Jan 1928
Mail to Sanford	

Sanford, from Moore County

(Lee)

Samuel M. Jones	1 Apr 1908
Samuel V. Scott	2 Jul 1913
John W. Gilliam	21 Jun 1922
Ralph A. Kennedy, Acting	25 Aug 1931
Ralph A. Kennedy	4 Apr 1932
S. Vance Scott, Acting	6 Mar 1935
Annie L. Scott	13 Aug 1935
Edward A. Griffen, Acting	31 Jul 1962
Edward A. Griffen	5 Oct 1962
P. P. PerMar, Jr. Officer-In-Charge	3 Feb 1975
William P. Edwards	26 Apr 1975
William M. Jones, Jr. Officer-In-Charge	29 Jun 1983
Robert C. Maples	29 Oct 1983
Joseph E. Clark Officer-In-Charge	29 Jul 1988
A. Ray Ingram Officer-In-Charge	21 Oct 1988
Joseph E. Clark	11 Feb 1989
Wayne Carmack Officer-In-Charge	2 Sep 1992
Jim L. Carter Officer-In-Charge	10 Dec 1992
Edward G. Odom Jr. Officer-In-Charge	11 Jan 1993
Edward G. Odom Jr.	6 Feb 1993
Sylvia Bullins Officer-In-Charge	29 Jan 2007
Sharon Patrick Officer-In-Charge	28 Sep 2007
Sylvia Bullins Officer-In-Charge	3 Jun 2008
Ronnie C. Warren Jr. Officer-In-Charge	31 Mar 2009
Ronnie C. Warren Jr.	29 Aug 2009
Darlene P. Williams Officer-In-Charge	9 Feb 2011



Type 1
30 mm Black
Metal Duplex Type H2
3 Aug 1909
1 Apr 1914



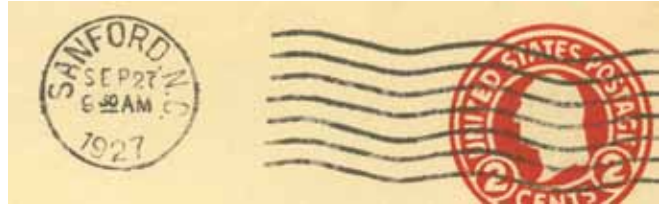
Type 2
26 mm Black
Metal Duplex Type E2
1 Feb 1916
5 Aug 1922

LEE COUNTY

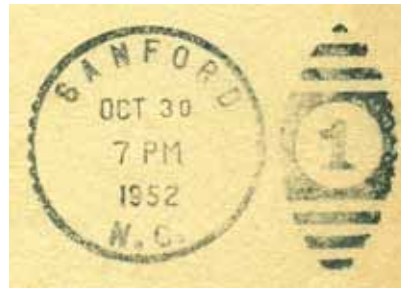
Sanford (Cont.)

(Lee)

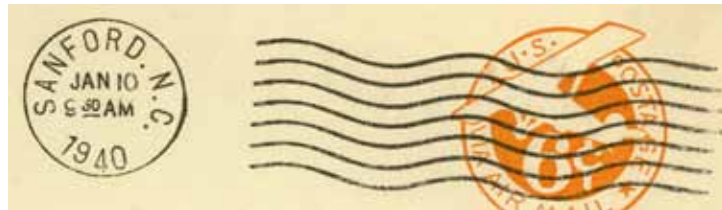
Darlene P. Williams	16 Jul 2011
Michael Amory Officer-In-Charge	22 Oct 2012
Larry Dean Fields	7 Sep 2013
Scott Deck Officer-In-Charge	27 Aug 2015
Donald Sherman Jourdian	2 Apr 2016
Lois C. Boykin	1 Sep 2018



Type 3
20.5 mm Black
International Machine
Type D30
5 Nov 1926
27 Sep 1927



Type 4
31.5 mm Black
Metal Duplex Type E2
6 Feb 1937
17 Apr 1954



Type 5
21 mm Black
International Machine
Type D30
10 Jan 1940
11 Jul 1944



Type 6
21 mm Black
International Machine
Type D30
13 Jul 1950
29 Dec 1955



Type 7
30.5 mm Black
26 Jul 1951

LEE COUNTY

Sanford (Cont.)

(Lee)



Type 8
31 mm Magenta
4 Jan 1955



Type 9
21 mm Black
Interntional Machine
Type D400 (Pray/For/
Peace) (wide spacing)
17 Jul 1959
11 Sep 1961



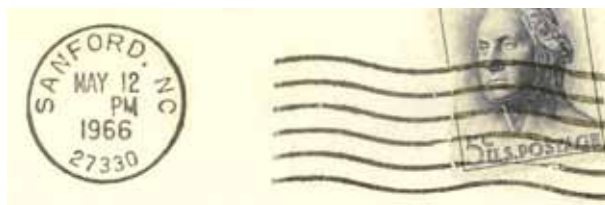
Type 10
35.5 mm Black
15 Jan 1960
13 Oct 1964



Type 11
21 mm Black
Interntional Machine
Type D400 (Pray/For/
Peace) (narrow spacing)
27 Sep 1961
22 Jan 1962



Type 12
21 mm Black
Universal Machine
Type DT 300
10 Jul 1963
5 Aug 1965



Type 13
21 mm Black
Universal Machine
Type DTS/z 300
12 May 1966
6 Apr 1992

LEE COUNTY

Sanford (Cont.)

(Lee)



Type 14
21 mm Black
Universal Machine
Type DTS/z 400 (Christmas
Seals/Fight Emphysema/TB.
Air Pollution) (27330)
15 Dec 1969
3 Jan 1976



Type 15
33.5 mm Black
1963 Type F/2 4-Bar (27330)
1 Jul 1971



Type 16
29 mm Magenta
14 Apr 1978



Type 17
21 mm Black
Universal Machine
Type DTS/z 400 (Support/
American/Education Week)
(27330)
21 Nov 1986



Type 18
30.5 mm Red
Self-Inking Postmarker (27330)
4 Dec 2000

LEE COUNTY

Sanford (Cont.)

(Lee)



Type 19
30 mm Red
Self-Inking Postmarker (27330)
2 Jun 2004
21 Mar 2006



Type 20
30.5 mm Red
Self-Inking Postmarker
(27330-9998)
25 Jun 2007
19 Dec 2007

Station Cancels

Hallmark Station #009736

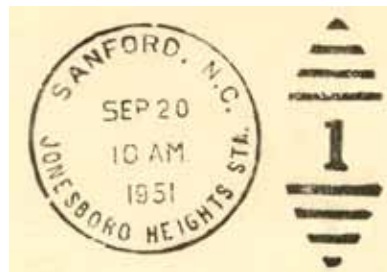


Type 1
30.5 mm Red
Self-Inking Postmarker (27330)
25 Jun 2004

Jonesboro Heights Station

Before 1949

Jan 1989



Type 1
30.5 mm Black
Metal Duplex Type ?
20 Sep 1951
4 Mar 1957

LEE COUNTY

Sanford (Cont.)

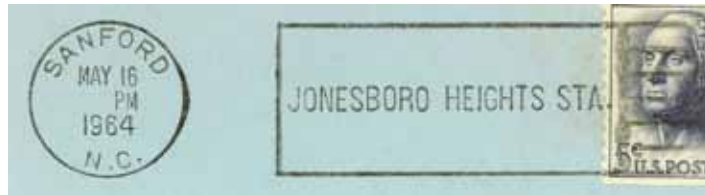
(Lee)

Station Cancels (Cont.)

Jonesboro Heights Station (Cont.)



Type 2
35.5 mm Black
14 May 1957
12 Dec 1960



Type 3
20.5 mm Black
Universal Machine
Type DT 400 (Jonesboro Heights Sta.)
12 Feb 1963
14 Jul 1965



Type 4
21 mm Black
Universal Machine
Type DTSz 400 (Jonesboro Heights Sta.) (27330)
12 Oct 1966
12 Mar 1971



Type 5
29.5 mm Magenta
26 Jan 1973



Type 6
35 mm Black
1963 Type F/2 4-Bar (27330)
9 May 1984

LEE COUNTY

Sanford (Cont.)

(Lee)

Rural Station Cancels

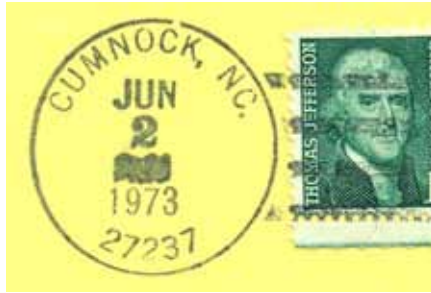
Cumnock Rural Station

11 Feb 1966

30 Sep 1988



Type 1
28.5 mm Red
12 Dec 1970
12 Jul 1985



Type 2
33.5 mm Black
1963 Type F/2 4-Bar (27237)
2 Jun 1973
12 Jul 1985

Registered



Type 1
28.5 mm Purple
20 Jul 1943



Type 2
28.5 mm Red
4 Aug 1947

LEE COUNTY

Swann Station, from Moore County

(Lee)

Hugh D. Cameron 1 Apr 1908
Litha Camero 26 Apr 1910
Mary L. Womack 17 Feb 1911
Sallie T. Walker 26 Jul 1924
Discontinued 15 May 1925
Mail to Jonesboro



Type 1
30 mm Black
Doane Type 2-3
19 Jun 1909
16 Feb 1914