

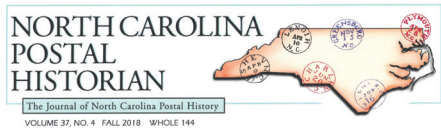
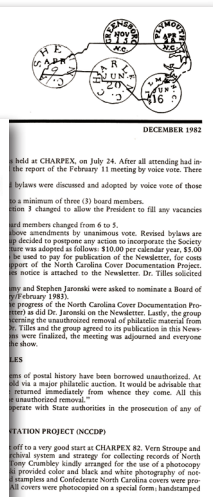
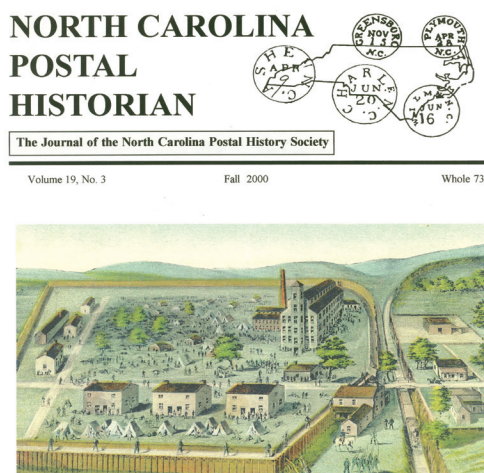
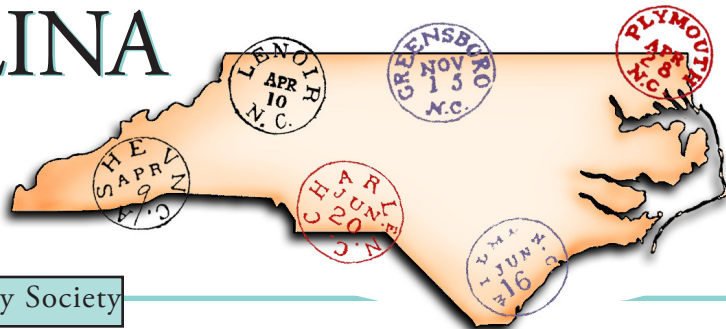
NORTH CAROLINA POSTAL HISTORIAN

The Journal of North Carolina Postal History Society

VOLUME 38, NO. 2 SUPPLEMENT

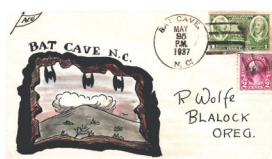
SPRING 2019

WHOLE 146 SUPPLEMENT



Confederate Prison at Salisbury

Affiliate #155 of the American Philatelic Society



The Cave Post
Offices of North
Carolina

Affiliate #155 of the American Philatelic Society



Special Supplement

Author and Subject Indexes of the North
Carolina Postal History Society Journal
By Maurice M. Bursey

Affiliate #155 of the American Philatelic Society



IN THIS SUPPLEMENT ISSUE

Author Index by Maurice M. Bursey.....3

Subject Index by Maurice M. Bursey.....19



NORTH CAROLINA POSTAL HISTORIAN

(Library of Congress No. ISSN 1054-9188.)

Web site www.ncpostalhistory.com

The North Carolina Postal Historian is the official journal of the North Carolina Postal History Society. It is published quarterly in January, April, July and October.

Membership in the Society is \$15 per year. Applications for membership may be obtained from the Secretary/Treasurer. Submissions for the *Postal Historian* or inquiries may be addressed to the editors.

President

Charles F. Hall, Jr.
120 Kings Heights Blvd
Kinston, NC 28501
fhall@suddenlink.net

Vice-President

Gene Lightfoot
111 Dear Valley Drive
Cary, NC 27519
my68gt@aol.com

Secretary/Treasurer

Harry Albert
105 Gatestone Court
Cary, N.C. 27518
harry.albert@eeco-net.com

Editors

Tony L. Crumbley PO Box 681447 Charlotte, NC 28216 tcrumbley2@bellsouth.net	Richard F. Winter 5432 Geneva Terrace Colfax, NC 27235 rfwinter645@gmail.com
--	--

Board of Directors

Term Ending 2019

Scott Steward
Charles F. Hall, Jr
Harry Albert

Term Ending 2020

Richard F. Winter
Bill DiPaolo
Gene Lightfoot.

Term Ending 2021

Alan Vestal
George Slaton

Author Index

By Maurice M. Bursey

North Carolina Postal History Society Newsletter (Issues 1 - 15)

NCPHS Newsletter (Issues 16 - 49 , Volume 5, No. 1 - Volume 13, No. 2)

North Carolina Postal Historian (Issues 50 - 144, Volume 13, No. 3 - Volume 37, No. 4)

This Author Index is in alphabetical order. It includes exact titles of the works as printed in the journal, with an explanatory note in brackets if the title does not indicate the subject sufficiently. When the article has been reprinted from another source, the original source is identified.

Citations consist of volume number and issue number. Until 1986, issues were numbered consecutively, without a volume number. Beginning with 1986, volume numbers were added, the volume for 1986 being designated as Volume 5, and the preceding issues were designated Volumes 1 to 4 according to year. Beginning with Volume 5, there are four numbers per year, except for the following:

Vol. 8, 1984	3 numbers	winter, summer, fall
Vol. 11, 1991-92	5 numbers	winter, spring, summer, fall, winter
Vol. 13, 1994	3 numbers	spring, summer, fall
Vol. 18, 1999	3 numbers	summer, fall, winter
Vol. 19, 2000	3 numbers	spring, summer, fall
Vol. 23, 2004	3 numbers	spring, summer, fall

There were several errors in numbering or dating certain issues when they were printed.

Designation in original issue	Corrected designation used here
No. 7 (Vol. 3, No. 1) Feb. 1984	No. 8 (Vol. 3, No. 1) Feb. 1984*
Vol. 9, No. 2, Spring 1991	Vol. 10, No. 2, Spring 1991*
Vol. 10, No. 2, Summer 1991	Vol. 10, No. 3, Summer 1991*
Vol. 11, No. 3, Fall 1992	Vol. 11, No. 4, Fall 1992*
Vol. 11, No. 4, Winter 1992	Vol. 11, No. 5, Winter 1992*
Vol. 12, No. 4, Summer 1993	Vol. 12, No. 4, Fall 1993*
Vol. 25, No. 2, Summer 2006	Vol. 25, No. 3, Summer 2006*

*In the indexes, asterisks are used after references to these issues.

Vol. 11, No. 1, Winter 1992, is an accompaniment to *North Carolina Post Offices and Postmasters 1860-1866*, distributed to members. Vol. 13, No. 1, is a letter of 10 April 1994 from Tony L. Crumbley, Editor, to booksellers, announcing *Postal Markings of North Carolina Railroads*. Vol. 28, No. 1, Winter 2008, has an inserted one-sheet addendum.

Society announcements, auction results, and meeting minutes are omitted from the indexes.

Acee, Marshall

Who's Who in the NCPHS [Dr. Harvey G. Tilles, biographical sketch]	Vol. 26, No. 1, Winter 2006-07: 3
Who's Who in the NCPHS [Stefan T. Jaronski, biographical sketch]	Vol. 26, No. 2, Spring 2007: 3, 14
Who's Who in the NCPHS [Phillip Perkinson, biographical sketch]	Vol. 26, No. 3, Summer 2007: 3, 16
Who's Who in the NCPHS [Jerry R. Roughton, biographical sketch]	Vol. 26, No. 4, Fall 2007: 3
Who's Who in the NCPHS [Tony L. Crumbley, biographical sketch]	Vol. 27, No. 1, Winter 2008: 3, 16

Allen, John

Meet Founding Member John Allen	Vol. 28, No. 2, Spring 2009: 3
---------------------------------	--------------------------------

Arthur, Billy

Father of Rural Mail Service [John Steele Henderson, From Our State, March 1997: 14-15]	Vol. 16, No. 2, Summer 1997: 3-4
--	----------------------------------

Baum, Larry	
Confederate Advertising Census of NC	Vol. 26, No. 2, Spring 2006: 4-11
Bokoski, Dudley	
166 Years of the Madison Post Office	Vol. 6, No. 1, Winter 1987: 3-10
Bolden, Don	
Company Shops, Burlington Had a Third Name [from the Burlington Times-News, Sept. 1, 1993]	Vol. 13, No. 4, Fall 1994: 8-9
Boubelik, Charles, Compiler	
North Carolina Post Offices Opened during the Doane Period	Vol. 11, No. 2, Spring 1992: 8-10
Brown, Throop C.	
Snow Camp Doesn't Exist in Cyberspace	Vol. 24, No. 3, Summer 2005: 14
Who Says Mail Delivery Has Improved over Time? [Siler City to Snow Camp in 1893 and 2004]	Vol. 24, No. 3, Summer 2005: 15
Burkette, D. Wayne	
Constantine Alexander Hege and Salem Iron Works	Vol. 36, No. 1, Winter 2016: 7-11
Bursey, Maurice M.	
Covers from Union Soldiers in North Carolina during the Civil War	Vol. 27, No. 2, Spring 2008: 4-15
Magnus Illustrated Envelopes Related to North Carolina	Vol. 27, No. 4, Fall 2008: 3-10
Mendenhall and Shumaker, Raleigh Cachet Creators of The Early 1930s	Vol. 28, No. 4, Fall 2009: 8-11
New Bern Postal Service During the Civil War	Vol. 35, No. 3, Summer 2016: 3-15
Patriotic Confederate Envelopes and Covers from North Carolina, W. & J. Bonitz Envelopes from Goldsboro	Vol. 28, No. 1, Winter 2009: 3-8, Addendum
Patriotic Confederate Envelopes and Covers from North Carolina, Part 2. "Whitaker, Wilmington"	Vol. 28, No. 2, Spring 2009: 4-8
Patriotic Confederate Envelopes and Covers from North Carolina, Part 3. "Lowenburg & Bro., Beaufort, N.C."	Vol. 28, No. 2, Spring 2009: 11-14
Some Civil War Covers Addressed to Ralph Gorrell and his Family	Vol. 36, No. 2, Summer 2016: 3-7
Some Confederate Semi-Official Covers from the Executive Department in Raleigh	Vol. 30, No. 1: Winter 2010: 10-16
Some North Carolina Confederate Covers Addressed to Thomas Ruffin	Vol. 33, No. 2: Spring 2014: 12-16
Some Raleigh Covers Commemorating the Quasiquicentennial and Other Anniversaries of Andrew Johnson's Birth	Vol. 34, No. 1, Winter 2014: 8-12
Some Semi-Official Return Envelopes from the Gubernatorial Election of 1864	Vol. 37, No. 3, Summer 2018: 20-25
Bush, Conrad L.	
Pair of Historical North Carolina Letters, A [Statesville, Apr. 10, Apr. 27, 1865]	Vol. 7, No. 3, Summer 1988: 8-9
Capps, Greg	
Old Glenrock Station – and a Spooky Post Card, The	Vol. 36, No. 1, Winter 2016: 12-13
Cate, Jim	
North Carolina – American Freedom Train 1976	Vol. 32, No. 4, Fall 2013: 5-8
Cieselski, Greg	
Multiple Kitty Hawk, NC Devices?	Vol. 31, No. 4, Fall 2012: 13
Cohn, Ernst M.	
Confederate Mails in North Carolina [from <i>Postal History Journal</i> , No. 82, June 1989; a review of, <i>Self-Sufficiency at All Costs: Confederate Post Office Operations in North Carolina, 1861-65</i> by Richard F. Ridgway]	Vol. 8, No. 2, Summer 1989: 4
Cooke, Edward E.	
Galveston, North Carolina Post Office 1888-1902	Vol. 36, No. 3, Summer 2017: 18-19

Corbitt, David L.

Bids for Carrying the United States Mails [from the *North Carolina Historical Review*, Vol. 8, No. 2, 1931: 207-212]

Vol. 10, No. 2, Spring 1991*: 3-5

Crosby, Joe H.

From Madison, North Carolina, to Woods, Texas
North Carolina Use of United States Postage During the
Confederate State Period, A

Vol. 30, No. 3, Summer 2011: 17
Vol. 21, No. 4, Winter 2002-03: 9-10

Crumbley, Tony L.

6 ¼ Cent Rate, The
1859 Visit to Charlotte, An
1869 Issue Used from North Carolina, The
1930 Type "E" Four-Bar Cancel, The
A. C. Roessler's Carolina Connection
Airplane Crash Mail of North Carolina
All-North Carolina Airmail Week, October 11-16, 1937
All North Carolina Air Mail Flight of 1937, The
Bartonsville, The Classic North Carolina Postal Marking
Bath – The Cradle of North Carolina
Battle over North Carolina's First Postmistress, The
Camp Greene
Bertie County Historical Find, A
Black Cities of Wake [Oberlin, Method]
Book Review: *Dirty Ankle is Far from Bath, N.C.: How 50 Carolina
Cross Roads Got Their Curious Names* by Henry King
Charlotte Airport Mail Facilities
China Grove 1823 to Date
Collecting beyond the Covers [Post Cards Illustrating
Post Offices]
Company Shops, A Brief Passage in Time
Confederate "Green Jacks" Used from North Carolina
Confederate Mails on the North Carolina Railroads
Confederate States Frameline Used in North Carolina, The
Contract Airmail First Flights
Dated North Carolina Corner Cards Used as Postal Markings
Davidson College
Davis School – A Military Boarding School
Doane Numeral Handstamp Cancels
Doanes On-line
Dog's Tale, A [Lillington, Four Oaks, to Dixie Hound Kennels, IL]
Doremus Machine Cancels of North Carolina
Ducks, Turkeys, Aeroplanes Make an Interesting Era
of Postal History Collecting
Dunn's Rock, NC Post Office 1855-1877
Dunnsville, A Confederate Only Post Office
Durham, Its Legend in Tobacco
Early Reconstruction Letter from Raleigh, North Carolina, An
E Bay Addition, An [Scott 650, Roessler Kitty Hawk Precancel]
Edenton, North Carolina – A Postal History Giant
Elizabeth City, Stampless Handstamp Rate Markings 1835-1840
Express Mail of 1836-1839
Fighting Ships Called "North Carolina"
Find of Interest, A [fancy cancel, Southport, 1891]
First Federal Issue Revenue of North Carolina, 1798-1801, The

Vol. 7, No. 2, Spring 1988: 12
Vol. 10, No. 1, Winter 1991: 14-15
Vol. 15, No. 1, Winter 1996: 3-9
Vol. 14, No. 4, Fall 1995: 3-8
Vol. 22, No. 3, Fall 2003: 11-12
Vol. 22, No. 2, Summer 2003: 17
Vol. 22, No. 4, Winter 2003-04: 3-19
Vol. 16, No. 4, Winter 1997-98: 6-10
Vol. 20, No. 2, Summer 2001: 3-5
Vol. 25, No. 1, Winter 2005-06: 3-7
Vol. 28, No. 2, Spring 2009: 14-15
Vol. 12, No. 2, Spring 1993: 9-10
Vol. 33, No. 2, Spring 2014: 8-11
Vol. 20, No. 3, Fall 2001: 10-11
Vol. 14, No. 2, Summer 1995: 15

Vol. 22, No. 3, Fall 2003: 16
Vol. 16, No. 2, Summer 1997: 4-5
Vol. 25, No. 1, Winter 2005-06: 14-15

Vol. 13, No. 2, Spring 1994: 9-15
Vol. 14, No. 2, Spring 1995: 3-6
Vol. 16, No. 1, Spring 1997: 8-12
Vol. 19, No. 1, Spring 2000: 7
Vol. 22, No. 2, Summer 2003: 3-17
Vol. 17, No. 1, Spring 1998: 3-5
Vol. 21, No. 3, Fall 2002: 3-10
Vol. 24, No. 3, Summer 2005: 8-9
No. 5 (Vol. 2, No. 2), May 1983: 2-3
Vol. 24, No. 2, Spring 2005: 14-15
Vol. 18, No. 3, Winter 2000: 3-4
No. 7 (Vol. 2, No. 4), Nov. 1983: 6-7
Vol. 11, No. 3, Summer 1992: 7-9

Vol 37, No. 2, Winter 2018: 14-17
Vol. 27, No. 3, Summer 2008: 3
Vol. 21, No. 1, Spring 2002: 7-10
Vol. 20, No. 2, Summer 2001: 8-10
Vol. 22, No. 4, Winter 2003-04: 20
Vol. 30, No. 3, Summer 2011: 10-14
Vol. 34: No. 1, Winter 2014: 16-19
Vol. 17, No. 2, Summer 1998: 3-7
Vol. 14, No. 3, Summer 1995: 3-13
Vol. 6, No. 4, Fall 1987: 13
Vol. 12, No. 4, Fall 1993*: 8-10

First Postal Issue of the U.S. Postal Service, The [7-1-71 First Day Covers from North Carolina]	Vol. 17, No. 3, Fall 1998: 14-15
Four U.S.S. <i>Raleighs</i> , The	Vol. 18, No. 2, Fall 1999: 3-8
General Sherman's March Across North Carolina	Vol. 17, No. 3, Fall 1998: 3-5
Gold Hill, North Carolina's Premier Gold City	Vol. 16, No. 1, Spring 1997: 14-15
Greensboro, N.C., or Is It Greensborough, N.C.	Vol. 13, No. 4, Fall 1994: 12-15
Hillsborough Military Academy	Vol. 23, No. 1, Spring 2004: 39
History of Air Mail Service in North Carolina	No. 4 (Vol. 2, No. 1), Feb. 1983: 1-3
How Bear Poplar Got Its Name	Vol. 16, No. 1, Spring 1997: 5-6
Hugh Jarvis Horne, Sr., The First North Carolina Postal History Collector?	Vol. 36, No. 4, Fall 2017: 14-17
Ignored North Carolina History, Camp Sutton, German Prisoner-of-War Camp, 1944-46	Vol. 18, No. 2, Fall 1999: 9-11
Impossible Cover, The [Fake Hobby Shop USS <i>Asheville</i> cover]	Vol. 19, No. 1, Spring 2000: 3
Introduction to the Military Encampments of North Carolina, An	Vol. 12, No. 1, Winter 1992-93: 3-14
Industrial Revolution in the Postal System, The First Decades of the 20th Century – Part 1	Vol. 21, No. 4, Winter 2002-03: 3-7
Industrial Revolution in the Postal System [Part 2]	Vol. 22, No. 1, Spring 2003: 11-17
Is It, or Isn't It? The Carolina City Provisional	Vol. 5, No. 4, Oct. 1986: 10-14
James City: A Black Community in North Carolina	Vol. 15, No. 3, Summer 1996: 3-4
Jamesville and Washington Railroad, a. k. a. "Jolt and Wiggle"	Vol. 35, No. 3, Summer 2016: 16-18
Jerusalem	Vol. 15, No. 2, Spring 1996: 3-5
Kannapolis, North Carolina – Its First 100 Years as a Textile Town	Vol. 29, No. 4, Fall 2010: 12-18
Kittrell's Springs	Vol. 24, No. 4, Fall 2005: 10-14
Kitty Hawk, an Annual Celebration	Vol. 34, No. 1, Winter 2011: 6-14
Largest North Carolina Confederate Collection Sold	Vol. 36, No. 2, Spring 2017: 8-10
Last Days of the Confederate Prison at Salisbury, The	Vol. 19, No. 3, Fall 2000: 4-6
Lost Wilmington Stamps, The	Vol. 20, No. 1, Spring 2001: 12-15
Madison, North Carolina	Vol. 25, No. 4, Fall 2006: 4-7
Martindale Markings, The	Vol. 12, No. 4, Fall 1993*: 11
Mechanic, North Carolina – A New Straight-Line Cancel	Vol. 29, No. 2, Spring 2010: 11
Metal Duplex Cancels – A North Carolina Research Project in Need	Vol. 34, No. 4, Fall 2015: 3-8
Mining Town of Ore Knob, Ashe County, The	Vol. 17, No. 1, Spring 1998: 9
Modern Day Postal History Project, A	Vol. 26, No. 1, Winter 2006-07: 3-5
More on Rural Station Markings [Blue Ridge Rur. Sta.]	Vol. 16, No. 3, Fall 1997: 13
Mourning Covers from North Carolina	Vol. 23, No. 3, Fall 2004: 3-8
Murfreesboro's Wesleyan Female Academy	Vol. 20, No. 3, Summer 2001: 5-8
Murphey or Murphy: A City by Either Spelling	Vol. 35, No. 2, Spring 2016: 13-17
National Air Mail Week – May 15-21, 1938 (A North Carolinian the National Chairman)	No. 13 (Vol. 4, No. 2), Apr. 1985: 5-6
National Air Mail Week Revisited on the 100th Anniversary of the First Air Mail Service	Vol. 37, No. 3, Summer 2018: 3-19
N.C. Doane Cancel Update	Vol. 15, No. 2, Spring, 1996: 7-12
New Chapel Hill Marking, A [1827]	Vol. 5, No. 4, Oct. 1986: 17
New Charlotte Crown Comes to Light, A	Vol. 8, No. 2, Summer 1989: 4
Newly Discovered Confederate Express Company Label, A	Vol. 9, No. 2, Spring 1990: 6-8
North Carolina Airport Dedications	Vol. 22, No. 1, Spring 2003: 3-10
North Carolina at Sea	Vol. 19, No. 2, Summer 2000: 3-15
North Carolina Confederate Color Cancels	Vol. 30, No. 3, Summer 2011: 13-16
North Carolina Confederate Fantasies, The	Vol. 13, No. 4, Fall 1994: 4
North Carolina Fortifications, An Encyclopedia of Military Bases in North Carolina, Part Two	Vol. 12, No. 2, Spring 1993: 3-8

North Carolina Institution for the Deaf and Dumb and Blind – 1844	Vol. 28, No. 4, Fall 2009: 3-7
“North Carolina, October 15, 1759” – Earliest Known Usage	Vol. 10, No. 2, Spring 1991*: 6-7
North Carolina Postal History Bibliography	No. 12 (Vol. 4, No. 1), Jan. 1985: 5-9
North Carolina’s Copy of the Declaration of Independence [Bill of Rights, title error]	Vol. 23, No. 2, Summer 2004: 13-15
North Carolina’s Faces in the War of 1812	Vol. 32, No. 3, Summer 2013: 13-19
North Carolina’s Only Embossed Postmark? [Glen Anna Female Seminary, Taylorsville]	Vol. 15, No. 3, Summer 1996: 10-11
North Carolina’s Reconstruction Years, 1865 – 1876	Vol. 31, No. 2, Spring 2012: 11-16
North Carolina’s Registered Letters	Vol. 30, No. 4, Fall 2011: 3-9
North Carolina’s Tobacco Advertising Covers	Vol. 28, No. 3, Summer 2009: 3-8
O. A. Keehln’s Salem Post Office	Vol. 5, No. 2, Apr. 1986: 2-5
Official Government Airmail Flights from North Carolina	Vol. 22, No. 3, Fall 2003: 14-15
On a Warm, Clear September Morn... , The Lenoir Provisional	Vol. 7, No. 3, Summer 1988: 3-7
Only Known Copy, The [Franklin, Salisbury, Hillsboro, Chapel Hill, Gaston, Greensboro Confederate Postmaster Provisionals; Shallotte 1858 Free; Charlotte 1897 Tractor Tire Cancel]	Vol. 10, No. 2, Spring 1991*: 8-11
Oxford – The City of Two Orphanages	Vol. 26, No. 1, Winter 2006-07: 13-15
Oxford Female College, Oxford, NC	Vol. 35, No. 1, Winter 2015: 16-19
Pamlico County	Vol. 23, No. 2, Summer 2004: 3-11
Patterson, N.C. Confederate Fancy Cancels, The	Vol. 11, No. 3, Summer 1992: 5
Philatelic Truck – A First Day of Issue for North Carolina	No. 7 (Vol. 3, No. 1), Feb. 1984*: 3-6
Piedmont Wagon Company – Hickory, North Carolina	Vol. 36, No. 4, Fall 2017: 18-19
Pine Bluff – The Other Carolina Resort Community	Vol. 26, No. 3, Summer 2007: 4-6
Portsmouth Island, NC	Vol. 26, No. 4, Fall 2007: 4-7
Postal History of Charlotte, North Carolina, The	No. 11 (Vol. 3, No. 4), Nov. 1984: 1-10
Postal History of Dare County, A	Vol. 7, No. 1, Winter 1988: 3-12
Postal History of Wake Forest University, A	Vol. 33, No. 1, Winter 2013: 3-10
Postal Route from Cherry Lane to Trap Hill, The	Vol. 17, No. 2, Summer 1998: 8-11
President Winter Wins Large Gold!	Vol. 29, No. 4, Fall 2010: 11
Purple Machine Cancels of North Carolina, The	Vol. 20, No. 1, Spring 2001: 9-11
Quarter Cent Tip for the Postmaster, A [6¼ cent rate]	Vol. 18, No. 1, Summer 1999: 6-10
Railroad One Day, A Cannon the Next, A [Statesville Line; Atlantic, Tennessee, and Ohio Railroad; Davidson College, A.T. & O. postmark]	Vol. 10, No. 4, Fall 1991: 2
Raleigh & Gaston Railroad, The	Vol. 30, No. 2, Winter 2011: 14-17
Raleigh, North Carolina, A Variety of Color	Vol. 32, No. 1, Winter 2012: 12-16
Raleigh’s 68XU1 Provisional, Another Variety	Vol. 27, No. 3, Summer 2008: 11-13
Recent Discovery, A [fancy CDS, Winston-Salem, 1833]	Vol. 5, No. 2, Apr. 1986: 5
Red Springs, North Carolina: Flora MacDonald College	Vol. 32, No. 4, Fall 2013: 12-15
Reidsville, North Carolina	Vol. 31, No. 4, Fall 2012: 18-19
Revisiting the Confederate 2c Green Jackson Issue	Vol. 14, No. 4, Fall 1995: 14
Richard P. Boone North Carolina Cachet Maker	Vol. 19, No. 1, Spring 2000: 8-11
Robert Outlaw, 1929-2012	Vol. 31, No. 1, Winter 2012: 3
Rowan County – A Postal History	Vol. 34, No. 3, Summer 2015: 3-18
Salisbury, NC – A Postal History	Vol. 33, No. 4 (Fall 2014): 5-23
Setting the Record Straight [secession date of North Carolina]	Vol. 15, No. 1, Winter 1996: 12-13
Setting the Record Straight-er [NC, TN independent state periods]	Vol. 15, No. 2, Spring 1996: 12
Scott M. Troutman, 1950-2015	Vol. 34, No. 2, Spring 2015: 6
Siler City – A Postal History	Vol. 33, No. 3, Summer 2014: 16-17
Size Doesn’t Make Rarity – Flat Rock, NC	Vol. 20, No. 2, Summer 2001: 12-15

Smithfield, North Carolina: 200 Years of Postal History	Vol. 27, No. 4, Fall 2008: 11-15
Sneedsboro, Anson County, A Colorful Inland Port City	Vol. 14, No. 1, Winter 1995: 4-5
Springs of North Carolina, The	Vol. 27, No. 1, Winter 2008: 14-19
Stanly County, Nature's Wonders Driving the Local Economy	Vol. 24, No. 1, Winter 2004-05: 3-13
And Creating a Plentiful Postal History	
Star Shines Bright at the Center of North Carolina, A	Vol. 14, No. 4, Fall 1995: 9-15
[Star, N.C.]	
Tale of Two Cities, A: Fuquay Springs and Varina	Vol. 34, No. 2, Spring 2015: 9-17
There's More to Wake than Raleigh [Apex, Cary, Green Level,	Vol. 20, No. 4, Winter 2001-02: 3-5
Holly Springs, New Hill, Wake Forest College]	
Three Cent Confederate Rate?, A	Vol. 18, No. 3, Winter 2003: 9-10
UNC-Chapel Hill – A US Navy Pre-flight Training School	Vol. 37, No. 2, Spring 2018: 16-19
Unique Confederate States General Issue Cover, A [Largest	Vol. 16, No. 4, Winter 1997-98: 3
Known Multiple of #7, Wilmington]	
Uwharrie, Montgomery County	Vol. 35, No. 3, Summer 2016: 19
Valle Crucis, Watauga County's Valley of the Cross	Vol. 36, No. 2, Spring 2017: 15-19
Vernon S. Stroupe, Jr., 1927-2006 [pages from his collection]	Vol. 25, No. 3, Summer 2006*: 3-15
Way Mail of North Carolina	Vol. 21, No. 2, Summer 2002: 6-10
William Stevens Powell	Vol. 34, No. 3, Summer 2015: 18
Williamston, Martin County's Outstanding Post Office	Vol. 32, No. 2, Spring 2013: 16-19
Wilmington and Raleigh Railroad, The	Vol. 28, No. 1, Winter 2009: 11-15
Wilmington & Raleigh Rail Road, North Carolina's First	Vol. 35, No. 4, Fall 2016: 3-22
Chartered Railroad, The	
Wilmington Blockade Cover, A	Vol. 20, No. 2, Summer 2001: 10-12
Wilmington Seven Bar Killer on a Confederate Two-Cent Red	Vol. 11, No. 3, Summer 1992: 6
Jackson, The	
Winston-Salem Postmaster's Postmark	Vol. 23, No. 1, Spring 2004: 15
Women's Colleges in North Carolina, a Postal History	Vol. 36, No. 3, Summer 2017: 3-13
Wright Pylon Dedication	Vol. 22, No. 4, Winter 2003-04: 21
WWII Ration Stamps Preventing Chaos	Vol. 20, No. 1, Spring 2001: 5-8
Crumbley, Tony L.; McDowell, Harry L.	
That Other Murfreesboro College: Chowan	Vol. 20, No. 3, Fall 2001: 5-7
Crumbley, Tony L.; Stroupe, Vernon S.	
Postal History of Concord, A	Vol. 9, No. 4, Fall 1990: 3-8
Crumbley, Tony L.; Wetmore, Ruth Y.	
Robeson County, Resting Place of Virginia Dare?	Vol. 21, No. 1, Spring 2002: 13-14
Crumbley, Tony L.; Winter, Richard F.	
Pioneer North Carolina Machine Cancels	Vol. 31, No. 3, Summer 2012: 3-26
D'Alessandris, David	
Wilmington to Yarmouth, Nova Scotia	Vol. 33, No. 4, Fall 2014: 3-4
Doares, Robert F., Jr.	
North Carolina Civil War Post Office to Issue Anniversary Cover	Vol. 15, No. 2, Spring 1996: 13-14
[Raft Swamp postal history]	
Raft Swamp: North Carolina's Oldest Postal Building?	Vol. 8, No. 2, Summer 1989: 8-11
Editor/Editors	
Buyer Beware! [fake Greensboro Paid 10 patriotic]	Vol. 13, No. 4, Fall 1994: 11
Cary Holt Closes Albums, 1914-2003 [obituary]	Vol. 22, No. 4, Winter 2003-04: 20
Collector's Peek into the Past, A [1895 Prices	Vol. 21, No. 4, Winter 2002-03: 15
in Advertisement from Warren Plains]	
Colonial Rarities Surface	Vol. 20, No. 3, Fall 2001: 3-4
Confederate Post Office Listing	Vol. 36, No. 1, Winter 2016: 19
Correct Size for the Raleigh Type 3 [CDS]	Vol. 20, No. 3, Fall 2001: 3
Correction [Ralph E. Davis of Whiteville]	Vol. 33, No. 2, Spring 2014: 7

Cumulative Index to the NCPHS Newsletter and Postal Historian, 1982 – 1997
 Cumulative Index to the NCPHS Newsletter, 1982-1994 and Postal Historian, 1994-2001
 Dunn's Rock, N.C., Western N.C. During the Civil War
 Early Reconstruction Letter from Raleigh, An
 Founding Member, Jean Ballamy Caldwell, Closes Album 1926 - 2004
 From the Archives [Murfreesboro cover, Oct 28, 1808]
 From the Files [Quantities of Scott 1 and 2 Shipped, 1848-51]
 From the N.C. Archives [Mount Tirzah, 1796]
 Grimshawes [from unknown newspaper, July 9, 1944]
 Harris, James P., 1922-1996 [obituary]
 Harry Lee McDowell, 1917-2003 [obituary]
 Harter, William [notice of death]
 Hugh Finlay Journal, The [from Brooklyn Mercantile Library Association, 1867, reprinted by U. S. Philatelic Classics Society, 1975.]
 Horner & Horner School, Oxford, N.C.
 Humphrey-Williams-Smith House Wins National Preservation Award [Raft Swamp; from *Historic Preservation News*, 1991]
 In Memoriam – Perry M. Sapperstein [obituary]
 Is This Cancellation in Your Collection? [Hillsborough]
 Letter from the Past [Petersburg & Roanoke Rail Road, 1845]
 Letter from the Past, An 1835 Letter from Roanoke Island [Elizabeth City CDS]
 Letter from the Past, Education in Eastern North Carolina, 1829 [Pantego]
 Letter from the Past, Hard Times in Wilmington [1865]
 Letter from the Past, A Journey during the War of 1812
 Letter from the Past, Low Morale at War's End
 Letter from the Past, Moravian Salem in 1786
 Letter from the Past, The New Garden Quaker Community
 Meet Founding Member Rich Weiner
 Marking Up-Dates
 Milton G. Wicker [obituary]
 Newbern, North Carolina Roulettes [1851 issue]
 North Carolina Postal History Exhibit Opens
 Notice in the *North Carolina Gazette* – 1 Aug. 1797 [Newbern Post Office advertisement]
 Painting in North Carolina Museum of Art to Be Used on 1993 Christmas Stamp
 Postmaster Finder – Postal History Database Available To the Public
 Request for Postmark Information [Wheel of Fortune]
 Robert H. Hunt [1936-2002], Past NCPHS president and member of the Board of Directors [obituary]
 Rural Delivery Route No. 1, Pine Hall, Stokes Co., N.C.
 Salvo, State's Smallest Post Office, to Reopen?
 Scott, George [notice of death]
 Snow Camp, Not Snow Hill
 Those Davison College Illustrated Covers
 Village Post Offices

Vol. 15, No. 4, Winter 1997: 12-15
 Vol. 20, No. 4, Winter 2001-02: 14-19
 Vol. 7, No. 3, Summer 1988: 14
 Vol. 19, No. 3, Fall 2000: 14-15
 Vol. 24, No. 4, Fall 2005: 15
 Vol. 13, No. 4, Fall 1994: 16
 No. 2, Jul. 1982: 2
 Vol. 10, No. 3, Summer 1991*: 15
 No. 15 (Vol. 4, No. 4), Oct. 1985: 14
 Vol. 15, No. 2, Spring 1996: 2
 Vol. 22, No. 4, Winter 2003-04: 20
 Vol. 9, No. 4, Fall 1990: 2
 Vol. 9, No. 4, Fall 1990: 9-15
 Vol. 12, No. 3, Summer 1993: 15
 Vol. 10, No. 2, Spring 1991*: 12
 Vol. 16, No. 1, Spring 1997: 2
 Vol. 14, No. 1, Winter 1995: 16
 Vol. 7, No. 4, Fall 1988: 14
 Vol. 7, No. 1, Winter 1988: 20
 Vol. 6, No. 1, Winter 1987: 17-18
 Vol. 6, No. 3, Summer 1987: 16
 Vol. 6, No. 4, Fall 1987: 14
 Vol. 8, No. 1, Winter 1989: 20
 Vol. 6, No. 2, Spring 1987: 24
 Vol. 7, No. 2, Spring 1988: 16
 Vol. 28, No. 1, Winter 2009: 9
 Vol. 20, No. 3, Fall 2001: 2
 Vol. 8, No. 1, Winter 1989: 2
 Vol. 15, No. 1, Winter 1996: 10-11
 Vol. 18, No. 1, Summer 1999: 3-4
 Vol. 20, No. 3, Fall 2001: 9
 Vol. 11, No. 5, Winter 1992*: 15
 Vol. 20, No. 4, Winter 2001-02: 8
 Vol. 36, No. 2, Spring 2017: 7
 Vol. 21, No. 3, Fall 2002: 12
 Vol. 5, No. 1, Jan. 1986: 12
 Vol. 12, No. 4, Fall 1993*: 13
 Vol. 7, No. 1, Winter 1988: 19
 Vol. 24, No. 4, Fall 2005: 14
 Vol. 23, No. 3, Fall 2004: 15
 Vol. 33, No. 1, Winter 2013: 11

Ertzberger, Darrell R.

1899 Round the World Cover
County and Postmaster Cancels of North Carolina
First County-Wide RFD System in North Carolina, The:
Mecklenburg County
Forsyth County Covers 1841-1986
Free City Delivery in North Carolina
Pecan, Bladen County: An 18-Month Office
Postal History of Davie County, A
Silver, Stanly County, North Carolina

Vol. 34, No. 4, Fall 2014: 9-10
No. 15 (Vol. 4, No. 4), Oct. 1985: 3-13
Vol. 14, No. 1, Winter 1995: 8-11

Estus, Glenn

U.S. Postal Service, Official Sponsor of 1992 Olympic Games

Vol. 5, No. 2, Apr. 1986: 9-20
No. 13 (Vol. 4, No. 2), Apr. 1985: 3-6
Vol. 32, No. 4, Fall 2013
Vol. 5, No. 3, Apr. 1986: 3-13
No. 10 (Vol. 3, No. 3), Aug. 1984: 1-2

Fricke, Charles A.

Multifaceted Kawana, Mitchell County, Postmark, A

Vol. 16, No. 4, Winter 1997-98: 12-13
Vol. 11, No. 2, Spring 1992: 14-15

Gallico, Paul

Thinking Aloud [Attempt to Report Wright Brothers' First
Flight, from the Norfolk Landmark, ca. 1948]

Vol. 22, No. 3, Fall 2003: 13

Goerch, Carl

Many Tar Heel Postoffices Have Been Given Odd Names
[from *Washington Daily News*, ca. 1921-1931]

Vol. 9, No. 3, Summer 1990: 10-12

Green, Brian

Two New North Carolina Postal Markings Come to Light
[Abbotts Creek, Paid 3; Jamestown, Paid 1]

Vol. 9, No. 2, Spring 1990: 3

Green, Maria and Brian

White Road, N.C. Confederate Cover

Vol. 10, No. 2, Spring 1991*: 13

Griffin, Flora G.

Tales of the Mail Route Days of Luther S. Griffin
[Unionville Rural Route 2]

Vol. 7, No. 1, Winter 1988: 13-14

Hall, Charles F., Jr.

Bayonets and Rails for the Confederacy: The Jonathon McGee
Heck Story
Forced March to Fayetteville, A
Great War in Raleigh, The
History of Cherry Point Marine Corps Air Station, The
North Carolina in the Great War 1914-1918
Overhills, Another Fort Bragg Post Office
Postal History of Camp Lejeune Marine Corps Base, The
Postal History of Columbus County, The
Postal History of the Fayetteville Arsenal and Armory, The
Postal History of Fort Bragg, The
Postal History of Wilkes County, The
Western Railroad, A Postal Perspective 1852 to 1879, The

Vol. 31, No. 2, Spring 2012: 2-10
Vol. 32, No. 2, Spring 2013: 6-13
Vol. 32, No. 4, Fall 2013: 9-11
Vol. 36, No. 4, Fall 2017: 3-12
Vol. 37, No. 4, Fall 2018: 3-17
Vol. 30, No. 4, Fall 2011: 3-9
Vol. 35, No. 1, Winter 2015: 3-14
Vol. 33, No. 1, Winter 2013: 12 - 13
Vol. 28, No. 3, Summer 2009: 9-14
Vol. 29, No. 3, Summer 2010: 3-14
Vol. 32, No. 1, Winter 2012: 4-11
Vol. 33, No. 3, Summer 2014: 3-11

Harrison, Galen

Salisbury Prison - December 1861 - April 1865

Vol. 19, No. 3, Fall 2000: 7-13

Harter, William & Marian

A History of the Spencer Post Office

Vol. 6, No. 3, Summer 1987: 13-15

Hecht, Arthur

Postal History of North Carolina, 1789-1795, Part I [from the
North Carolina Historical Review, Vol. 35, No. 2, 1958: 125-152]
Postal History of North Carolina, 1789-1795, Part II [ibid.]

Vol. 8, No. 1, Winter 1989: 12-19
Vol. 8, No. 3, Fall 1989, 4-12

Hensley, Tim

All Aboard for the Virginia Creeper [Norfolk & Western in
Ashe County, from book *Steam, Steel & Stars: America's Last
Steam Railroad*]

Vol. 15, No. 3, Summer 1996: 5-7

Herring, Harriett

Cacheted Envelope Issued in Swansboro

Vol. 6, No. 2, Spring 1987: 23

Holt, W. Clary

1863 Refugee Banking in Company Shops

Vol. 20, No. 1, Spring 2001: 3-4

College Covers, University of North Carolina

Vol. 17, No. 4, Winter 1999: 3-11

Money Problem, A [Chapel Hill provisional Paid 5]

Vol. 21, No. 1, Spring 2002: 15

Refusing to Shake Hands – Near the Courthouse in Graham

Vol. 20, No. 3, Fall 2001: 7-9

[Christian Conference Correspondence]

Story of a Turned Cover, The [Raleigh, Saxapahaw

Vol. 21, No. 4, Winter 2002-03: 7-8

to Clover Orchard]

Homesly, Greg

Confederate Cover Addressed to Swann's Station

Vol. 11, No. 4, Fall 1992*: 14-15

Siler City Pseudo Machine Postmark, The: A North Carolina

Vol. 12, No. 4, Fall 1993*: 7

Rarity

Wilmington & Fayetteville River Route Marking

Vol. 10, No. 4, Fall 1991: 19

Hulme, Wilson

New Bern Roulettes, A Request for Information

Vol. 15, No. 1, Winter 1996: 10

Jackson, Steve

Letter to the Editor [Bertie County]

Vol. 33, No. 3, Summer 2014: 18-19

Jaronski, Stefan T.

Contemporary Accounts of the Union Occupation Post

No. 12 (Vol. 4, No. 1), Jan. 1985: 1-2

Office at New Berne, North Carolina

Mail from Camp Stokes CSA in 1864-1865

Vol. 34, No. 2, Spring 2015: 7-8

Mail from Roanoke Island in the Civil War

No. 13 (Vol. 4, No. 2), Apr. 1985: 7-9

Mail Service for the Confederate Army on the Hatteras Coast

Vol. 37, No. 2, Spring 2018: 3-15

1861 - 1862

Military Mail from Roanoke Island, Revisited

Vol. 33, No. 2, Spring 2014: 3-6

New Confederate Semi-Official Cover from North Carolina, A

Vol. 37, No. 2, Winter 2018: 18-19

Postal Service for the Confederate Defenders of Roanoke

Vol. 7, No. 3, Summer 1988: 10-12

Island

Postal Services during Initial Occupation of New Berne,

No. 12 (Vol. 4, No. 1), Jan. 1985: 3-4

North Carolina

Johnston, Hugh Buckner, Ed.

Journal of Ebenezer Hazard in North Carolina, 1777 and

Vol. 10, No. 1, Winter 1991: 4-13

1778, The [from the *North Carolina Historical Review*, Vol. 36,

No. 3, 1959: 358-381]

Jordan, Jimmy

Missent to Wilmington

Vol. 34, No. 3, Summer 2015: 19

Justesen, Ben

African American Postmasters in North Carolina, 1874-1909

Vol. 25, No. 2, Spring 2006: 3-11

Lasley, W. T.

First Rural Delivery in North Carolina Began at China

No. 13 (Vol. 4, No. 2), Apr. 1985, 1-3

Grove, The

Leland, Elizabeth

Petite Post Office Makes 'Em Proud [Salvo, from the *Charlotte*

Vol. 7, No. 4, Fall 1988: 12-13

Observer, July 25, 1988]

Lera, Thomas

Cave Post Offices of North Carolina, The

Vol. 37, No. 4, Fall 2018: 18-23

Lohr, Lawrence L.

Adding a New Frame-Line to the List [Concord – Mt. Pleasant]

Vol. 25, No. 1, Winter 2005-06: 8

Fort Defiance, NC, and the Lenoir Family: Postal Operations

Vol. 29, No. 4: Fall 2010: 3-10

and Correspondence

Post-Civil War Correspondence of the Lenoir Family of Fort Defiance, North Carolina, The Lupton, David W. Hog Island and Lupton, North Carolina	Vol. 11, No. 2, Spring 1992: 3-7
Mandel, Frank Identification of Postmark Types Produced from Handstamps Made by Edmond S. Zevely, 1850-1861 [from <i>The Congress Book</i> , 1987]	Vol. 15, No. 4, Winter 1997: 9-10
Mattox, Doug Site Survey of the Wendell Post Office Submitted	Vol. 10, No. 3, Summer 1991*: 3-9
Mayes, Helen V.; Troutman, Scott Oxford, Granville County, Its Nineteenth Century Postal History	Vol. 11, No. 5, Winter 1992*: 13
McClung, Michael C. Union Occupation Mail from Eastern North Carolina during the Civil War, Part I	Vol. 12, No. 3, Summer 1993: 3-14
McDowell, Harry L. Scotland Neck Postmarks, 1797-1900 Mount Tirzah, An 18th Century Post Office	Vol. 32, No. 3, Summer 2013: 3-9
McRee, Timothy M. North Carolina Hunting and Fishing Stamp Update, 1988-1991 North Carolina Hunting and Fishing Stamps North Carolina Hunting and Fishing Stamps, 1986-87 and 1987-88	Vol. 7, No. 4, Fall 1988: 3-8 Vol. 18, No. 1, Summer 1991: 11-13
Miller, James R. Philatelic Genealogy: Old Envelopes and Post Cards Can Locate an Immigrant's Birthplace and Illustrate an Ancestor's Military Service	Vol. 11, No. 5, Winter 1992*: 8-12 Vol. 6, No. 4, Fall 1987: 6-9 Vol. 9, No. 2, Spring 1990: 8-11
Monroe, James L. D. Commodore Samuel Barron, CS Navy Confederate States Blockade Mourning Cover with Frameline Unique Independent Statehood Cover, A	Vol. 30, No. 2, Spring 2011: 18-19
Nelson, Frank J. Camp Hoffman: Where Did It Go? Fallstown, Iredell County	Vol. 29, No. 2, Spring 2010: 12-13 Vol. 21, No. 4, Winter 2002-03: 11 Vol. 21, No. 4, Winter 2002-03: 12
O'Sullivan, Thomas J. North Carolina's Pioneer Air Mail: Wilmington, 1912 [from <i>The Pioneer Airplane Mails of the United States</i> , published by the American Air Mail Society, 1985.]	Vol. 18, No. 2, Fall 1999: 12-13 Vol. 18, No. 2, Fall 1999: 15
Otterbourg, Ken Coal-Mining Disaster of '25 was N.C.'s Worst [from the <i>Winston-Salem Journal</i>]	Vol. 5, No. 4, Oct. 1986: 3-5
Pacetti, Stephen B. Leeds Patent Envelope, The: An Unusual Use	Vol. 13, No. 2, Spring 1994: 3-8
Parris, John Marion Jones Unearths Dillsboro Postal History [from <i>The Asheville Citizen-Times</i> , Aug. 30, 1987]	Vol. 31, No. 1. Winter 2011: 3-5
Perkinson, Phil Pearl Diving in the Warren County Landfill [Axtell cover and matched enclosure] Postal History of Vance County Postal Operations in Vance County	Vol. 6, No. 4, Fall 1987: 11-12
Perkinson, Phil; Crumbley, Tony L. Raleigh Bayonet Factory, The	Vol. 18, No. 3, Winter 2000: 11 Vol. 20, No. 4, Winter 2001-02: 9-11 No. 7 (Vol. 2, No. 4) Nov. 1983: 2-5
	Vol. 21, No. 1, Spring 2002: 11-12

Postlewait, Dilmond D.

Precancels in North Carolina

Vol. 8, No. 2, Summer 1989: 5-7

Richardson, Thomas S.

1847 Issue in North Carolina, The

Vol. 16, No. 3, Fall 1997: 3-10

1869 Update, An

Vol. 26, No. 4, Fall 2007: 12-13

Greensboro PAID Handstamp Revisited, The

Vol. 34, No. 2, Spring 2015: 1-5

Greensborough PAID Handstamp, The

Vol. 30, No. 3, Summer 2011: 3-8

Search for Leo, The

Vol. 8, No. 2, Summer 1989: 3

Update of North Carolina Covers with the 1869-Issue Stamps

Vol. 34, No. 4, Fall 2015: 15-23

Richardson, Thomas S.; Schoolmeester, Kenneth

Quantities of the 1c, 3c, and 12c Issues Delivered to

Vol. 9, No. 3, Summer 1990: 3-5

North Carolina in July 1851

Roughton, Jerry R.

Duncan MacRae, Postmaster of Fayetteville

Vol. 25, No. 1, Winter 2005-06: 10-11

Medical Remedies for Man's Ailments

Vol. 20, No. 4, Winter 2001-02: 6-8

Natural Wells Post Office, 1892-1903

Vol. 16, No. 2, Summer 1997: 5

Rupert, Art; McCord, Davie R.

North Carolina Rural Stations

Vol. 16, No. 2, Summer 1997: 6-12

North Carolina Rural Station Update

Vol. 16, No. 3, Fall 1997: 14-15

Sanford, Robert L.

Old Covers Made Good Note Pads

Vol. 12, No. 2, Spring 1993: 11

Scheuer, Henry B.

Kennedy First Day Covers

Vol. 11, No. 3, Summer 1992: 14-15

Schoolmeester, Ken

James C. Johnston, Esq.

Vol. 6, No. 1, Winter 1987: 10-11

North Carolina Fancy Cancels

Vol. 8, No. 1, Winter 1989: 3-9

North Carolina Octagonal Postmarks

Vol. 6, No. 4, Fall 1987: 3-5

Old Post Offices Never Die... [Jarvisburg, Grandy, Hertford]

Vol. 5, No. 4, Oct. 1986: 14-16

Scott, Bob

Nation's Smallest Post Office Will Be No More [from

Vol. 5, No. 3, Jul. 1986: 14

The Asheville Citizen, March 7, 1986]

Seward, Scott

1937 Convention of the Society of Philatelic Americans

Vol. 31, No. 4, Fall 2012: 3-9

and the First Day Issue of Scott No. 797, The

Postal History of Tourism in Western North Carolina, A

Vol. 30, No. 1, Winter 2010: 3-9

Survey of Auxiliary Markings in North Carolina, A

Vol. 35, No. 2, Spring 2016: 3-12

Western North Carolina Space Covers

Vol. 34, No. 1, Winter 2014: 3-7

Sharpe, Bill

From *The State* magazine, Sept 15, 1968 ["from From Murphy

Vol. 10, No. 2, Spring 1991*: 7]

to Manteo," Sell Out, p. 19; Mashoes]

Sherrill, Betty

Old Post Office Not Forgotten, Puella Post Office One of

Vol. 14, No. 1, Winter 1995: 14-15

40 Sites for Rural Mail Delivery [from *The Asheville*

Citizen-Times, 24 Jan. 1990]

Slaton, George

Black River Chapel Post Office

Vol. 36, No. 1, Winter 2016: 3-6

Huntsville, Gateway to the Southern Piedmont

Vol. 37, No. 1, Winter 2018: 3-13

New Sterling, The Third Creek Settlement in Iredell County

Vol. 36, No. 2, Spring 2017: 11-14

Sparks, Howard J.

Postal History on a Shoestring [Greensboro, mid-1980s]

Vol. 6, No. 2, Spring 1987: 21-22

Stanton, Thomas E.

Reopening North Carolina Post Offices, 1865-70

Vol. 6, No. 3, Summer 1987: 3-11

Stets, Robert J.

Confederate Post Office Department Letters
More about Oxford, Granville County, N.C.
Postal History of North Carolina, 1789-1795, An Epilogue
Post Cards Tell the Story
Those "Unofficial" Self-Inking Postmarkers
Why Were There Two Postmasters at Greensboro in 1811?

Stout, Garland

More on Spencer Postal History

Stroupe, Vernon S.

Book Review: *North Carolina Petitions for Presidential Pardons, 1865-67*:
by Russell S. Koonts
Buyer Beware [Fake Greensboro Confederate Cover]
Covers are Seldom What They seem [Halifax, Oaks]
Edenton Straight-Line Post Mark Better Defined
Errors in "Postal History - The Basics"
First Federally Appointed Woman Postmaster, The
First North Carolina Post Office Site Survey Submitted
From the Archives, A Manuscript Circular Date Stamp [Murphy]
From the Archives (Murfreesboro)
Gold Nuggets from the N.C. State Archives
Marking Update [Hillsborough]
More DPO's in the Making [Candidates near Charlotte]
New Asheville Marking, Type 3.5, A
New Berne, Mr. Typographer, Not Newbern
New Discovery, A [Hotel, N.C., fancy cancel, 1857]
New Find, A [Fayetteville paid in oval sunburst, 1822, 1824]
New Raleigh Post Mark Identified – Type 18.5
Philatelic Treasures from the State Archives
Postal History - The Basics
Postmarks or Cinderellas?
Raft Swamp Challenge, The
Slow Mail on the Raleigh & Gaston Railroad
Time Warp at Raft Swamp, A
Twenty-Fifth Anniversary of the Wright Brothers' Flight, The
Two Different Salem Postmarks [1852-60 and 1861-1865]
Visiting Columbus [OH], A Really Good Stamp Show

Stroupe, Vernon S.; Crumbley, Tony L.

Postal History of Asheville

Tilles, Harvey

Highway Post Offices of North Carolina, The
Manuscript Postal Markings from North Carolina
North Carolina Statehood Bicentennial Cancels
Post Roads into North Carolina (Excerpts from the 1820
Postal Manual)

Troutman, Scott

Abshers, Dockery and Joynes, Wilkes County, N.C.
Additional Pamlico County Markings
Atlantic, Tennessee & Ohio Cover
Belvidere, Perquimans County
Carolina Central Railroad, The
Confederate Letter after the Battle of Roanoke Island
Cover from Centreville, N. C. to General Matt Ransom, A

Vol. 16, No. 1, Spring 1997: 7
Vol. 12, No. 4, Fall 1993*: 3-4
Vol. 8, No. 3, Fall 1989: 12-14
Vol. 15, No. 4, Winter 1997: 3-4
Vol. 7, No. 2, Spring 1988: 3-6
Vol. 14, No. 1, Winter 1995: 6

Vol. 6, No. 4, Fall 1987: 12

Vol. 15, No. 1, Winter 1995: 2

Vol. 13, No. 4, Fall 1994: 11
Vol. 19, No. 1, Spring 2000: 12-13
Vol. 11, No. 5, Winter 1992-93*: 14
Vol. 14, No. 3, Summer 1995: 14
Vol. 25, No. 1, Winter 2005-06: 13
Vol. 9, No. 3, Summer 1990: 7-9
Vol. 12, No. 4, Fall 1993*: 12
Vol. 13, No. 3, Fall 1994: 16
Vol. 7, No. 4, Fall 1988: 10-12
Vol. 14, No. 2, Spring 1995: 16
Vol. 23, No. 1, Spring 2004: 10
Vol. 24, No. 4, Fall 2005: 9
Vol. 13, No. 4, Fall 1994: 5
Vol. 7, No. 2, Spring 1988: 10
No. 13 (Vol. 4, No. 2), Apr. 1985: 9-10
Vol. 25, No. 1, Winter 2005-06: 12-13
Vol. 6, No. 1, Winter 1987: 12-14
Vol. 14, No. 2, Spring 1995: 8-14
Vol. 15, No. 3, Summer 1996: 10-11
Vol. 8, No. 2, Summer 1989: 12
Vol. 6, No. 4, Fall 1987: 10
Vol. 8, No. 2, Summer 1989: 11
Vol. 22, No. 3, Fall 2003: 3-4
Vol. 7, No. 1, Winter 1988: 19
Vol. 22, No. 3, Fall 2003: 2

Vol. 24, No. 4, Fall 2005: 3-8

No. 7 (Vol. 3, No. 1), Feb. 1984*: 1-3
Vol. 5, No. 3, Jul. 1986: 17
Vol. 26, No. 3, Summer 2007: 8-12
No. 10 (Vol. 3, No. 3), Aug. 1984: 5-6

Vol. 11, No. 3, Summer 1992: 11-13
Vol. 23, No. 2, Summer 2004: 10-11
Vol. 26, No. 3, Summer 2007: 13
Vol. 16, No. 4, Winter 1997-98: 15
Vol. 31, No. 4, Fall 2012: 10-12
Vol. 25, No. 4, Fall 2006: 10-13
Vol. 32, No. 3, Summer 2013: 10-11

Curler – Transportation to Nags Head, The
 Durants of Durant's Neck – Perquimans County, The
 Duck
 Early Invitation from Sandy Mush, An
 Englehard, Hyde County
 Envelope from Cobb's, An
 Fast Freight from Baltimore [through Wilmington by Steamer]
 Fort Johnston, Brunswick County
 Fourth Railroad over the Blue Ridge, The
 Galax for Sale in Low Gap, NC
 Goldsboro & Morehead City Agent Marking
 Hertford, North Carolina
 History (Postal and Otherwise) of the Towns (Houck,
 Mortimer, Akako, and Edgemont) along Wilson Creek Gorge,
 Caldwell County, N.C., A
 Individual Railroad Clerk Markings
 Jerusalem, N.C.
 Kitty Hawk, Derivation of the Name
 Lake Landing, Hyde County
 Lenoir and Lancaster Railroad Post Office
 Letters from the 6th New Hampshire
 Letter from the Past, A Union Soldier at Fort Fisher, N.C., A
 Letter from the Tweetsie, A
 Letters from the Phebe
 Little on Meat Camp, North Carolina, A
 Look at the Lightship Service in North Carolina, A
 Mamie, Currituck County
 Margarettsville, N. C. Cover, A
 Mining Town of Ore Knob, Ashe County, The
 New Lebanon and South Mills – Camden County
 New Railway Post Office Cancel Found [Wilm. & Ruth. R.P.O.]
 North Carolina Liquor Permits
 North Carolina Postal History from the Robert J. Karrer Collection
 North Carolina Sales Tax Coupons
 North Carolina Sprayed-on Postmarks
 North Carolina's First Rural Mail Carrier
 North Carolina's Smallest Post Office a Victim of Arson [Salvo]
 Notes on the Last "Letter from the Past" [Roanoke Island, 1835]
 Mining Town of Ore Knob, Ashe County, The
 Old Mica Mine Cover [Soda Creek, Gap Creek]
 Pantego to Tuscarora – Two Remarkable R.P.O. Covers
 Personal Contents of the Allen Letters, A glimpse into Life at
 Tally Ho, The
 Plymouth, N.C. Find
 Portsmouth Cover, A
 Postmaster Alters History at Kill Devil Hills, A
 Pre-Civil War Railroads of North Carolina, Their Histories
 and Postal Markings
 Relook at St. Lewis, N.C., A
 Rise and Fall of Camp Davis, The
 Shipyard [Camden County]
 Sinful Doings in Stokes County [1862]
 Sneads Ferry, Onslow County

Vol. 29, No. 2: Spring 2010: 7-10
 Vol. 26, No. 3, Summer 2007: 7
 Vol. 21, No. 4, Winter 2002-03: 13-14
 Vol. 20, No. 3, Fall 2001: 12
 Vol. 13, No. 4, Fall 1994: 6-7
 Vol. 23, No. 3, Fall 2004: 13-14
 Vol. 25, No. 1, Winter 2005-06: 9
 Vol. 24, No. 3, Summer 2005: 11-12
 Vol. 15, No. 2, Spring 1996: 5-7
 Vol. 26, No. 4, Fall 2007: 11
 Vol. 26, No. 4, Fall 2007: 14-15
 Vol. 30, No. 1, Winter 2010: 17-19
 Vol. 11, No. 5, Winter 1992*: 3-7

 Vol. 20, No. 3, Fall 2001: 13-14
 Vol. 7, No. 2, Spring 1988: 11-12
 Vol. 22, No. 3, Fall 2003: 4
 Vol. 14, No. 1, Winter 1995:12-13
 Vol. 24, No. 3, Fall 2005: 10-11
 Vol. 7, No. 1, Winter 1988: 15-18
 Vol. 10, No. 3, Summer 1991*: 10-11
 Vol. 15, No. 2, Spring 1996: 15
 Vol. 17, No. 3, Fall 1998: 6-9
 Vol. 30, No. 4, Fall 2011: 18-19
 Vol. 10, No. 1, Winter 1991: 3-4
 Vol. 19, No. 1, Spring 2000: 15
 Vol. 10, No. 3, Summer 1991*: 10
 Vol. 18, No. 2, Fall 1999: 14
 Vol. 23, No. 1, Spring 2004: 11-13
 Vol. 14, No. 4, Fall 1995: 15
 Vol. 32, No. 2, Spring 2013: 5
 Vol. 34, No. 2, Spring 2015: 18-19
 Vol. 25, No. 2, Spring 2006: 12-13
 Vol. 12, No. 2, Spring 1993: 12-13
 Vol. 16, No. 2, Summer 1997: 4
 Vol. 12, No. 2, Spring 1993: 15
 Vol. 7, No. 2, Spring 1988: 15
 Vol. 18, No. 2, Fall 1999: 14
 Vol. 16, No. 4, Winter 1997-98: 14
 Vol. 18, No. 3, Winter 2000: 7
 Vol. 11, No. 2, Spring 1992: 13

 Vol. 25, No. 4, Fall 2006: 14
 Vol. 25, No. 1, Winter 2005-06: 8-9
 Vol. 22, No. 3, Fall 2003: 5-10
 Vol. 10, No. 4, Fall 1991: 3-18

 Vol. 25, No. 4, Fall 2006: 3
 Vol. 11, No. 5, Winter 1992*: 14-15
 Vol. 25, No. 1, Winter 2005-06: 12
 Vol. 7, No. 3, Summer 1988: 13
 Vol. 28, No. 4, Fall 2009: 12-13

Sodom, Madison County	Vol. 15, No. 3, Summer 1996: 9
Some Early Mt. Gilead History	Vol. 15, No. 4, Winter 1997: 11
Stampless Cover from Hoylesville, N.C., A	Vol. 12, No. 2, Spring 1993: 14
Straits, Gloucester and Marshallberg	Vol. 15, No. 1, Winter 1996: 14-15
Swan Quarter, Hyde County	Vol. 13, No. 4, Fall 1994: 9-11
Swansboro, Onslow County	Vol. 25, No. 4, Fall 2006: 8-9
Tale of Two Lost Cities, Diamond City and Dymond City	Vol. 23, No. 1, Spring 2004: 14
Tally Ho, The Town and Postal History of Tally Ho, North Carolina	Vol. 11, No. 2, Spring 1992: 11-13
Top Hits of 1846, The [Nags Head via Edenton to New York]	Vol. 25, No. 2, Spring 2006: 14-15
Two Interesting Railroad Cancellations	Vol. 31, No. 1, Winter 2011: 15-16
Two New North Carolina Fancy Cancels [Ridgeway, Washington]	Vol. 13, No. 3, Summer 1994: 15
Wanchese, Roanoke Island, Dare County	Vol. 26, No. 4, Fall 2007: 8-10
Waterlily, Currituck County	Vol. 15, No. 3, Summer 1996: 8-9
Weather Report Postal Card, A	Vol. 29, No. 3, Summer 2010: 15
Wiles, Wilkes County, N.C.	Vol. 11, No. 3, Summer 1992: 3-4
Wilson & Fayetteville R.P.O.	Vol. 30, No. 2, Spring 2011: 9
Wilmington & Manchester Rail Road Cover	Vol. 24, No. 3, Summer 2005: 13
Wilmington, Charlotte & Rutherford Rail Road Cover	Vol. 16, No. 1, Spring 1997: 13-14
Wilson & Fayetteville Railroad Post Office	Vol. 23, No. 2, Summer 2004: 15
Winfall, N.C.	Vol. 30, No. 2, Spring 2011: 10-11
Zouaves in North Carolina, The	Vol. 24, No. 2, Spring 2005: 3-4
Troutman, Scott and Amy	
Scott and Amy vs. the Light House, N. C. Cover	Vol. 9, No. 2, Spring 1990: 4-6
St. Lewis, N.C.	Vol. 9, No. 3, Summer 1990: 6-7
Victim of Fraud [Greensboro, UX5, 1880]	Vol. 10, No. 1, Winter 1991: 13
Troutman, Scott; Crumbley, Tony L.	
Mt. Gilead – Montgomery County	Vol. 17, No. 1, Spring 1998: 5-8
One Place through Time – Pierces Forge, Bairds Forge, Lovelady,	Vol. 15, No. 4, Winter 1997: 4-8
Granite and Granite Falls – Caldwell County	
Troutman, Scott; Mayes, Helen V.	
Horner's School, Oxford, N.C.	Vol. 12, No. 4, Fall 1993*: 5-6
Troutman, Scott; Tilles, Harvey	
Self-Opening Envelopes	Vol. 29, No. 2, Spring 2010: 3-6
Venable, Marion	
New Document on Our Most Famous Citizens, A	Vol. 17, No. 2, Summer 1998: 12-13
[Siamese Twins Chang and Eng Bunker, Surry County]	
Vestal, Alan	
Cana, Davie County, N.C.	Vol. 12, No. 4, Fall 1993*: 15
Carolina Female College	Vol. 8, No. 3, Fall 1989: 3
Dr. John F. Shaffner, Confederate Surgeon	Vol. 10, No. 3, Summer 1991*: 12-14
Wally, Darryl	
Postal Markings of Mecklenburg County, North Carolina, The	No. 14 (Vol. 4, No. 3), Jun. 1985: 2-18
Walske, Steven C.	
Blockade Run Mail Which Entered via North Carolina	Vol. 24, No. 3, Summer 2005: 3-7
Warren, Daniel C.	
Confederate North Carolina Trans-Mississippi Express Cover, A	Vol. 17, No. 3, Fall 1998: 10
Confederate States Two Cent Green Covers from North Carolina	Vol. 17, No. 2, Summer 1998: 14-15
Warren, Daniel C.; Crumbley, Tony L.	
20 Cent Green Confederate Stamp Used from North Carolina, The	Vol. 17, No. 1, Spring 1998: 12-15
Weiner, Richard D.	
Early Days of Davidson College: A Student Writes Home	Vol. 21, No. 3, Fall 2002: 11-13
Teacher Travels to NC – 1835, A	Vol. 28, No. 2, Spring 2009: 9-10

Wetmore, Ruth Y.

North Carolina Post Office Names with Indian Connections
Transylvania County Post Offices and Officials

Vol. 11, No. 4, Fall 1992*: 3-13
Vol. 9, No. 1, Winter 1990: 3-14

Wetmore, Ruth; Crumbley, Tony L.

Virginia Dare, North Carolina's First "First Day of Issue"
August 18, 1937

Vol. 30, No. 2, Spring 2011: 3-8

White, Jo Linn

Confederate Prison at Salisbury, The [from
Rowan County Register]

Vol. 19, No. 3, Fall 2000: 3

Wicker, Milton G.

Doane Cancel Additions and Corrections
Doane Cancellation Update
Doane Numeral Handstamp Cancels of North Carolina
First Rural Free Delivery Route in North Carolina
Flag Cancellation
Quaker Postmarks of North Carolina
Updated Listing of North Carolina Doane Cancels, An

Vol. 7, No. 2, Spring 1988: 13-15
No. 8 (Vol. 3, No. 1), Feb. 1984: 5-6
No. 6 (Vol. 2, No. 3), Aug. 1983: 2-6
No. 13 (Vol. 4, No. 2), Apr. 1985: 1
No. 9 (Vol. 3, No. 2), Apr. 1984: 3-7
No. 10 (Vol. 3, No. 3), Aug. 1984: 2-5
Vol. 5, No. 1, Jan. 1986: 3-10

Wicker, Milton; Tilles, Harvey; Schoolmeester, Ken

Postal Markings of Greensboro, N.C.

Vol. 6, No. 2, Spring 1987: 3-19

Wickert, W. M.

Dismal Swamp Canal Mail – A Mystery

Vol. 7, No. 2, Spring 1988: 7-10

Wiley, Mary C.

Twin City Postal System Began in Salem in 1792 [from *Twin City Sentinel*, May 4, 1953]

Vol. 5, No. 2, Apr. 1986: 7-8

Williams, L. N.

N. C. Uniquity is Worth \$30,000 [Franklin, N.C. Postmaster
Provisional, from *Stamp Collector*, Apr. 25, 1992]

Vol. 11, No. 3, Summer 1992: 10

Winter, Richard F.

58th North Carolina Troops in Eastern Tennessee, The
Asheboro to Cornwall, England
Beautiful North Carolina Confederate Covers — All Fake!
Charleston, S.C. to Belgium via Wilmington & Raleigh Railroad
Courthouse and Post Office Mysteries, #1 [Snow Hill]
Courthouse and Post Office Mysteries, #2 [Scuppernon]
Cowansville to Germany
Early Columbia Machine Cancels of Charlotte
Edgeworth Female Seminary
Elmwood Post Office Postmark Book
Enfield to Paris
England to Wilmington
First Post Road into Hyde County, The
Franklinville to Paris, France
Hot Springs, North Carolina – A World War I Internment Camp
Leo Postmark Update
Marge Pfund Memorial Postmark Museum, The
Mill Grove to Brackenheim, Württemberg
More on Edgeworth Female Seminary
"New Asheville Marking – Type 3.5" – Revisited
New North Carolina Postmark Catalog
New Railway Post Office (R.P.O.) Marking Discovered
New SHIP Marking of Plymouth
New York Ship Letter to Wilmington, N.C.
North Carolina Postal History Project Underway [State Archives]

Vol. 36, No. 3, Summer 2017: 14-17
Vol. 34, No. 4, Fall 2015: 9-10
Vol. 21, No. 1, Spring 2002: 3-6
Vol. 16, No. 1, Spring 1997: 5-7
Vol. 24, No. 1, Winter 2004-05: 14
Vol. 24, No. 1, Winter 2004-5: 15
Vol. 17, No. 1, Spring 1998: 10-11
Vol. 32, No. 2, Spring 2013: 14-15
Vol. 34, No. 1, Winter 2014: 8-12
Vol. 26, No. 2, Spring 2007: 12-14
Vol. 30, No. 2, Spring 2011: 12-13
Vol. 17, No. 3, Fall 1998: 11-13
Vol. 21, No. 2, Summer 2002: 11-15
Vol. 29, No. 4, Fall 2010: 18-19
Vol. 27, No. 1, Winter 2008: 4-13
Vol. 28, No. 4, Fall 2009: 13-14
Vol. 27, No. 3, Summer 2008: 14-15
Vol. 32, No. 3, Summer 2013: 11-12
Vol. 35, No. 1, Winter 2015: 15-17
Vol. 26, No. 2, Spring 2007: 15
Vol. 26, No. 1, Winter 2006-07: 12-13
Vol. 31, No. 4, Fall 2012: 14-15
Vol. 26, No. 3, Summer 2007: 14-15
Vol. 36, No. 1, Winter 2016: 14-18
Vol. 23, no. 2, Summer 2004: 12

Passed Midshipman Samuel P. Carter
 Pittsboro Outgoing Ship Letter
 Pre-1800 North Carolina Postmarks
 Prussian Closed Mail from North Carolina
 Raleigh & Gibson's Station Railroad
 Raleigh to Heidelberg, Baden
 Ridgeway to London
 Rocky Mount to Paris
 Rocky Mount to Paris
 Salisbury to Houston, Republic of Texas
 Salisbury to Leipzig, Saxony
 Siskin North Carolina Covers at Auction [Colonial, Early U.S.]
 Solution to Scuppernong Mystery
 Some Interesting Ship Covers
 Status of the Postmark Catalogs
 Steamship 20 Cent Cover Re-directed from Swansboro
 The William Hooper Letter
 Twice-Forwarded Cover, A
 U. S. Naval Lyceum and Midshipman Archibald MacRae
 U. S. Postal Bulletins on a New Web Site
 Wilmington to London
 Wilmington Not Williamston
 Wilmington to Paris, France
 Wilmington & Raleigh Railroad Steamboats

Worrell, W. Marvin, Jr.

Post Offices of Maney's Neck Township, Hertford County, The

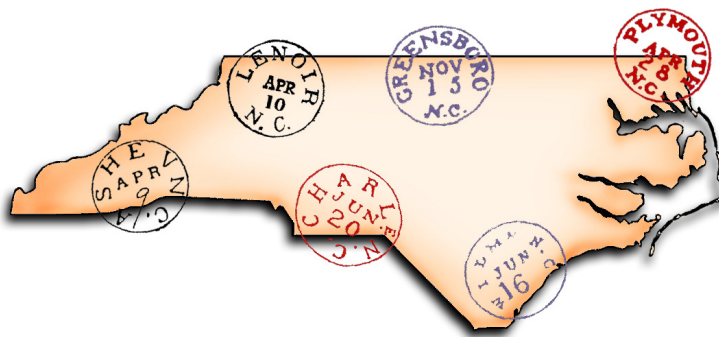
Zampelas, Pete

Davidson River Post Office and Train Station are Remembered
 [from *Transylvania Times*, Nov. 7, 1988]

Vol. 30, No. 3, Summer 2011: 18-19
 Vol. 36, No. 4, Fall 2017: 14-17
 Vol. 24, No. 2, Spring 2005: 7-11
 Vol. 31, No. 2, Spring 2012: 17-19
 Vol. 35, No. 4, Fall 2016
 Vol. 29, No. 2, Spring 2010: 14-15
 Vol. 16, No. 3, Fall 1997: 11-13
 Vol. 18, No. 1, Summer 1999: 4-6
 Vol. 31, No. 1: 18-19
 Vol. 18, No.3, Winter 2000: 5-6
 Vol. 24, No. 2, Spring 2005: 5-6
 Vol. 25, No. 1, Winter 2005-06: 14
 Vol. 24, No. 2, Spring 2005: 12-13
 Vol. 32, No. 4, Fall 2013: 16-19
 Vol. 35, No. 2, Spring 2016: 19
 Vol. 26, No. 1, Winter 2006-07: 6-11
 Vol. 21, No. 2, Summer 2002: 3-5
 Vol. 37, No. 3, Summer 2018: 26-27
 Vol. 30, No. 4, Fall 2011: 17
 Vol. 32, No. 1, Winter 2012: 17-19
 Vol. 16, No. 4, Winter 1997-98: 3-5
 Vol. 33, No. 2, Spring 2014: 18-19
 Vol. 16, No. 2, Summer 1997: 13-15
 Vol. 23, No. 3, Fall 2004: 9-13

Vol. 5, No. 4, Oct. 1986: 7-9

Vol. 8, No. 1, Winter 1989: 10-11



North Carolina Postal History Society
 P.O. Box 681447
 Charlotte, NC 28216

Subject Index

By Maurice M. Bursey

North Carolina Postal History Society Newsletter (Issues 1-15)

NCPHS Newsletter (Issues 16-49, Volume 5, No. 1 – Volume 13, No. 2)

North Carolina Postal Historian, Issues 50 – 144, Volume 13, No. 3 - Volume 37, No. 4)

Only keywords are supplied in this index. Citations are to “volume/issue:pages.” For the earliest issues, for which volume numbers were assigned retroactively, a concordance between volume/issue numbers in this index and the whole numbers originally assigned follows:

1/1*	No. 1	2/2*	No. 5	3/2*	No. 9	4/2*	No. 13
1/2*	No. 2	2/3*	No. 6	3/3*	No. 10	4/3*	No. 14
1/3*	No. 3	2/4*	No. 7	3/4*	No. 11	4/4*	No. 15
2/1*	No. 4	3/1*	No. 8*	4/1*	No. 12		

In this index, the asterisk after a volume/number reference calls attention to either of two problems. First, for Vols. 1 through 4, the absence of these numbers in the original version (instead, the user must find the whole number as given in the preceding short table, noting that whole No. 8 was labeled No. 7 in error; and second, for later issues, corrected volume/number references are given if the original was incorrectly numbered. The concordance of these appears before the Author Index. Full titles, full names of authors, and references to dates of issue are given in the Author Index.

Advertising Covers

Census (Baum)	26/2: 4-11
Medical remedies (Roughton)	20/4: 6-8
Piedmont Wagon Company (Crumbley)	36/4: 18-19
Salem Iron Works (Burkette)	36/1: 7-11
Tobacco (Crumbley)	28/1: 3-8

African-American

James City (Crumbley)	15/3: 3-4
Method (Crumbley)	20/3: 10-11
Oberlin (Crumbley)	30/3: 10-11
Postmasters (Justesen)	25/2: 3-11

Air Mail

25th Anniversary Wright Brothers Flight (Stroupe)	22/3: 3-4
A. C. Roessler (Crumbley)	22/3: 11-12
Airport dedications (Crumbley)	22/1: 3-10
All-North Carolina airmail week, 1937 (Crumbley)	22/4: 3-19
All North Carolina air mail flight, 1937 (Crumbley)	16/4: 6-10
Charlotte air mail facilities (Crumbley)	22/3: 16
Contract Air Mail first flights (Crumbley)	22/2: 3-17
Crash mail (Crumbley)	22/2: 17
First air mail flight in NC, Wilmington (O'Sullivan)	5/4: 3-5
First flights, contract (Crumbley)	22/2: 3-17
Flights, official (Crumbley)	22/3: 14-15
History (Crumbley)	2/1*: 1-3
National air mail week, 1938 (Crumbley)	4/2*: 5-6

National air mail week revisited on 100th anniversary of first air mail service (Crumbley)	37/3: 3-19
Space covers, western North Carolina (Steward)	34/1: 3-7
Wright Brothers' first flight, reporting attempts (Gallico)	22/3: 13
Wright pylon dedication (Crumbley)	22/4: 21

Biographical Sketches

Allen, John	28/2: 3
Crumbley, Tony L.	27/1: 3,14
Jaronski, Stefan T.	26/2: 3,14
Perkinson, Phillip	26/3: 3,16
Roughton, Jerry R.	26/4: 3
Tilles, Dr. Harvey G.	26/1: 3
Wall, Phillip	27/2: 3
Weiner, Richard D.	28/1: 9

Book Reviews

<i>Dirty Ankle Is Far From Bath</i> , N.C. by Henry King (Crumbley)	14/2: 15
Petitions for Pardons, 1865-67: Koonts (Stroupe)	15/1: 2
<i>Self-Sufficiency at All Costs</i> : Ridgway (Cohn)	8/2: 4

Cachets

Boone, Richard P., maker (Crumbley)	19/1: 8-11
Johnson, Andrew, 125th birth anniversary (Bursey)	34/1: 8-12
Mendenhall, Shumaker, makers (Bursey)	28/4: 8-11
Raft Swamp anniversary (Doares)	15/2: 13-14

Swansboro (Herring)	6/2: 23
Cancellations	
1930 type "E" 4-bar (Crumbley)	14/4: 3-8
Bartonsville (Crumbley)	20/2: 3-5
Chapel Hill, 1794, type 0.5 (Ed.)	20/3: 3
Charlotte (Crumbley)	3/4*: 1-10
Charlotte, 1897 tractor tire (Crumbley)	10/2*: 8-11
Doane (Crumbley)	2/2*: 2-3
Doane (Wicker)	2/3*: 2-6
Doane additions & corrections (Wicker)	7/2: 13-15
Doane update (Crumbley)	15/2: 7-12
Doane update (Wicker)	3/1*: 5-6
Doane update (Wicker)	5/1: 3-10
Doanes online (Crumbley)	24/2: 14-15
Doremus (Crumbley)	2/4*: 6-7
Duplex cancels, project in need (Crumbley)	34/4: 3-8
Elmwood post office postmark book (Winter)	26/2: 12-14
Embossed (Crumbley)	15/3: 10-11
Fancy, census (Crumbley)	11/3: 7-9
Fancy, Charlotte (Crumbley)	8/2: 4
Fancy, Patterson (Crumbley)	11/3: 5
Fancy, Southport (Crumbley)	6/4: 13
Flag (Wicker)	3/2*: 3-7
Greensboro PAID handstamp revisited (Richarson)	34/2: 3-5
Kitty Hawk, multiple devices? (Cieselski)	31/4: 13
Mechanic, North Carolina – new straight-line (Crumbley)	29/2: 11
Mount Tirzah, 1796 (Ed.)	10/3*: 15
Murfreesborough, 1808 (Ed.)	13/4: 16
Philatelic truck FDC (Crumbley)	3/1*: 3-5
Post offices opened during Doane period (Boubelik)	11/2: 8-10
Postmark catalog, new (Winter)	26/1: 12-13
Postmark museum, Margie Pfund memorial (Winter)	27/3: 14-15
Pre-1800 postmarks (Winter)	24/2: 7-11
Quaker (Wicker)	3/3*: 2-5
Raleigh, Type 3, size (Ed.)	20/3: 3
Salem (Crumbley)	5/2: 3-5
Civil War	
The <i>Curler</i> – transportation to Nags Head (S. Troutman)	29/2: 7-10
Hatteras Coast, Confederate Army mail 1861-1862 (Jaronski)	37/2: 3-15
Magnus envelopes related to North Carolina (Bursey)	27/4: 3-10
Semi-official return envelopes, 1864 gubernatorial election (Bursey)	37/3: 20-25
Stokes County peach brandy making (S. Troutman)	7/3: 13
New Bern postal service (Bursey)	35/3: 3-15

College Covers

Carolina Female College (Vestal)	8/3: 3
Chowan College (Crumbley, McDowell)	20/3: 5-8
Chowan Female Institute (Crumbley, McDowell)	20/3: 5-8
Davidson College (Crumbley)	21/3: 3-10
Davidson College, illustrated (Ed.)	23/3: 15
Davidson College, student letter (Weiner)	21/3: 11-13
Davis School, military boarding (Crumbley)	24/3: 8-9
Edgeworth Female Seminary (Winter)	34/1: 13-15
Edgeworth Female Seminary (Winter)	35/1: 15-17
Flora MacDonald College, Red Springs (Crumbley)	32/4: 12-15
Glen Anna Female Seminary (Crumbley)	15/3: 10-11
Hillsborough Military Academy (Crumbley)	23/1: 3-9
Horner & Horner School (Ed.)	12/3: 15
Horner's School (S. Troutman, Mayes)	12/4&: 5-6
North Carolina Institution, Deaf, Dumb, Blind (Crumbley)	28/4: 3-7
Oxford Female College (Crumbley)	35/1: 18-19
University of North Carolina (Holt)	17/4: 3-11
UNC-Chapel Hill: Navy pre-flight training (Crumbley)	37/2: 16-19
Wake Forest College (Crumbley)	20/4: 3-5
Wake Forest University (Crumbley)	33/1: 3-10
Wesleyan Female Academy, Murfreesboro (Crumbley)	20/2: 5-8
Women's Colleges (Crumbley)	36/3: 3-13

Colonial

Earliest, 1759 (Crumbley)	10/2*: 6-7
Hugh Finlay journal, 1773 (Ed.)	9/4: 9-15
New Bern, 1770 cover (Ed.)	20/3: 3-4
Pre-1800 postmarks (Winter)	24/2: 7-11
Siskin auction (Winter)	25/1: 14
Wilmington, 1769, 1772 covers (Ed.)	20/3: 3-4

Confederates

CSA No. 3 covers (Crumbley)	14/2: 3-6
CSA No. 3 covers (Warren)	17/2: 14-15
CSA No. 3, 2¢ green issue (Crumbley)	14/4: 14
3¢ rate? (Crumbley)	18/3: 9-10
CSA No. 7, largest known multiple (Crumbley)	16/4: 3
20¢ green cover (Warren, Crumbley)	17/1: 12-15
Addressed to Swann's Station (Homesly)	10/4: 14-15
Addressed to Thomas Ruffin (Bursey)	33/2: 13-16
Advertising cover census (Baum)	26/2: 4-11
Bayonets, Rails, Jonathon McGee Heck (Hall)	31/2: 3-10
Blockade mourning cover, frameline (Monroe)	21/4: 11
Bonitz patriotic envelopes (Bursey) plus Addendum	28/1: 3-8,
Camp Stokes, 1864-1865 (Jaronski)	34/2: 7-8

Carolina City provisional (Crumbly)	5/4: 10-14	Abbotts Creek, paid 3 (B. Green)	9/2: 3
Color Cancels (Crumbly)	30/3: 13-16	Bath, 1777 (Crumbly)	25/1: 3-7
Confederate Post Office Department letters (Stets)	16/1: 7	Bill of Rights NC copy (Crumbly)	23/2: 13-15
Dunn's Rock (Ed.)	7/3: 14	Chapel Hill, 1794, Type 0.5 marking (Ed.)	20/3: 3
Dunnsville (Crumbly)	27/3: 3	Chapel Hill, 1827 (Crumbly)	5/4: 17
Fantasies (Crumbly)	13/4: 4	Davidson College, student letter, 1837 (Weiner)	21/3: 11-13
Flat Rock (Crumbly)	20/2: 12-15	Elizabeth City, handstamp rate markings 1835-1840 (Crumbly)	34/1: 16-19
Frameline (Lohr)	25/1: 8	First Postmistress (Crumbly)	28/2: 14-15
Frameline uses (Crumbly)	19/1: 7	Greensboro, 2 postmasters, 1811 (Stets)	14/1: 6
Frameline, blockade, mourning (Monroe)	21/4: 11	Hazard, Ebenezer, journal, 1777-1778 (Johnston)	10/1: 4-13
Independent statehood cover (Monroe)	21/4: 11	Hooper, William, letter, 1776 (Winter)	21/2: 3-5
Largest known multiple of CSA No. 7, (Crumbly)	16/4: 3	Hyde County, first post road into, 1800 (Winter)	21/2: 11-15
Lenoir provisional (Crumbly)	7/3: 3-7	Independent State Periods, NC, TN (Crumbly)	15/2: 12
"Lowenburg & Bro." patriotic envelopes, Beaufort (Bursey)	28/2: 11-14	Jamestown, paid 1 (B. Green)	9/2: 3-4
Mourning, blockade, frameline (Monroe)	21/4: 11	Journal, Ebenezer Hazard, 1777-1778 (Johnston)	10/1: 4-13
Oxford (Mayes, S. Troutman)	12/3: 3-14	Mount Tirzah, 1796 cover (Ed.)	10/3*: 15
Patterson fancy cancels (Crumbly)	11/3: 5	Murfreesboro cover, 1808 (Ed.)	13/4: 16
Raleigh 68XU1, new variety (Crumbly)	27/3: 11-13	Newbern post office advertisement, 1797 (Ed.)	20/3: 9
Raleigh bayonet factory (Perkinson, Crumbly)	21/1: 11-12	Newbern roulettes, 1851 Issue (Ed.)	15/1: 10-11
Raleigh/Saxapahaw turned cover (Holt)	21/4: 7-8	North Carolina, 1789-1795, part 1 (Hecht)	8/1: 12-19
Raleigh, markings, color varieties (Crumbly)	32/1: 12-16	North Carolina, 1789-1795, part 2 (Hecht)	8/3: 4-12
Raleigh, semi-officials, Executive Department (Bursey)	30/1: 10-16	North Carolina, 1789-1795, epilogue (Stets)	8/3: 12-14
Roanoke Island (Jaronski)	4/2*: 7-9	Oxford (Mayes, S. Troutman)	12/3: 3-14
Roanoke Island (Jaronski)	7/3: 10-12	Oxford (Stets)	12/4*: 3-4
Roanoke Island, Confederate letter after battle (S. Troutman)	25/4: 10-13	Post Roads, 1820 (Tilles)	3/3*: 5-6
Railroads and mail (Crumbly)	16/1: 8-12	Pre-1800 postmarks (Winter)	24/2: 7-11
Salem (Crumbly)	5/2: 3-5	Salem, 1796 (Ed.)	6/2: 24
Salisbury, prison (Crumbly)	19/3: 4-6	Salem, 1833, new fancy cancel (Crumbly)	5/2: 5
Salisbury, prison (Harrison)	19/3: 7-13	Scotland Neck (McDowell)	7/4: 3-8
Salisbury, prison (White)	19/3: 3	Scuppernong, 1803, early cover, mystery (Winter)	24/1: 15
Saxapahaw turned cover (Holt)	21/4: 7-8	Scuppernong, solution to mystery (Winter)	24/2: 12-13
Secession date (Crumbly)	15/1: 12-13	Snow Hill, 1803, earliest known cover, mystery (Winter)	24/1: 14
Semi-official, new (Jaronski)	37/1: 18-19	Siskin auction (Winter)	25/1: 14
Shaffner, John T., Surgeon (Vestal)	10/1: 12-14	Teacher travels, 1835 (Weiner)	28/2: 9-10
Statesville covers (Bush)	7/3: 8-9	War of 1812, Faces in (Crumbly)	32/3: 13-19
Trans-Mississippi express cover (Warren)	17/3: 10	Wilmington not Williamston, 1799 (Winter)	33/2: 18-19
Unique provisionals (Crumbly)	10/2*: 8-11	Early 20th Century (1901-1950)	
Western North Carolina Tourism (Steward)	30/1: 3-9	1937 S.P.A. Convention (Steward)	31/4: 3-9
"Whitaker, Wilmington" patriotic envelopes (Bursey)	28/2: 4-8	Camp Sutton, POW camp (Crumbly)	18/2: 9-11
White Road (B. Green, M. Green)	10/2*: 13	Coal mining disaster, 1925 (Otterbourg)	13/2: 3-8
Wilmington 7- bar killer on CSA No. 8 (Crumbly)	11/3: 6	Dare, Virginia, first day of issue, 18 Aug 1937 (Wetmore, Crumbly)	30/2: 3-8
Wilson, express company label (Crumbly)	9/2: 6-8	First air mail flight in North Carolina (O'Sullivan)	5/4: 3-5
Early (1776-1846)			
6 1/4¢ rate (Crumbly)	18/1: 6-10		
6 1/4¢ rate (Crumbly)	27/2: 12		

First Day of Issue, Scott 797 (Steward)	31/4: 3-9
Flag cancellations (Wicker)	3/2*: 3-7
German POW Camp, 1944-46 (Crumbley)	18/2: 9-11
Great War in Raleigh (Hall)	32/4: 9-11
North Carolina in the Great War 1914-1918 (Hall)	37/4: 3-17
Post cards and rates (Stets)	15/4: 3-4
Registered letters (Crumbley)	30/4: 10-16
Self-opening envelopes (S. Troutman, Tilles)	29/2: 3-6
Spencer (W. Harter, M. Harter)	6/3: 13-15
A weather report postal card (S. Troutman)	29/3: 15
Wright brothers, 25th anniversary (Stroupe)	22/3: 3-4

Early 21st Century (2001-)

Candidate post offices for discontinuance near Charlotte (Stroupe)	23/1: 10
Current postal history (Crumbley)	26/1: 3-5
Unimproved mail delivery (Brown)	24/3: 15

Express

Confederate company label (Crumbley)	9/2: 6-8
Mail, 1836-1839 (Crumbley)	17/2: 3-7

Fakes

Confederate fake covers (Winter)	21/1 :3-6
Confederate fantasies (Crumbley)	13/4: 4
Greensboro Paid 10 patriotic cover (Stroupe)	13/4: 11
U.S.S. <i>Asheville</i> cover (Crumbley)	19/1: 3

Indexes

1982-1997 (Ed.)	15/4: 12-15
1982-2001 (Ed.)	20/4: 14-19
Postal history bibliography (Crumbley)	4/1*: 5-9
Postmaster finder - postal history database (Ed.)	20/4: 8
Status of postmark catalogs (Winter)	35/2: 19
U.S. Postal Bulletins, New Web Site (Winter)	32/1: 17-19

Later 19th Century (1865-1900)

1869 issue (Crumbley)	15/1: 3-9
1869 update (Richardson)	26/4: 12-13
1869 update (Richardson)	34/4: 13-23
Davis School (Crumbley)	24/3: 8-9
Fort Defiance (Lohr)	11/2: 3-7
Free City Delivery (Ertzberger)	4/2*: 3-5
Fraud Victim, Greensboro, 1880 (S. Troutman, A. Troutman)	10/1: 13
Graham (Holt)	20/3: 7-9
Lenoir family correspondence (Lohr)	11/2: 3-7
Oxford (Mayes, S. Troutman)	12/3: 3-14
Piedmont Wagon Company (Crumbley)	36/4: 18-19
Raleigh, early reconstruction letter (Ed.)	19/3: 14-15
Raleigh, early reconstruction letter (Crumbley)	20/2: 8-10
Reconstruction years, 1865-1876 (Crumbley)	31/2: 11-16
Registered letters (Crumbley)	30/4: 10-16
Reopening post offices, 1865-70 (Stanton)	6/3: 3-11

RFD, first (Wicker)	4/2*: 1
RFD, first, China Grove (Lasley)	4/2*: 1-3
Round the world cover, 1899 (Ertzberger)	34/4: 11-12
Rural Mail Service (Arthur)	16/2: 3-4
Salem Iron Works (Burkette)	36/1: 7-11
Scotland Neck (McDowell)	7/4: 3-8
Self-opening envelopes (S. Troutman, Tilles)	29/2: 3-6
Unimproved mail delivery (Brown)	24/3: 5
Warren Plains, 1895 advertisement (Ed.)	21/4: 15

Later 20th Century (1951-2000)

Bicentennial of NC statehood cancels (Tilles)	26/3: 8-12
Freedom Train 1976 (Cate)	32/4: 5-8
Greensboro on a shoestring (Sparks)	6/2: 21-22
Kennedy FDC (Scheuer)	11/3: 14-15
North Carolina Museum of Art painting, 1993 Christmas stamp (Ed.)	11/5*: 15
Postal history exhibit opens (Ed.)	18/1: 3-4
Postal Service sponsors 1992 Olympic Games (Estus)	16/4: 12-13
Purple machine cancels (Crumbley)	20/1: 9-11
Space covers, western NC (Steward)	34/1: 3-7
Sprayed-on postmarks (S. Troutman)	12/2: 12-13
"Unofficial" self-inking postmarkers (Stets)	7/2: 3-6

Mechanization

Industrial revolution, part 1 (Crumbley)	21/4: 3-7
Industrial revolution, part 2 (Crumbley)	22/1: 11-17
Pioneer machine Cancels (Crumbley, Winter)	31/3: 3-26

Military

58th NC Troops in eastern Tennessee (Winter)	36/3: 14-17
Camp Davis (S. Troutman)	12/1: 14-15
Camp Hoffman (Nelson)	18/2: 12-13
Camp Lejeune Marine Corps Base (Hall)	25/1: 3-14
Camp Stokes CSA 1864-1865 (Jaronski)	34/2: 7-8
Camp Sutton POW camp (Crumbley)	18/2: 9-11
Centreville to Gen. Matt Ransom (S. Troutman)	32/3: 10-11
Cherry Point Marine Corps Air Station (Hall)	36/4: 3-12
Faces in the War of 1812 (Crumbley)	32/3: 13-19
Fayetteville, arsenal/armory (Hall)	28/3: 9-14
Fort Johnston (S. Troutman)	24/3: 1 1-12
German POW camp, 1944-1946 (Crumbley)	18/2: 9-11
Great War in Raleigh (Hall)	32/4: 9-11
Hatteras Coast Confederate mail service, 1861-1862 (Jaronski)	37/2: 3-15
Hot Springs World War I internment camp (Winter)	27/1: 4-13
NC Fortifications, Part 1 (Crumbley)	12/1: 3-14
NC Fortifications, Part 2 (Crumbley)	12/2: 3-8

Navy pre-flight training school, UNC-Chapel Hill (Crumbly)	37/2: 16-19	Col. George Little, Steamship 20 cent cover, redirected from Swansboro (Winter)	26/1: 6-1
Raleigh bayonet factory (Perkinson, Crumbly)	21/1: 11-12	Confederate surgeon Shaffner (Vestal)	10/3*: 12-14
Roanoke Island mail via Elizabeth City (Jaronski)	33/2: 3-6	Durants of Durant's Neck (S. Troutman)	26/3: 7
Mourning Covers		First federally appointed woman postmaster (Stroupe)	25/1: 13
Blockade mourning cover, frameline) (Monroe)	21/4: 11	Fraud victim, Greensboro, 1880 (S. Troutman, A. Troutman)	10/1: 13
Mourning covers (Crumbly)	23/3: 3-8	Gorrell, Ralph, and family (Bursey)	26: 3-7
Naval		Griffin, Luther S. (Griffin)	7/1: 13-14
4 U.S.S. <i>Raleighs</i> (Crumbly)	18/2: 3-8	Heck, Jonathon McGee: bayonets and rails, Confederacy (Hall)	31/2: 3-10
Blockade mail through Wilmington (Walske)	24/3: 3-7	Hedrick, Benjamin Sherwood (Bursey)	27/3: 4-10
Brig <i>Phebe</i> (S. Troutman)	17/3: 6-9	Hege, Constantine Alexander & Salem Iron Works (Burkette)	36/1: 7-11
The <i>Curlew</i> – transportation to Nags Head (S. Troutman)	29/2: 7-10	Henderson, John Steele (Arthur)	16/2: 3-4
Dismal Swamp Canal mail (Wickert)	7/2: 7-10	Hooper, William (Winter)	21/2: 3-5
England to Wilmington (Winter)	17/3: 11-13	Horne, Hugh Jarvis, first NC postal history collector (Crumbly)	36/4: 14-17
Fast freight from Baltimore through Wilmington (S. Troutman)	25/1: 9	Johnson, Andrew, 125th birth anniversary (Bursey)	34/1: 8-12
Fighting ships called "North Carolina" (Crumbly)	14/3: 3-13	Johnston, James C. (Schoolmeester)	6/1: 10-11
Lightship service (S. Troutman)	10/1: 3-4	Keehn, O. A. (Crumbly)	5/2: 3-5
North Carolina ship names (Crumbly)	19/2: 3-15	Largest NC Confederate Collection sold (Crumbly)	36/2: 8-10
Ship covers (Winter)	32/4: 15-19	Lenoir family (Lohr)	11/2: 3-7
Steamship 20 marking, redirected from Swansboro (Winter)	26/1: 6-11	MacRae, Midshipman Archibald (Winter)	30/4: 17
U. S. Naval Lyceum (Winter)	30/4: 17	MacRae, Duncan, Fayetteville postmaster (Roughton)	25/1: 10-11
U.S.S. <i>Asheville</i> fake (Crumbly)	19/1: 3	NC first woman postmaster (Crumbly)	28/2: 14-15
Wilmington & Fayetteville river route marking (Homesly)	10/4: 19	Pfund, Margie, postmark museum (Winter)	27/3: 14-15
Wilmington & Raleigh Railroad steamboats (Winter)	23/3: 9-13	Philatelic Genealogy (Miller)	30/2: 18-19
Obituaries & Death Notices		Ransom, Gen. Matt, Centreville cover to (S. Troutman)	32/3: 10-11
Caldwell, Jean B.	24/4: 15	Shaffner, Dr. John F. (Vestal)	10/3*: 12-14
Harper, William	9/4: 2	Siamese twins (Venable)	17/2: 12-13
Harris, James P.	15/2: 2	Spencer, postmasters (Stout)	6/4: 12
Holt, W. Clary	22/4: 20	Stroupe, Vernon S., Jr., collection sampler (Crumbly)	25/3: 3-15
Hunt, Robert H.	21/3: 12	Teacher, 1835 (Weiner)	28/2: 9-10
McDowell, Harry L.	22/4: 20	Transylvania County post office officials (Wetmore)	9/1: 3-14
Outlaw, Robert, 1929-2012	32/1: 3	Postal Notes	
Sapperstein, Perry M.	16/1: 2	Company Shops/Burlington (Ed.)	19/1: 4-6
Scott, George	7/1: 19	Post Offices	
Stroupe, Vernon S., Jr.	25/2: 11	Aquone (Scott)	5/3: 14
Stroupe, Vernon S., Jr.	25/3*: 3	Cave post offices (Lera)	37/4: 18-23
Troutman, Scott M., 1950-2015	34/2: 6	Davidson River (Zamplas)	8/1: 10-11
Wicker, Milton G.	8/1: 2	Edenton (Crumbly)	30/3: 10-14
Powell, William Stevens, 1920-2015	34/3: 18	Elizabeth City, stampless rate markings, 1835-1840 (Crumbly)	34/1: 10-19
People		First site survey submitted (Stroupe)	9/3: 7-9
Allen family, Tally Ho (S. Troutman)	11/2: 13	Grandy (Schoolmeester)	5/3: 14-16
Barron, Commodore Samuel (Monroe)	29/2: 12-13		
Bunker, Chang & Eng (Venable)	17/2: 12-13		
Carter, Midshipman Samuel P. (Winter)	30/3: 18-19		

Grimshawes (Ed.)	4/4*: 14	Fourth railroad over Blue Ridge (S. Troutman)	15/2: 5-7
Hertford (Schoolmeester)	5/3: 14-16	Freedom Train 1976 (Cate)	32/4: 3-8
Indian connected names (Wetmore)	11/4*: 3-13	Goldsboro & Morehead City agent marking ()	26/4: 14-15
Jarvisburg (Schoolmeester)	5/3: 14-16	Highway Post Offices (Tilles)	3/1*: 11-13
Natural Wells (Roughton)	16/2: 5	Individual railroad clerk markings (S. Troutman)	20/3: 13-14
Odd names (Goerch)	9/3: 10-12	Jamesville & Washington Railroad, aka jolt & wiggle (Crumbly)	35/3: 16-18
On post cards (Crumbly)	25/1: 14-15	Karrer, Robert J. postal history sale (S. Troutman)	34/2: 18-19
Puella (Sherrill)	14/1: 14-15	Last steam railroad (Hensley)	15/3: 5-7
Raft Swamp challenge (Stroupe)	8/2: 12	Lenoir & Lancaster RPO (S. Troutman)	24/3: 10-11
Raft Swamp, oldest building? (Doares)	8/2: 8-11	Mackey Ferry & Belhaven RPO (S. Troutman)	18/3: 7
Raft Swamp, time warp (Stroupe)	8/2: 11	Norfolk & Raleigh RPO (S. Troutman)	18/3: 7
Salvo (Leland)	7/4: 12-13	Norfolk & Western, Ashe County (Hensley)	15/3: 5-7
Salvo to reopen? (Ed.)	12/4*: 13	Petersburg & Roanoke Railroad (Ed.)	7/4: 14
Spencer (W. Harter, M. Harter)	6/3: 13-15	Pre-Civil War railroads (S. Troutman)	10/4: 3-18
Transylvania County (Wetmore)	9/1: 3-14	Railroads and mail (Crumbly)	16/1: 8-12
Wendell site survey (Mattox)	11/5*: 13	Raleigh & Gaston (Crumbly)	30/2: 14-17
Precancels		Raleigh & Gaston, slow mail (Stroupe)	6/4: 10
Overview (Postlewait)	8/2: 5-7	Raleigh & Gibson's Station Railroad (Winter)	35/4: 22-23
Roessler, 650 (Crumbly)	22/4: 20	Scuppernong (Winter)	24/1: 15
Pre-Civil War (1847-1860)		Snow Hill (Winter)	24/1: 14
1847 issue (Richardson)	16/3: 3-10	Southern Railroad, Johnson City to Spruce Pine RPO (Winter)	31/4: 14-15
1851 issue delivered, July 1851 (Richardson, Schoolmeester)	9/3: 3-5	Statesville Line (Crumbly)	10/4: 2
The <i>Curler</i> – transportation to Nags Head (S. Troutman)	29/2: 7-10	Tweetsie (S. Troutman)	15/2: 15
Karrer Robert J., collection, North Carolina covers (S. Troutman)	34/2: 18-19	Virginia Creeper (Hensley)	15/3: 5-7
Newbern roulettes, 1851 issue (Ed.)	15/1: 10-11	Western Railroad, 1852-1879 (Hall)	33/3: 3-11
New Bern roulettes (Hulme)	15/1: 10	Wilmington, Charlotte & Rutherford Railroad (S. Troutman)	16/1: 13-14
Oxford (Mayes, S. Troutman)	12/3: 3-14	Wilmington & Manchester Railroad (S. Troutman)	24/3: 13
Raleigh type 3 CDS, size (Ed.)	20/3: 3	Wilmington & Raleigh Railroad (Crumbly)	28/1: 11-15
Scotland Neck (McDowell)	7/4: 3-8	Wilmington & Raleigh Railroad, NC's First Chartered (Crumbly)	35/4: 3-22
1847 5¢, 10¢; quantities shipped, 1848-1851 (Ed.)	1/2*: 2	Wilmington & Raleigh Railroad, cover, Charleston to Paris (Winter)	16/1: 5-7
Shallotte, 1858 provisional (Crumbly)	10/2*: 8-11	Wilmington & Raleigh Railroad Steamboats (Winter)	23/3: 9-13
Warrenton cover used as note pad (Sanford)	12/2: 11	Wilmington & Rutherfordton RPO (S. Troutman)	14/4: 15
Railroads, Highways, and Markings		Wilson & Fayetteville Railroad (S. Troutman)	23/2: 15
Atlantic & East Carolina Railroad (S. Troutman)	18/3: 7	Wilson & Fayetteville Railroad RPO (S. Troutman)	30/2: 9
Atlantic, Tennessee & Ohio Railroad (Crumbly)	10/4: 2	Ration Stamps	
Atlantic, Tennessee & Ohio Cover (S. Troutman)	26/3: 13	World War II (Crumbly)	20/1: 5-8
Beaufort & Goldsboro RPO (S. Troutman)	18/3: 7	Revenue Stamps	
Boone & Johnson City (S. Troutman)	15/2: 15	First federal issue (Crumbly)	12/4*: 8-10
Cancellations, two interesting (S. Troutman)	31/1: 15-16	Hunting and fishing (McRee)	6/4: 6-9
Carolina Central Railroad (S. Troutman)	31/4: 10-12		
Clinchfield Railroad (S. Troutman)	15/2: 5-7		
Confederate mails (Crumbly)	16/1: 8-12		
Dante & Spartanburg RPO (S. Troutman)	15/2: 5-7		
First NC chartered railroad, Wilmington & Raleigh (Crumbly)	35/4: 3-22		

Hunting and fishing, 1986-1988 (McRee)	9/2: 8-11	Cherry Point Marine Corps Air Station (Hall)	36/4: 3-12
Hunting and fishing, 1988-1991 (McRee)	11/5*: 8-12	China Grove (Crumbly)	16/2: 4-5
Liquor permits (S. Troutman)	32/2: 3-5	China Grove, first RFD (Lesley)	4/2*: 1-3
Sales tax coupons (S. Troutman)	25/2: 12-13	Cobb's (S. Troutman)	23/3: 13-14
Towns and Markings		Columbus County (Hall)	33/1: 12-19
7-1-71 FDCs (Crumbly)	17/3: 14-15	Como (Worrell)	5/4: 7-9
Abbotts Creek paid 3 (B. Green)	9/2: 3	Company Shops (Bolden)	13/4: 8-9
Abshers (S. Troutman)	11/3: 11-13	Company Shops (Crumbly)	13/2: 9-15
Agate (Worrell)	5/4: 7-9	Company Shops, refugee banking (Holt)	20/1: 3-4
Adako (S. Troutman)	11/5*: 3-7	Concord (Crumbly, Stroupe)	9/4: 3-8
Asheboro to Cornwall, England (Winter)	34/4: 9-10	Confederate-only Dunnsville (Crumbly)	27/3: 3
Asheville (Stroupe, Crumbly)	24/4: 3-8	Corner cards used as postal markings (Crumbly)	17/1: 3-5
Asheville, Glenrock Station, spooky post card (Capps)	26/1: 12-13	County cancels (Ertzberger)	4/4*: 3-13
Asheville, new, type 3.5 (Stroupe)	24/4: 9	Cowansville to Germany (Winter)	17/1: 10-11
Asheville, new, type 3.5, comments (Winter)	26/2: 15	Dare County (Crumbly)	7/1: 3-12
Apex (Crumbly)	20/4: 3-5	Davidson College (Ed.)	23/3: 15
Auxiliary markings In North Carolina (Steward)	35/2: 3-12	Davidson College (Crumbly)	21/3: 3-10
Axtell (Perkinson)	18/3: 11	Davie County (Ertzberger)	5/3: 3-13
Bairds Forge (S. Troutman, Crumbly)	15/4: 4-8	Diamond City (S. Troutman)	23/1: 14
Bartonsville (Worrell)	5/4: 7-9	Dillsboro (Parris)	6/4: 11-12
Bath, book review (Crumbly)	14/2: 15	Dockery (S. Troutman)	11/3: 11-13
Bear Poplar (Crumbly)	16/1: 5-6	Duck (S. Troutman)	21/4: 13-14
Belvidere (S. Troutman)	16/4: 15	Dunn's Rock (Ed.)	7/3: 14
Bertie County post offices, a historical find (Crumbly)	33/2: 8-11	Dunn's Rock 1855-1877 (Crumbly)	37/1: 14-17
Bertie County, letter to editors (Jackson)	34/1: 18-19	Dunnsville (Crumbly)	27/3: 3
Bicentennial of statehood cancels (Tilles)	26/3: 8-12	Durant's Neck (S. Troutman)	26/3: 7
Black Cities of Wake (Crumbly)	20/3: 10-11	Durham, tobacco (Crumbly)	21/1: 7-10
Black River Chapel (Slaton)	36/1: 3-6	Dymond City (S. Troutman)	23/1: 14
Blue Ridge Rural Station (Crumbly)	16/3: 13	Edenton straight-line (Stroupe)	11/5*: 14
Burlington (Bolden)	13/4: 8-9	Edgemont (S. Troutman)	11/5*: 3-7
Camp Greene (Crumbly)	12/2: 9-10	Elizabeth City (Stroupe)	6/1: 12-14
Camp Sutton, POW camp (Crumbly)	18/2: 9-11	Elizabeth City (Stroupe)	7/4: 10-12
Camp Lejeune Marine Corps Base (Hall)	35/1: 3-14	Elizabeth City, military mail from Roanoke Island (Jaronski)	33/2: 3-6
Cana (Vestal)	12/4*: 15	Elizabeth City, stampless rate handstamp 1835-1840 (Crumbly)	34/1: 10-19
Carolina City provisional (Crumbly)	5/4: 10-14	Elizabethtown (Stroupe)	7/4: 10-12
Cary (Crumbly)	20/4: 3-5	Elmwood Post Office postmark book (Winter)	26/2: 12-14
Cave post offices (Lera)	37/4: 18-23	Embossed postmark (Crumbly)	14/2: 10-11
Centreville, to Gen. Matt Ransom (S. Troutman)	32/3: 10-11	Enfield to Paris (Winter)	30/2: 12-13
Chapel Hill, 1827 (Crumbly)	5/4: 14	Englehard (S. Troutman)	13/4: 6-7
Chapel Hill provisional (Crumbly)	10/2*: 8-11	Fallstown (Nelson)	18/2: 15
Chapel Hill provisional paid 5 (Holt)	21/1: 15	Fancy Cancels (Schoolmeester)	8/1: 3-9
Charleston SC to Belgium, Wilmington & Raleigh Railroad (Winter)	16/1: 5-7	Fayetteville, arsenal/armory (Hall)	28/3: 9-14
Charlotte (Crumbly)	3/4*: 1-10	Fayetteville, D. MacRae (Roughton)	25/1: 10-11
Charlotte, 1859 visit (Crumbly)	10/1: 14-15	Fayetteville paid, oval sunburst (Stroupe)	4/2*: 9-10
Charlotte, 1897 tractor tire (Crumbly)	10/2*: 8-11	Flat Rock (Crumbly)	20/2: 12-15
Charlotte air mail facilities (Crumbly)	22/3: 16	Forsyth County, 1841-1986 (Ertzberger)	5/2: 9-20
Charlotte, fancy (Crumbly)	8/2: 4	Fort Bragg (Hall)	29/3: 3-14
Cherry Lane (Crumbly)	17/2: 8-11	Fort Defiance (Lohr)	11/2: 3-7

Fort Defiance (Lohr)	29/4: 3-10	Joynes (S. Troutman)	11/3/11-13
Fort Johnston via Smithville (S. Troutman)	24/3: 11-12	Kannapolis (Crumbley)	29/4: 12-18
Four Oaks to Dixie Hound Kennels (Crumbley)	18/3: 3-4	Kawana (Fricke)	11/2: 14-15
Franklin provisional (Crumbley)	10/2*: 8-11	Kill Devil Hills, postmaster alters history (S. Troutman)	22/3: 5-10
Franklin provisional (Williams)	11/3: 10	Kittrell's Springs (Crumbley)	24/4: 10-14
Franklinville to Paris, France (Winter)	29/4: 18-19	Kitty Hawk, annual celebration (Crumbley)	31/1: 6-14
Free City Delivery (Ertzberger)	4/2*: 3-6	Kitty Hawk, derivation of name (S. Troutman)	22/3: 4
Fuquay Springs (Crumbley)	34/2: 9-17	Kitty Hawk, multiple devices? (Cieselski)	31/4: 13
Galveston 1888-1902 (Cooke)	36/3: 18-19	Lake Landing (S. Troutman)	14/1: 12-13
Gap Creek (S. Troutman)	16/4: 14	Lenoir provisional (Crumbley)	7/3: 3-7
Gaston provisional (Crumbley)	10/2*: 8-11	Leo (Richardson)	8/2: 3
German POW camp, 1944-1946 (Crumbley)	18/2: 9-11	Leo, Update (Winter)	28/4: 13-14
Glen Anna Female Seminary, Taylorsville, embossed (Crumbley)	14/2: 10-11	"Light House" (S. Troutman, A. Troutman)	9/2: 4-6
Glenrock Station, Asheville, spooky post card (Capps)	36/1: 12-13	Lillington to Dixie Hound Kennels (Crumbley)	18/3: 3-4
Gloucester (S. Troutman)	15/1: 14-15	Lotta (Worrell)	5/4: 7-9
Green Level (Crumbley)	20/4: 3-5	Lovelady (S. Troutman, Crumbley)	15/4: 4-8
Greensboro (Wicker, Tilles, Schoolmeister)	6/2: 3-19	Low Gap (S. Troutman)	26/4: 11
Greensboro/Greensborough (Crumbley)	13/4: 12-15	Lupton (Lupton)	15/4: 9-10
Greensboro PAID (Richardson)	30/3: 3-8	Madison (Crumbley)	25/4: 4-7
Greensboro PAID handstamp revisited (Richardson)	34/2: 3-5	Madison, 166 years (Bokoski)	6/1: 3-10
Greensboro provisional (Crumbley)	10/2*: 8-11	Mamie (S. Troutman)	19/1: 15
Gold Hill (Crumbley)	16/1: 14-15	Maney's Neck Township (Worrell)	5/4: 7-9
Granite (S. Troutman, Crumbley)	15/4: 4-8	Manuscript markings (Tilles)	5/5: 17
Granite Falls (S. Troutman, Crumbley)	15/4: 4-8	Margaretsville (S. Troutman)	10/3*: 10
Hatteras Coast Confederate mail service 1861-1862 (Jaronski)	37/2: 3-15	Marking updates (Ed.)	20/4: 2
Hertford (Stroupe)	7/4: 10-12	Marshallberg (S. Troutman)	15/1: 14-15
Hertford (Troutman, S.)	30/1: 17-19	Martindale (Crumbley)	12/4*: 11
Hickory, Piedmont Wagon Company (Crumbley)	36/4: 17-19	Mashoes, Sell Out (Sharpe)	10/2*: 7
Hillsboro provisional (Crumbley)	10/2*: 8-11	Meat Camp (S. Troutman)	30/4: 18-19
Hillsborough (Ed.)	14/1: 16	Mecklenburg County (Wally)	4/3*: 2-18
Hillsborough, update (Stroupe)	14/2: 16	Mecklenburg County RFD system (Ertzberger)	14/1: 8-11
Hillsborough Military Academy (Crumbley)	23/1: 3-9	Method (Crumbley)	20/3: 10-11
Hog Island (Lupton)	15/4: 9-10	Mica mining towns (S. Troutman)	16/4: 14
Holly Springs (Crumbley)	20/4: 3-5	Military bases (Crumbley)	12/2: 3-8
Hotel fancy cancel, 1857 (Stroupe)	7/2: 10	Mill Grove to Brackensheim, Württsmberg (Winter)	32/3: 11-12
Hot Springs, World War I internment camp (Winter)	27/2: 4-13	Mortimer (S. Troutman)	11/5*: 3-7
Houck (S. Troutman)	11/5*: 3-7	Mount Gilead (S. Troutman)	15/4: 11
Hoyleville (S. Troutman)	12/2: 14	Mount Gilead (S. Troutman, Crumbley)	17/1: 5-8
Huntsville, gateway to southern piedmont (Slaton)	37/1: 3-13	Murfreesboro (Stroupe)	13/3: 16
Hyde County, first post road (Winter)	21/2: 11-15	Murfreesboro Wesleyan Female Academy (Crumbley)	20/2: 5-8
James City (Crumbley)	15/3: 3-4	Murfreesboro other college: Chowan (Crumbley)	20/3: 5-8
Jamestown (B. Green)	9/2: 3	Murphey or Murphy (Crumbley)	35/2: 15-17
Jerusalem (Crumbley)	15/2: 3-5	Murphy, manuscript circular date stamp (Stroupe)	12/4*: 12
Jerusalem (S. Troutman)	7/2: 11-12	Museum, Margie Pfund postmark (Winter)	27/3: 14-15

Nags Head, 1846 (S. Troutman)	25/2: 14-15	Purple Machine Cancels (Crumbly)	20/1: 9-11
Nags Head, <i>Curlen</i> , transportation to (S. Troutman)	29/2: 7-10	Raft Swamp (Doares)	15/2: 13-14
Newbern, independent statehood cover (Monroe)	21/4: 12	Raft Swamp, National Preservation Award (Ed.)	10/2*: 12
New Berne or Newbern? (Stroupe)	13/4: 5	Raleigh (Stroupe)	7/4: 10-12
Newbern post office advertisement, 1797 (Ed.)	20/3: 9	Raleigh, color varieties in markings (Crumbly)	32/1: 12-16
New Bern, Civil War postal service (Bursey)	35/3: 3-15	Raleigh, Great War (Hall)	32/4: 9-11
New Bern, Leeds patent envelope use (Pacetti)	31/1: 3-5	Raleigh, new type, 18.5 (Stroupe)	25/1: 12-13
New Garden, Quakers (Ed.)	7/2: 16	Raleigh reconstruction letter (Ed.)	19/3: 14-15
New Hill (Crumbly)	20/4: 3-5	Raleigh, teacher travels, 1835 (Weiner)	28/2: 9-10
New Lebanon (S. Troutman)	23/1: 11-13	Raleigh to Heidelberg, Baden (Winter)	29/2: 14-15
New Sterling, the Third Creek settlement (Slaton)	36/2: 11-14	Red Springs (Crumbly)	32/4: 12-15
Oberlin (Crumbly)	20/3: 10-11	Registered letters (Crumbly)	30/4: 10-16
Octagonal postmarks (Schoolmeester)	6/4: 3-5	Reidsville (Crumbly)	31/4: 16-19
Ore Knob (Crumbly)	17/1: 9	Request for postmark information (Eds.)	36/2: 7
Ore Knob (S. Troutman)	18/2: 14	Riddicksville (Worrell)	5/4: 7-9
Overhills (Hall)	30/4: 3-9	Ridgeway (S. Troutman)	13/3: 15
Oxford, 19th century (Mayes; S. Troutman)	12/3: 3-14	Ridgeway to London (Winter)	16/3: 11-13
Oxford, 2 orphanages (Crumbly)	26/1: 13-15	Roanoke Island, 1835, Elizabeth City CDS (Ed.)	7/1: 20
Oxford, Horner & Horner School (Ed.)	12/3: 15	Roanoke Island, 1835 (S. Troutman)	7/2: 15
Oxford, Horner's School (S. Troutman, Mayes)	12/4*: 5-6	Robeson County (Crumbly, Wetmore)	21/1: 13-14
Pamlico County (Crumbly)	23/2: 3-10	Rocky Mount to Paris (Winter)	18/1: 4-6
Pamlico County (S. Troutman)	23/2: 10-11	Rowan County (Crumbly)	34/3: 3-18
Pantego, 1829 (Ed.)	6/1: 17-18	Rural Station, Blue Ridge (Crumbly)	16/3: 13
Pantego to Tuscarora, RPO covers (S. Troutman)	18/3: 7	Rural Station Update (Rupert, McCord)	16/3: 14-15
Patterson fancy (Crumbly)	11/3: 5	Rural Stations (Rupert, McCord)	16/2: 6-12
Pecan, Bladen County, 18-month office (Ertzberger)	32/4: 3-4	Salem, 1792 (Wiley)	5/2: 7-8
Petersburg & Roanoke Rail Road, 1845 (Ed.)	7/4: 14	Salem, 1796 (Ed.)	6/2: 24
Pierces Forge (S. Troutman, Crumbly)	15/4: 4-8	Salem, 1852-60, 1861-65 (Stroupe)	7/1: 19
Pine Bluff (Crumbly)	26/3: 4-6	Salem, 1833, new fancy cancel (Crumbly)	5/2: 5
Pine Hall, Rural Delivery Route No. 1 (Ed.)	5/1: 12	Salem, O. A. Keehln (Crumbly)	5/2: 3-5
Plymouth (S. Troutman)	25/4: 14	Salisbury (Stroupe)	6/1: 12-14
Plymouth, SHIP marking (Winter)	26/3: 14-15	Salisbury, prison (Crumbly)	19/3: 4-6
Portsmouth (S. Troutman)	25/1: 8-9	Salisbury, prison (Harrison)	19/3: 7-13
Portsmouth Island (Crumbly)	26/4: 4-7	Salisbury provisional (Crumbly)	10/2*: 8-11
Postal history basics (Stroupe)	14/2: 8-14	Salisbury to Houston, Republic of Texas (Winter)	18/3: 5-6
Postal history basics, errors in (Stroupe)	14/3: 14	Salisbury to Leipzig, Saxony (Winter)	24/2: 5-6
Postal history project, State Archives (Winter)	23/2: 12	Salvo to reopen? (Ed.)	12/4*: 13
Postmark catalog (Winter)	26/1: 12-13	Scotland Neck, 1797-1900 (McDowell)	7/4: 3-8
Postmarkers, "unofficial" self-inking (Stets)	7/2: 3-6	Salisbury (Crumbly)	33/4: 5-23
Postmarks or cinderellas? (Stroupe)	15/3: 10-11	Sandy Mush (S. Troutman)	20/3: 12
Postmaster cancels (Ertzberger)	4/4*: 3-13	Scuppernong (Winter)	24/2: 12-13
Prussian closed mail from North Carolina (Winter)	31/2: 17-19	Self-inking postmarkers, "unofficial" (Stets)	7/2: 3-6
		Shallotte, 1858 provisional (Crumbly)	10/2*: 8-11
		Shipyard (S. Troutman)	25/1: 12
		Siler City (Crumbly)	33/3: 16-17
		Siler City pseudo machine cancel (Homesly)	12/4: 7
		Silver, Stanly County (Ertzberger)	3/3: 1-2
		Smithfield, 200 years (Crumbly)	27/4: 11-15

Smithville, Fort Johnston (S. Troutman)	24/3: 11-12	Wiles (S. Troutman)	11/3: 3-4
Sneads Ferry (Troutman)	28/4: 12-13	Wilkes County (Hall)	32/1: 4-11
Sneedsboro (Crumbley)	14/1: 4-5	Wilkesboro (Stroupe)	7/4: 10-12
Snow Camp not in cyberspace (Brown)	24/3: 14	Williamston, Martin County's outstanding office (Crumbley)	32/2: 15-19
Snow Hill, earliest known cover, 1803, mystery (Winter)	24/1: 14	Wilmington, 7-bar killer on CSA 8 (Crumbley)	11/3: 6
Soda Creek (S. Troutman)	16/4: 14	Wilmington blockade cover (Crumbley)	20/2: 10-12
Sodom (S. Troutman)	15/3: 9	Wilmington, blockade, frameline, mourning (Monroe)	21/4: 11
South Mills (S. Troutman)	23/11: 11-13	Wilmington, blockade mail through (Walske)	24/3: 3-7
Southport, 1893 (Crumbley)	6/4: 13	Wilmington, fast freight through (S. Troutman)	25/1: 9
Spencer (Stout)	6/4: 12	Wilmington, first airmail flight, 1912 (O'Sullivan)	5/4: 3-5
Springs of NC (Crumbley)	27/1: 14-19	Wilmington, hard times, 1865 (Ed.)	6/3: 16
Stanly County (Crumbley)	24/1: 3-13	Wilmington, largest known multiple, CSA 7 (Crumbley)	16/4: 3
Stanly County, Silver (Ertzberger)	3/3: 1-2	Wilmington, lost stamps (Crumbley)	20/3: 12-15
Star (Crumbley)	14/4: 9-15	Wilmington, missent to (Jordan)	34/3: 19
Statehood bicentennial cancels (Tilles)	26/3: 8-12	Wilmington, New York to (Winter)	36/1: 14-18
Statesville (Stroupe)	6/1: 12-14	Wilmington to London (Winter)	16/4: 3-5
St. Lewis (S. Troutman)	21/4: 3	Wilmington to Paris (Winter)	16/2: 13-15
St. Lewis (S. Troutman, A. Troutman)	9/3: 6-7	Wilmington to Yarmouth, Nova Scotia (D'Alessandris)	33/4: 3-4
Straits (S. Troutman)	15/1: 14-15	Wilmington, War of 1812 (Ed.)	6/4: 4
Swan Quarter (S. Troutman)	13/4: 9-11	Wilson, express company label (Crumbley)	9/2: 6-8
Swansboro (S. Troutman)	25/4: 8-9	Wilson Creek Gorge, towns along (S. Troutman)	11/5*: 3-7
Swansboro, redirected steamship cover (Winter)	26/1: 6-11	Winfall (S. Troutman)	30/2: 10-11
Tally Ho (S. Troutman)	11/2: 11-13	Winston-Salem (Wiley)	5/2: 7-8
Tally Ho, Allen family (S. Troutman)	11/2: 13	Winston-Salem, postmaster's postmark (Crumbley)	23/1: 15
Taylorsville, embossed (Crumbley)	14/2: 10-11	Zevely handstamps (Mandel)	10/3*: 3-9
Thomasville, embossed (Crumbley)	15/3: 10-11	Union Occupation	
Thomasville, embossed (Stroupe)	15/3: 10-11	6th New Hampshire (S. Troutman)	7/1: 15-18
Trap Hill (Crumbley)	17/2: 8-11	Covers from Union soldiers (Bursey)	27/2: 4-15
Twin City postal system (Wiley)	5/2: 7-8	Eastern North Carolina covers, Part I (McClung)	32/3: 3-9
"Unofficial" self-inking postmarkers (Stets)	7/2: 3-6	Fort Fisher, soldier letter (S. Troutman)	10/3*: 10-11
Updates (Ed.)	20/3: 2	Leeds patent envelope (Pacetti)	31/1: 3-5
Uwharrie (Crumbley)	35/3: 19	New Bern, postal service (Bursey)	35/3: 3-15
Valle Crucis (Crumbley)	36/2: 15-19	New Berne, contemporary accounts (Jaronski)	4/1*: 1-2
Vance County (Perkinson)	2/4*: 2-5	New Berne, initial occupation (Jaronski)	4/1*: 3-4
Vance County (Perkinson)	20/4: 9-11	Roanoke Island (Jaronski)	4/2*: 7-9
Varina (Crumbley)	34/2: 9-17	Sherman's march (Crumbley)	17/3: 3-5
Village Post Offices (Eds.)	33/1: 11	Zouaves (S. Troutman)	24/2: 3-4
Wadesboro (Stroupe)	6/1: 12-13		
Wake County outside Raleigh (Crumbley)	20/4: 3-5		
Wake Forest College (Crumbley)	20/4: 3-5		
Wanchese (S. Troutman)	26/4: 8-10		
Warren Plains, 1865 (Ed.)	8/1: 20		
Warrenton cover used as notepad (Sanford)	12/2: 11		
Washington fancy cancel (S. Troutman)	13/3: 15		
Waterlily (S. Troutman)	15/3: 8-9		
Way Mail (Crumbley)	21/2: 6-10		
Western North Carolina space covers (Steward)	34/1: 3-7		