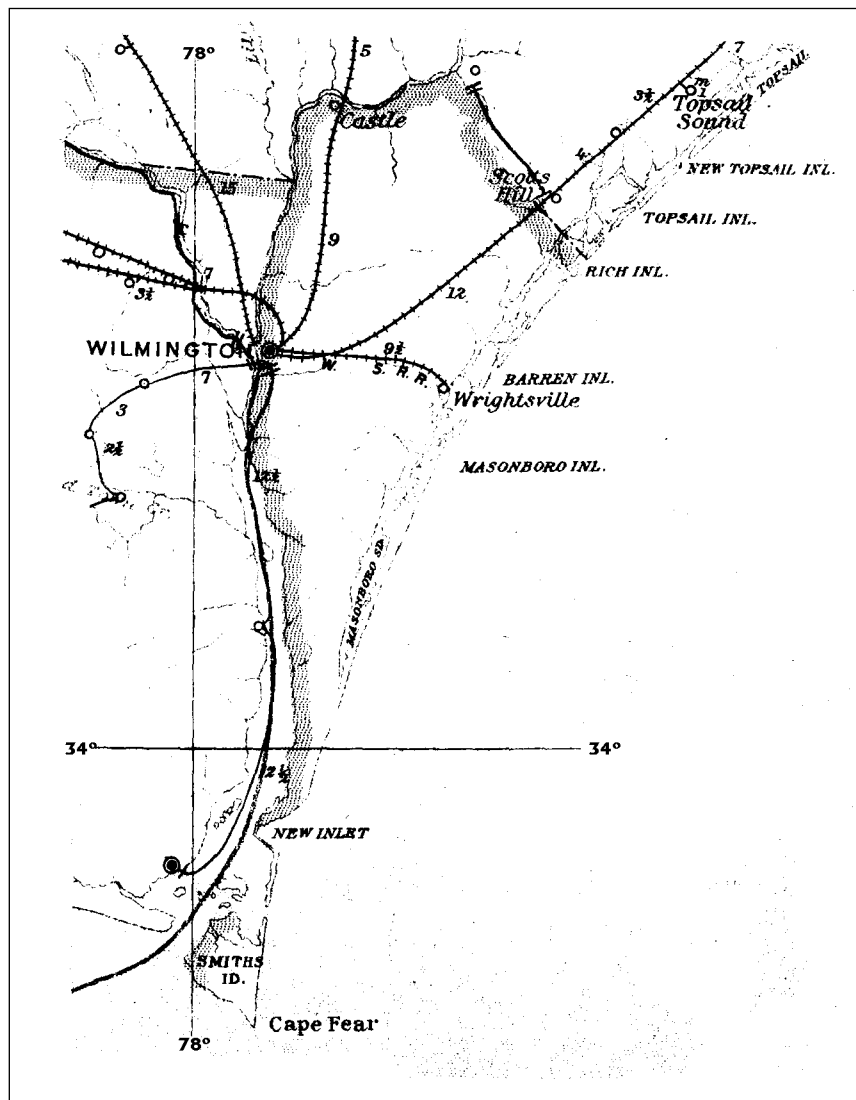


NEW HANOVER COUNTY

Formed in 1729 from Craven County

Number of Post Offices - 45
Number with postmarks known - 18



NEW HANOVER COUNTY

Angola, moved from Onslow County

(New Hanover)

Isaac Rochelle	14 Feb 1856
CSA activity reported, postmaster unknown	
CSA office closed on or before	30 Apr 1865
Federal office discontinued	7 Jan 1867
James Lamb	31 Jul 1871
John H. Mashburn	6 Jun 1873
To Pender County	16 Feb 1875

Ashton

(New Hanover)

Robert T. Henderson	18 Jun 1874
To Pender County	16 Feb 1875

Bannerman

(New Hanover)

John P. Bannerman	12 Apr 1847
No record of CSA operation	
Discontinued	6 Dec 1866

Beatty's Bridge

(New Hanover)

John Beatty	23 Nov 1826
Henry B. Beatty	10 Feb 1827
Name changed to Pleasant District	15 Jan 1833

NEW HANOVER COUNTY

Bishop

(New Hanover)

Henry M. Bishop 1 Aug 1890
 Discontinued 30 Oct 1891
 Papers to Wilmington

Black River Chapel

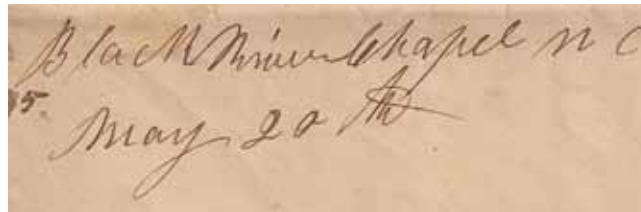
(New Hanover)

James M. Corbett 30 May 1840
 "appt. by mistake"
 John M. Corbett 8 Jul 1840
 Andrew J. Henry 6 Jan 1858
 A. J. Henry, Acting CSA by 1863
 CSA office closed on or before 30 Apr 1865
 William Henry 17 Apr 1866
 Thomas J. Blackburn 28 Aug 1872
 To Sampson County 8 Nov 1872

*Black River
 chapel NC July 11*

Manuscript
 11 Jul 1851

Confederate



Manuscript
 20 May 1862

Burgaw Depot, moved from Cypress Grove (1)

(New Hanover)

Wiley W. Flowers 24 Jan 1854
 J. D. Montegue 31 Jan 1855
 John N. Bowden 11 Jun 1855
 Sterling Allen 3 Aug 1855
 Archibald M. Cowan 4 Apr 1857
 Discontinued 27 Jan 1859
 Benjamin P. Currie 19 Mar 1859
 John S. Player 28 Sep 1859
 Discontinued 19 Dec 1859
 M. Cowan, CSA 6 Sep 1861
 CSA office closed on or before 30 Apr 1865
 Jesse P. Jordan 6 May 1867
 George Highsmith 17 Dec 1867
 William McCallum 10 Apr 1868
 Rufus W. Collins 21 Dec 1868
 Discontinued 3 Nov 1870
 Evander M. Moore 3 Feb 1871
 To Pender County 16 Feb 1875

Confederate

*Burgaw N.C.,
 Feb 18*

Manuscript
 8 Feb 186x
 15 Feb 1863

NEW HANOVER COUNTY

Caintuck

(New Hanover)

Thomas J. Corbett	22 Feb 1849
Discontinued	17 Nov 1851
Thomas J. Corbett	31 Dec 1851
Sylvanus F. Wilson	21 Aug 1854
Thomas J. Corbett	19 Jun 1858
T. J. Corbett, CSA	Bibliog. #19
CSA office closed on or before	30 Apr 1865
Charles B. Barnhill	13 Aug 1866
Discontinued	31 Aug 1868

Camera, name changed from Sills Creek

(New Hanover)

Mary M. Johnson	20 Oct 1865
James Johnson	5 Mar 1868
John Smith	14 Apr 1873
To Pender County	16 Feb 1875

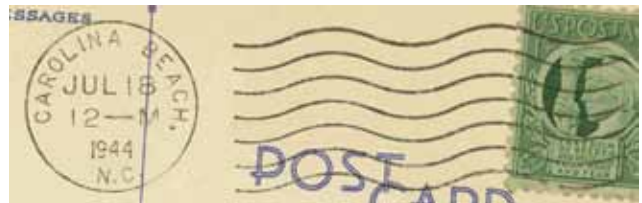
Carolina Beach

(New Hanover)

Alexander W. Pate	18 Jul 1917
Appointment rescinded	8 Oct 1917
Cornelius M. Murrin	22 Nov 1935
John C. Koleman, Acting	2 Sep 1938
John C. Koleman	31 Jul 1939
Walter H. Blair, Acting	1 Aug 1940
Walter H. Blair	13 Feb 1941
Annie B. Morton, Acting	24 Nov 1941
Annie B. Morton	5 May 1942
Pauline P. Creech	6 Mar 1971
Jerry M. Dennis	9 Feb 1980
Robert L. Burkhart Officer-In-Charge	21 May 1987
Donna M. Watson	29 Aug 1987
Pamela K. Valle Officer-In-Charge	27 Jul 2012
John F. Jameson III	6 Oct 2012
Terry D. Rockwell	29 Nov 2014
Ronda Evans Officer-In-Charge	9 Oct 2018
Anthony Buoniconti	2 Feb 2019



Type 1
33.5 mm Black
Type B 4-Bar
1 Sep 1937

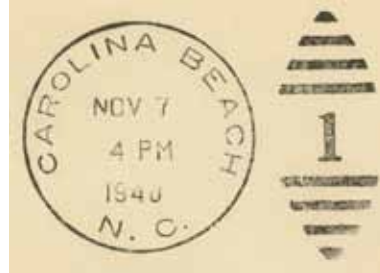


Type 2
23 mm Black
International Machine
Type AT/S 2721
19 Jun 1940
18 Jul 1944

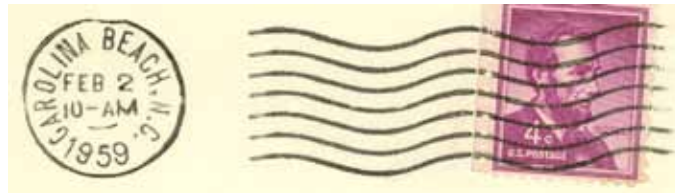
NEW HANOVER COUNTY

Carolina Beach (Cont.)

(New Hanover)



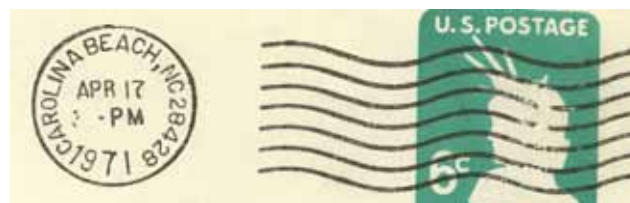
Type 3
30.5 mm Black
Metal Duplex Type ?
7 May 1940
8 May 1961



Type 4
21 mm Black
International Machine
Type D30
29 Oct 1945
6 Aug 1965



Type 5
31 mm Magenta
14 Jun 1955



Type 6
21.5 mm Black
International Machine
Type Nz 30 (28428)
20 Feb 1967
3 Apr 1979



Type 7
32 mm Black
Hanley hand-held roller (28428)
16 Jan 1971

NEW HANOVER COUNTY

Carolina Beach (Cont.)

(New Hanover)



Type 8
32.5 mm Black
1963 Type F/2 4-Bar (28428)
18 Apr 1974
10 Sep 1974



Type 9
33 mm Black
1963 Type F/2 4-Bar (28428)
29 Jan 1990



Type 10
32.5 mm Black
Self-Inking Postmarker
Type 2A (28428)
12 Oct 1990
15 May 1996



Type 11
21.5 mm Black
International Machine
Type Hz 30 (28428)
19 Nov 1990

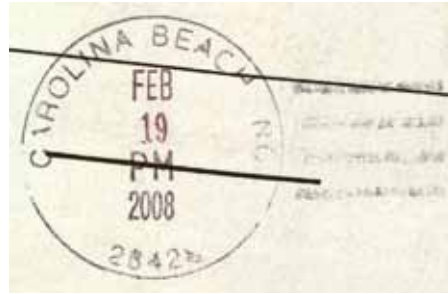


Type 12
30 mm Red
Self-Inking Postmarker (28428)
13 Sep 2006

NEW HANOVER COUNTY

Carolina Beach (Cont.)

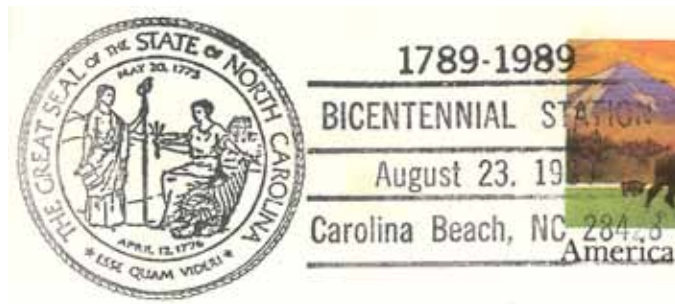
(New Hanover)



Type 13
34.5 mm Black
Self-Inking Postmarker (28428)
19 Feb 2008

Temporary Station Cancels

Bicentennial Station

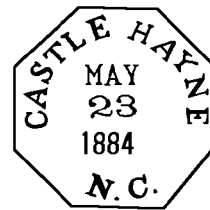


Type 1
86 x 37 mm Black
(28428)
23 Aug 1989

Castle Hayne, Castle

(New Hanover)

James Owen	10 May 1869
John T. Vann	8 Apr 1870
Discontinued	27 Apr 1871
Joseph W. Barnes	11 Apr 1872
Discontinued	25 Mar 1873
J. W. Barnes	3 Jun 1873
Edward Schriver	11 Feb 1874
Discontinued	10 Aug 1874
Edward Schriver	28 Sep 1874
Discontinued	6 Apr 1876
Edward C. Schriver	5 May 1876
Discontinued	17 Mar 1879
John J. Bordeaux	20 Jun 1881
James Cowan	8 Jan 1885
James H. Dorsett	23 Jul 1890
Name changed to Castle	19 Aug 1895
Samuel Blossom	19 Aug 1895
John H. Willis	26 May 1902
Discontinued	5 Sep 1902
William H. Shearin	17 Oct 1902
Name changed to Castle Hayne	24 Feb 1908
John W. Winders	24 Feb 1908
Edward R. Jones	11 Jul 1912
W. H. Shearin	4 Dec 1920
Duncan McEachern, Acting	10 Feb 1925
Annie M. Shearin	8 Sep 1925



Type 1
27 mm Black Octagonal
23 May 1884



Type 2
28 mm Black
7 Feb 1905

NEW HANOVER COUNTY

Castle Hayne, Castle (Cont.)

(New Hanover)

John L. Browning, Acting	3 Feb 1928
Ruby R. Eason, Acting	12 Apr 1929
Ruby R. Eason	16 Dec 1929
Ruby R. Moore (marriage)	21 Jun 1930
Edelweiss Warren, Acting	29 Aug 1933
Edelweiss Warren	27 Nov 1933
Edelweiss Mishoe (marriage)	4 May 1935
Catherine V. Greer, Acting	1 Jan 1966
William R. Todd, Jr.	4 Apr 1968
Jean D. Short	27 Dec 1980
Julian B. Hamer Jr. Officer-In-Charge	29 Mar 1990
John Robert White Jr.	11 Aug 1990
Edward W. Flagler	20 Feb 1993
Phoebe R. Jordan Officer-In-Charge	16 Aug 2002
Phoebe R. Jordan	30 Nov 2002
Carolyn R. Willis Officer-In-Charge	6 Jul 2011
Teresa G. Cochran Officer-In-Charge	13 Jan 2012
Angela D. Ridley Officer-In-Charge	15 Feb 2012
Lutricia Mitchell Officer-In-Charge	
Pamela K. Valle	6 Oct 2012
James Brian Townsend	



Type 3
31 mm Black
1906 Type A/1 4-Bar
28 Oct 1909
5 Dec 1912

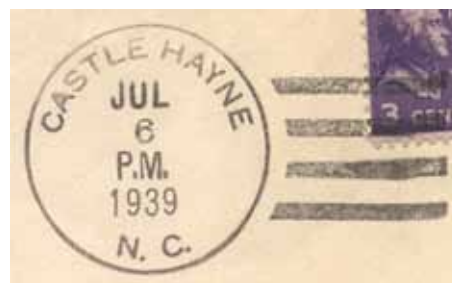


Type 4
32 mm Purple
1910 Type B 4-Bar
30 Jan 1914
22 Feb 1916



Type 5
33 mm Black
1925 Type C/1 4-Bar
13 Feb 1932

33 mm Purple
10 Oct 1932



Type 6
32.5 mm Black
1936 Type F/1 4-Bar
6 Jul 1939
23 Sep 1946



Type 7
30.5 mm Black
Metal Duplex Type ?
23 Mar 1949
1 Sep 1955

NEW HANOVER COUNTY

Castle Hayne, Castle (Cont.)

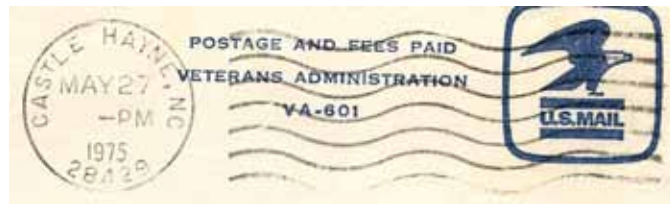
(New Hanover)



Type 8
29 Mm Magenta
8 Feb 1952



Type 9
23 mm Black
International Machine
Type AT/S 2712
5 Apr 1962
May 1965



Type 11
23 mm Black
International Machine
Type ATS/z 2724 (28429)
6 Dec 1966
18 Nov 1975



Type 12
32.5 mm Black
1963 Type F/2 4-Bar (28429)
9 Apr 1968
22 Jun 1971

NEW HANOVER COUNTY

Castle Hayne, Castle (Cont.)

(New Hanover)



Type 13
32.5 mm Black
1963 Type F/2 4-Bar (28429)
20 Aug 1973
18 Nov 1975



Type 14
30 mm Magenta
18 Nov 1975



Type 15
35.5 mm Black
1963 Type F/2 4-Bar (28429)
27 Mar 1984



Type 16
35.5 mm Black
Self-Inking Postmarker (28429)
7 Aug 1996
20 Feb 2001



Type 17
30 mm Black
Self-Inking Postmarker (28429)
11 Sep 2006

NEW HANOVER COUNTY

Colvin's Creek

(New Hanover)

Joel L. Moore	16 Feb 1853
Discontinued	24 Mar 1855
Joel L. Moore	16 Jan 1857
Daniel McDuffie	28 Dec 1857
Daniel McDuffie, CSA	6 Jul 1861
CSA office closed on or before	30 Apr 1865
Alfred H. Padderson	29 May 1866
Thomas Rooks	25 Sep 1866
William B. Hunt	10 Jul 1867
John R. Paddison	19 Jan 1869
Name changed to Point Caswell	28 Mar 1870

Cypress Grove (1)

(New Hanover)

James O. Bowden	26 Dec 1849
Moved to Burgaw Depot	24 Jan 1854

Cypress Grove (2)

(New Hanover)

John N. Bowden	4 Sep 1855
Discontinued	2 Sep 1856

Doctor's Creek

(New Hanover)

James Stringfield	29 Jun 1857
Discontinued	21 May 1858

NEW HANOVER COUNTY

Dogwood Grove

(New Hanover)

John W. Cowan	20 Jun 1855
John W. Cowan, CSA	4 Jul 1861
CSA office closed on or before	30 Apr 1865
Federal office discontinued	5 Dec 1866

Federal

(New Hanover)

Stephen Keyes	1 Aug 1890
Discontinued	28 Sep 1891
Mail to Wilmington	

Federal Point

(New Hanover)

John Taylor	28 Dec 1882
Ambrose S. Loriner	16 Feb 1883
Discontinued	13 Jun 1883
Papers to Wilmington	

Fort Fisher, see Kure Beach

(New Hanover)

Miss Mitan or Mitson O. Saunders	19 Mar 1942
Appointment rescinded	8 May 1942

NEW HANOVER COUNTY

Harrell's Store

(New Hanover)

James Harrell	27 Jul 1837
Collin Lewis	22 Jan 1852
James L. Bland	26 Aug 1852
Ollen M. Lewis	4 Feb 1853
O. M. Lewis, CSA	5 Jul 1861
CSA office closed on or before	30 Apr 1865
Joseph W. Bland	9 Apr 1866
Algeron E. Colwell	10 Nov 1874
To Sampson County	16 Sep 1875

Confederate

Harrell's Store N.C.
July 19th

Manuscript
19 Jul 1861

Higgins' Mills

(New Hanover)

Postmaster unknown	by 1862
CSA office closed on or before	30 Apr 1865

Hilton, name changed from Lillington

(New Hanover)

William T. Newell, CSA	19 Jun 1862
CSA office closed on or before	30 Apr 1865

Confederate

Hilton N.C.
Sept, 11

Manuscript
11 Sep 1863

Kure Beach

(New Hanover)

Miss. Mitson or Mitan O. Saunders	8 May 1942
Mildred S. Bartlett, Acting	31 Aug 1961
Mildred S. Bartlett	12 Jul 1962
Faye H. Teague	21 Feb 1981
Delois Ingram Officer-In-Charge	26 Aug 1987
Patricia W. Compton	16 Jan 1988
Sonya W. Garner Officer-In-Charge	19 Feb 1997
George D. Young	8 Nov 1997
Gary E. Teague Officer-In-Charge	9 Mar 2001
Gary E. Teague	19 May 2001
Alice R. Coe	5 Feb 2005
Linda J. McGhee Officer-In-Charge	19 Oct 2006
Teresa A. Noles Officer-In-Charge	23 Jan 2007
Teresa A. Noles	4 Aug 2007



Type 1
34 mm Black
1936 Type F/1 4-Bar
29 Oct 1949
4 Nov 1951

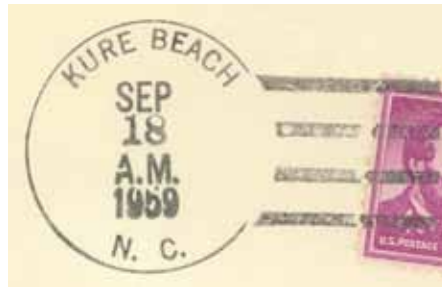
NEW HANOVER COUNTY

Kure Beach (Cont.)

(New Hanover)



Type 2
33 mm Black
1936 Type F/1 4-Bar
10 Nov 1954
28 Nov 1956



Type 3
33 mm Black
1936 Type F/1 4-Bar
16 Jun 1959
15 Jan 1965



Type 4
33 mm Black
1963 Type F/2 4-Bar (28449)
13 May 1967



Type 5
32 mm Black
1963 Type F/2 4-Bar (28449)
28 Mar 1969



Type 6
33 mm Black
1963 Type F/2 4-Bar (28449)
22 Feb 1971
14 Jul 1975

NEW HANOVER COUNTY

Kure Beach (Cont.)

(New Hanover)



Type 7
35.5 mm Black
1963 Type F/2 4-Bar (28449)
(killer appears to have broken off)
30 Jan 1978
3 Jun 1978



Type 8
34 mm Black
1963 Type F/2 4-Bar (28449)
11 May 1982



Type 9
37.5 mm Black
Self-Inking Postmarker (28449)
1 Nov 1994



Type 10
29.5 mm Red
Self-Inking Postmarker (28449)
7 Jul 1998



Type 11
32 mm Black
Self-Inking Postmarker (28449)
14 Nov 2000

NEW HANOVER COUNTY

Kure Beach (Cont.)

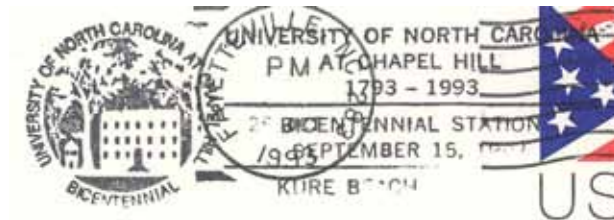
(New Hanover)



Type 12
31.5 mm Red
Self-Inking Postmarker (28449)
4 Dec 2006

Temporary Station Cancels

UNC Bicentennial Station



Type 1
76 x 24.5 mm Black
(28428)
15 Sep 1993

Lillington, name changed from Long Creek

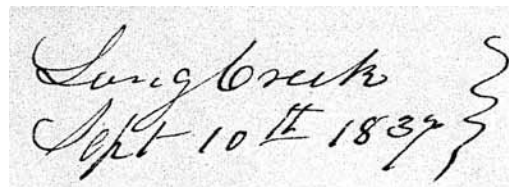
(New Hanover)

Evan L. Miller	26 Apr 1859
William T. Newell	6 Oct 1859
William T. Newell, CSA	16 Jul 1861
Name changed to Hilton	19 Jun 1862
Office re-established as Lillington	
J. A. Duponge	9 Apr 1866
William B. Larkins	1 Aug 1867
Discontinued	14 Sep 1868
Charles H. Manning	20 Sep 1869
William W. Myers	24 Jan 1870
Samuel H. Bell	24 Feb 1871
Name changed to Long Creek	19 Oct 1874

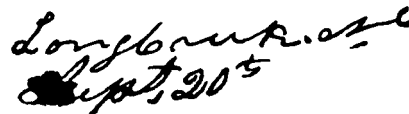
Long Creek Bridge, Long Creek

(New Hanover)

William H. Van	23 Dec 1825
Name changed to Long Creek	17 Oct 1828
John Larkin	17 Oct 1828
Discontinued	10 May 1833
Charles Montague	20 Sep 1833
Benjamin Larkins	29 Mar 1839
Samuel H. Bell	10 Jan 1842
John Jones	29 May 1856
Evan L. Miller	17 Jun 1856
Name changed to Lillington	26 Apr 1859
Name changed to Long Creek	
Samuel H. Bell	19 Oct 1874
To Pender County	16 Feb 1875



Manuscript
10 Sep 1937

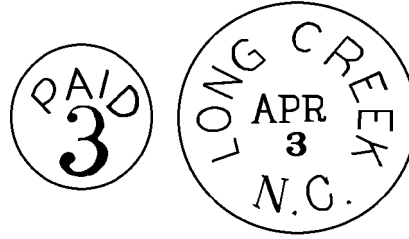


Manuscript
20 Sep 1849

NEW HANOVER COUNTY

Long Creek Bridge, Long Creek (Cont.)

(New Hanover)



Type 1
31 mm Black
5 Apr 1855
20 Aug 1858

Masonborough, Masonboro

(New Hanover)

Alonzo Hewlett 17 Jul 1890
Discontinued 28 Sep 1891
Papers to Wilmington

Moore's Creek

(New Hanover)

George W. McAlester 27 Jul 1837
Charles B. McAlester 29 Dec 1838
Isaac M. Alderman 1 May 1851
Owen Alderman 12 Jan 1858
CSA activity reported; postmaster unknown
CSA office closed on or before 30 Apr 1865
Federal office discontinued 11 Dec 1866
Samuel B. Rivenbark 10 Jun 1869
Robert T. Rivenbark 6 Aug 1873
To Pender County 16 Feb 1875

Moseley

(New Hanover)

Nicholas F. Nixon 11 Jun 1884
Discontinued 6 Mar 1885
Papers to Wilmington

NEW HANOVER COUNTY

Nonesta

(New Hanover)

Dallie Wadsworth	20 May 1930
H. B. Wadsworth, Sr., Acting	31 Oct 1930
Hiram B. Wadsworth	14 Jan 1931
Discontinued	15 Sep 1931
Mail to Wilmington	

Oakley

(New Hanover)

Samuel A. Howard	30 Apr 1859
Samuel A. Howard, CSA	6 Jul 1861
CSA office closed on or before	30 Apr 1865
Federal office discontinued	11 Dec 1866
Margaret M. Bethea	31 Aug 1869
Discontinued	26 Apr 1871

Confederate



Manuscript
15 Mar 1865

Pleasant District, name changed from Beatty's Bridge

(New Hanover)

Hays W. Beatty	15 Jan 1833
George W. Bonnerman	21 Aug 1840
Discontinued	28 Oct 1840

*Pleasant District R.,
Oct 14*

Manuscript
14 Oct 1839

Point Caswell, name changed from Colvin's Creek

(New Hanover)

John R. Peddison	28 Mar 1870
Discontinued	8 Aug 1870
Ludwig Vollers	7 Oct 1870
John R. Paddison	16 Apr 1874
To Pender County	16 Feb 1875

NEW HANOVER COUNTY

Rocky Point, name changed from Spring Garden

(New Hanover)

Samuel Berry	16 Apr 1860
CSA activity reported, postmaster unknown	
CSA office discontinued	3 Jan 1862
James H. Durham, Jr.	26 Mar 1866
Stephen F. Miller	23 Apr 1866
Samuel S. Berry	26 Jun 1866
James H. Durham	15 Feb 1867
Edgar H. McQuigg	25 Nov 1867
Everett T. Wood	19 Jan 1869
Discontinued	6 Jul 1869
Everet T. Wood	15 Jul 1869
Augustus Gemberg	7 Jan 1875
To Pender County	16 Feb 1875

Scott's Hill

(New Hanover)

Joseph M. Foy	15 Oct 1851
CSA activity reported, postmaster unknown	
CSA office closed	by Dec 1862
Federal office discontinued	11 Dec 1866

Sea Gate

(New Hanover)

Levina E. Rogers	28 Jun 1910
M. P. Harrell	26 Nov 1913
Levina E. Rogers	4 Mar 1918
Discontinued	15 Feb 1932
Mail to Wilmington	



Type 1
30 mm Black
1908 Type A/2 4-Bar
11 Mar 191x



Type 2
32 mm Black
1910 Type B 4-Bar
17 Aug 1915

NEW HANOVER COUNTY

Sea Gate (Cont.)

(New Hanover)



Type 3
32.5 mm Black
1924 Type D 4-Bar
15 Feb 1932

Sills Creek

(New Hanover)

Alexander Lamont	23 Oct 1844
John D. Powers	4 May 1848
Robert J. Johnson	23 Sep 1850
Discontinued	29 Sep 1851
John A. McInnis	20 Dec 1851
John E. Johnston	27 Jan 1853
J. E. Johnston, CSA	3 Jul 1861
A. D. McDonald, CSA	13 Aug 1861
CSA office closed on or before	30 Apr 1865
Federal office re-established	
Name changed to Camera	20 Oct 1865

*Sills Creek N.C.
May*

Manuscript
May 1853

Snug Haven

(New Hanover)

William O. Shepherd	2 Oct 1916
Discontinued	4 Nov 1920
Mildred R. Karnegay	5 Mar 1921
Discontinued	15 Mar 1922
Mail to Wilmington	



Type 1
32.5 mm Black
1910 Type B 4-Bar
17 Nov 1917

South Washington

(New Hanover)

John James	18 Dec 1794
Discontinued	by 1796
William Hall	by 1813
Charles W. Hooks	7 Oct 1820
William Usher	14 Nov 1823
George G. Doan	16 Nov 1825
Discontinued	ca. 1826
George H. McMillan	14 Apr 1830
Richard Saunders	10 Apr 1833
Dempsey Harrell	5 Oct 1838
Name changed to Washington Depot	16 Jun 1841

*So Washington
1 Feb 1834*

Manuscript
1 Feb 1834

NEW HANOVER COUNTY

South Washington (Cont.)

(New Hanover)

Name changed to **South Washington**

Rufus Garriss	27 Jul 1870
John Rivenbark	28 Jul 1873
To Pender County	16 Feb 1875

Spring Garden

(New Hanover)

Thomas W. Devane	8 Mar 1852
Anthony D. Bourdeaux	8 Sep 1853
James R. Bunting	30 Mar 1855
George I. Moore	15 Jun 1855
Hulda Moore	2 Oct 1858
David E. Bunting	7 Feb 1859
Hulda Moore	12 Mar 1859
Joel Hines	24 Dec 1859
Thomas Chatterton	24 Mar 1860
Discontinued	25 Jun 1860

Name changed to **Rocky Point**

Swirchback

(New Hanover)

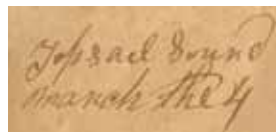
Cyrus S. Van Amringe	9 Jun 1890
Discontinued	15 Sep 1890

Papers to Wilmington

Topsail Sound

(New Hanover)

John Howard	10 May 1842
John Howard, CSA	6 Jul 1861
CSA office closed on or before	30 Apr 1865
Federal office discontinued	11 Dec 1866
Mary M. Burton	15 Jul 1869
Discontinued	27 Nov 1872
William H. King	23 Jun 1874
To Pender County	16 Feb 1875



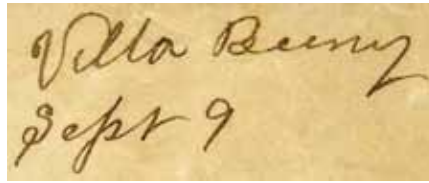
Manuscript
4 Mar 1856

NEW HANOVER COUNTY

Villa Bury

(New Hanover)

Samuel J. Bury 12 Feb 1862 Confederate
 CSA office closed on or before 30 Apr 1865



Manuscript
 9 Sep 186x

Washington Depot, name changed from South Washington

(New Hanover)

Charles S. Garriss 16 Jun 1841
 Discontinued 6 Jul 1844

Wrightsville

(New Hanover)

Kate W. Manning	6 Jul 1881
William H. Stokely	11 Apr 1898
James N. Gibbons	13 Feb 1903
Vance Norwood	26 Sep 1904
William G. Dizor	2 Dec 1905
Thomas McDonald	27 Dec 1906
Discontinued	15 Nov 1907
Arthur P. Southerland	2 Sep 1908
Katherine Ray	11 Jun 1909
Discontinued	15 Nov 1909
Horace C. Johnson	6 Oct 1941
Mrs. Thurber G. Dickinson, Acting	1 Apr 1945
Mrs. Thurber G. Dickinson	2 Aug 1946
Ennis T. Robinson, Acting	30 Jun 1958
Walker T. Brown, Acting	31 Mar 1961
Walker T. Brown	24 Jul 1961
George D. Young	13 Dec 1980
Patricia Franklin Officer-In-Charge	15 Aug 1986
Eddie E. Long	20 Dec 1986
Rosemary Kenney Officer-In-Charge	12 Oct 1990
Robert L. Burkhart	4 May 1991
Darlene M. Parrow Officer-In-Charge	1 Oct 1992
Darlene M. Parrow	20 Feb 1993
Phoebe R. Jordan Officer-In-Charge	1 Aug 2001
Brenda C. Morton	17 Nov 2001
Luther B. Black Jr.	5 Feb 2005
Dora M. Gaudin Officer-In-Charge	23 Nov 2005
Teresa A. Noles Officer-In-Charge	27 Jan 2006



Type 1
 27.5 mm Black
 14 Sep 1891



Type 1
 20.5 mm Black
 Universal Machine
 Type DT 200K
 8 Jul 1944
 7 May 1957

NEW HANOVER COUNTY

Wrightsville Beach

(New Hanover)

Icchie Walden Officer-In-Charge	10 Jan 2007
Michael G. Smithe Officer-In-Charge	18 Sep 2007
Linda C. Gordon Officer-In-Charge	30 Jan 2008
Terry D. Rockwell	5 Jul 2008
Rebecca Duncam Officer-In-Charge	16 Sep 2014
Virginia Hayes Officer-In-Charge	27 Mar 2015
Cynthia A. Horger	18 Apr 2015
Kathy Hodges Officer-In-Charge	
Rebecca Helms Officer-In-Charge	20 Aug 2018
Terry D. Rockwell Officer-In-Charge	10 Oct 2018
Terry D. Rockwell	10 Nov 2018



Type 2
31.5 mm Black
31 Jul 194x



Type 3
21.5 mm Black
International Machine
Type J30
22 Sep 1960
27 Jan 1965



Type 4
21.5 mm Black
International Machine
Type Hz30 (28480) ("BEACH")
3 Jan 1966
14 Oct 1968



Type 5
21 mm Black
International Machine
Type Hz30 (28480) ("BCH")
8 Jan 1970
15 Jul 1975

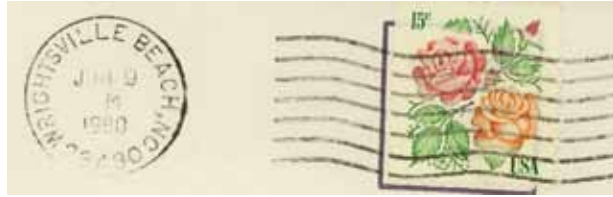


Type 6
32.5 mm Black
1963 Type F/2 4-Bar (28480)
14 Apr 1971

NEW HANOVER COUNTY

Wrightsville Beach (Cont.)

(New Hanover)



Type 7
21.5 mm Black
International Machine
Type Hz30 (28480) ("BEACH")
9 Jan 1976
10 Mar 1982



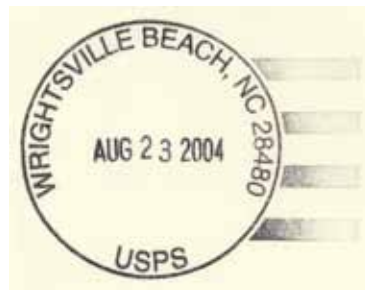
Type 8
31 mm Black
1963 Type F/2 4-Bar (28480)
13 Mar 1990



Type 9
33.5 mm Black
Self-Inking Postmarker
Type 3A (28480)
7 Apr 1994



Type 10
31 mm Red
Self-Inking Postmarker (28480)
22 Jan 2001



Type 11
34.5 mm Black
Self-Inking Postmarker (28480)
23 Aug 2004
20 Aug 2007

NEW HANOVER COUNTY

Wrightsville Beach (Cont.)

(New Hanover)

M.O.B.
(Money Order Business)



Type 1
29.5 mm Magenta
19 Jun 1951

Wrightsville Sound

(New Hanover)

Evelyn B. Hall	23 Apr 1923
Ida M. Benson	31 Dec 1923
Florence R. Hanby	9 Mar 1925
Mamie J. Fennell	31 Aug 1950
Frank A. Montgomery, Acting	8 Mar 1952
Frank A. Montgomery	8 Apr 1952
Constance S. Taylor, Acting	7 Jul 1954
Discontinued	30 Apr 1955
Mail to Wilmington	



Type 1
32 mm Black
1930 Type E 4-Bar
22 May 193x



Type 2
32.5 mm Black
1936 Type F/1 4-Bar
5 Aug 1946
22 Jun 1950



Type 3
33.5 mm Black
1936 Type F/1 4-Bar
20 Oct 195x
23 Feb 1952

NEW HANOVER COUNTY

Wrightsville Sound

(New Hanover)



Type 4
33.5 mm Black
1936 Type F/1 4-Bar
10 Dec 1954
30 Apr 1955