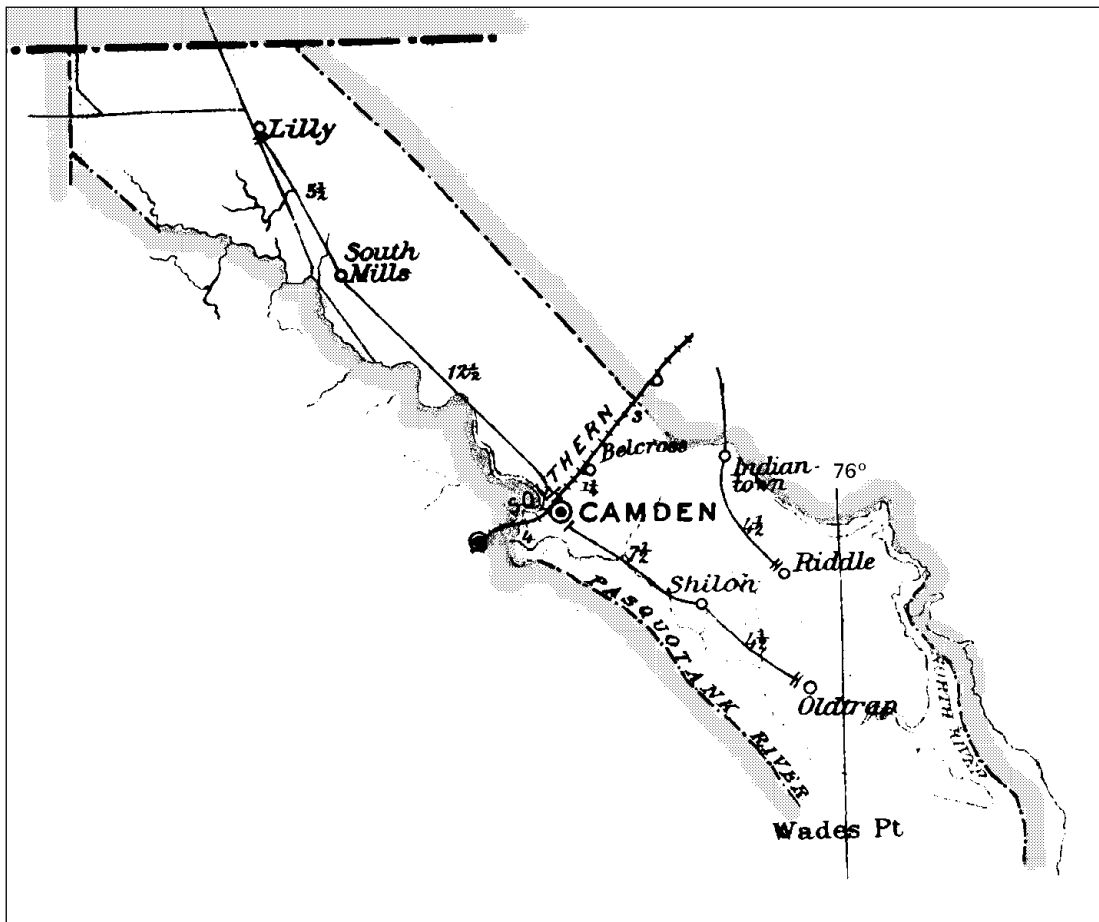


CAMDEN COUNTY

Established 1777
From Pasquotank County

Number of Post Offices - 17
Number with postmarks known - 10

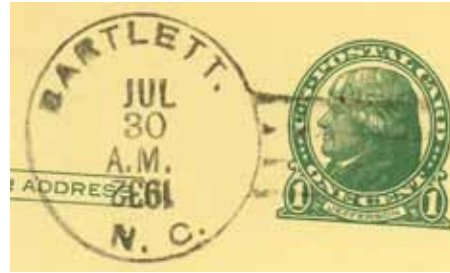


CAMDEN COUNTY

Bartlett

(Camden)

Thomas F. Bartlett	15 Nov 1907
Sallie Frias	19 Feb 1913
Henry F. Bartlett	8 Jan 1916
Discontinued	31 Jul 1932
Mail to Camden	

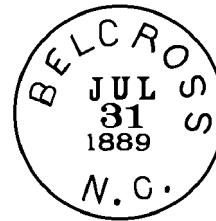


Type 1
31 mm Black
1923 Type A/3 4-Bar
30 Jul 1932

Belcross

(Camden)

Wiley G. Ferbee	29 Jun 1882
Blanche B. Ferbee	5 Dec 1895
Blanche B. Sawyer	14 Apr 1913
Hilton T. Crawley, Acting	29 Sep 1923
Hilton T. Crawley	22 Jan 1924
Thomas G. Williams, Acting	19 Nov 1934
Mary F. Holloman	7 Mar 1935
Stella B. Staples, Acting	1 Aug 1947
Stella B. Staples	23 Jul 1948
Martha S. Seymour, Acting	30 Apr 1968
Martha S. Seymour	17 Jan 1969
John D. Sanderlin, Officer-In-Charge	8 Feb 1973
Discontinued	12 Apr 1974
Mail to Camden	



Type 1
27 mm Black
31 Jul 1889
4 Apr 1900



Type 2
29 mm Black
Metal Duplex Type H2
26 Nov 1909



Type 3
32 mm Black
1910 Type B 4-Bar
1 Feb 1917

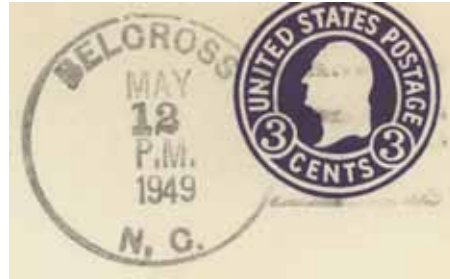


Type 4
32.5 mm Black
1925 Type C/1 4-Bar
14 Mar 1935

CAMDEN COUNTY

Belcross (Cont.)

(Camden)



Type 5
34 mm Black
1936 Type F/1 4-Bar
22 Jan 1949
12 May 1949



Type 6
32.5 mm Black
1936 Type F/1 4-Bar
28 Sep 1951
23 Feb 1952



Type 7
33.5 mm Black
1936 Type F/1 4-Bar
25 May 1955
20 Feb 1957



Type 8
30 mm Magenta
24 Nov 1951
15 Apr 1957



Type 9
33 mm Black
1936 Type F/1 4-Bar
6 Aug 1959
9 Mar 1960

CAMDEN COUNTY

Belcross (Cont.)

(Camden)



Type 10
33 mm Black
1963 Type F/2 4-Bar (27918)
7 Apr 1969
17 Nov 1970



Type 11
36 mm Black
1963 Type F/2 4-Bar (27918)
8 May 1972

Borum

(Camden)

Lemuel M. Sawyer 14 Mar 1894
Discontinued 27 Aug 1898
Papers to Camden

Bray

(Camden)

Dempsey G. Bray 1 Aug 1884
Discontinued 8 Jan 1887
Papers to Old Trap

CAMDEN COUNTY

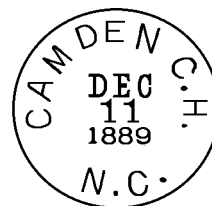
Camden C.H., Camden, name changed from Jonesburg

(Camden)

<i>Cover known</i>	1802
Alexander Gordon	8 Feb 1826
M. W. Boushall	23 Feb 1827
Bowden Killum	13 Mar 1827
Joseph Dozier	25 Dec 1829
<i>Listed without "C.H."</i>	
Tully B. Dozier	24 May 1831
Thomas Dozier	12 Jan 1832
Listed as Camden C.H	1833
Thomas Gordon	21 Mar 1834
James M. White	4 Nov 1834
Barney Bowers	29 Aug 1835
Willis Dozier	1 Sep 1836
Samuel O. Gordon	9 May 1837
John L. Ferrill	6 Jan 1840
Samuel D. Lamb	21 Oct 1842
Listed in POD records as Camden	1845-75
Willis Dozier	26 Aug 1845
George W. Gordon	22 Dec 1845
Willis Etheredge	11 Jul 1846
Discontinued	19 Oct 1846
William J. Morrisett	12 Apr 1847
Joseph A. Spencer	26 Apr 1850
Abner Dozier	21 Dec 1852
William J. Morrisett	9 Jan 1857
Discontinued	31 Dec 1859
Edwin Ferbee	3 Apr 1860
CSA postmaster unknown	
CSA office closed on or before	30 Apr 1865
Edwin W. Morse	3 Dec 1866
William J. Morrisett	22 Oct 1868
Thomas B. Bonshall	5 Jun 1875
William J. Morrisett	12 Jan 1876
Listed in POD records as Camden C.H.	
Titus B. Knight	31 Jan 1876
Milton M. Burfoot	10 Oct 1877
Charles R. Nash	27 Nov 1878
Alpheus Fenahaw	15 Sep 1881
John M. Burfoot	13 Dec 1883
Noah Burfoot	23 Dec 1885
Charles R. Nash	23 Aug 1889
Timothy C. McCoy	23 Sep 1891
Name changed to Camden	23 Mar 1892
Benjamin F. Gilbert	23 Mar 1892
Coston S. Sawyer	22 Jun 1893
Clara S. Sawyer	8 Apr 1920
John W. Burfoot	28 Sep 1920
Louis L. Berry	25 Jun 1921
Malachi D. Stevens, Acting	24 Mar 1922
Malachi D. Stevens	20 Apr 1922
Freshwater P. Wood, Acting	5 Feb 1929
Freshwater P. Wood	17 Jun 1929
Sallie O. Tarkington, Acting	1 Jan 1938
Sallie O. Tarkington	17 May 1938
Pearl F. Godfrey, Acting	31 Jul 1953

Camden C.H. No Manuscript
2 Jul 1841

Camden N.C. Manuscript
15 Nov 1844
10 Aug 1860



Type 1
27.5 mm Black
11 Dec 1889



Type 2
27.5 mm Black
12 Nov 1898
6 Dec 1904



Type 3
31.5 mm Black
1906 Type A/1 4-Bar
30 Mar 1907
4 Feb 1910



Type 4
31 mm Black
1910 Type B 4-Bar
4 Apr 1911
9 Jan 1914

CAMDEN COUNTY

Camden C.H., Camden (Cont.)

(Camden)

Polly L. Bartlett	9 Feb 1954
Jack O. Horton Officer-In-Charge	20 Apr 1979
Mrs. Marguerite P. Sawyer	28 Jul 1979
Gail Carter Spence Officer-In-Charge	29 Sep 1992
Dorothy Sue Mathews	26 Jun 1993
Bonnie L. Maynard Officer-In-Charge	9 Sep 1997
Ricky L. Hill Officer-In-Charge	14 Jan 1998
Diana V. Meads	7 Nov 1998
Dianne C. Lindsey Officer-In-Charge	16 Jan 2003
Billie B. Simkins Officer-In-Charge	3 Mar 2004
Billie B. Simkins	17 Apr 2004
Sandra L. Powers Officer-In-Charge	16 Jul 2012
Sandra L. Powers	6 Oct 2012

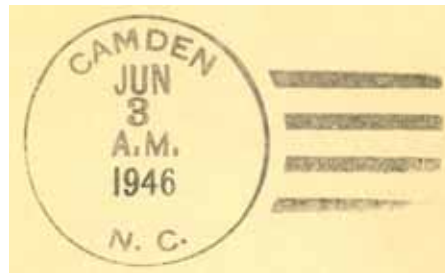


Type 5
 31 mm Black
 1910 Type B 4-Bar
 18 May 1916

 31 mm Purple
 8 Aug 1916



Type 6
 30 mm Black
 1930 Type E 4-Bar
 23 Dec 1934
 28 Jan 1937



Type 7
 32 mm Black
 1936 Type F/1 4-Bar
 3 Jun 1946
 16 Aug 1961



Type 8
 34 mm Black
 1936 Type F/1 4-Bar
 6 Jan 1950
 26 May 1952

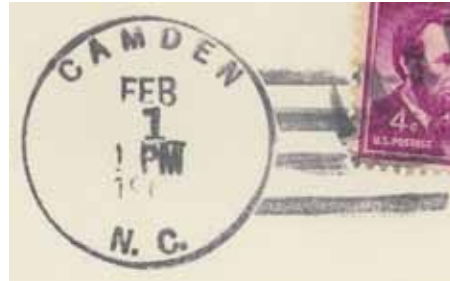


Type 9
 33 mm Black
 1936 Type F/1 4-Bar
 1 Dec 1956
 6 Sep 1963

CAMDEN COUNTY

Camden C.H., Camden (Cont.)

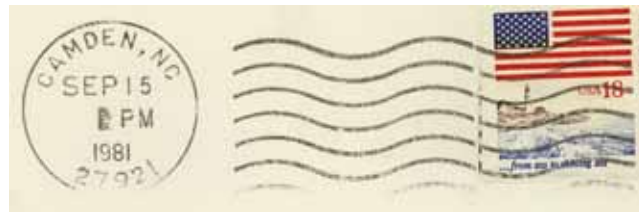
(Camden)



Type 10
33.5 mm Black
1936 Type F/1 4-Bar
1 Feb 196x



Type 11
32 mm Black
1963 Type F/2 4-Bar (27921)
28 Mar 1967
11 May 1979



Type 12
23 mm Black
International Machine
Type ATSz 2723 (27921)
15 Sep 1981



Type 13
32 mm Black
1963 Type F/2 4-Bar
4 Nov 1985



Type 14
30.5 mm Black
Self-Inking Postmarker
Type 1A (27921-9998)
8 Feb 1990

CAMDEN COUNTY

Camden C.H., Camden (Cont.)

(Camden)



Type 15
23 mm Black
International Machine
Type ATSz 2721 (27921)
26 Dec 1991



Type 16
31.5 mm Black
Self-Inking Postmarker
Type 1A (27921-9998)
2 Jun 1993
16 May 1995



Type 17
27.5 mm Red
Self-Inking Postmarker
(27921-9998)
2 Jun 1993



Type 18
31 mm Red
Self-Inking Postmarker (27921)
14 Mar 2000



Type 19
33.5 mm Black
Self-Inking Postmarker (27921)
18 Sep 2006

CAMDEN COUNTY

Cross Canal

(Camden)

William Ferrange	12 Mar 1825
Discontinued	23 Jun 1837
Burwell Duke	22 Aug 1877
Discontinued	15 Sep 1880

Geneva

(Camden)

Jerome B. Cox	23 Aug 1883
Discontinued	12 Oct 1886
Papers to South Mills	

Indian Town, from Currituck County

(Camden)

Samuel S. Leary	1 Feb 1882
Augustus Dough	21 May 1885
John T. Duncan	22 Sep 1886
John D. Gregory	6 Jan 1888
Gideon C. Walker	22 Oct 1904
Charles T. Dough	11 Dec 1908
Teanie Forbes	31 Jan 1914
Discontinued	15 May 1934
Mail to Shawboro, Currituck County	



Type 1
29 mm Black
10 Feb 1892
27 Sep 1904



Type 2
33.5 mm Black
1925 Type C/1 4-Bar
15 May 1934

CAMDEN COUNTY

Jonesburg

(Camden)

Josiah Jones	13 Oct 1797
Patrick Garvey	16 Apr 1798
Thomas H. Harris	ca 1 Jan 1806
Thomas Bell	1 Oct 1806
Caleb B. Nash	27 Aug 1810
D. S. Burgess	by 1816
Thomas Gordon	1 Oct 1816
Alexander Gordon	30 Sep 1822
Caleb C. Houser or Homer	1823
Caleb C. Houser or Homer	Failed to bond
Alexander Gordon continued	1823
Name changed to Camden C.H.	8 Feb 1826

Lilly

(Camden)

Burwell Duke	23 Oct 1880
Willoughby Lynch	30 Jan 1882
Alfred Nosay	27 Feb 1902
Discontinued	30 Dec 1916
Mail to South Mills	



Type 1
27 mm Black
16 Mar 1909

New Lebanon

(Camden)

Abner Whitney	2 Oct 1797
Thomas Gordon	21 May 1800
Post road discontinued by Congress	1801
Re-established as a private office	
Thomas Gordon	1 May 1802
Post road re-established	ca Oct 1802
George Ferebee	16 May 1816
Littleton Savage	7 Aug 1827
George Ferebee	7 Mar 1831
<i>Reported as county seat</i>	<i>1831</i>
William S. Hinton	8 Mar 1832
Samuel H. Hinton	18 Aug 1837
Lewis R. Hinton	20 Sep 1838
To Pasquotank County	21 May 1839

New Lebanon N.C.

Manuscript
10 Aug 1824
25 Dec 183x

CAMDEN COUNTY

New Mills

(Camden)

Henry D. Kipps 26 Oct 1877
 Discontinued 3 Jun 1880

Old Trap

(Camden)

James E. Burgess 5 Oct 1882
 Edmund Mitchell 10 Nov 1896
 Willie H. Burgess 25 May 1914
 Florrie L. Burgess, Acting 23 May 1956
 Florrie L. Burgess 30 Nov 1956
 Mrs. Irdell Pugh Officer-In-Charge 27 Oct 1972
 Discontinued 19 Jan 1973
 Mail to Shiloh



Type 1
 27.5 mm Blue
 27 Mar 1890
 17 Sep 1891



Type 2
 28.5 mm Black
 2 Apr 1906



Type 3
 32 mm Black
 1908 Type A/2 4-Bar
 5 Feb 1910
 13 Apr 1911



Type 4
 32 mm Black
 1930 Type E 4-Bar
 1 Feb 1936
 25 Feb 1936

CAMDEN COUNTY

Old Trap (Cont.)

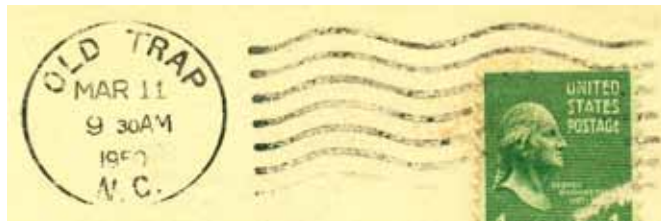
(Camden)



Type 5
33 mm Black
1931 Type C/2 4-Bar
14 Jan 1938
12 Nov 1945



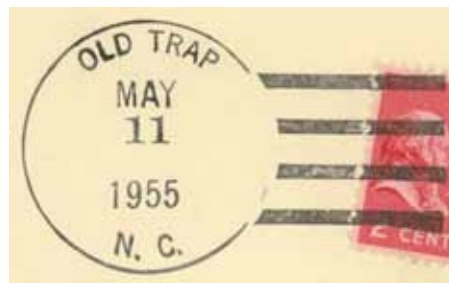
Type 6
32.5 mm Black
1936 Type F/1 4-Bar
5 May 1947
28 Sep 1950



Type 7
25.5 mm Black
Columbia-Ielfield Machine
Type A2
6 Jan 1948
11 Apr 1950



Type 8
29.5 mm Magenta
20 Sep 1949
26 Feb 1951



Type 9
33 mm Black
1936 Type F/1 4-Bar
11 May 1955
8 Aug 1963

CAMDEN COUNTY

Old Trap (Cont.)

(Camden)



Type 10
32.5 mm Black
1963 Type F/2 4-Bar (27961)
24 Jan 1967
28 Jun 1967



Type 11
32.5 mm Black
1963 Type F/2 4-Bar (27961)
15 Jul 1969
17 Jan 1970

Riddle

(Camden)

Cornelius F. Forkrey	3 Mar 1893
Grandy Gallop	18 Mar 1898
Wilson D. Riggs	20 May 1901
Mathias J. Seymour	19 Jan 1903
Jacob F. Forbes	17 May 1909
James A. Henry	16 Oct 1912
Haywood F. Forbes	20 Feb 1919
Milton G. Forbes	14 Dec 1920
William G. Mercer, Acting	12 Jan 1926
William G. Mercer	4 May 1926
William G. Bray, Acting	26 May 1927
William G. Bray	2 Jun 1927
Ethel A. Staples, Acting	21 Jun 1934
Ethel A. Staples	17 Aug 1934
Haywood F. Forbes, Sr., Acting	1 Sep 1936
Haywood F. Forbes, Sr.	23 Sep 1936
William G. Bray, Acting	20 Aug 1938
Discontinued	31 Jan 1939
Mail to Shawboro, Currituck County	



Type 1
28 mm Black
9 Mar 1897



Type 2
29 mm Black
Doane Type 2-?
22 Sep 1911
30 Dec 1911

Shiloh, Shiloh

(Camden)

Peter Elliott	14 Feb 1826
Discontinued	16 Jan 1829
Ambrose Walston	30 Nov 1830
Charles Taylor	24 Nov 1834
William J. Morrisett	12 Aug 1845
Nicholas S. Burgess	22 Jan 1847
Thomas Garrett	22 Oct 1853

Shiloh, N.C.

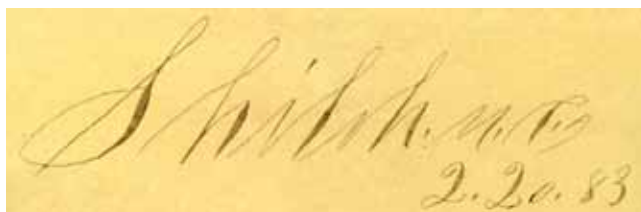
Manuscript
12 Jan 1844

CAMDEN COUNTY

Shiloh, Shiloh (Cont.)

(Camden)

Jonathan B. Tillitt	3 Nov 1854
Malachi J. Morrisett	22 Jan 1855
Discontinued	29 Jul 1859
Nicholas S. Burgess	31 Dec 1859
Dempsey B. Cartwright	30 Mar 1861
No record of CSA operation	
Federal office discontinued	11 Dec 1866
Elizabeth Bray	2 Sep 1868
Lydia Seymour	10 Feb 1870
Jerome B. Flora	11 Jan 1871
James F. Garrenton	21 Apr 1873
Thomas J. Duke	26 Jun 1874
Luther A. Jordan	21 Oct 1878
Nathan G. Grandy	2 Oct 1879
James E. Duke	28 Aug 1885
Benjamin F. Duncan	26 May 1886
Joseph H. Morrisette	13 Jan 1887
Luther A. Jordan	21 Jul 1892
William N. Gregory	29 Jun 1899
Walter G. Wright	3 Apr 1902
Samuel W. Gregory	12 Jan 1915
Milton N. Toxey, Acting	18 Jul 1922
Milton N. Toxey	5 Sep 1922
Samuel W. Gregory, Acting	17 Nov 1933
Samuel W. Gregory	5 Feb 1934
June B. Forehand, Acting	30 Sep 1960
Doris Staples McMullen, Acting	12 May 1961
Doris Staples McMullen	17 Nov 1961
Carolyn M. Riggs Officer-In-Charge	6 Feb 1989
Elaine Guard Officer-In-Charge	25 Jul 1989
Carolyn M. Riggs	5 May 1990
Linda Rull Officer-In-Charge	1 Nov 2000
Dianne C. Lindsey	13 Jan 2001
Linda Wood Officer-In-Charge	2 May 2005
Lonnie P. Christiansen	3 Sep 2005
Converted to Remotely Managed Post Office of Camden	4 May 2013



Manuscript
20 Feb 1883



Type 1
23.5 mm Black
2 Mar 187x



Type 2
33.5 mm Purple
22 May 1884
17 Oct 1884



Type 3
27.5 mm Black
8 May 1890



Type 4
32.5 mm Black
1910 Type B 4-Bar
2 Oct 1915

CAMDEN COUNTY

Shiloah, Shiloh (Cont.)

(Camden)



Type 5
33 mm Black
1936 Type F/1 4-Bar
26 Dec 1938
2 Jun 1945



Type 6
32.5 mm Black
1936 Type F/1 4-Bar
10 Mar 1950
9 Jan 1953



Type 7
31.5 mm Black
1936 Type F/1 4-Bar
23 Apr 1955
8 Jul 1961



Type 8
33 mm Black
1936 Type F/1 4-Bar
23 Apr 1955
13 Jul 1964



Type 9
33.5 mm Black
1963 Type F/2 4-Bar (27974)
25 Apr 1966
31 Dec 1988

CAMDEN COUNTY

Shiloh, Shiloh (Cont.)

(Camden)



Type 10
33 mm Black
1963 Type F/2 4-Bar (27974)
11 Sep 1989
13 Apr 1992



Type 11
29 mm Magenta
1 Dec 2000
6 Mar 2007



Type 12
33 mm Black
1963 Type F/2 4-Bar (27974)
1 Dec 2000

Ship Yard

(Camden)

James E. Gregory	23 Jun 1873
Discontinued	5 Jan 1874
C. G. Spence	10 Apr 1874
James E. Gregory	10 Sep 1875
Tilmon F. Midgett	23 Sep 1878
Obania G. Midgett	12 Dec 1879
John A. Bartlett	3 Jan 1883
Discontinued	13 Aug 1883
Mail to Camden C.H	

CAMDEN COUNTY

South Mills

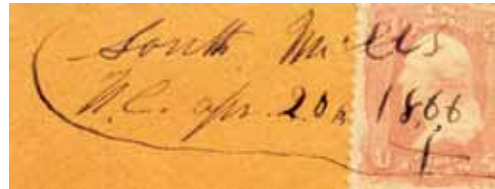
(Camden)

Marshall Parks	2 Mar 1840
Willis Powers	9 Apr 1841
Matchett Taylor	23 Mar 1842
Samuel J. Proctor	6 Oct 1843
William Old	31 Oct 1845
Alexander Henderson	1 Jun 1853
William Pritchard	5 Jan 1854
Addison P. Cherry	22 Jan 1855
Benjamin Burnham	9 Oct 1855
Benjamin Knight	21 Apr 1858
John Jacobs	8 Nov 1860
John Jacobs, CSA	1 Aug 1861
CSA office closed on or before	30 Apr 1865
Henrietta Jacobs	16 Feb 1866
John O. Kelly	18 May 1869
Mary J. Felton	8 Mar 1880
Mary Anie Taylor	20 Jun 1881
William Henry Voight	17 Jan 1883
William M. Hinton	17 Apr 1883
Malachi M. Burnham	15 Apr 1889
George F. Spencer	17 Jun 1893
Wilson Sawyer	2 Oct 1897
William R. Dozier	3 Aug 1899
Bessie Granger	12 Jan 1915
Bernice W. Johnson	1 Dec 1945
Lillian B. Spencer, Acting	24 Apr 1954
Lillian B. Spencer	28 Jul 1954
Mrs. Effie M. Harris Officer-In-Charge	29 Sep 1972
Mrs. Ruth B. Walker Officer-In-Charge	29 Dec 1972
Mrs. Ruth B. Walker	12 May 1973
Mrs. Ruth B. Crain (marriage)	
Charles E. Spruill Officer-In-Charge	1 Jul 1987
Patricia W. Smith	10 Oct 1987
Bill Boncek Officer-In-Charge	3 Jan 1989
Lucy Vaughan Officer-In-Charge	1 Mar 1989
Billie (J.) Burgess Stewart	29 Jul 1989
Sandra L. Powers Officer-In-Charge	25 Feb 1993
Daniel C. Moody	24 Jul 1993
Billie Simpkins Officer-In-Charge	5 Jan 2003
Sandra Powers Officer-In-Charge	3 Mar 2004
Johnny M. Trahan	13 Nov 2004
Peggy Compton Officer-In-Charge	25 Mar 2009
Sandra Cox-Davis Officer-In-Charge	
Lucy G. Beamon	30 Jun 2012
Zachary N. Ward	11 Nov 2017
John S. Deboer	5 Jan 2019

*South Mills notes
Aug 16th 1844*

Manuscript
16 Aug 1844
20 Jul 1846

Reconstruction



Manuscript
20 Apr 1866
29 Mar 1867

*So. Mills N.C.
42 of 85*

Manuscript
3 Jan 1884
20 Jan 1885



Type 1
27 mm Black
19 Sep 1889
10 Mar 1891



Type 2
29.5 mm Black
21 Dec 1901



Type 3
30 mm Black
Metal Duplex Type H
8 Sep 1902
6 May 1911

CAMDEN COUNTY

South Mills (Cont.)

(Camden)



Type 4
33 mm Black
1910 Type B 4-Bar
24 Apr 1913
7 Oct 1920



Type 5
34 mm Black
1924 Type D 4-Bar
25 Mar 1929



Type 6
33.5 mm Purple
1925 Type C/1 4-Bar
5 Feb 1930

33.5 mm Black
1 Oct 1934



Type 7
33 mm Black
1936 Type F/1 4-Bar
13 Apr 1939



Type 8
34 mm Black
1936 Type F/1 4-Bar
14 Sep 1948

CAMDEN COUNTY

South Mills (Cont.)

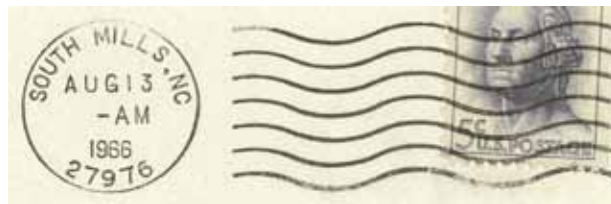
(Camden)



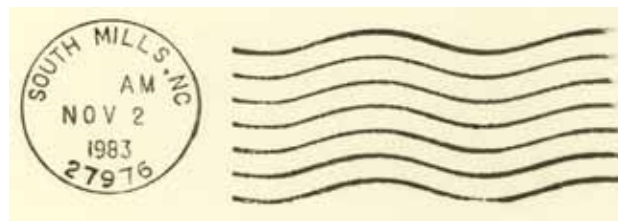
Type 9
33 mm Black
1936 Type F/1 4-Bar
12 Aug 1953
19 May 1954



Type 10
30.5 mm Black
Metal Duplex Type ?
25 Sep 1956
12 Nov 1963



Type 11
23 mm Black
International Machine
Type ATS/z 2723 (27976)
13 Aug 1966
5 Mar 1976



Type 12
23 mm Black
International Machine
Type ATS/z 2712 (27976)
13 Oct 1976
1 May 1992



Type 13
37 mm Black
Non-standard 4-Bar
(27976)
21 Oct 1970

CAMDEN COUNTY

South Mills (Cont.)

(Camden)



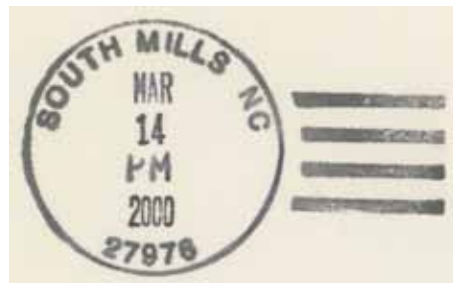
Type 14
32.5 mm Black
1963 Type F/2 4-Bar (27976)
21 Oct 1970
3 May 1981



Type 15
32 mm Black
Self-Inking Postmarker (27976)
Type 1A
9 Jul 1987



Type 16
32 mm Black
1963 Type F/2 4-Bar (27976)
31 Jul 1992



Type 17
34 mm Black
Self-Inking Postmarker
Type 2A (27976)
9 Feb 1998
14 Mar 2000



Type 18
31 mm Red
Self-Inking Postmarker (27976)
9 Mar 2007

CAMDEN COUNTY

South Mills (Cont.)

(Camden)

Receiving datestamp



Type R1
29.5 mm Black
9 May 1899
29 Nov 1907

M.O.B.
(Money Order Business)



Type 1
32 mm Purple
3 Dec 1914