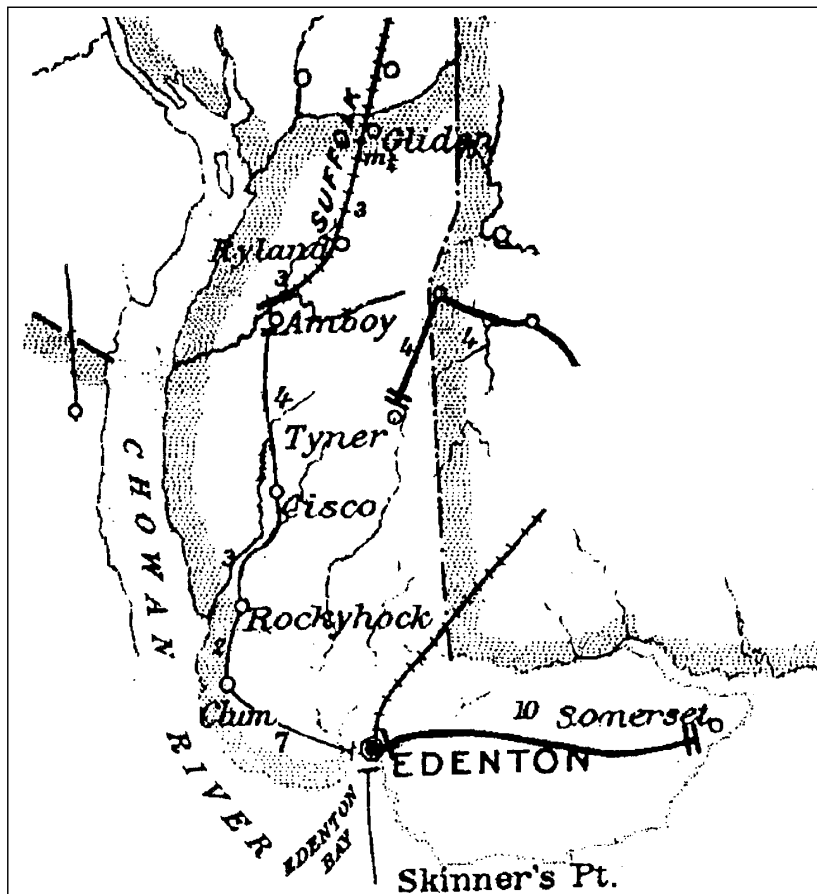


CHOWAN COUNTY

Established 1670
From Albemarle County

Number of Post Offices - 21
Number with postmarks known - 13



CHOWAN COUNTY

Amby

(Chowan)

John W. Howell	9 Jun 1880
W. H. Elliott	12 Jul 1883
William H. Elliott, Jr.	31 Jul 1883
Discontinued	1904
Papers to Ryland	

Ballard's Bridge

(Chowan)

Ephraim Elliott	7 Feb 1825
William Elliott	26 Mar 1831
William R. Blanchard	11 Jun 1834
John W. Skinner	8 Mar 1837
Stephen Dolby	20 Feb 1838
Allen Small	16 Sep 1841
George M. Williams	19 Aug 1846
Thomas Cochran	9 Jul 1847
Discontinued	8 Dec 1847
Richard Woodard	20 Jan 1848

A snippet of a handwritten manuscript in cursive, showing the text "Ballards Bridge N.C." followed by "Jun 16th 1833".

Manuscript
1 May 1833
16 Jun 1837

A snippet of a handwritten manuscript in cursive, showing the text "Ballards Bridge N.C." followed by "Jan 30th 1850" and "Paid 6/4".

William B. Harrell	22 Feb 1850
Joseph T. Morris	5 Jul 1850
Thomas Cochran	29 Aug 1851
Joseph T. Waff	29 Sep 1851
Thomas Cochran Jr.	21 Dec 1852
Richard D. Simpson	27 Oct 1853
Thomas Evans	5 Jan 1854
John W. Nowell	13 Sep 1859
John H. Garrett	12 Mar 1861
No record of CSA operation	
Federal office discontinued	6 Dec 1866

Manuscript
22 Jan 184x

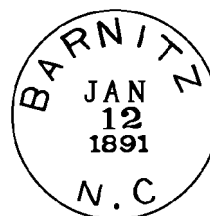
A snippet of a handwritten manuscript in cursive, showing the text "Ballards Bridge N.C." followed by "March the 16th 1859".

Manuscript
16 Mar 1859

Barnitz

(Chowan)

Augustus Holly, Jr.	2 Jan 1880
Richard Elliott	10 Jan 1891
Joseph A. Byrum	25 Jun 1892
Joseph C. Saunders	22 Jun 1893
Discontinued	22 Jun 1894
Mail to Cisco	



Type 1
27 mm Black
12 Jan 1891

CHOWAN COUNTY

Chowan

(Chowan)

William T. Woodley 9 Apr 1880
Name changed to **Woodley** 27 Nov 1888
Re-established 22 Jun 1904
Edward T. Forehand 22 Jun 1904
Discontinued 30 Mar 1907
Mail to Tyner

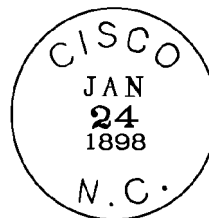


Type 1
28.5 mm Black
Doane Type 2-?
30 May 1905

Cisco

(Chowan)

Zachariah W. Evans 28 Apr 1891
Discontinued 30 Mar 1907
Mail to Tyner



Type 1
27.5 mm Black
20 Mar 1897
24 Aug 1900

Clum

(Chowan)

James P. Ashley 23 Dec 1897
Discontinued 31 Oct 1902
Mail to Edenton

Dwight, from Perquimans County

(Chowan)

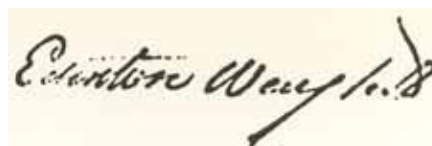
Hosea J. Lane 20 Sep 1904
Lizzie Lane 16 Mar 1906
Discontinued 27 Feb 1909

CHOWAN COUNTY

Edenton

(Chowan)

Joseph Hewes	1770-1776
William Gardiner	19 Jan 1776
Chas Bonfield	26 Dec 1777
John Mare	5 Apr 1783
Lemuel Standin	5 Aug 1786
Henderson Standin	16 Jan 1797
Henry Willis	9 May 1816
Henry Willis, Jr.	5 Apr 1817
Nathaniel Bruer	17 May 1822
Joseph N. Hoskins	20 Sep 1833
Theoderick I. Bland	15 Nov 1838
William R. Skinner	11 Feb 1846
Joseph S. Jones	11 May 1849
Joseph T. Waff	29 Sep 1851
James M. Floyd	23 Jun 1853
John C. Fleetwood	11 Dec 1855
J. C. Fleetwood, CSA	4 Jul 1861
CSA office closed on or before	30 Apr 1865
John R. McCurdy	11 Oct 1865
William E. Bond	14 Jul 1879
Oliver T. Gilbert	23 May 1881
George W. Lane	7 Aug 1881
Noah Burfoot	30 Jan 1885
Leroy L. Brinkley	24 Feb 1885
William J. Leary Sr.	14 Mar 1907
Millard F. Bond	4 Mar 1916
Miles S. Elliott, Acting	1 Jul 1924
Miles S. Elliott	11 Feb 1925
Carroll E. Kramer, Acting	18 Dec 1933
Carroll E. Kramer	31 Jan 1934
Richard D. Dixon, Sr., Acting	11 Dec 1950
Richard D. Dixon, Sr.	12 Oct 1951
David Q. Holton, Acting	31 Aug 1952
James L. Chestnut, Acting	22 Nov 1953
James L. Chestnut	23 Mar 1955
James M. Bond, Acting	30 Dec 1965
James M. Bond	21 Jul 1967
William S. Crosby Officer-In-Charge	7 Sep 1984
Howard C. Hodges	2 Feb 1985
Roy B. Ferrell Officer-In-Charge	28 Oct 1987
Robert Stephen Bennett	12 Mar 1988
Nela P. Horton Officer-In-Charge	19 Apr 1989
Teresa McMillian Officer-In-Charge	15 Aug 1989
Ben Jones Officer-In-Charge	29 Nov 1989
Deborah A. (Malewicz) Welker	2 Jun 1990
Linda W. Hodges Officer-In-Charge	18 Mar 1996
Wilson Reid Officer-In-Charge	31 Mar 1997
Jimmy Horton Officer-In-Charge	4 Jun 1997
Linda W. Hodges	5 Jul 1997
LeRoy K. Guthrie Officer-In-Charge	29 Nov 2000
Billie S. Simkins Officer-In-Charge	12 Jan 2001
John Tom Flynn Officer-In-Charge	16 Oct 2001
John Tom Flynn	17 Nov 2001
Johnny M. Trahan Officer-In-Charge	27 Dec 2002
Johnny M. Trahan	8 Mar 2003



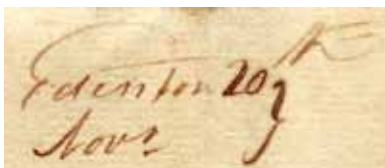
Manuscript
January 1787

EDENTON. SEPT, 29

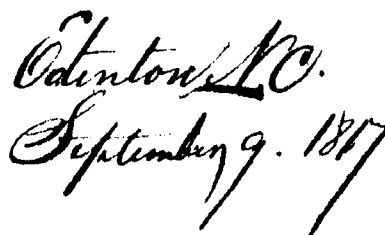
Type 1
45 x 3 mm Red
14 Oct 1787
11 Aug 1788

FREE PAID

Note:
Sometimes there is no period after "EDENTON" and sometimes there is a comma. Length of postmark varies because of date



Manuscript
20 Feb 1793
20 Nov 1793

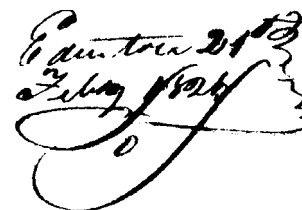


Manuscript
18 Apr 1812
16 Dec 1817



Type 2
30 mm Red
7 Apr 1818
16 Dec 1823

PAID



Manuscript
(sometimes in red ink)
14 Jan 1823
20 Dec 1825

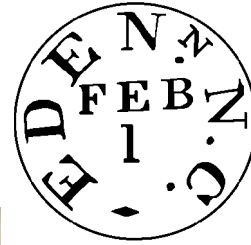
CHOWAN COUNTY

Edenton (Cont.)

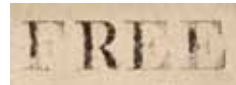
(Chowan)

Billie Simkins Officer-In-Charge 14 Sep 2004
 Delores S. Ferrell Officer-In-Charge 23 Sep 2004
 Shannon Guirkins Officer-In-Charge 4 Oct 2004
 Linwood E. Peaden Jr. 5 Feb 2005
 Cinder R. Isreal 27 Aug 2011
 Lillian Evans Officer-In-Charge
 Millard Bond Officer-In-Charge 1 Jun 2012
 Derek E. Boone 5 Apr 2014
 David L. Martin 12 Nov 2016

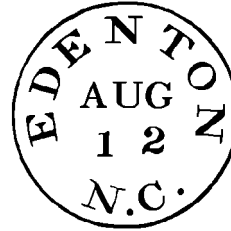
SHIP
PAID
PAID



Type 3
 32 mm Red
 11 Apr 1826
 30 Oct 1826
 32 mm Black
 7 Jan 1827
 10 Nov 1838



PAID
FREE



Type 4
 31 mm Red
 21 Mar 1839
 21 Feb 1850

PAID

31 mm Blue/Green
 13 Nov 1840
 6 Nov 1844

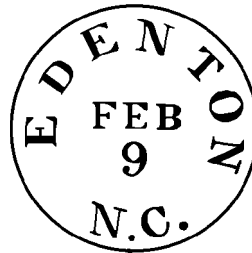


31 mm Black
 20 Feb 1840
 30 Nov 1855

55 Type 1 **5** Type 2 **5** Type 3

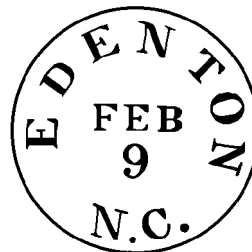


PAID
SHIP



Type 5
 33 mm Black
 4 Jul 1856
 30 Mar 1860

Confederate



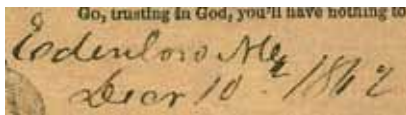
Type 5
 33 mm Black
 8 Nov 1861
 24 Apr 1862

CHOWAN COUNTY

Edenton (Cont.)

(Chowan)

Confederate (Cont.)



Manuscript
10 Dec 1862

Reconstruction



Type 6
26 mm Black
19 Aug 1868
21 Aug 187x



Type 7
25 mm Black
15 Nov 1875
23 Nov 188x
27 mm Blue
26 Mar 1877
21 Nov 1877



Type 8
27 mm Black
14 Mar 188x
1 Dec 188x

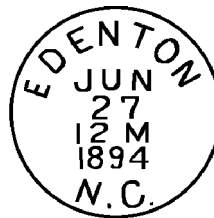


Type 9
27 mm Black
26 May 1884
10 Aug 1885

CHOWAN COUNTY

Edenton (Cont.)

(Chowan)



Type 10
28 mm Black
16 Apr 1890
27 Jun 1894



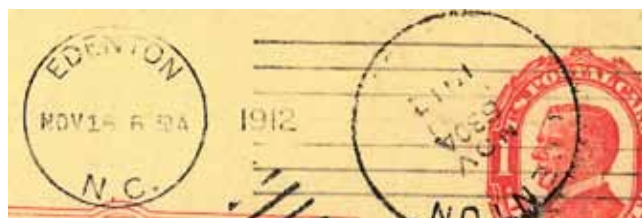
Type 11
27.5 mm Black
7 Feb 1895
11 Nov 1898



Type 12
28 mm Black
Metal Duplex Type H2
(7 bars)
14 Feb 1900
6 Oct 1902



Type 13
30 mm Black
Metal Duplex Type H2
(6 bars)
24 Jan 1904
5 Nov 1914



Type 14
24 mm Black
Cummins Machine
Type F-131
13 Jun 1912
5 Jun 1913

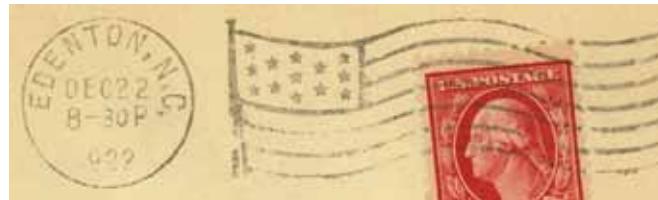
CHOWAN COUNTY

Edenton (Cont.)

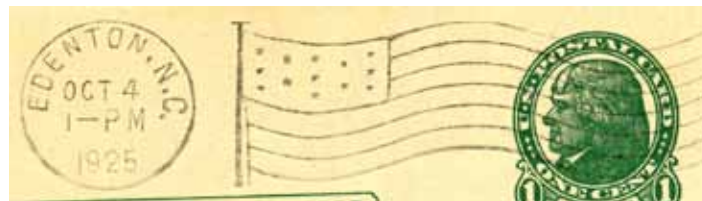
(Chowan)



Type 15
26 mm Black
Metal Duplex Type E2
25 Apr 1916
5 Jan 1943



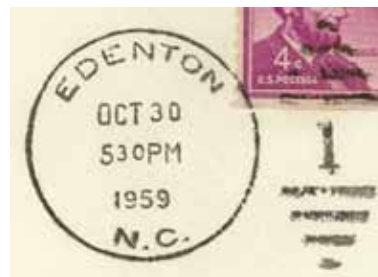
Type 16
22 mm Black
American Machine
Flag Type A14
20 Mar 1921
18 Oct 1923



Type 17
22 mm Black
American Machine
Flag Type A14
(Long field hand cut die)
11 Sep 1925
4 Oct 1925



Type 18
20.5 mm Black
International Machine
Type D30
22 Nov 1927
3 Jul 1945



Type 19
31 mm Black
Metal Duplex Type ?
30 Oct 1952
30 Oct 1959



Type 20
21.5 mm Black
International Machine
Type D30
9 Oct 1950
25 Jan 1962

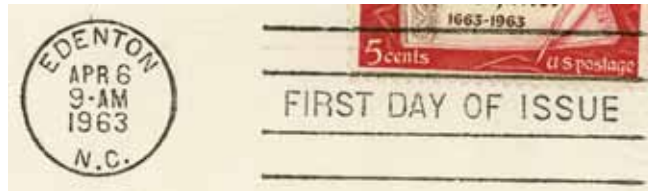
CHOWAN COUNTY

Edenton (Cont.)

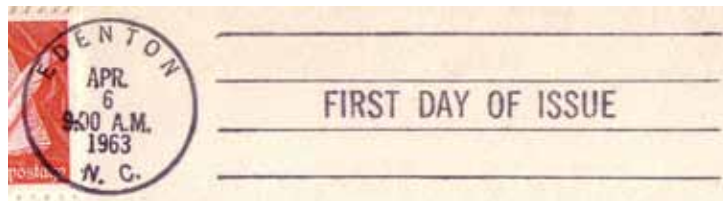
(Chowan)



Type 21
29.5 mm Magenta
8 Dec 1959



Type 22
20 mm Black
6 Apr 1963



Type 23
23.5 mm Black
6 Apr 1963



Type 24
21 mm Black
International Machine
Type J30
16 Sep 1963
29 Nov 1965



Type 25
21 mm Black
International Machine
Type Hz30 (27932)
16 Aug 1966
17 Dec 1980

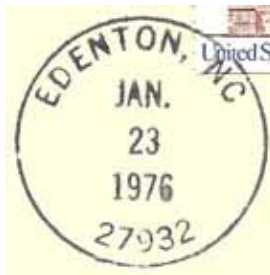


Type 26
33.5 mm Black
1963 Type F/2 4-Bar (27932)
13 Mar 1968

CHOWAN COUNTY

Edenton (Cont.)

(Chowan)



Type 27
33 mm Black
(27932)
23 Jan 1976



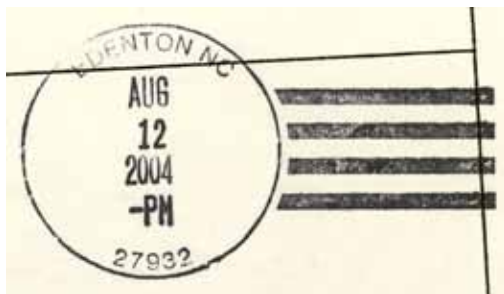
Type 28
31.5 mm Black
1963 Type F/2 4-Bar (27932)
11 Aug 1980



Type 29
27.5 mm Magenta
11 Aug 1980
18 Nov 1985



Type 30
32.5 mm Black
1963 Type F/2 4-Bar (27932)
15 Dec 1991



Type 31
34 mm Black
Self-Inking Postmarker (27932)
12 Aug 2004
13 Apr 2007

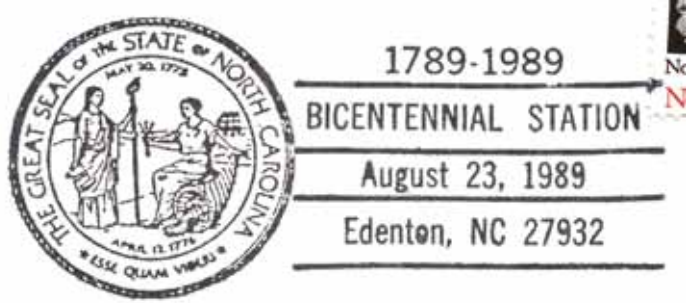
CHOWAN COUNTY

Edenton (Cont.)

(Chowan)

Temporary Station Cancels

Bicentennial Station



Type 1
 86.5 x 37 mm Black
 (27932)
 23 Aug 1989

Receiving datestamp



Type R1
 27.5 mm Black
 11 Jun 1888



Type R2
 27.5 mm Black
 20 Mar 1897
 22 Mar 1897



Type R3
 29.5 mm Black
 21 Jul 1902



Type R4
 28.5 mm Black
 13 Jun 1902
 1 Oct 1904

CHOWAN COUNTY

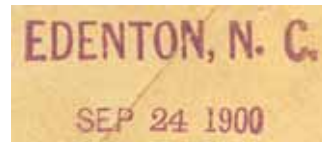
Edenton (Cont.)

(Chowan)

Registered



Type 1
40 x 32 mm Magenta
23 Aug 1897



Type 2
38 x 5 mm Magenta
7 Aug 1900
24 Sep 1900



Type 3
29.5 mm Magenta
13 May 1926

Parcel Post



Type 1
29.5 mm Black
12 Jul 194x

CHOWAN COUNTY

Edenton (Cont.)

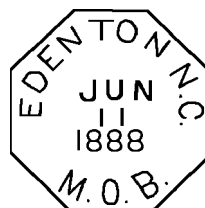
(Chowan)

Mailing Division



Type 1
29 mm Magenta
24 Nov 1944

M.O.B.
(Money Order Business)



Type 1
26.5 mm Octagon Black
11 Jun 1898

Gliden

(Chowan)

Anderson J. Ward	18 Aug 1885
Jessie B. Spivey	27 Sep 1913
Timothy J. Bunch	6 Apr 1916
Anderson D. Ward	10 May 1923
Discontinued	29 Feb 1932
Mail to Hobbsville, Gates County	



Type 1
28.5 mm Black
26 Sep 1901
30 Sep 1904



Type 2
31 mm Blue
Doane Type 3-1
13 May 1910
17 Aug 1912

CHOWAN COUNTY

Gliden (Cont.)

(Chowan)



Type 3
32.5 mm Blue
1925 Type C/1 4-Bar
29 Feb 1932

Holly Wharf

(Chowan)

George W. Womble 25 Feb 1878
Discontinued 4 Dec 1879

Jordan

(Chowan)

William E. Jordan 23 Jul 1888
Discontinued 11 Jun 1890
No Papers

Mege, Meege

(Chowan)

Miles S. Elliott 21 May 1902
Discontinued 30 Nov 1906
Mail to Tyner
Re-established as **Meege**
Miles S. Elliott 10 Aug 1920
Artenias S. Bush 19 May 1921
Discontinued 14 Mar 1925
Mail to Edenton



Type 1
29 mm Black
1 Jul 1902

CHOWAN COUNTY

Myra

(Chowan)

John A. Northcott	1 Dec 1891
Discontinued	21 Sep 1894
Mail to Edenton	

Rockyhock

(Chowan)

William F. Boyce	26 Jun 1884
Henry C. Nixon	2 Sep 1891
Sarah C. Jones	30 Nov 1894
Herbert B. Jones	23 Nov 1899
Lillie M. Jones	5 Oct 1903
Discontinued	30 Apr 1906
Mail to Tyner	

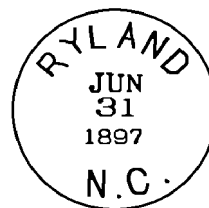


Type 1
27 mm Black
24 Nov 189x
29 Nov 1901

Ryland

(Chowan)

William H. Spivey	14 Jan 1888
Malvern R. Spivey	23 Sep 1918
Orestes E. Spivey	14 Jun 1922
Rella M. Spivey, Acting	31 Mar 1934
Rella M. Spivey	8 Aug 1934
Rella M. Jordan (marriage)	26 Dec 1956
Mrs. Naomi J. Ward Officer-In-Charge	30 Sep 1971
Discontinued	26 Nov 1971
Mail to Tyner	



Type 1
27 mm Black
22 Mar 1897
30 Sep 1904

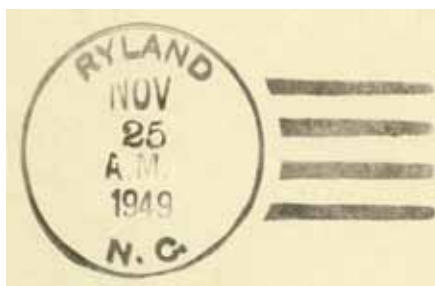


Type 2
32 mm Black
1910 Type B 4-Bar
18 May 1916

CHOWAN COUNTY

Ryland (Cont.)

(Chowan)



Type 3
33 mm Black
1936 Type F/1 4-Bar
25 Nov 1949
13 May 1965



Type 4
32 mm Black
1963 Type F/2 4-Bar (27971)
12 Nov 1966

Smalls Cross Roads

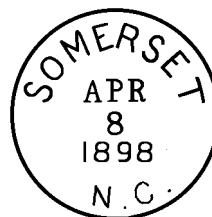
(Chowan)

Richard Elliott	26 Feb 1874
Discontinued	13 May 1880

Somerset

(Chowan)

John C. Thompson	23 Jul 1888
Ephraim L. McClees	3 Feb 1898
Thomas C. Hedrick	3 Aug 1899
Discontinued	30 Nov 1903
Mail to Edenton	



Type 1
28 mm Black
8 Apr 1898

CHOWAN COUNTY

Tulu

(Chowan)

Warren J. Byrum 24 Nov 1903
 Discontinued 15 Dec 1917
 Mail to Ryland

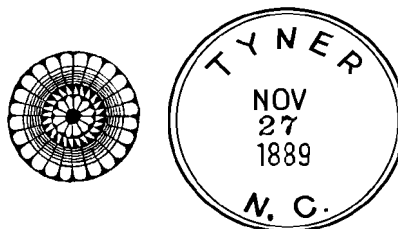


Type 1
 29 mm Black
 15 Mar 1909
 17 May 1910

Tyner

(Chowan)

Malachi Chappell 1 Mar 1880
 Jeremiah Ellis 7 Apr 1882
 Discontinued 22 Jan 1883
 Mail to Belvidere, Perquimans County
 Malachi B. Chappell 30 Jun 1884
 Luther W. Parker 28 Nov 1887
 Jesse P. Chappell 10 Aug 1893
 Oliver E. Lane 24 Jan 1905
 Octavius E. Ward 16 Apr 1914
 Titus E. Chappell 1 May 1916
 Millicent Chappell, Acting 21 Sep 1922
 James L. Baker 20 Nov 1922
 Moody L. Chappell, Acting 29 Sep 1925
 Sarah M. Lane, Acting 10 Nov 1925
 Henry E. Lane 13 Jan 1926
 T. O. Asbell 1 Oct 1944
 Mrs. Nora Lane Boyce, Acting 1 Aug 1945
 Nora Lane Boyce 10 Nov 1945
 Nora L. Prinott (marriage) 10 Jun 1967
 Janice B. Hobbs, Acting 31 Jan 1968
 Janice B. Hobbs 4 Apr 1968
 Mrs. Dotmegan L. Rogerson 16 Apr 1983
 Lynette L. Hamilton Officer-In-Charge 28 Apr 1992
 Carolyn P. Hollowell Officer-In-Charge 8 Sep 1992
 Wilson E. Reid Jr. 6 Feb 1993
 Lucy G. Beamon Officer-In-Charge 29 Apr 2002
 Sandra H. Mitchell Officer-In-Charge 10 May 2002
 Millard H. Bond 18 May 2002
 Converted to Remotely Managed Post
 Office of Hertford 4 Oct 2014



Type 1
 31.5 mm Black
 23 Jan 1889
 27 Nov 1889

Usually used with
 wheel-of-fortune killer



Type 2
 28 mm Black
 23 Nov 1904



Type 3
 29.5 mm Black
 Doane Type 2-2
 12 May 1906
 3 Aug 1907



Type 4
 31 mm Black
 1906 Type A/1 4-Bar
 18 Oct 1909
 8 Jan 1910

CHOWAN COUNTY

Tyner (Cont.)

(Chowan)



Type 5
31.5 mm Black
1908 Type A/2 4-Bar
22 Apr 1913



Type 6
31.5 mm Black
1910 Type B 4-Bar
29 Sep 1913



Type 7
30 mm Black
Metal Duplex Type H2
20 Jun 1916
19 Oct 1921



Type 8
33 mm Black
1936 Type F/1 4-Bar
4 Mar 1936
18 Nov 1943



Type 9
29.5 mm Magenta
1 Jul 1949
21 Nov 1955

CHOWAN COUNTY

Tyner (Cont.)

(Chowan)



Type 10
30.5 mm Black
Metal Duplex Type ?
3 May 1951
28 Feb 1962



Type 11
33.5 mm Black
1963 Type F/2 4-Bar (27980)
12 Oct 1967
28 May 1975



Type 12
31.5 mm Black
1963 Type F/2 4-Bar (27980)
22 May 1978
20 May 1982



Type 13
32.5 mm Black
1963 Type F/2 4-Bar (27980)
18 Jul 1989



Type 14
33 mm Black
1963 Type F/2 4-Bar (27980)
14 Jan 1994

CHOWAN COUNTY

Tyner (Cont.)

(Chowan)



Type 15
33 mm Black
1963 Type F/2 4-Bar (27980)
4 Sep 1998



Type 16
28.5 mm Magenta
29 Nov 2000

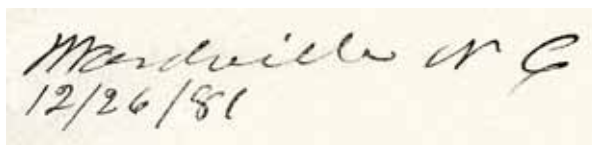


Type 17
32 mm Black
Self-Inking Postmarker (27980)
30 Aug 2007

Wardville

(Chowan)

Allen C. Ward 20 Jun 1870
Jeptha A. Ward 5 Jan 1875
Discontinued 22 Jan 1883
Mail to Belvidere, Perquimans County



Manuscript
26 Dec 1881

CHOWAN COUNTY

Woodley, name changed from Chowan

(Chowan)

George H. Cole	27 Nov 1888
Edward S. Holleman	1 Aug 1890
James T. Hearn	16 Jan 1892
William J. Richards	31 Oct 1892
Discontinued	21 Apr 1898
Mail to Amboy	