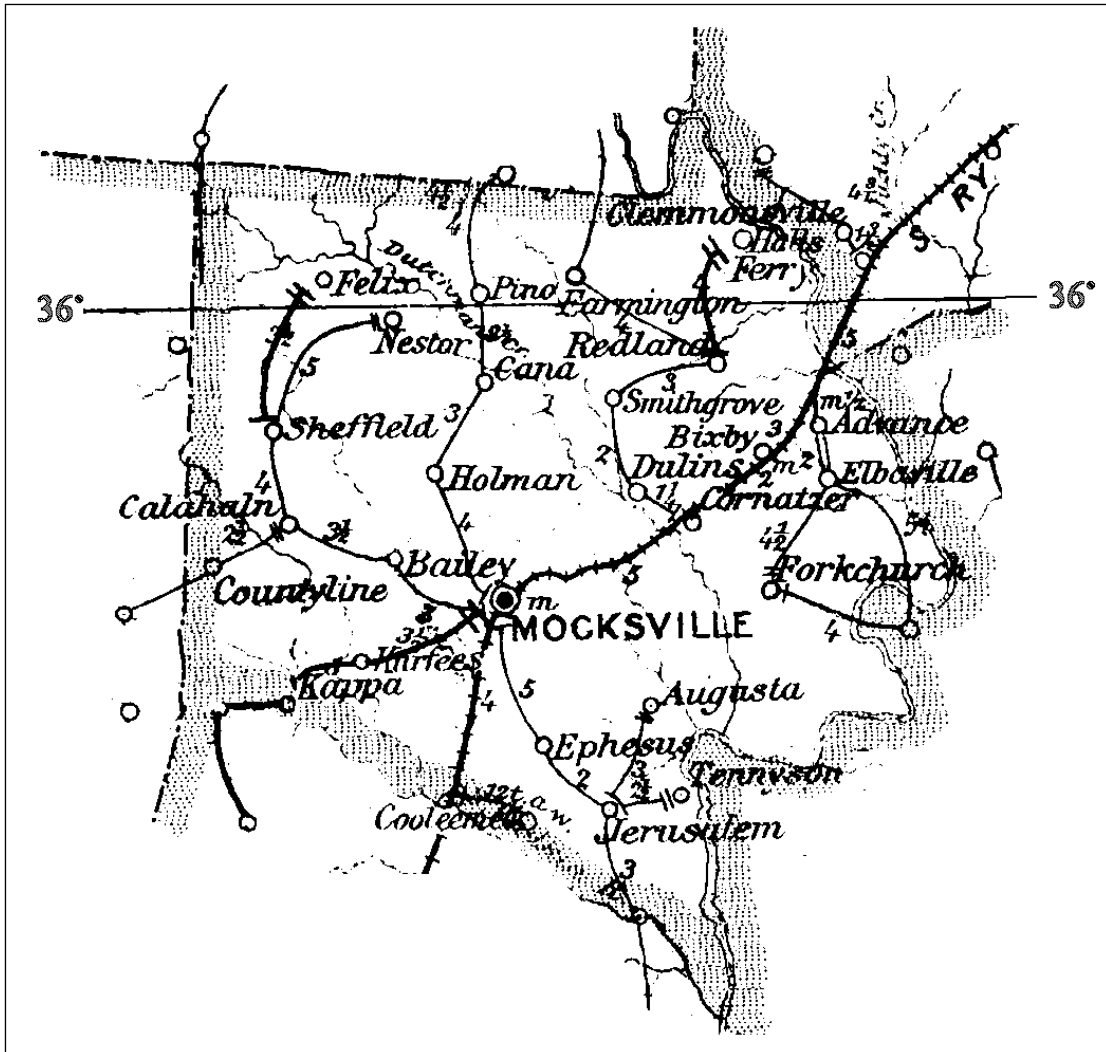


DAVIE COUNTY

Established 20 December 1836

From Rowan County

Number of Post Offices - 36
Number with postmarks known - 28



DAVIE COUNTY

Advance

(Davie)

Enoch Hartman	16 Feb 1877
Alexander A. Springs	13 Nov 1877
Henry T. Smithdeal	10 Apr 1885
Mattie E. Lippord	29 Jun 1889
Henry T. Smithdeal	17 Apr 1893
William C. White	1 Jun 1897
L. A. Bailey	16 Aug 1909
William T. Mack	14 Feb 1914
James L. Talbert, Acting	5 Jun 1925
James L. Talbert	17 Dec 1925
Mary Lewis Hartman, Acting	10 Jun 1942
Elizabeth P. Bailey	19 Mar 1943
Walter G. Ratledge, Acting	15 Jul 1950
Walter G. Ratledge	18 Jun 1952
Ralph C. Ratledge , Acting	31 Dec 1953
Gladys T. Ratledge	5 Aug 1954
Pansy C. Ward, Acting	9 Dec 1966
Mamie B. Hartman, Acting	16 Jun 1967
Mamie B. Hartman	19 Jun 1968
Kay Brakefield Officer-In-Charge	23 May 1988
William A. Caudle Officer-In-Charge	13 Jul 1988
Robert Wayne Norman Officer-In-Charge	1 Feb 1989
David L. Dilbeck Officer-In-Charge	19 Jul 1989
Charles E. Beres	30 Jun 1990
Angela H. Curtis Officer-In-Charge	13 Jan 1998
William C. Shatzel	28 Feb 1998
Sammy Wall Officer-In-Charge	11 Dec 2004
Darlene P. Williams	16 Apr 2005
James Norman Officer-In-Charge	1 Nov 2007
James H. Norman	29 Mar 2008
Dana Sheets Officer-In-Charge	12 Jul 2010



Type 1
33.5 mm Black
29 May 1885
14 May 1894



Type 2
31.5 mm Black
10 Feb 1892
9 Feb 1893



Type 3
28 mm Black
10 Feb 1897
12 Oct 1901



Type 4
28.5 mm Black
Doane Type 2-4
21 Mar 1905
10 Apr 1911

Terri L. Poteet	16 Jul 2011
David A. Albertson	30 Jun 2012
Renee Magee Officer-In-Charge	
Brian Hutchens Officer-In-Charge	23 Oct 2012
Jennifer Steinmetz Officer-In-Charge	26 Jul 2013
Terri L. Poteet	27 Jul 2013
Terri L. Pierce (marriage)	4 Jun 2018
Melisa Cox Officer-In-Charge	26 Jun 2019
Cheryl R. Burleson Officer-In-Charge	25 Sep 2019
Cheryl R. Burleson	29 Feb 2020



Type 5
31.5 mm Black
1910 Type B 4-Bar
7 Aug 1911
17 Jul 1916

DAVIE COUNTY

Advance (Cont.)

(Davie)



Type 6
30 mm Black
Metal Duplex Type H2
23 Nov 1916



Type 7
32.5 mm Black
1925 Type C/1 4-Bar
16 Jan 1929



Type 8
36 mm Black
Non-standard 4-Bar
23 Jan 1943



Type 9
33 mm Black
1936 Type F/1 4-Bar
8 Oct 1943

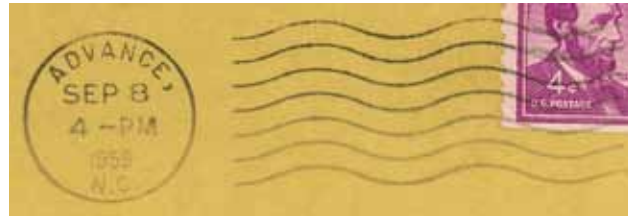


Type 10
30.5 mm Black
Metal Duplex Type ?
14 Sep 1951
4 Jan 1961

DAVIE COUNTY

Advance (Cont.)

(Davie)



Type 11
22.5 mm Black
International Machine
Type AT/S 2721
22 Jan 1959
24 May 1963



Type 12
22.5 mm Black
International Machine
Type AT/S 2712
18 Jan 1964
9 Feb 1965



Type 13
23.5 mm Black
International Machine
Type AT/S 2712
7 Jun 1966
29 May 1970



Type 14
33.5 mm Black
1963 Type F/2 4-Bar (27006)
31 May 1968



Type 15
32 mm Black
1963 Type F/2 4-Bar (27006)
17 Sep 1976

DAVIE COUNTY

Advance (Cont.)

(Davie)



Type 16
34.5 mm Red
Self-Inking Postmarker
Type 4A (27006)
2 Jan 1988
26 Sep 1992



Type 17
27.5 mm Red
Self-Inking Postmarker (27006)
2 Jan 1991
24 May 2003



Type 18
36 mm Red
Self-Inking Postmarker (27006)
21 May 2004
21 Mar 2006



Type 19
35 mm Red
Self-Inking Postmarker
(27006-9998)
5 May 2005
16 Dec 2005



Type 20
30 mm Red
Self-Inking Postmarker (27006)
22 Sep 2005
5 Feb 2008

DAVIE COUNTY

Advance (Cont.)

(Davie)

Station Cancels

Bermuda Quay Station



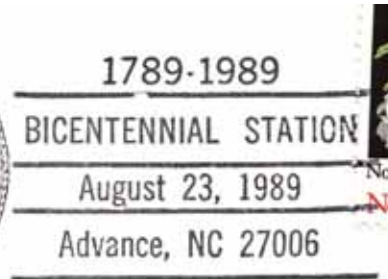
Type 1
28 mm Red
Self-Inking Postmarker (27006)
30 Sep 1990
14 May 1996



Type 2
43.5 mm Red
Self-Inking Postmarker (27006)
19 Jul 2005
3 Jul 2006

Temporary Station Cancels

Bicentennial Station



Type 1
86.5 x 37.5 mm Black
(27006)
23 Aug 1989

DAVIE COUNTY

Advance (Cont.)

(Davie)

Temporary Station Cancels (Cont.)

Sesquicentennial Station



Type 1
90.5 x 49 mm Black
(27006)
29 Dec 1986

Rural Free Delivery

Type 2B (1)
1902

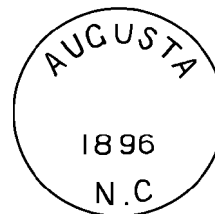


Type 2B (2)
15 Jun 1904
20 Jun 1904

Augusta

(Davie)

John D. Hodges 1 Aug 1888 Dis-
continued 30 Jun 1902
Mail to Mocksville



Type 1
28 mm Black
1896
11 Feb 1900

DAVIE COUNTY

Bailey, name changed from Selena

(Davie)

John M. Blount 19 Apr 1890
Mattie Mooring 13 Apr 1895
Discontinued 30 Jun 1902
Mail to Mocksville



Type 1
28 mm Black
10 Feb 1893
27 Mar 1900

Bend

(Davie)

Charlie G. Swaringen 18 Jul 1901
Discontinued 31 May 1911
Mail to Farmington

Bixby

(Davie)

William I. Myers 26 Jul 1898
Dewill H. Hendricks 1 May 1915
Joseph H. Robertson 27 Apr 1920
Discontinued 15 Mar 1935
Mail to Advance



Type 1
27.5 mm Black
14 Nov 1904
10 Feb 1912



Type 2
30 mm Black
Metal Duplex Type H2
27 Nov 1916

DAVIE COUNTY

Calahaln

(Davie)

Charles Anderson	8 Dec 1858
Charles Anderson, CSA	5 Jul 1861
CSA office closed on or before	30 Apr 1865
Federal office discontinued	7 Jan 1867
Sallie T. Anderson	10 Nov 1868
Sallie T. Smoot	2 Sep 1873
Charles Anderson	13 Apr 1883
Richard S. Anderson	17 Nov 1894
Lizzie J. Tomlinson	23 Jan 1906
Wiley N. Anderson	15 Aug 1913
Nelson T. Anderson	22 Mar 1928
Discontinued	15 Aug 1932
Mail to Mocksville	

Calahaln

Manuscript
1 Sep 1879
3 Jul 1885



Type 1
28.5 mm Black
Doane Type 2-1
16 Mar 1908
10 Mar 1910



Type 2
32.5 mm Black
1910 Type B 4-Bar
13 Mar 1917

Cana

(Davie)

James H. Cain	12 Feb 1875
John R. Baile	12 Dec 1898
William H. Foote	9 Apr 1914
Ina N. Cain	13 Mar 1919
Discontinued	30 Sep 1954
Mail to Mocksville	



Type 1
28 mm Black
3 May 1886
26 Sep 1900



Type 2
31.5 mm Black
1908 Type A/2 4-Bar
15 Oct 1909
7 Feb 1910

DAVIE COUNTY

Cana (Cont.)

(Davie)



Type 3
31 mm Black
1910 Type B 4-Bar
8 Jan 1913



Type 4
33 mm Black
1930 Type E 4-Bar
25 Mat 1936



Type 5
33 mm Black
1936 Type F/1 4-Bar
21 Nov 1941
30 Sep 1954

Rural Free Delivery



Type 8C (1)
31 mm Black
12 Jan 1907
13 Jul 1909

DAVIE COUNTY

Cana (Cont.)

(Davie)

Rural Free Delivery (Cont.)



Type 8C (2)
31 mm Black
9 Sep 1907
30 Oct 1908

Clarksville

(Davie)

William O. Smith	23 Jun 1855
Hamon Critz	30 Jan 1860
Hamon Critz, CSA	3 Jul 1861
CSA office closed on or before	30 Apr 1865
Rachael E. Chesire	16 Dec 1865
Mary H. Critz	1 Jul 1867
Sarah A. Anderson	22 Aug 1867
George J. Bool	7 Jul 1868
Discontinued	9 Aug 1869

Cooleemee

(Davie)

John S. Lyon	9 Feb 1900
George C. Patterson	15 Dec 1902
William H. Candell	28 Dec 1906
Thomas L. Swicegood	26 Mar 1910
Jesse G. Foster	10 Apr 1914
Noah J. Grimes	23 Nov 1921
Lillington Hendrix, Acting	7 Sep 1933
Lillington Hendrix	16 Jan 1935
William C. White, Acting	30 Sep 1952
Tullie M. Alexander, Acting	31 Jul 1953
Mrs. Tullie M. Alexander	16 Jul 1954
William C. White, Acting	31 Jan 1962
William C. White	27 Sep 1962
F. Katherine Craddock Officer-In-Charge	31 Aug 1979
Harold L. Reid	15 Dec 1979
Margie B. Pope Officer-In-Charge	6 Apr 1987
Joan W. Steele	23 May 1987
Elizabeth B. Owens Officer-In-Charge	2 Oct 1998
Judith F. Brittain Officer-In-Charge	14 Oct 1998
Judith F. Phillips (marriage)	24 Oct 1998
Michael Craig Mock Officer-In-Charge	31 Jan 2005
Michael Craig Mock	2 Apr 2005



Type 1
29 mm Black
19 Sep 1901
27 Apr 1904

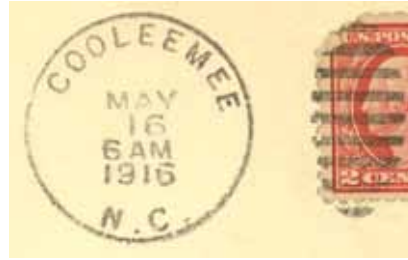


Type 2
30 mm Black
Metal Duplex Type H2
26 Jul 1907

DAVIE COUNTY

Cooleemee (Cont.)

(Davie)



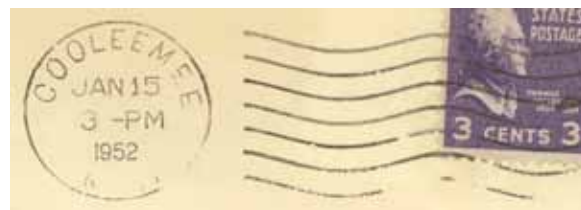
Type 3
30 mm Black
Metal Duplex Type H2
23 Nov 1911
20 Feb 1919



Type 4
33.5 mm Black
1925 Type C/1 4-Bar
12 Mar 1932



Type 5
31 mm Black
Metal Duplex Type E2
14 May 1934
22 Jun 1960



Type 6
24 mm Black
Ielfield Machine
Type A1
9 May 1950
15 Jan 1952



Type 7
21 mm Black
Universal Machine
Type DT 300
3 May 1956
8 Apr 1965

DAVIE COUNTY

Cooleemee (Cont.)

(Davie)



Type 8
20.5 mm Black
Universal Machine
Type DTSz 300 (27014)
26 Mar 1966
1 Jul 1985



Type 9
33 mm Black
1963 Type F/2 4-Bar (27014)
18 Jul 1974
28 Sep 1992



Type 10
33.5 mm Black
1963 Type F/2 4-Bar (27014)
27 Sep 1993
7 Aug 1995



Type 11
33.5 mm Black
Self-Inking Postmarker (27014)
13 Apr 2005
8 May 2007



Type 12
34.5 mm Red
Self-Inking Postmarker (27014)
29 Jun 2005
3 Oct 2006

DAVIE COUNTY

Cooleemee (Cont.)

(Davie)



Type 13
31 mm Black
Self-Inking Postmarker (27014)
2 Jan 2008
7 Oct 2008

Temporary Station Cancels

Sesquicentennial Station



Type 1
90.5 x 48 mm Black
(27014)
29 Dec 1986

Registered



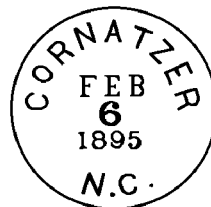
Type 1
29 mm Magenta
26 Nov 1947

DAVIE COUNTY

Cornatzer

(Davie)

Jacob H. Cornatzer	29 Mar 1892
William J. Strickland	17 Mar 1896
Minnie E. Cornatzer	2 Jul 1897
Minnie E. Foster	23 Jan 1904
Drury D. Bennett	9 Sep 1905
Discontinued	31 May 1932
Mail to Mocksville	



Type 1
27.5 mm Black
6 Feb 1895



Type 2
32.5 mm Magenta
1925 Type C/1 4-Bar
31 May 1932

County Line, from Rowan County

(Davie)

Richard T. Dismukes	20 Dec 1836
John Lunn	11 Mar 1837
Amos B. Sanford	22 Dec 1842
Wilfred Turner	7 Feb 1845
Nicholas M. Griffin	16 Dec 1850
John Wesley Eccles	26 May 1852
Henry C. Eccles	7 Mar 1856
Henry C. Eccles, CSA	6 Jul 1861
Discontinued on or before	30 Apr 1865
John Seamon	16 Dec 1865
John W. Gray	30 Sep 1867
G. F. Downum	18 Nov 1879
N. Spurgeon Gaither	22 Mar 1881
Joshua T. Eaton	12 Oct 1883
Dabney Lowery	10 Oct 1889
Bettie E. Blackwell	23 Oct 1893
Mary T. Lowery	8 Oct 1897
Discontinued	31 May 1906
Mail to Mocksville	

County Line

Manuscript
12 Oct 1844
27 Dec 1847

*County Line to
June 30
1857*

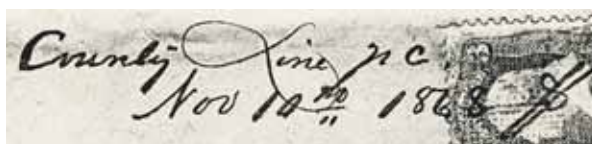
Manuscript
30 Jun 1857

Confederate



Manuscript
27 Aug 1861
9 Feb 1864

Reconstruction



Manuscript
10 Nov 1868

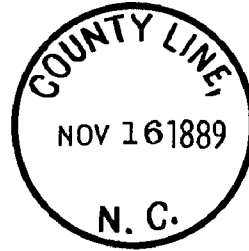
DAVIE COUNTY

County Line (Cont.)

(Davie)

County Line Ga
4-15-1889

Manuscript
3 Jun 1884
6 Feb 1891



Type 1
32.5 mm Black
16 Nov 1889



Type 2
28 mm Black
5 Mar 1901
24 Feb 1902

Dulins

(Davie)

William F. Summers 10 Mar 1887
Thomas F. Atkinson 22 May 1888
Discontinued 20 Apr 1905
Mail to Mocksville



Type 1
27 mm Black
20 Nov 1898

Dutchman

(Davie)

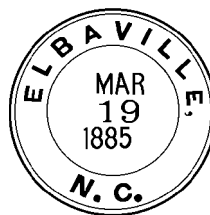
William C. Atkinson 1 Jun 1894
Discontinued 8 Feb 1898
Papers to Smith Grove

DAVIE COUNTY

Elbaville

(Davie)

Lewis Bailey 15 Aug 1870
 Amanda J. Ellis 9 Feb 1898
 Benton C. Orell 21 Oct 1901
 Discontinued 30 Jun 1902
 Papers to Advance



Type 1
 27.5 mm Black
 19 Mar 1885
 27 Sep 1891

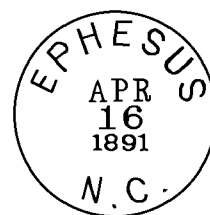


Type 2
 27 mm Black
 7 Mar 189x

Ephesus

(Davie)

Miles A. Foster 10 May 1890
 Discontinued 31 May 1906
 Mail to Mocksville



Type 1
 27 mm Black
 16 Apr 1891
 18 Aug 1891

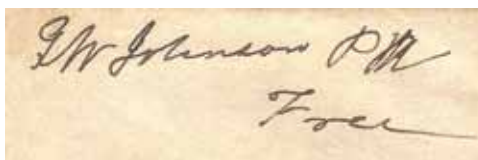
Farmington

(Davie)

George W. Johnson 1 May 1837
 G. W. Johnson, CSA 4 Jul 1861
 CSA office closed on or before 30 Apr 1865
 Sarah D. McGill 16 Jan 1866
 Valeria M. Johnson 4 Dec 1868
 Francis M. Johnson 3 Dec 1874
 Richard C. Brown 30 Aug 1878
 Francis M. Johnson 30 Jan 1883
 Peter Lowery 13 Nov 1890
 William G. Johnson 23 May 1893
 Galenus H. Graham 8 Nov 1897
 Charles A. Hartman 30 Apr 1904
 Jettie R. Graham 3 Aug 1908
 Ernest P. Walker 12 Nov 1909
 Thomas C. Fry 14 Nov 1914
 Cora B. Brock 7 Aug 1918
 Elsie Clarence James, Acting 4 Mar 1936
 Elsie Clarence James 15 May 1936
 Discontinued 30 Sep 1954
 Mail to Mocksville



Manuscript
 7 Sep 1838
 12 Oct 1844



Postmaster frank
 16 Oct 1840



Type 1
 29 mm Black
 185x
 16 Jan 1857

DAVIE COUNTY

Farmington (Cont.)

(Davie)

G. W. Johnson Postmaster

Postmaster frank
16 Jan 1857

Confederate



Type 2
32 mm Black
31 Jul 1861
22 Nov 1861

Reconstruction



Type 3
24.5 mm Blue
25 Mar 187x



Type 4
26 mm Black
27 Nov 187x



Type 5
27.5 mm Black
23 Feb 1883

DAVIE COUNTY

Farmington (Cont.)

(Davie)



Type 6
27.5 mm Black
13 Aug 1888
9 Feb 1895



Type 7
28.5 mm Black
2 Mar 1896
4 May 1898



Type 8
29 mm Black
Metal Duplex Type H2
24 Jul 1908
2 Mar 1910



Type 9
32.5 mm Black
1910 Type B 4-Bar
26 Feb 1920



Type 10
33.5 mm Black
1925 Type C/1 4-Bar
23 Sep 1935

DAVIE COUNTY

Farmington (Cont.)

(Davie)



Type 11
34 mm Black
1936 Type F/1 4-Bar
16 Sep 1954
30 Sep 1954

Felix

(Davie)

George L. Anderson 7 May 1886
James F. Frost 29 Jun 1889
Discontinued 15 May 1905
Mail to Cana

Felix A. C.

Manuscript
2 Apr 1896

Florence

(Davie)

Jilson A. Sheck 15 Jun 1877
Discontinued 17 Apr 1878

Fork

(Davie)

William H. Davis 29 Nov 1913
Discontinued 31 Jul 1918
William H. Davis 2 Feb 1937
Sadie Rice, Acting 1 Jul 1948
Sadie Rice 10 Sep 1948
Discontinued 31 Jan 1955
Mail to Mocksville



Type 1
32.5 mm Black
1910 Type B 4-Bar
22 Jun 1915

DAVIE COUNTY

Fork (Cont.)

(Davie)



Type 2
32.5 mm Black
1936 Type F/1 4-Bar
8 Mar 1937
22 Jun 1938



Type 3
33 mm Black
1936 Type F/1 4-Bar
9 Dec 1943
31 Jan 1955



Type 4
30 mm Magenta
31 Jan 1955

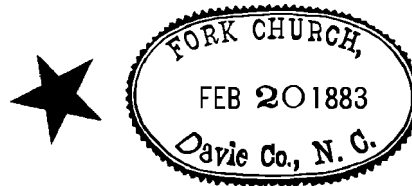
Fork Church

(Davie)

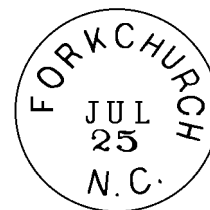
John R. Williams 24 Jul 1876
Wilson F. Merrell 20 Mar 1879
John R. Williams 31 Aug 1885
John R. Williams, Jr. 11 Sep 1885
John B. Smith 29 Jun 1889
Daniel V. Davis 24 May 1893
Andrew M. Foster 7 Aug 1897
Discontinued 30 Apr 1906
Mail to Mocksville

Fork Church N.C.

Manuscript
18 Feb 187x



Type 1
39 x 24 mm oval Black
20 Feb 1883
17 Jun 1884

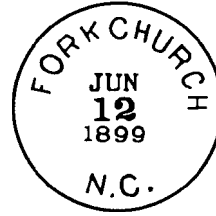


Type 2
27 mm Black
25 Jul 189x

DAVIE COUNTY

Fork Church (Cont.)

(Davie)



Type 3
28 mm Black
18 Jun 1893
19 Jan 1900



Type 4
28.5 mm Black
Doane Type 2-?
26 Aug 1905

Fulton

(Davie)

Joseph Hanes	20 Dec 1836
Lewis C. Hanes	7 Sep 1847
William R. Sharpe	18 Apr 1851
William R. Sharpe, CSA	16 Jul 1861
CSA office closed on or before	30 Apr 1865
Milton Hobbs	10 Feb 1866
Mary Ceeton	9 Apr 1866
Milton Hobbs	21 Oct 1867
Discontinued	6 Jan 1873
Elizabeth P. Sharpe	30 Jan 1873
George Fry	29 Oct 1884
Henry B. Ireland	10 Apr 1885
Sallie A. Hanes	4 May 1892
Discontinued	2 Mar 1896
Papers to Fork Church	

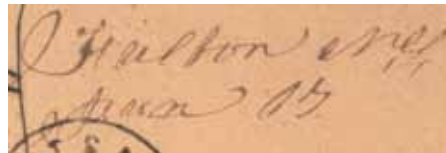
Fulton, w.b.

Manuscript
26 Mar 1845
9 Nov 1848

Fulton 1867

Manuscript
15 Mar 1850
21 Mar 1851

Confederate



Manuscript
17 Jan 1862

Reconstruction

Fulton, Feb 19th 1872

Manuscript
19 Feb 1872
17 Nov 1888

DAVIE COUNTY

Halls Ferry

(Davie)

Cornelius A. Hall 31 Oct 1878
 Levin A. Sheck 18 Nov 1887
 Cornelius A. Hall 21 Feb 1900
 Discontinued 30 Jun 1902
 Papers to Advance

*Halls Ferry N.C.
 Oct 10 / 1884*

Manuscript
 10 Oct 1884
 5 Feb 1900



Type 1
 27.5 mm Black
 3 Feb 1893



Type 2
 29.5 mm Purple
 16 Jul 1901

Holmans, Holman

(Davie)

Henry C. Holman 13 Mar 1878
 Jinnie B. Smoot 16 Dec 1890
 Name changed to **Holman** 17 Dec 1894
 Henry C. Holman 17 Dec 1894
 Discontinued 30 Apr 1906
 Mail to Mocksville

*Holman N.C.
 Jan 15th 1883*

Manuscript
 19 Jan 1883



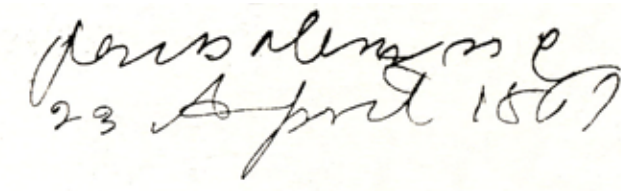
Type 1
 27.5 mm Black
 3 Mar 1897
 26 Mar 1897

DAVIE COUNTY

Jerusalem

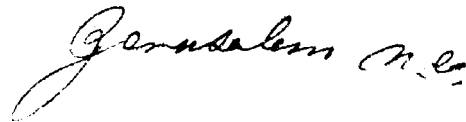
(Davie)

Joseph M. Hodges	15 Apr 1850
Colton W. Bissent	26 Jul 1856
C. W. Bissent, CSA	6 Jul 1861
CSA office closed on or before	30 Apr 1865
Federal office discontinued	11 Dec 1866
Anderson F. Pickler	29 Jan 1868
Thomas S. Butler	31 Jan 1871
John N. Charles	26 Apr 1872
Francis W. Charles	13 Nov 1895
Nannie M. Tate	6 Sep 1902
Discontinued	31 Oct 1902
Mail to Mocksville	

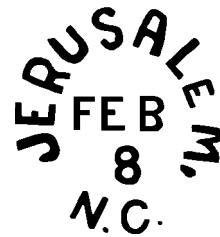


Manuscript
23 Apr 1861

Confederate

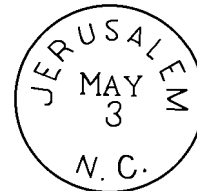


Manuscript
31 May 1861
18 Feb 1864

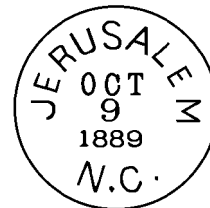


Type 1
27.5 mm Black
8 Feb 1863

Reconstruction



Type 2
25 mm Black
3 May 187x



Type 3
27 mm Black
9 Oct 1889
14 Nov 1893

DAVIE COUNTY

Kappa

(Davie)

Ann C. Ketchie	27 Mar 1883
Scott Smoot	1 May 1884
David H. Perry	17 Oct 1891
James J. Starrett	9 Aug 1893
Salena J. Ketchie	2 Oct 1895
Discontinued	15 May 1905
Papers to Mocksville	

Manuscript
8 Jan 188x



Type 1
27 mm Black
6 Mar 1900

Kurfees

(Davie)

Jesse L. Kurfee	22 Mar 1900
Discontinued	30 Jun 1902
Papers to Mocksville	

Mocksville, from Rowan County

(Davie)

Thomas McNeely	20 Dec 1836
Samuel Rose	2 Aug 1847
Pearsole Thompson	11 Apr 1851
Calvin U. Rich	14 Jan 1854
Beal Smith	31 Aug 1858
W. L. Brown	3 Feb 1859
William A. Meroney	28 Nov 1859
Rufus D. Brown	11 Aug 1860
R. D. Brown, CSA	1 Jun 1861
L. F. Parker, CSA	6 Jul 1861
CSA office closed on or before	30 Apr 1865
Ann M. Parker	9 Sep 1865
Thomas L. Leslie	3 Nov 1865
Jane E. Austin	4 Apr 1870
Edwin H. Morris	10 May 1897
Benjamin O. Morris	29 Sep 1908
E. E. Hunt, Sr.	20 May 1913
James L. Sheek	14 Apr 1922
J. Kimbrough Sheek, Acting	26 May 1931
Armand T. Daniel, Acting	6 Jun 1931
Armand T. Daniel	19 Feb 1932
John P. LeGrand, Acting	24 Feb 1936
John P. LeGrand	27 Mar 1936
James E. Kelly	1 Jul 1948

Manuscript
7 Feb 1837
1 Mar 1847



PAID
Type 1
FREE



Type 1
30 mm Red
26 Jul 1841
9 Dec 1851

30 mm Black
29 Jan 1848
24 Nov 1856

10 **10** **5** **5** **5**

Type 2 Type 1 Type 1 Type 2 Type 3

DAVIE COUNTY

Mocksville (Cont.)

(Davie)

Daisy Holthouser, Acting 26 Sep 1951
 James E. Kelly, Acting 30 Sep 1952
 Robert D. Tutterow, Acting 30 Sep 1954
 Worth T. Hendricks, Acting 22 Feb 1957
 Mrs Sudie R. Smoot, Acting 16 Dec 1960
 Roy H. Cartner, Acting 8 Mar 1961
 Roy H. Cartner 28 Mar 1962
 W. A. Lovelace Officer-In-Charge 30 Dec 1977
 Franklin R. Brown 22 Apr 1978
 Edsel G. Morgan Officer-In-Charge 27 Dec 1980
 Walter F. Loveless 30 May 1981
 Bennie Ward Officer-In-Charge 29 Aug 1990
 Harold L. Reid Officer-In-Charge 6 Feb 1991
 Dennis H. Peterson 29 Jun 1991
 William C. Shatzel Officer-In-Charge 28 Oct 1997
 Joan L. Holyfield 17 Jan 1998
 Michael Pike Officer-In-Charge 28 Mar 2001
 Randal Anderson Officer-In-Charge 22 Jan 2002
 Michael Golby Officer-In-Charge 22 Mar 2002
 Craig Mock Officer-In-Charge 2 Apr 2003
 Elizabeth L. Hammond 29 May 2004
 Bruce P. Huffman Officer-In-Charge 1 Jul 2009
 James W. Isenhour Officer-In-Charge 12 Feb 2010
 Shane E. Johnston 22 May 2010
 Leon M. Bryant 19 Jan 2019
 Darla K. Prevette 9 May 2020

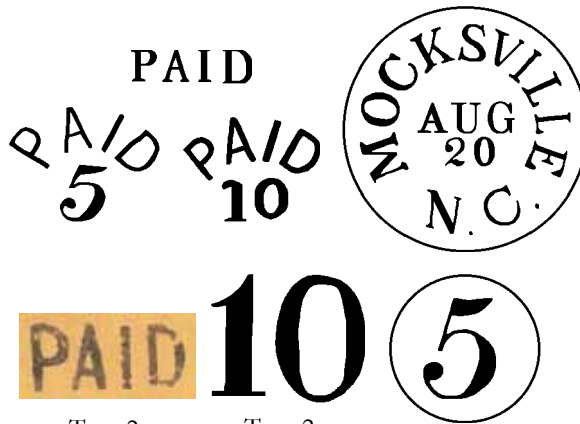
*Mocksville N.C.
23 March*

Manuscript
23 Mar 1857
19 Jan 1858



Type 2
32.5 mm Black
2 Oct 185x
9 Aug 1860

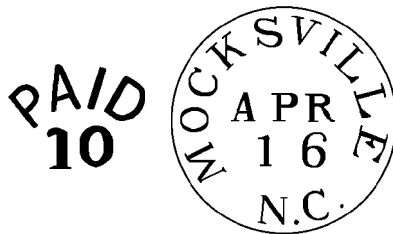
Confederate



Type 2
32.5 mm Black
5 Jul 1861
20 Aug 1862



Type 2 Type 2



Type 1
30 mm Black
1 Feb 1862
21 Jul 1863

Mocksville

Manuscript
1861
19 Jun 1862

DAVIE COUNTY

Mocksville (Cont.)

(Davie)

Reconstruction

Mocksville

Manuscript
1865
1867



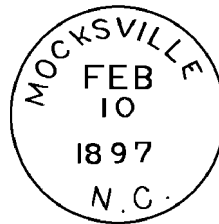
Type 3
25 mm Black
14 Oct 1869?



Type 4
25.5 mm Black
28 Apr 187x
4 Aug 1886



Type 5
27.5 mm Black
2 Jul 1891
5 Mar 1892



Type 6
28.5 mm Black
10 Feb 1897
3 Mar 1898



Type 7
31 mm Black
9 Sep 1901

DAVIE COUNTY

Mocksville (Cont.)

(Davie)



Type 8
30 mm Black
Metal Duplex Type H2
6 Aug 1901
20 Oct 1916



Type 9
32 mm Black
Non-standard Postmark
Duplex Horizontal Bar (9)
26 Oct 1903
28 Oct 1903



Type 10
23 mm Black
Columbia Machine
Type G 2W
14 Sep 1920
15 Mar 1922

Type 11
23 mm Black
Columbia Machine
Type G 1W
21 Dec 1926
24 Aug 1928

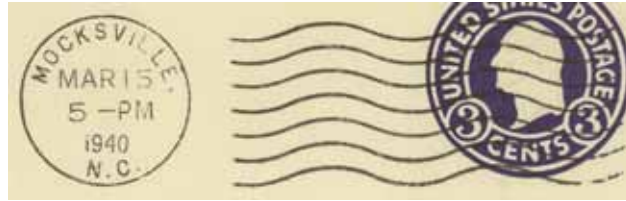


Type 12
30 mm Black
Metal Duplex Type H2
19 May 1938
7 Dec 1951

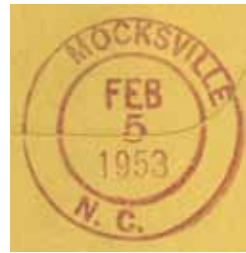
DAVIE COUNTY

Mocksville (Cont.)

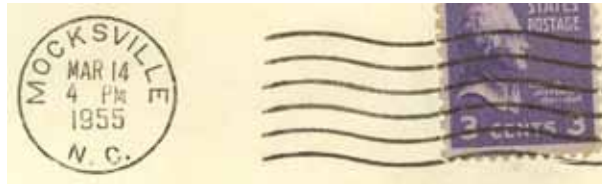
(Davie)



Type 13
22.5 mm Black
International Machine
Type AT/S 2722
5 Aug 1939
21 Feb 1951



Type 14
29 mm Magenta
5 Feb 1953



Type 15
21 mm Black
Universal Machine
Type DT 300
1 Feb 1952
17 Oct 1956



Type 16
21 mm Black
Universal Machine
Type DT 300 (smaller letters)
7 Jun 1960
28 Dec 1964



Type 17
30 mm Black
Metal Duplex Type H2
20 Jun 1957



Type 18
35.5 mm Black
6 Nov 1958
7 Jan 1959

DAVIE COUNTY

Mocksville (Cont.)

(Davie)



Type 19
21 mm Black
Universal Machine
Type DTSz 300 (27028)
11 Oct 1966
6 May 1997



Type 20
33 mm Black
1963 Type F/2 4-Bar (27028)
16 Apr 1971
10 Jul 1987



Type 21
30 mm Magenta
20 Jun 1985



Type 22
28.5 mm Red
Self-Inking Postmarker (27028)
7 Dec 1989



Type 23
33.5 mm Black
Self-Inking Postmarker
Type 3A (27028)
17 Apr 1992

DAVIE COUNTY

Mocksville (Cont.)

(Davie)



Type 24
31.5 mm Black
Self-Inking Postmarker
Type 1B (27028)
10 Apr 1993



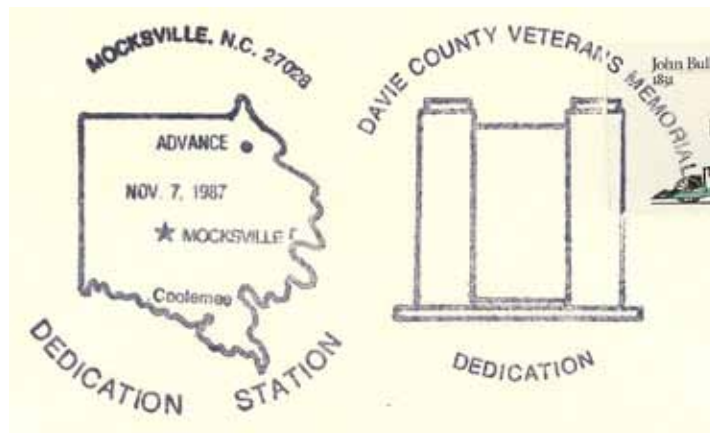
Type 25
34.5 mm Black
Self-Inking Postmarker
Type 3A (27028)
11 Aug 1997



Type 26
35.5 mm Red
Self-Inking Postmarker (27028)
30 Dec 2006

Temporary Station Cancels

Davie County Veterans Memorial Station



Type 1
88 x 51.5 mm Black
(27028)
7 Nov 1987

DAVIE COUNTY

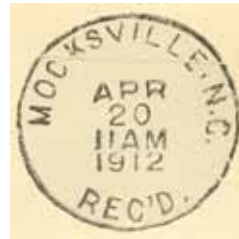
Mocksville (Cont.)

(Davie)

Receiving datestamp



Type R1
27.5 mm Black
31 Dec 1898
13 Mar 1899



Type R2
29 mm Black
12 Mar 1908
20 Apr 1912

Rural Free Delivery



Type 1N(1) Black
18 May 1905
16 Apr 1908

Type 2B(2)
1903



Type 2J(3) Black
22 Aug 1907
17 Feb 1908



Type 8C(2) Black
18 Apr 1904
11 Sep 1905

DAVIE COUNTY

Mocksville (Cont.)

(Davie)

Rural Free Delivery (Cont.)

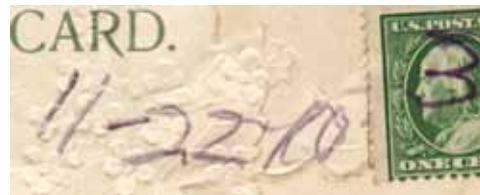


Type 8C(5) Magenta
3 Jan 1907

Type 8C (5) Black
28 Jan 1907
14 Apr 1908



Type 11C (1) Purple
2 Feb 1910



Type 11C (3) Purple
22 Nov 1910



Type 11D (1) Purple
22 Nov 1910

Nestor

(Davie)

Enoch Jarvis	7 May 1886
Francis M. Hendricks	2 Mar 1887
William A. Langston	9 Jan 1891
John H. Sprinkle	10 Jun 1902
John E. Davis	15 Jan 1904
Lula Green	15 Sep 1904
Discontinued	15 May 1905
Mail to Cana	



Type 1
28.5 mm Black
18 Feb 1893

DAVIE COUNTY

Nestor (Cont.)

(Davie)

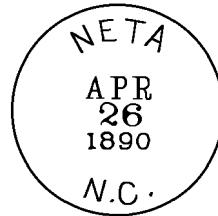


Type 2
28.5 mm Black
11 Aug 1894
15 Feb 1900

Neta

(Davie)

Hattie C. Young 9 Jan 1890
Discontinued 13 May 1892
Papers to Pino



Type 1
28 mm Black
26 Apr 1890

Pino

(Davie)

Daniel Eaton 9 Jul 1890
Thomas H. Redman 23 May 1898
Daniel Eaton 28 Sep 1900
Discontinued 30 Apr 1906
Mail to Mocksville



Type 1
27.5 mm Black
12 Nov 1891
20 Oct 1897

Redland

(Davie)

Mary J. Smith 29 Mar 1892
Sanford R. Smith 9 Feb 1899
Discontinued 30 Jun 1902
Sanford R. Smith 23 Aug 1902
Discontinued 29 Sep 1906
Mail to Advance



Type 1
27.5 mm Black
27 Apr 1895

DAVIE COUNTY

Selena

(Davie)

John M. Blount 21 Oct 1889
 Name changed to **Bailey** 19 Apr 1890

Sheffield

(Davie)

Thomas M. Smith 1 Feb 1893
 Discontinued 2 Jan 1907
 Mail to Harmony, Iredell County

Smith Grove, from Rowan County

(Davie)

Isham P. Ellis	20 Dec 1836
Discontinued	10 Jul 1839
Enoch G. Clouse	15 Aug 1846
Discontinued	28 Aug 1850
Enoch G. Clouse	5 Sep 1850
Albert Sheck	20 Jan 1853
A. Sheck, CSA	6 Jul 1861
CSA office closed on or before	30 Apr 1865
John Sheck	16 Jan 1866
Emiline Smith	13 Feb 1866
M. D. Kimbrough	13 Jun 1866
Rebecca C. Rich	26 Jun 1866
John Sheck	22 Sep 1868
Enoch G. Clouse	30 Dec 1869
William H. Hunter	31 Mar 1873
Leon H. Cash	20 Apr 1874
William H. Hunter	8 Jul 1875
John B. Nash	30 Jul 1877
Leander A. Clouse	11 Nov 1890
Mary E. Swing	7 Dec 1891
Sallie A. Osborne	31 Jul 1896
Nola S. Sheck	20 Nov 1901
Order rescinded	10 Apr 1902
Sallie A. Osborne continued	10 Apr 1902
Discontinued	29 Sep 1906
Papers to Advance	

Confederate

Smith Grove NC

Manuscript
 20 Jun 1862
 8 Jul 1864



Type 1
 26 mm Black
 30 Jan 1863

Reconstruction

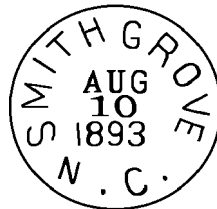


Type 1
 26 mm Black
 6 Mar 186x

DAVIE COUNTY

Smith Grove (Cont.)

(Davie)



Type 2
28 mm Black
10 Aug 1893



Type 3
28 mm Black
4 Jul 1898
22 Mar 1900

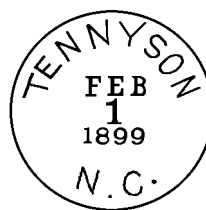


Type 4
28.5 mm Black
Doane Type 2-?
30 Jan 1906

Tennyson

(Davie)

Bettie C. Hendricks 6 Aug 1891
Mary M. Vernon 6 Aug 1898
Discontinued 31 May 1906
Mail to Mocksville



Type 1
27 mm Black
1 Feb 1899

Wells

(Davie)

John C. Harris 10 Feb 1899
Dewitt C. Howard 27 Jul 1900
Discontinued 29 Sep 1900
Papers to Mocksville