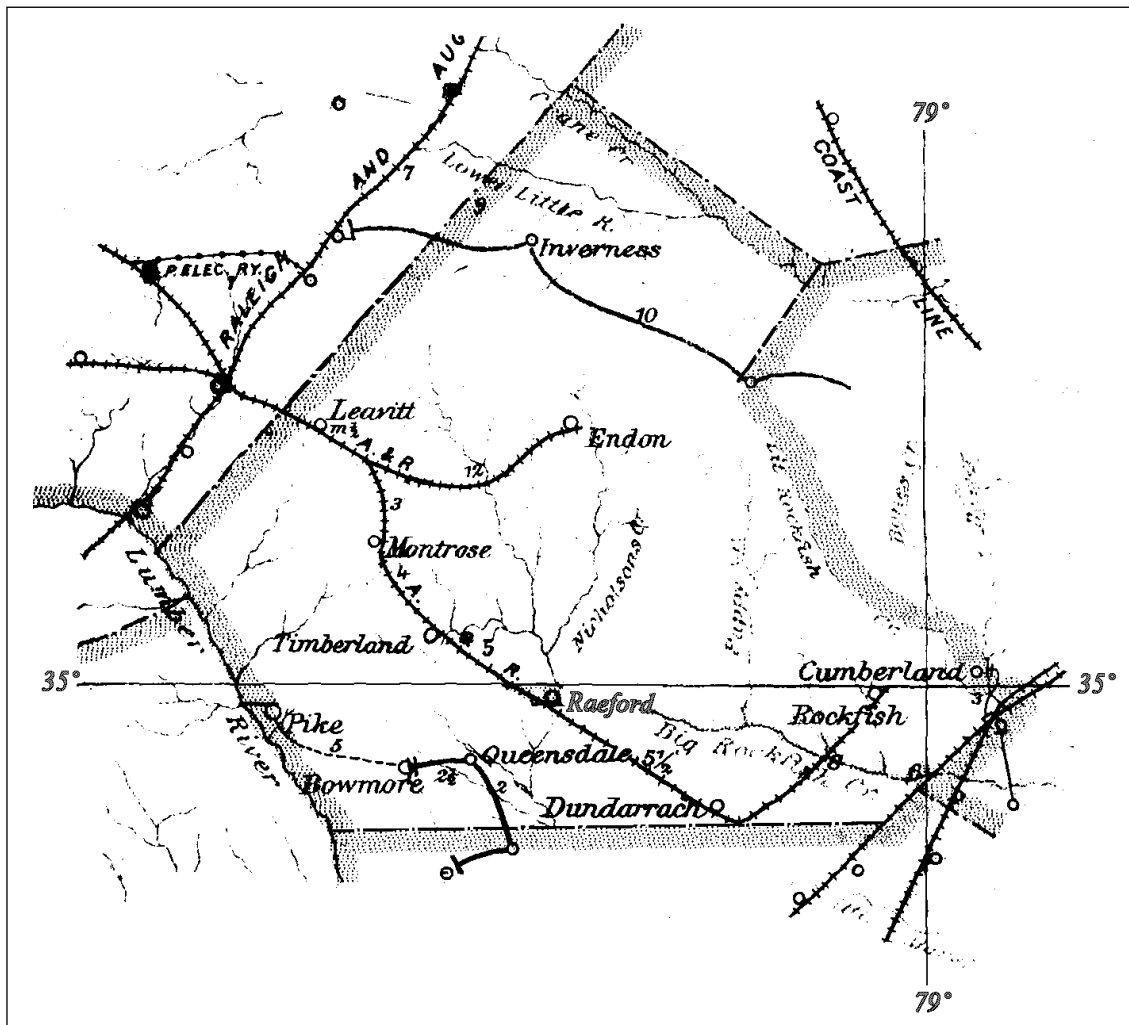


HOKE COUNTY

Formed on 17 February 1911 from Cumberland and Robeson Counties

Number of Post Offices - 11
Number with postmarks known - 8



HOKE COUNTY

Argyle, from Cumberland County

(Hoke)

Archie B. McFadyn 17 Feb 1911
Discontinued 15 Aug 1918
Mail to Manchester, Cumberland County

Ashley Heights

(Hoke)

Duncan H. Johnson 3 Apr 1919
Myrtie L. Johnson, Acting 20 Apr 1938
Myrtie L. Johnson 23 May 1938
Discontinued 31 May 1953
Mail to Aberdeen, Moore County



Type 1
32.5 mm Black
1925 Type C1 4-Bar
26 May 1932
14 Dec 1935



Type 2
33.5 mm Black
1936 Type F/1 4-Bar
30 May 1953
31 May 1953

Dundarrach, from Robeson County

(Hoke)

Luther A. McInnis 17 Feb 1911
Alexander McMillan 2 May 1911
James B. McKenzie, Acting 15 Sep 1923
James B. McKenzie 29 Aug 1923
Luther A. McInnis, Acting 14 Aug 1928
Luther A. McInnis 8 Sep 1928
Discontinued 30 Jun 1932
Mail to Shannon, Robeson County

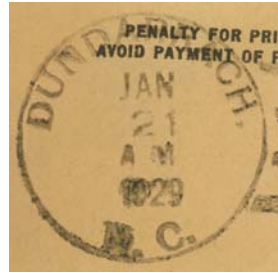


Type 1
32.5 mm Black
1910 Type B 4-Bar
27 Jun 1913

HOKE COUNTY

Dundarrach (Cont.)

(Hoke)



Type 2
33 mm Black
1925 Type C/1 4-Bar
21 Jan 1929

Inverness, from Cumberland County

(Hoke)

John H. Priest 17 Feb 1911
Discontinued 15 Nov 1912
Mail to Manly, Moore County

Leavitt, from Cumberland County

(Hoke)

George D. Sayer 17 Feb 1911
Discontinued 15 Mar 1912
Mail to Aberdeen, Moore County

Lobelia, from Cumberland County

(Hoke)

Daniel McGill 17 Feb 1911
John W. Smith 3 Sep 1912
Discontinued 31 Mar 1919
Mail to Vass, Moore County



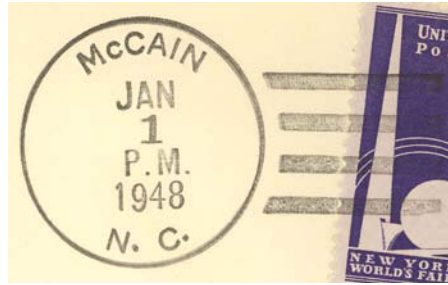
Type 1
29 mm Black
6 Jun 1907
9 Mar 1912

HOKE COUNTY

McCain, name changed from Sanatorium

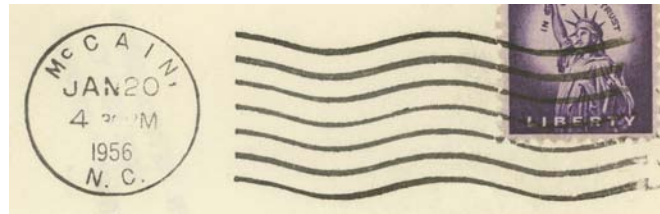
(Hoke)

Ernest B. Satterwhite	1 Jan 1948
Irene E. Isreal, Acting	23 Sep 1961
Eli Britton Jr. Officer-In-Charge	23 Jan 1976
Edna S. Williamson Officer-In-Charge	5 Nov 1976
Alvin T. Terry	13 Aug 1977
Edna S. Williamson Officer-In-Charge	30 Dec 1977
Mrs. Janice H. Mobley	15 Jul 1978
Cyrus B. Israel Officer-In-Charge	1 Oct 1982
Discontinued	17 Mar 1984

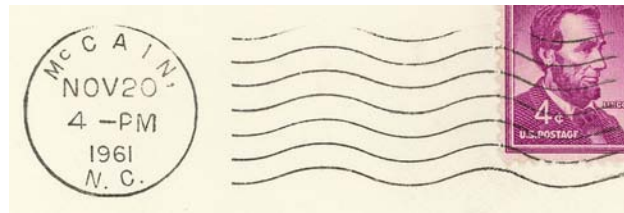


Type 1
32.5 mm Black
1936 Type F/1 4-Bar
1 Jan 1948

Became Community Post Office of Raeford



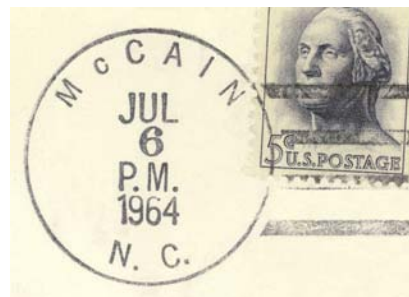
Type 2
23 mm Black
International Machine
Type AT/S 2711
5 Mar 1948
20 Jan 1956



Type 3
23 mm Black
International Machine
Type AT/S 2721
23 Jan 1959
20 Nov 1961



Type 4
33 mm Black
1936 Type F/1 4-Bar
10 Jan 1963

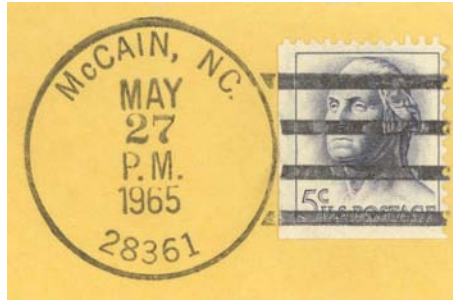


Type 5
33.5 mm Black
1936 Type F/1 4-Bar
6 Jul 1964

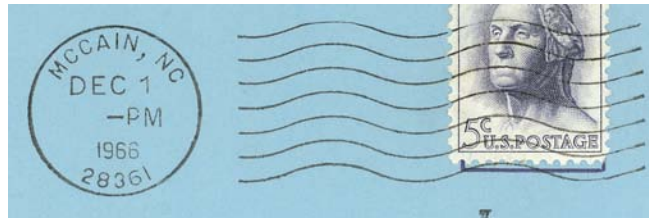
HOKE COUNTY

McCain (Cont.)

(Hoke)



Type 6
34 mm Black
1963 Type F/2 4-Bar (28361)
27 May 1965



Type 7
23 mm Black
International Machine
Type ATS/z 2721 (28361)
1 Aug 1966
14 Jul 1983



Type 8
32.5 mm Black
1963 Type F/2 4-Bar (28361)
28 May 1975

Raeford, from Cumberland County

(Hoke)

Anne C. Currie, Acting	17 Feb 1911
Neill McFayden	23 Feb 1911
Lacy M. Clark	25 Feb 1915
Lacy F. Clark	28 Jul 1919
George W. Cox, Acting	1 Aug 1923
George W. Cox	19 Dec 1923
Lacy F. Clark, Acting	22 Apr 1936
Lacy F. Clark	13 May 1936
Charles E. Morrison, Acting	17 Dec 1952
Daniel C. Cox, Sr., Acting	30 Apr 1953



Type 1
30 mm Black
Metal Duplex Type H2
17 Sep 1911
15 Sep 1915



Type 2
23 mm Black
Columbia Machine
Type G 1W
26 Mar 1927
23 Mar 1942

Daniel C. Cox, Sr.	18 Mar 1954
Charles Edward Morrison, Acting	8 Nov 1963
Charles Edward Morrison	19 Aug 1964

HOKE COUNTY

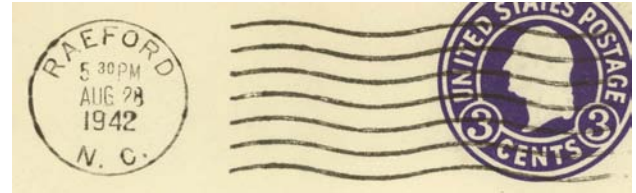
Raeford (Cont.)

(Hoke)

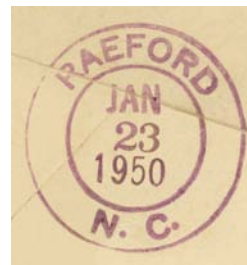
Louis Steve Holden	14 Sep 1996
Christa N. Engle	14 Jul 2001
James G. Dunnagan Officer-In-Charge	1 Dec 1974
Joseph D. Carver	26 Apr 1975
Greg Rhiner Officer-In-Charge	20 Jan 1987
Clara B. Robinson	9 May 1987
Clara B. Hurte (marriage)	4 Apr 1992
Clara B. Robinson	12 Dec 1992
Alice C. Roache Officer-In-Charge	27 Jan 2006
Michael Lee Sharp Officer-In-Charge	17 Jul 2006
Michael Lee Sharp	3 Feb 2007
Kathy McGirt Officer-In-Charge	14 Jan 2008
Wanda G. Marvell	11 Oct 2008
Alice C. Roache	16 Jul 2011
Eryc Lamont Hutto	5 Oct 2013
Linda M. Cooper	19 Sep 2015
Kimberly J. Joly Officer-In-Charge	25 Jun 2016
Carla A. Roache	20 Aug 2016
Charles F. Burke III Officer-In-Charge	1 Aug 2019
Peter J. Huntley	29 Feb 2020



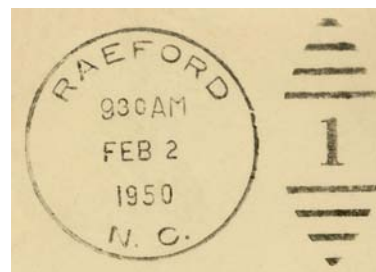
Type 3
30 mm Black
Metal Duplex Type H2
9 May 1928
7 Oct 1942



Type 4
21 mm Black
Universal Machine
Type DT 200K
28 Aug 1942
9 Mar 1951



Type 5
29.5 mm Magenta
23 Jan 1950
29 Sep 1954



Type 6
30.5 mm Black
Metal Duplex Type ?
2 Feb 1950
2 Nov 1962



Type 7
21 mm Black
Universal Machine
Type DT 300
7 Oct 1953
21 Oct 1960

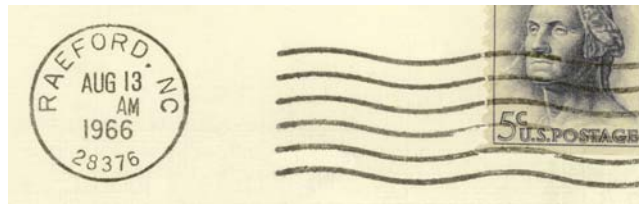
HOKE COUNTY

Raeford (Cont.)

(Hoke)



Type 8
32 mm Black
Hanley hand-held roller
6 Dec 1965



Type 9
21 mm Black
Universal Machine
Type DTS/z 300 (28376)
13 Aug 1966
12 Jun 1967



Type 10
32.5 mm Black
1963 Type F/2 4-Bar (28376)
15 Apr 1971
22 Aug 1974



Type 11
28.5 mm Red
Self-Inking Postmarker (28376)
12 Oct 1990



Type 12
38 mm Red
Self-Inking Postmarker (28376)
13 Apr 1991

HOKE COUNTY

Raeford (Cont.)

(Hoke)



Type 13
28.5 mm Red
Self-Inking Postmarker (28376)
20 Sep 1993



Type 14
44.5 mm Red
Self-Inking Postmarker
(28376-9998)
27 Feb 2003

Station Cancels

McCain Contract Post Office
17 Mar 1984
19 Aug 2002



Type 1
29 mm Magenta
20 Aug 1985
14 Apr 1992



Type 2
35.5 mm Red
Self-Inking Postmarker (28361)
8 Apr 1999

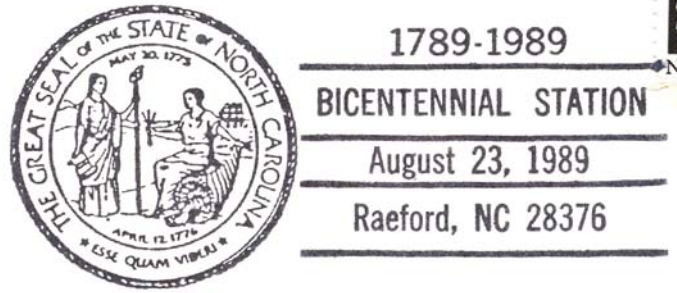
HOKE COUNTY

Raeford (Cont.)

(Hoke)

Temporary Station Cancels

Bicentennial Station



Type 1
87 x 37.5 mm Black
(28376)
23 Aug 1989

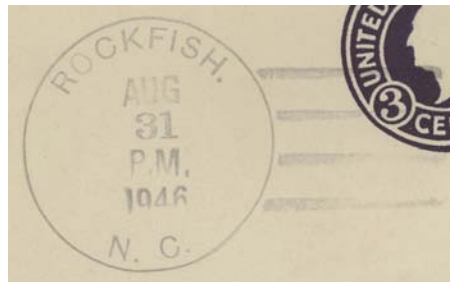
Rockfish, from Cumberland County

(Hoke)

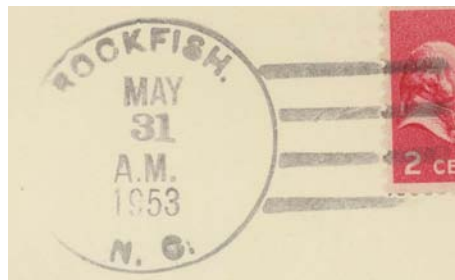
Mary H. Boseman	17 Feb 1911
Isabel R. Ritter, Acting	1 May 1942
Isabel R. Ritter	18 Jul 1942
Discontinued	30 Jun 1943
Lillie Wood, Acting	15 Jul 1943
Lillie Wood	9 Nov 1943
Discontinued	31 May 1953
Mail to Fayetteville, Cumberland County	



Type 1
32.5 mm Black
1910 Type B 4-Bar
21 Jun 1916



Type 2
33.5 mm Black
1936 Type F/1 4-Bar
31 Aug 1946
22 Nov 1949



Type 3
33 mm Black
1936 Type F/1 4-Bar
31 May 1953

HOKE COUNTY

Rockfish, from Cumberland County

(Hoke)



Type 4
30 mm Magenta
31 May 1953

Sanatorium

(Hoke)

Hughes B. Hoyle	22 Apr 1914
James W. Reid	28 Dec 1914
Lewis B. McBrayer	25 May 1915
Herbert O. Sink, Acting	1 Feb 1924
Herbert O. Sink	22 Apr 1924
Ernest B. Satterwhite, Acting	11 Jun 1926
Ernest B. Satterwhite	14 Dec 1926
Name changed to McCain	1 Jan 1948



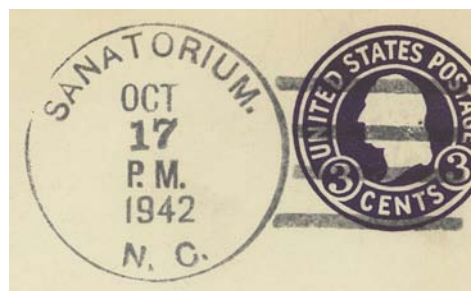
Type 1
31.5 mm Black
Metal Duplex
Type Scarab
20 Jan 1925



Type 2
22 mm Black
Columbia Machine
Type G 2W
27 Feb 1920
14 Jun 1920



Type 3
23 mm Black
International Machine
Type AT/S 2711
9 Jan 1939
9 Mar 1942



Type 4
34.5 mm Black
1936 Type F/1 4-Bar
17 Oct 1942
23 Oct 1943

HOKE COUNTY

Sanatorium (Cont.)

(Hoke)



Type 5
33 mm Black
1936 Type F/1 4-Bar
31 Dec 1947

Timberland, from Cumberland County

(Hoke)

Neill A. McDonald	17 Feb 1911
Minnie B. McDonald, Acting	1 Feb 1940
Minnie B. McDonald	4 Nov 1940
Discontinued	31 Dec 1948
Mail to Raeford	



Type 1
32 mm Black
1910 Type B 4-Bar
3 Jul 1917



Type 2
34 mm Black
1931 Type C/2 4-Bar
12 Aug 1938
30 Oct 1941



Type 3
34 mm Black
1936 Type F/1 4-Bar
31 Dec 1948