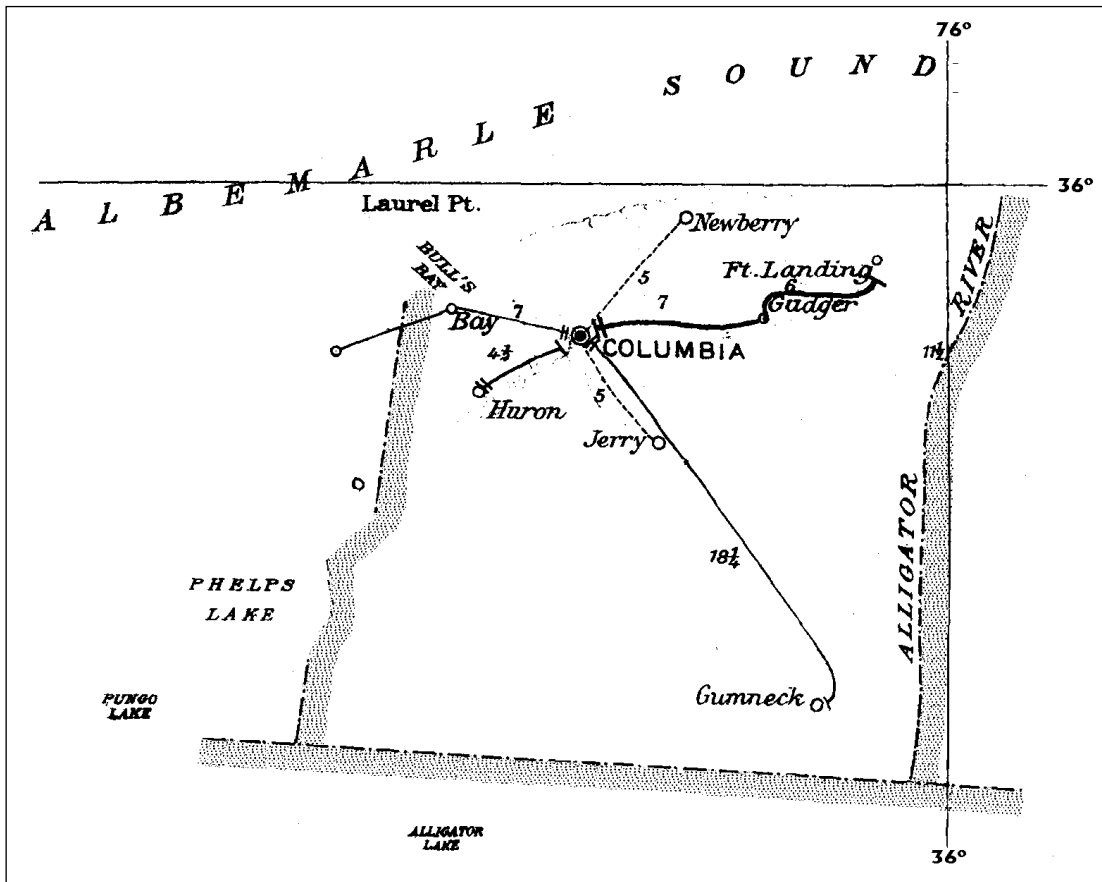


TYRRELL COUNTY

Established in 1729
from Bertie, Chowan, Currituck, and Pasquotank Counties

Number of Post Offices - 23
Number with postmarks known - 11



TYRRELL COUNTY

Alligator

(Tyrrell)

John S. Nelson	9 Dec 1885
George A. Hussey	18 Nov 1887
A. B. Lewis	4 Aug 1888
Discontinued	9 Jan 1889
Mail to Fairfield, Hyde County	
Benjamin Spruill	16 Apr 1904
Washington W. Belangia	18 Jul 1905
Discontinued	30 Sep 1907
Mail to Fort Landing	

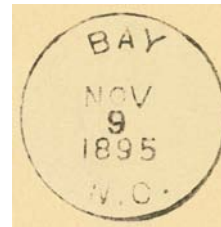


Type 1
28 mm Black
Doane Type 2-?
16 Apr 1906
29 Jul 1907

Bay

(Tyrrell)

Cicero J. Norman	10 Dec 1883
Thomas S. Downing	21 May 1886
Charles H. Hough	23 Sep 1895
Adelia A. Roughton	27 Feb 1899
Alexzener Forbes	30 Nov 1903
Samuel L. Alexander	21 Dec 1904
Discontinued	31 May 1905
Mail to Columbia	



Type 1
27.5 mm Black
9 Nov 1895



Type 2
28 mm Black
23 Jul 1901



Type 3
32 mm Black
Doane Type 3-?
19 Feb 1907
9 May 1909

TYRRELL COUNTY

Columbia C.H., Columbia

(Tyrrell)

James B. White	25 Mar 1811
William Kemp	1 May 1820
Jeremiah Wynne	27 Feb 1819
Baldwin W. Halsey	26 Oct 1819
Name changed to Whitesville	13 Mar 1823
Joseph Halsey	21 Oct 1826
John A. Shaw. Sr.	5 Aug 1828
Parker Jordan	8 Jul 1831
Franklin F. Fagan	9 Sep 1834
Henry E. Lewis	2 Apr 1835
Nathan A. Brickhouse	19 Jan 1839
Joseph T. Sawyer	25 Nov 1842
Henry H. Davenport	24 May 1843
Abner Alexander	16 Oct 1844
Joseph T. Sawyer	15 Oct 1845
James F. Davenport	8 Nov 1847
Isaac Casey	10 Jan 1851
Leonard L. Hafiel	14 Dec 1853
William W. Walker	7 Dec 1854
William D. Carstaphan	9 Jul 1857

Columbia N.C.
4th Oct

Manuscript
12 Aug 1824
4 Oct 1826

Columbia N.C.
Feb. 9th 1841

Manuscript
9 Feb 1841
1 Sep 1841

Columbia n.c.
aug 11

Manuscript
11 Aug 1848
4 Oct 1850

CSA postmaster unknown

William S. Spinell	19 Sep 1865
Eliza Brickhouse	2 Mar 1866
W. A. Lindsay	23 Apr 1867
William H. Purcell	17 Dec 1867
Daniel E. Lee	29 Jan 1868
E. P. Owens	17 Sep 1868
Discontinued	24 Nov 1868
Eustace W. Parker	9 Dec 1868
Patrick H. Wilkins	14 Feb 1870
William S. Spruill	12 Feb 1873
Camillus E. Tatem	8 Jan 1886
Arthur H. Tatem	22 Mar 1887
Lemuel Basnight	6 Jun 1889
Warren Brickhouse	8 Apr 1893
Maynard Davis	1 May 1897
Harriet V. P. Spruill	3 May 1901
Isadore S. Alexander	11 Jul 1902
Robert S. Kohloss	15 Dec 1910
William S. Carawan	20 Jan 1914
B. Ray Cohoon, Acting	17 Sep 1921
William S. Carawan	19 Nov 1921
B. Ray Cohoon, Acting	31 Jul 1923
B. Ray Cohoon	19 Mar 1924
Mrs. Effie A. Brickhouse, Acting	16 Jul 1936
Mrs. Effie A. Brickhouse	20 Dec 1937
James C. Griffin	25 Oct 1975
William P. Ezzell Officer-In-Charge	7 Apr 1978
Pender R. Lilley Officer-In-Charge	14 Jul 1978
George D. Bizzell	7 Oct 1978



Type 1
32.5 mm Red
25 Aug 1856

Columbia N.C. Oct 21

Manuscript
21 Oct 1859



Type 2
26 mm Red
1 May 1861

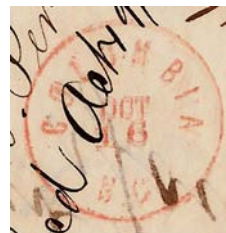
TYRRELL COUNTY

Columbia C.H., Columbia (Cont.)

(Tyrrell)

Cleveland Layne VanHorne Officer-In-Charge 22 Sep 1992
 Kenneth L. Stilton 26 Jun 1993
 Barbara T. Brabble Officer-In-Charge 1 Jun 2001
 Leamon O. Cooper 11 Aug 2001
 Jill J. Spencer Officer-In-Charge 28 Jan 2010
 Jill J. Spencer 22 May 2010
 Doug Wocel Officer-In-Charge 1 May 2012

Confederate

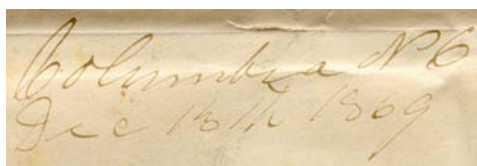


Type 2
 26 mm Red
 12 Jun 1861
 16 Oct 1861

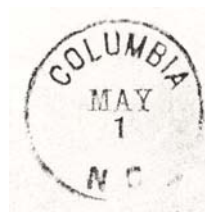
*Columbia MS
 Sept 31-64*

Manuscript
 12 Jul 186x
 31[sic] Sep 1864

Reconstruction



Manuscript
 13 Dec 1869



Type 3
 24 mm Black
 1 May 187x



Type 4
 26.5 mm Red
 5 Aug 187x
 19 Nov 1886



Type 4.5
 27 mm Black
 1 Sep 1881

TYRRELL COUNTY

Columbia C.H., Columbia (Cont.)

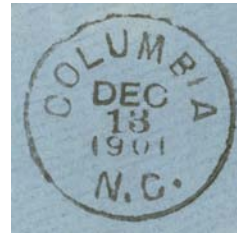
(Tyrrell)



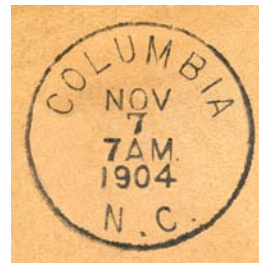
Type 5
27 mm Black
18 Oct 1889
5 Nov 1895



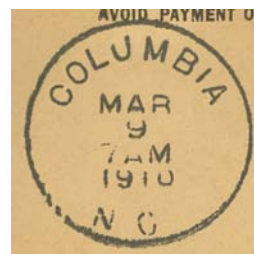
Type 6
28 mm Black
10 Jan 1899



Type 7
27.5 mm Black
20 Aug 1901
13 Dec 1901



Type 8
30 mm Black
(Large letters)
7 Nov 1904

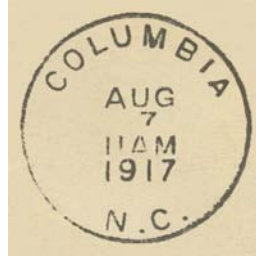


Type 9
30 mm Black
(Smaller letters)
22 Oct 1907
10 Sep 1910

TYRRELL COUNTY

Columbia C.H., Columbia (Cont.)

(Tyrrell)



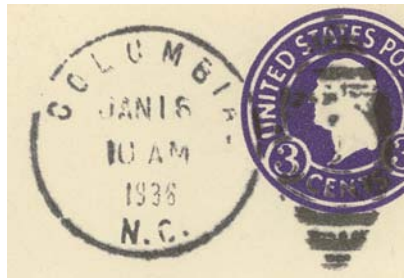
Type 10
30.5 mm Black
Metal Duplex Type H2
25 Oct 1916
7 Aug 1917



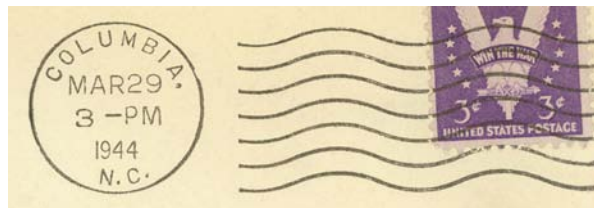
Type 11
31 mm Black
Metal Duplex Type H2
(6 bars)
7 Jul 1926



Type 12
30 mm Black
Metal Duplex Type H2
(7 bars)
3 Sep 1928



Type 13
30.5 mm Black
Metal Duplex Type E2
16 Jan 1936
3 Nov 1944

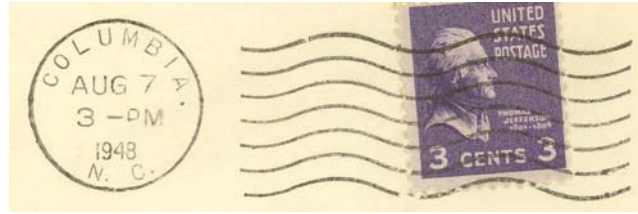


Type 14
23 mm Black
International Machine
Type AT/S 2721
(Narrow "N.C.")
28 Mar 1940
29 Mar 1944

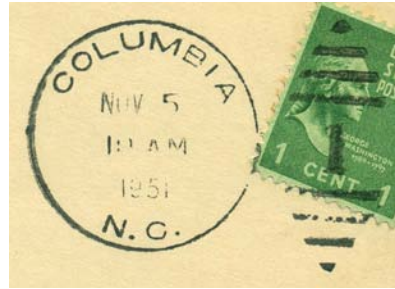
TYRRELL COUNTY

Columbia C.H., Columbia (Cont.)

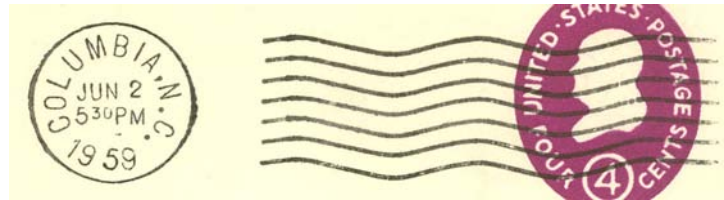
(Tyrrell)



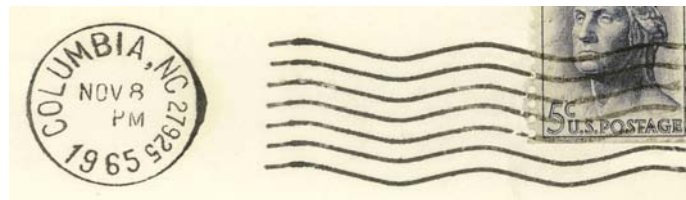
Type 15
 23 mm Black
 International Machine
 Type AT/S 2721
 (Wide "N.C.")
 10 Apr 1947
 9 Jul 1953



Type 16
 30.5 mm Black
 Metal Duplex Type ?
 5 Nov 1951
 22 Dec 1964



Type 17
 21.5 mm Black
 International Machine
 Type DT30
 25 Oct 1954
 25 May 1964



Type 18
 22 mm Black
 International Machine
 Type N30 (27925)
 8 Nov 1965
 11 Mar 1993



Type 19
 32.5 mm Black
 1963 Type F/2 4-Bar (27925)
 22 Oct 1975
 5 Dec 1978

TYRRELL COUNTY

Columbia C.H., Columbia (Cont.)

(Tyrrell)



Type 20
27.5 mm Magenta
22 Oct 1975



Type 21
35 mm Black
1963 Type F/2 4-Bar (27925)
29 May 1984



Type 22
33 mm Black
1963 Type F/2 4-Bar (27925)
5 Mar 1990
28 Nov 1995



Type 23
30.5 mm Red
Self-Inking Postmarker (27925)
4 Oct 2006

Registered



Type 1
29 mm Magenta
2 Jul 1951

TYRRELL COUNTY

Cross Landing

(Tyrrell)

William J. Phelps	13 Apr 1904
Discontinued	15 Feb 1905
Mail to Bay	

Fort Landing

(Tyrrell)

William J. Beasley	2 Apr 1856
William J. Beasley, CSA	date unknown
CSA office closed on or before	30 Apr 1865
Discontinued	6 Dec 1866
Zach Roughter	9 Sep 1873
Mrs. W. H. Haymore	5 Jan 1875
Joseph J. McClees	14 Apr 1875
Joseph A. Spruill	3 Jan 1882
Thomas Spruill	9 Nov 1886
Mann H. Basnight	1 Aug 1890
John B. Combs	24 Sep 1890
Arthur B. Combs	15 Apr 1907
Annie C. Combs	8 Aug 1914
Order rescinded	
Gillespie B. Holmes, Acting	17 Jan 1922
Gillespie B. Holmes	17 Feb 1922
Discontinued	15 May 1931
Mail to Columbia	



Type 1
28 mm Black
14 Sep 1883



Type 2
28 mm Black
22 Mar 1893
6 Mar 1902



Type 3
32.5 mm Magenta
1920 Type A/3 4-Bar
5 Jul 1923

TYRRELL COUNTY

Gudger

(Tyrrell)

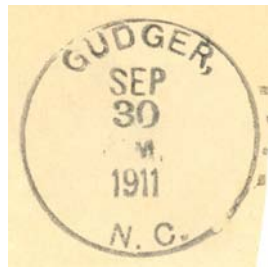
Jeremiah W. Howett	19 Jun 1888
James R. Wright	11 May 1889
Washington E. Bateman	30 Mar 1909
Discontinued	15 Jan 1912
Mail to Columbia	



Type 1
27.5 mm Black
17 Sep 1889
17 Sep 1901



Type 2
28.5 mm Black
25 Jul 1907



Type 3
31.5 mm Black
1906 Type A/1 4-Bar
30 Sep 1911

Gum Neck

(Tyrrell)

Charles McClees	23 Feb 1858
James W. Swain	16 Jul 1860
Ashbe Jones	7 Jan 1861
James W. Swain, CSA	date unknown
CSA office closed on or before	30 Apr 1865
Discontinued	11 Dec 1866
Hardy H. Liverman	11 Apr 1872
Joseph B. Liverman	29 Apr 1872
J. Charles Meekins	11 Mar 1873
Abner A. Coombs	14 May 1883
Benjamin F. Swindell	19 Jul 1893
Jessey L. Cooper	9 Jul 1897
Abner A. Coombs	12 Jul 1901
Don C. Sawyer	11 Aug 1905
Abner A. Combs	22 Dec 1911
Charles C. Jones	8 Apr 1914
Charlie C. Combs, Acting	26 Jan 1924
Charlie C. Combs	7 Oct 1924
Discontinued	15 Sep 1932
Mail to Columbia	

*Gum Neck N.C.
5/9 74*

Manuscript
9 May 1874



Type 1
27.5 mm Black
25 Jul 1891
21 Oct 1906

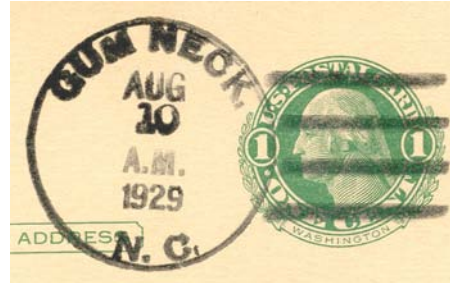
TYRRELL COUNTY

Gum Neck (Cont.)

(Tyrrell)



Type 2
 31.5 mm Black
 1908 Type A/2 4-Bar
 28 Mar 1911
 30 Aug 1911



Type 3
 33 mm Black
 1925 Type C/1 4-Bar
 10 Aug 1925
 15 Sep 1932
 33 mm Purple
 15 Sep 1932

Huron

(Tyrrell)

Jennie L. Lincoln	5 Mar 1900
Lena C. Swain	5 Mar 1907
Joseph S. Clough (declined)	15 Jan 1908
Discontinued	15 Aug 1908
Mail to Columbia	

Jerry

(Tyrrell)

William E. Spencer	9 Apr 1901
James W. Swain	17 Dec 1906
Joseph E. Reynolds	21 Feb 1910
Dora M. Swain	5 Dec 1913
Discontinued	31 Dec 1927
Mail to Columbia	



Type 1
 31.5 mm Black
 1906 Type A/1 4-Bar
 25 May 1908
 8 Jun 1911

TYRRELL COUNTY

Kilkenny

(Tyrrell)

George A. Hussey	7 Dec 1885
Discontinued	8 Jan 1887
Mail to Alligator	
W. J. Sawyer	3 Aug 1905
Order rescinded	17 Feb 1906

Leona

(Tyrrell)

Frank Armstrong	4 Sep 1882
Doctor Frank Armstrong	5 Oct 1882
Laura A. Armstrong	16 Sep 1886
Discontinued	8 Mar 1887
Mail to Gum Neck	

McKinley

(Tyrrell)

Robert J. Armstrong	13 Sep 1897
Discontinued	15 May 1901
Mail to Gum Neck	

Mon Swamp

(Tyrrell)

Clarice W. Liverman	24 Jan 1905
Clarice W. Parisher	3 Apr 1909
Fred S. Pinner	29 Mar 1910
Henry E. Cohoon	19 Aug 1913
Discontinued	15 Oct 1915
Mail to Gum Neck	



Type 1
29.5 mm Black
Doane Type 2-²
1 Jun 1908

TYRRELL COUNTY

Mon Swamp (Cont.)

(Tyrrell)

Type 2
31 mm Black
Doane Type 3-2
18 Jun 1908
15 Dec 1909



Type 3
32.5 mm Black
1908 Type A/2 4-Bar
9 Jun 1913
21 Aug 1915

Newberry

(Tyrrell)

Edward S. Sowers	2 Jan 1900
Order rescinded	27 Jul 1900
Benjamin L. Brickhouse	15 Mar 1901
Discontinued	30 Nov 1911
Mail to Columbia	

Pan

(Tyrrell)

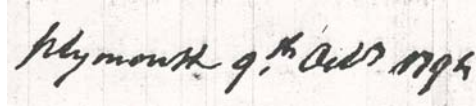
William P. Brickhouse	5 Jan 1883
John S. Sykes, Sr.	19 Mar 1883
Belcher S. Midgett	29 Aug 1884
Discontinued	20 Sep 1886
Mail to Leona	

TYRRELL COUNTY

Plymouth

(Tyrrell)

Martin R. Byrd 12 Jun 1792
 John Armistead 4 Aug 1797
 To Washington County 1799

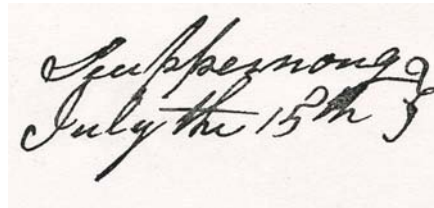


Manuscript
 9 Oct 1794
 10 Aug 1798

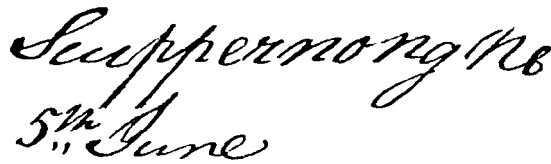
Scuppernong

(Tyrrell)

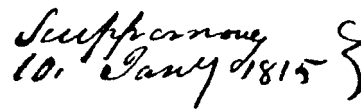
Robert Winn 7 Sep 1802
 Peter Wynne 1 Apr 1803
 Discontinued after 1819



Manuscript
 15 Jul 1803



Manuscript
 5 Jun 1807



Manuscript
 27 Sep 1814
 15 Jan 1819

Soundside

(Tyrrell)

James G. Brickhouse 15 Dec 1900
 Discontinued 30 Apr 1901
 Mail to Columbia

TYRRELL COUNTY

Southshore

(Tyrrell)

Washington C. Wright 11 Dec 1912
James R. Wright 28 Jan 1918
Discontinued 31 Aug 1922
Mail to Columbia



Type 1
32 mm Black
1910 Type B 4-Bar
15 Jan 1914

Springfield

(Tyrrell)

Hezekiah G. Spruill 25 Jan 1828
Discontinued 18 May 1830

Sunny

(Tyrrell)

Agustus W. Owens 14 Jul 1886
Discontinued 20 Nov 1890
Mail to Columbia

Warbler

(Tyrrell)

Addie Gibbs 27 Jun 1917
Discontinued 15 Oct 1932
Mail to Fairfield, Hyde County

TYRRELL COUNTY

Whitesville, name changed from Columbia

(Tyrrell)

Joseph White	13 Mar 1823
Name changed to Columbia	21 Oct 1826