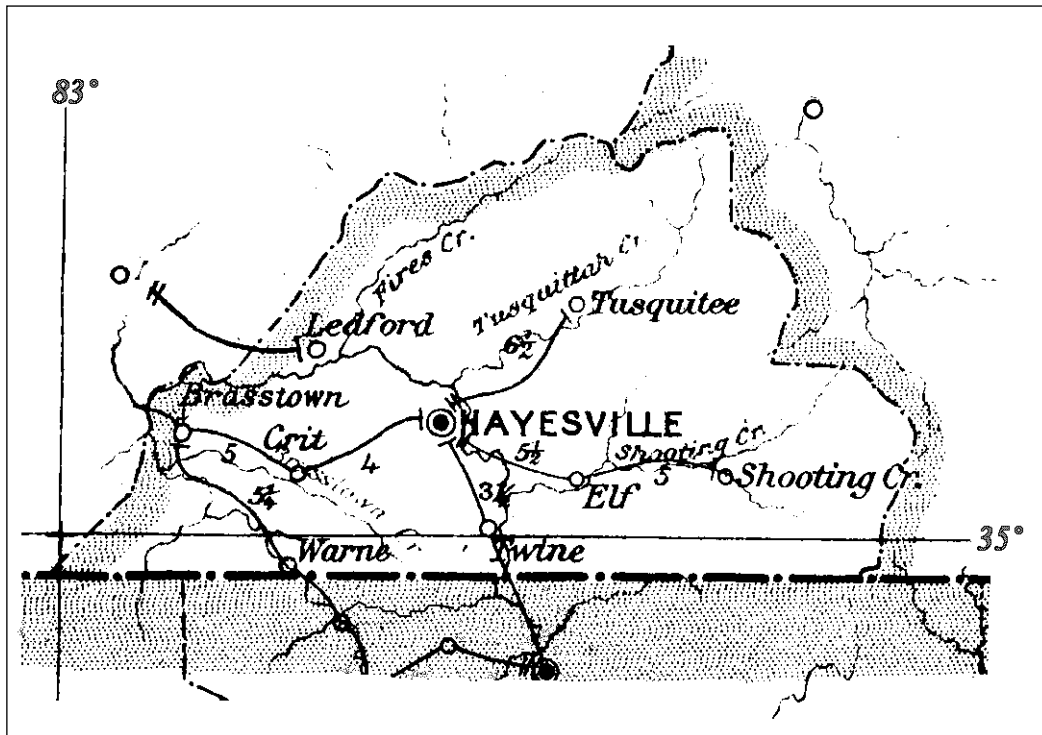


# CLAY COUNTY

Established 20 February 1861  
From Cherokee County

Number of Post Offices - 22  
Number with postmarks known - 10



## CLAY COUNTY

### Belzora

(Clay)

Caleb F. Neal                    29 Jul 1893  
 Andrew J. Green                31 Jan 1895  
 Discontinued                    23 Jun 1896  
 Papers to Ballew, Cherokee County

### Brasstown, from Cherokee County

(Clay)

Lee Baker                            15 Jul 1889  
 John H. Brendle                    11 Dec 1890  
 Sarah E. Brendle                    10 May 1895  
 James F. Arrant                    10 Nov 1897  
 Noria V. Arrant                    11 Nov 1903  
 Merritt A. Hampton                23 Jan 1909  
 Fred O. Scroggs                    13 Sep 1913  
 Bessie Scroggs                    23 Sep 1914  
 Julia M. Ledford                    28 Aug 1919  
 Mrs. Iowa Green, Acting            9 Mar 1925  
 Mrs. Iowa Green                    25 Apr 1925  
 Mrs. Margie P. Payne, Acting      30 Jun 1955  
 Herman M. Wilson, Acting        14 Apr 1961  
 Herman M. Wilson                15 Sep 1961  
 Susan Robinson Officer-In-Charge   1 Apr 1983  
 Frederick L. Anderson            25 Jun 1983  
 Ronald Glenn Story Officer-In-Charge 13 Mar 1987  
 Jewell M. Bowles                20 Jun 1987  
 Thomas E. Wimpey Officer-In-Charge 4 May 1993  
 Thomas E. Wimpey                11 Dec 1993  
 Robert L. Hughes                30 Apr 2005  
 Converted to a Level 6 (6-hour)  
 Remotely Managed Post Office of  
 Hayesville                            17 Nov 2012



Type 1  
 32.5 mm Black  
 Doane Type 3-2  
 15 Feb 1907  
 3 Aug 1912



Type 2  
 34 mm Black  
 1931 Type C/2 4-Bar  
 21 Jan 1935



Type 3  
 33 mm Black  
 1936 Type F/1 4-Bar  
 13 Oct 1940  
 19 Apr 1951



Type 4  
 33 mm Black  
 1936 Type F/1 4-Bar  
 23 Jan 1954  
 18 Oct 1955

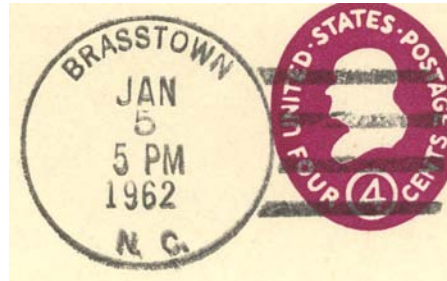
CLAY COUNTY

Brasstown (Cont.)

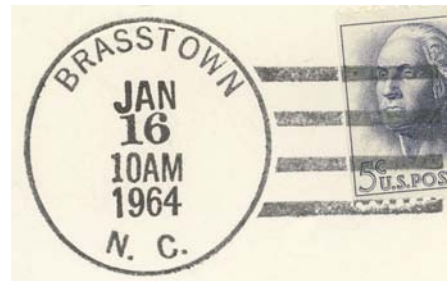
(Clay)



Type 5  
29.5 mm Magenta  
25 Sep 1954



Type 6  
33.5 mm Black  
1936 Type F/1 4-Bar  
5 Jan 1962



Type 7  
33.5 mm Black  
1936 Type F/1 4-Bar  
30 Nov 1963  
16 Jan 1964



Type 8  
33.5 mm Black  
1963 Type F/2 4-Bar (28902)  
29 Nov 1965



Type 9  
31 mm Black  
1963 Type F/2 4-Bar (28902)  
6 Dec 1966  
14 Jan 1975

CLAY COUNTY

Brasstown (Cont.)

(Clay)



Type 10  
34 mm Black  
Self-Inking Postmarker  
Type 4A (28902)  
12 Jan 1993  
4 May 1995



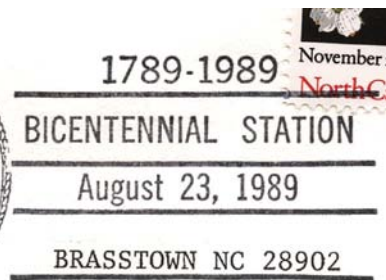
Type 11  
38.5 mm Black  
Self-Inking Postmarker (28902)  
2 Dec 2003



Type 12  
29.5 mm Red  
Self-Inking Postmarker (28902)  
7 Sep 2006

Temporary Station Cancels

Bicentennial Station



Type 1  
86 x 37 mm Black  
(Post office name typed in)  
(28902)  
23 Aug 1989

## CLAY COUNTY

### Clarence

(Clay)

Elbert V. McConnell      14 Aug 1901  
Discontinued              14 Oct 1905  
Mail to Hayesville



Type 1  
28 mm Black  
16 Apr 1904  
11 Feb 1905

### Corundum

(Clay)

Rufus A. Bingham          7 Jan 1903  
John W. Chambers        18 Jan 1904  
William H. Ghormley      8 Feb 1905  
Discontinued              31 Mar 1905  
Mail to Shooting Creek

### Crit

(Clay)

William H. H. Howard      27 Jul 1898  
Emma C. Lovin              3 Jan 1901  
Thomas B. Passmore       14 Aug 1903  
Cordie A. Padgett         31 Mar 1905  
Discontinued              15 Jun 1906  
Mail to Hayesville

### Cullakane

(Clay)

Elizabeth L. Passmore      7 Jan 1889  
John Reaves                15 Mar 1890  
Discontinued              8 Oct 1890  
Papers to Shooting Creek

## CLAY COUNTY

### Elf

(Clay)

Bascome A. Ledford	31 Jul 1883
Lawrence C. Patton	4 Oct 1883
W. B. Pass	27 Apr 1885
Luther S. Ledford	11 Dec 1885
Discontinued	3 May 1886
Papers to Shooting Creek	
Harrison S. Black	12 Jun 1888
George M. Johnson	17 Sep 1889
W. A. Loyd	18 Oct 1893
Order rescinded	23 Jun 1894
George M. Johnson continued	23 Jun 1894
Helen A. Lance	6 Mar 1895
Hattie Ledford	14 Jan 1898
Sallie B. Ledford	3 Jan 1899
John W. Ledford	3 Jan 1901
Royal J. Buchanan	17 Mar 1902
John B. White	15 Aug 1904
Lena White	7 Aug 1905
James W. Penland	12 Dec 1908
Iola Penland	14 Sep 1909
Discontinued	31 Dec 1911
Mail to Hayesville	



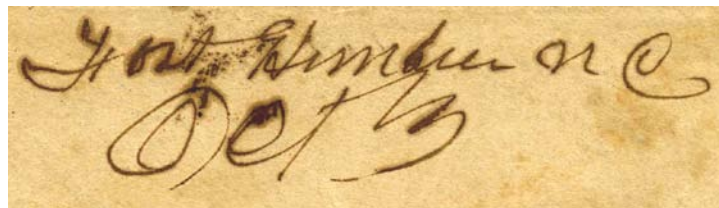
Type 1  
27 mm Black  
21 Mar 1899

### Fort Humbee, from Cherokee County

(Clay)

Robert B. Chambers, CSA	26 Nov 1861
CSA office closed on or before	30 Apr 1865
Federal office discontinued	6 Dec 1866

Confederate



Manuscript  
3 Oct 186x

### Hayesville, formerly Fort Humbee

(Clay)

John W. Duncan	7 May 1868
Jacob Brooks	18 Aug 1870
William H. McClure	6 Jan 1873
Lucius H. McClure	14 Jan 1875
William B. Pass	3 May 1878
Green H. Haigler	8 Jul 1884
A. B. Ledford	17 May 1889
James F. Shearer	17 Jul 1889
Alexander B. Ledford	6 Oct 1890
Green H. Haigler	22 May 1893
George M. Johnson	2 Jun 1897
Edna J. Anderson	24 Feb 1904
Everette R. Crawford	24 Jun 1914
John A. Chambers, Acting	15 Jul 1924
John A. Chambers	26 Jan 1925



Type 1  
24 mm Black  
16 Apr 1878



Type 2  
26.5 mm Black  
24 Oct 189x  
1893

# CLAY COUNTY

## Hayesville (Cont.)

(Clay)

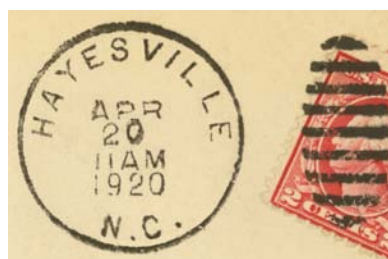
Frederick R. Jones	1 Feb 1934
Ruel P. White, Acting	30 Jun 1956
Willis Q. Moore, Acting	7 Feb 1961
Willis Q. Moore	21 Sep 1961
Howard C. Martin Officer-In-Charge	20 Jun 1975
Howard C. Martin	22 Nov 1975
Melvin R. Frye Officer-In-Charge	20 Aug 1982
William A. Braisted	8 Jan 1983
Douglas E. Hughey Officer-In-Charge	8 Oct 1986
Fredrick Lynwood Anderson	28 Feb 1987
Robert L. Hughes Officer-In-Charge	11 Aug 1994
Robert L. Hughes	15 Oct 1994
Kevin C. Claus Officer-In-Charge	29 Apr 2005
Kevin C. Claus	23 Jul 2005
Judy G. Paxton Officer-In-Charge	1 Jun 2007
Cheryl E. Stewart Officer-In-Charge	4 Feb 2008
Cheryl E. Stewart	5 Jul 2008
Sherry E. Garrett	13 May 2017



Type 3  
27.5 mm Black  
31 Dec 1897  
6 Aug 1900



Type 4  
30 mm Black  
Metal Duplex Type H2  
20 Apr 1903  
4 Dec 1912



Type 5  
29 mm Black  
Metal Duplex Type H2  
20 Apr 1920  
17 Jan 1922



Type 6  
26 mm Black  
Metal Duplex Type E2  
14 Aug 1923



Type 7  
32.5 mm Black  
1925 Type C/1 4-Bar  
4 Apr 1936

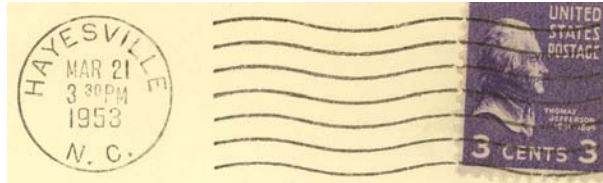
CLAY COUNTY

Hayesville (Cont.)

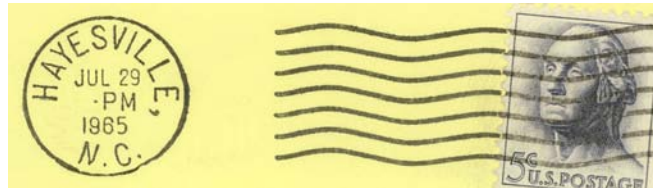
(Clay)



Type 8  
29 mm Black  
Metal Duplex Type H2  
16 Oct 1937  
8 Feb 1939



Type 9  
20.5 mm Black  
Universal Machine  
Type DT 200  
15 Apr 1943  
4 Jun 1963



Type 10  
21.5 mm Black  
International Machine  
Type J30  
20 Jan 1964  
29 Jul 1965



Type 11  
21.5 mm Black  
International Machine  
Type J30 (28904)  
1 Oct 1965  
1 May 1991



Type 12  
33 mm Black  
1963 Type F/2 4-Bar (28904)  
5 Apr 1976



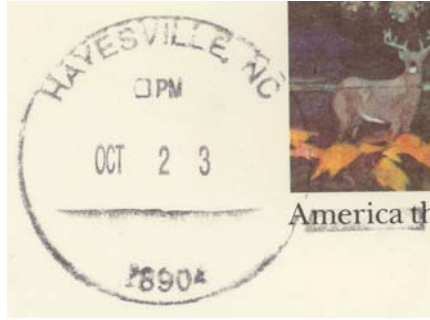
Type 13  
32.5 mm Black  
1963 Type F/2 4-Bar (28904)  
8 Apr 1981



CLAY COUNTY

Hayesville (Cont.)

(Clay)



Type 14  
38 mm Black  
Self-Inking Postmarker (28904)  
4 Nov 1991  
23 oct 199x



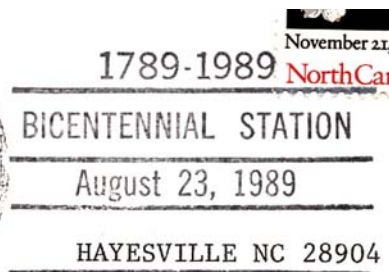
Type 15  
27.5 mm Red  
Self-Inking Postmarker (28904)  
24 Nov 2003



Type 16  
33.5 mm Red  
Self-Inking Postmarker (28904)  
17 Nov 2006

Temporary Station Cancels

Bicentennial Station



Type 1  
86 x 37 mm Black  
(Post office name typed in)  
(28904)  
23 Aug 1989

## CLAY COUNTY

### Hayesville (Cont.)

(Clay)

Receiving datestamp

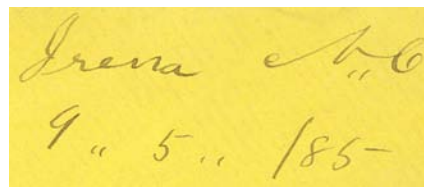


Type R1  
28 mm Black  
3 Oct 1899  
10 Apr 1907

### Irena

(Clay)

Alexander B. Ledford	14 May 1884
Wilson S. Ledford	26 Jan 1888
Discontinued	21 Sep 1894
Mail to Tusquitee	
Thomas C. Melton	28 Jun 1901
Jiles A. Mosteller	8 Mar 1902
Norman A. Mosteller	31 Aug 1903
Flora Davi	31 Dec 1904
Discontinued	15 Mar 1907
Mail to Hayesville	



Manuscript  
5 Sep 1885



Type 1  
29 mm Black  
25 Oct 1901  
5 Nov 1901

### Ledford

(Clay)

David A. Ledford	12 Sep 1889
William T. Robinson	13 Aug 1895
Robert L. Brown	26 Mar 1901
James V. Curtis	2 Oct 1902
Discontinued	30 Sep 1905
Mail to Hayesville	

### Lick Log Creek

(Clay)

Henry Ledford	15 Nov 1875
William M. Davis	31 Jan 1877
John H. Moore	20 Jun 1881
Discontinued	10 Feb 1882

## CLAY COUNTY

### Mayflower

(Clay)

Alexander B. Ledford 18 Mar 1902  
Discontinued 31 Oct 1905  
Mail to Hayesville

### Ogden

(Clay)

Robert L. Anderson 23 May 1903  
Discontinued 31 Aug 1929  
Mail to Brasstown



Type 1  
33 mm Magenta  
1910 Type B 4-Bar  
31 Aug 1929

### Pinelog

(Clay)

William T. Cabe 1 Apr 1903  
Missouria Ditmore 26 Apr 1904  
Hattie Bell 21 Mar 1905  
Discontinued 31 Jan 1906  
Mail to Brasstown

### Shearer

(Clay)

Laura B. Shearer 22 May 1901  
Discontinued 14 May 1904  
Papers to Tusquite

## CLAY COUNTY

### Shooting Creek

(Clay)

John M. Galloway	24 Jun 1875
James D. McClure	7 Feb 1889
Zoah McClur	31 Jan 1914
Hassey R. Rogers	4 Jan 1918
John M. Tiger, Acting	13 Jun 1925
Carrie Tiger, Acting	16 Oct 1930
Carrie Tiger	14 Nov 1930
Neal Rogers, Acting	22 Dec 1934
Neal Rogers	9 Apr 1935
Discontinued	28 Feb 1955
Mail to Hayesville	

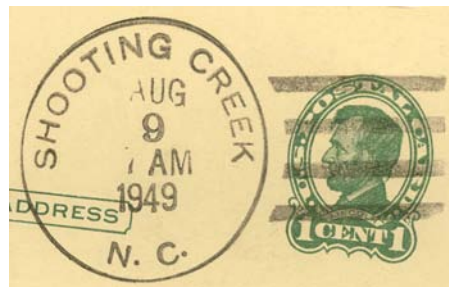


Type 1  
28 mm Black  
25 Aug 1893  
30 Mar 1895

Type 2  
28 mm Black  
Doane Type 2-1  
3 Apr 1908  
5 Jun 1908



Type 3  
33 mm Black  
1925 Type C/1 4-Bar  
9 Nov 1935



Type 4  
33 mm Black  
1936 Type F/1 4-Bar  
7 Nov 1944  
28 Feb 1955

### Shewbird

(Clay)

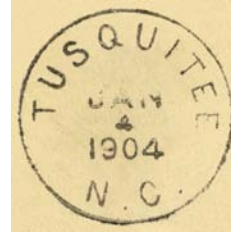
David E. Coleman	6 May 1901
Discontinued	14 Oct 1905
Mail to Hayesville	

## CLAY COUNTY

### Tusquitee, from Cherokee County

(Clay)

John H. Johnson, CSA	1 Aug 1861
CSA office closed on or before	30 Apr 1865
Federal office discontinued	11 Dec 1866
Thomas J. Johnson	16 Jan 1868
Discontinued	9 Nov 1870
Sallie Johnson	3 Jun 1872
Thomas J. Johnson	22 Feb 1877
Ora Moss	11 Sep 1897
Discontinued	28 Feb 1907
Mail to Hayesville	



Type 1  
28 mm Black  
4 Jan 1904

### Tusquitee Vale

(Clay)

James W. Shearer	30 Aug 1872
Discontinued	23 Jul 1874

### Twine

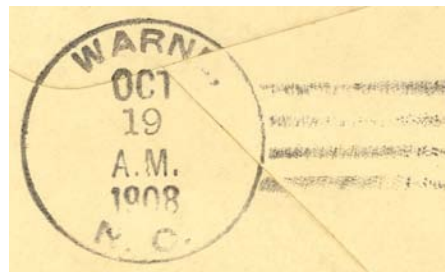
(Clay)

Lucius H. McClure	21 Oct 1889
Clara E. McClure	10 Feb 1899
Donnie McClure	27 Jan 1914
Donnie Herbert	6 Jan 1917
Discontinued	31 Oct 1918
Mail to Hayesville	

### Warne

(Clay)

George T. Hine	22 Jun 1887
Thomas P. Kimsey	12 Feb 1890
Carson A. Webb	4 Sep 1891
William Hooper	10 Aug 1896
John O. Nichols	12 Jun 1897
William C. Parsons	31 Jan 1907
John Hampton	8 Nov 1907
Florence Herbert	13 Mar 1908
Claude A. Moore, Acting	21 Dec 1943
Claude A. Moore	28 Apr 1945
Frederick L. Anderson Officer-In-Charge	29 Jun 1973
Frederick L. Anderson	5 Jan 1974
Charles T. Robertson Officer-In-Charge	8 Jul 1983
Robert L. Hughes	29 Oct 1983



Type 1  
32.5 mm Black  
1908 Type A/2 4-Bar  
19 Oct 1908  
22 Dec 1909

## CLAY COUNTY

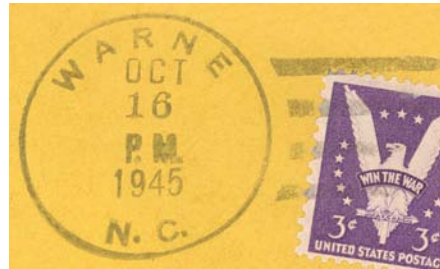
### Warne (Cont.)

(Clay)

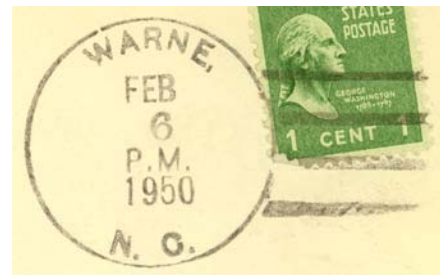
Shirley R. Hall Officer-In-Charge	5 May 1993
Richard Keith Barnard	22 Jan 1994
Shirley R. Hall Officer-In-Charge	2 Sep 1999
Karen E. Watson	7 Oct 2000
Cheryl Stewart Officer-In-Charge	16 Dec 2003
Connie S. C. Gabrielli	26 Jun 2004
Converted to Remotely Managed Post Office of Hayesville	17 Nov 2012



Type 2  
32.5 mm Black  
1910 Type B 4-Bar  
17 Jul 1914



Type 3  
33 mm Black  
1936 Type F/1 4-Bar  
16 Oct 1945



Type 4  
33 mm Black  
1936 Type F/1 4-Bar  
16 Jan 1950  
21 Jan 1953



Type 5  
33 mm Black  
1936 Type F/1 4-Bar  
3 Jul 1956



Type 6  
32.5 mm Black  
1936 Type F/1 4-Bar  
6 Jan 1960

CLAY COUNTY

Warne (Cont.)

(Clay)



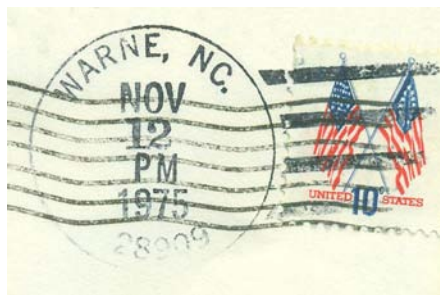
Type 7  
34 mm Black  
1936 Type F/1 4-Bar  
14 Jan 1965



Type 8  
33 mm Black  
1963 Type F/2 4-Bar (28909)  
30 Mar 1966  
18 Jun 1966



Type 9  
32 mm Black  
1963 Type F/2 4-Bar (28909)  
29 Aug 1969  
22 Feb 1972



Type 10  
32.5 mm Black  
1963 Type F/2 4-Bar (28909)  
12 Nov 1975



Type 11  
31.5 mm Black  
Self-Inking Postmarker  
Type 2A (28909)  
17 Dec 1985  
18 Jul 1989

CLAY COUNTY

Warne (Cont.)

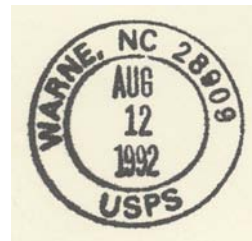
(Clay)



Type 12  
31.5 mm Black  
Self-Inking Postmarker (28909)  
13 Sep 1990



Type 13  
30.5 mm Black  
Self-Inking Postmarker  
Type 3B (28909)  
12 Mar 1992  
5 May 1995



Type 14  
28 mm Black  
Self-Inking Postmarker (28909)  
12 Aug 1992



Type 15  
34 mm Black  
Self-Inking Postmarker  
(28909-9998)  
24 Nov 2003



Type 16  
30.5 mm Red  
Self-Inking Postmarker (28909)  
24 Nov 2003



CLAY COUNTY

Warne (Cont.)

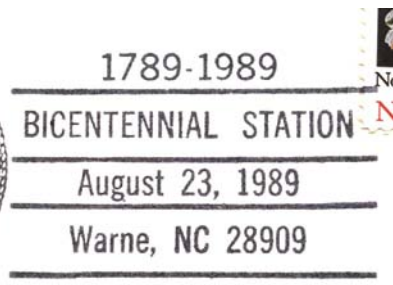
(Clay)



Type 17  
44 mm Red  
Self-Inking Postmarker  
(28909-8889)  
27 Mar 2007

Temporary Station Cancels

Bicentennial Station



Type 1  
86 x 37 mm Black  
(28909)  
23 Aug 1989