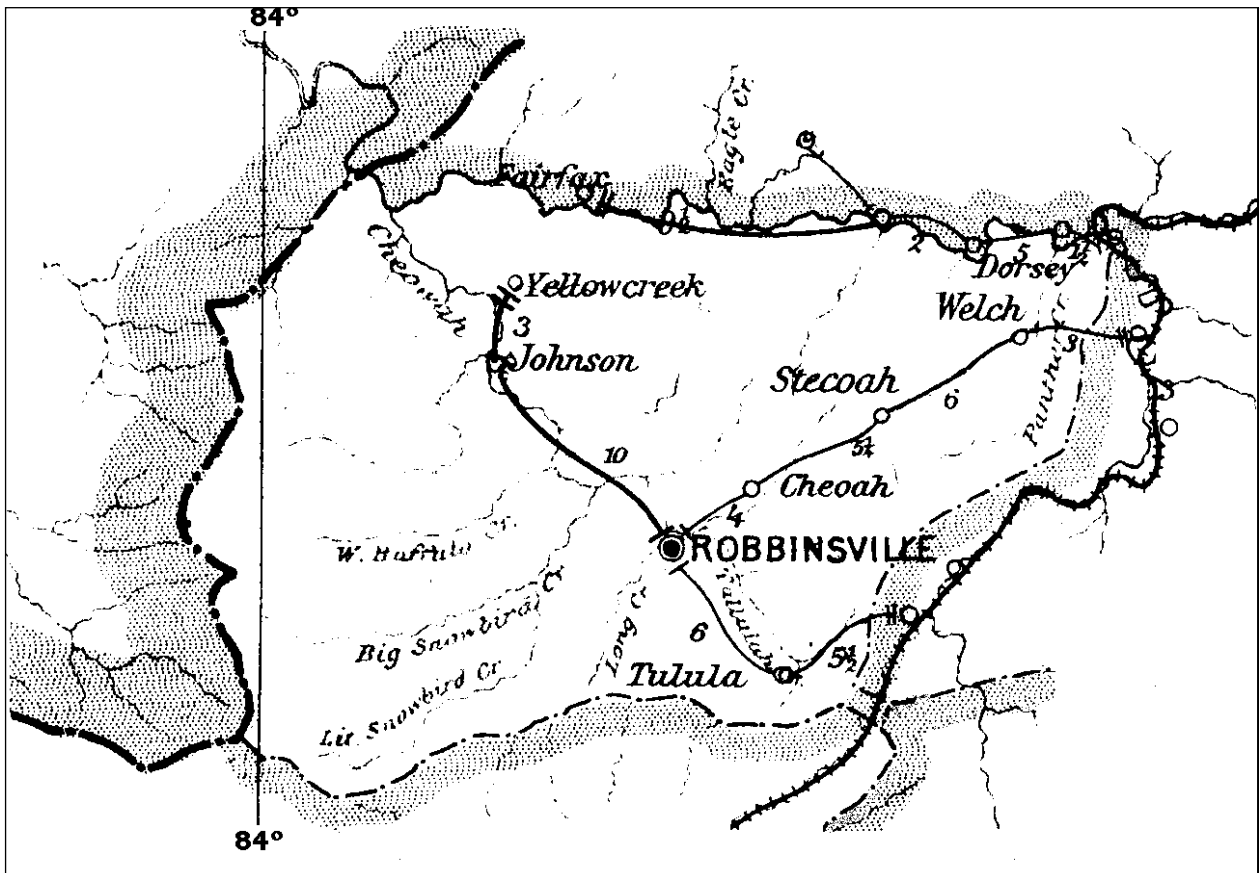


GRAHAM COUNTY

Formed on 30 January 1872 from Cherokee County

Number of Post Offices - 22
Number with postmarks known - 17



GRAHAM COUNTY

Brock

(Graham)

George F. Brock	25 Jul 1903
William P. Robertson	23 Nov 1905
Luther C. Sawyer	19 Apr 1906
Alice D. Brock	26 May 1909
Daniel A. Taylor	17 Jun 1914
Arthur J. Fisher, Acting	12 Apr 1922
Arthur J. Fisher	21 Aug 1922
Alice D. Brock, Acting	10 Jan 1923
Alice D. Brock	3 Mar 1923
Discontinued	14 Nov 1931
Mail to Stecoah	

Cheoah

(Graham)

Jefferson D. Harwood	11 Aug 1892
John H. Hyde	26 May 1896
William R. Morgan	8 Feb 1898
David J. Rogers	12 Jul 1898
Molton L. Rice	26 Mar 1901
J. A. Carpenter	12 Oct 1901
Arthur C. Ray	5 Nov 1901
Pearl L. Rice	14 Aug 1903
Molton L. Rice	11 Apr 1907
Thomas L. Rogers	3 Oct 1910
Arthur P. Dayton, Acting	14 Dec 1923
Arthur P. Dayton	15 Jan 1924
Sallie Shope, Acting	4 Dec 1938
Sallie Shope	2 May 1939
Abraham V. Elliott, Acting	9 Oct 1941
Abraham V. Elliott	30 Jan 1942
Discontinued	31 May 1955
Mail to Robbinsville	



Type 1
27 mm Black
Feb 1897
25 Mar 1900



Type 2
30.5 mm Black
12 Aug 1904



Type 3
28.5 mm Black
Doane Type 2-1
18 Nov 1904
13 Sep 1909



Type 4
31.5 mm Black
1908 Type A/2 4-Bar
6 Jun 1910
6 May 1912

GRAHAM COUNTY

Cheoah (Cont.)

(Graham)



Type 5
28.5 mm Magenta
10 Mar 1951
31 May 1955



Type 6
34.5 mm Black
1936 Type F/1 4-Bar
10 Mar 1951
31 May 1955

Fairfax, moved from Swain County

(Graham)

James M. Rhymer	26 May 1893
Moved to Swain County	3 Nov 1896

Fontana Dam

(Graham)

Fay Bales	16 Jul 1942
Herbert C. Enloe, Acting	11 Aug 1942
Martha T. Calahan, Acting	17 Sep 1942
Martha T. Calahan	27 Oct 1942
Amanda B. Crisp	2 Jun 1943
James R. Miller	1 Mar 1945
Mrs. Belle Q. Cable, Acting	31 Mar 1947
Mrs. Belle Q. Cable	2 Mar 1949
Burl L. Orr, Acting	30 Apr 1954
Mrs. Belle Cable, Acting	24 Feb 1961
Mrs. Belle Cable	21 Sep 1961
Mrs. Faye B. Stewart, Acting	17 Feb 1969
Mrs. Faye B. Stewart	4 Sep 1971
Mrs. Sheila G. Beasley Officer-In-Charge	9 Jun 1973
Mrs. Sheila G. Beasley	2 Feb 1974
Virginia H. Zakroski Officer-In-Charge	9 Sep 1999
Virginia H. Zakroski	18 Dec 1999



Type 1
34 mm Black
1936 Type F/1 4-Bar
3 Aug 1942
15 Mar 1943

GRAHAM COUNTY

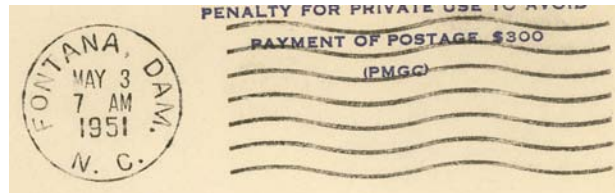
Fontana Dam (Cont.)

(Graham)

Brenda A. Williams Officer-In-Charge 2 Mar 2007
 Brenda A. Williams 9 Jun 2007
 Angela Price Officer-In-Charge 9 Jun 2009
 Converted to Remotely Managed Post
 Office of Robbinsville. 17 Nov 2012



Type 2
 30.5 mm Magenta
 3 Aug 1942



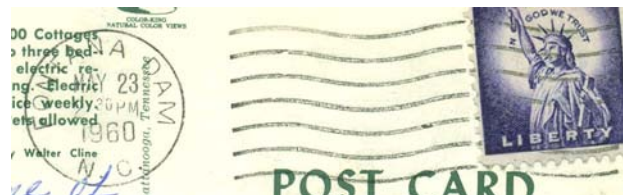
Type 3
 21 mm Black
 Universal Machine
 Type DT 200K (wide space
 between "A" and "D")
 19 Oct 1944
 23 May 1960



Type 4
 30 mm Magenta
 1 May 1951



Type 5
 30 mm Magenta
 25 Mar 1957

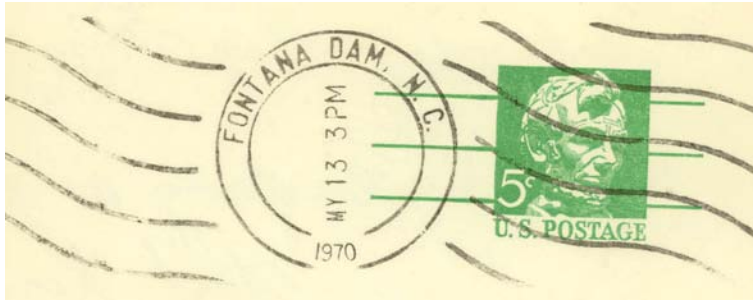


Type 6
 21 mm Black
 Universal Machine
 Type DT 200K
 23 May 1960

GRAHAM COUNTY

Fontana Dam (Cont.)

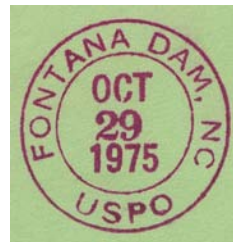
(Graham)



Type 7
31.5 mm Black
Hanley hand-held roller
13 May 1970
29 Oct 1975



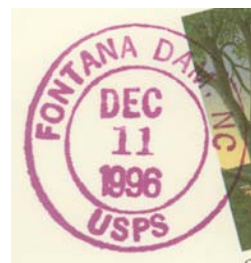
Type 8
20.5 mm Black
Universal Machine
Type DTSz 200K (28733)
13 May 1967
29 Oct 1995



Type 9
28 mm Magenta
29 Oct 1975
4 Nov 1975



Type 10
29.5 mm Magenta
15 Oct 1990
30 Sep 1992



Type 11
29.5 mm Magenta
11 Dec 1996
24 Nov 2003

GRAHAM COUNTY

Fontana Dam (Cont.)

(Graham)



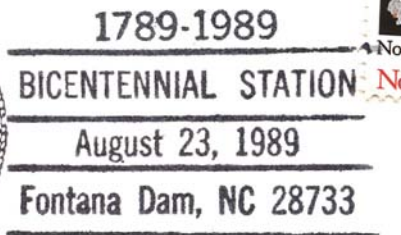
Type 12
37.5 mm Black
Self-Inking Postmarker (28733)
3 Nov 2006



Type 13
31 mm Red
Self-Inking Postmarker (28733)
3 Nov 2006

Temporary Station Cancels

Bicentennial Station



Type 1
87.5 x 37.5 mm Black
(28733)
23 Aug 1989

Third Class Cancelers



Type 1
35 x 17.5 mm magenta
1 May 1951

GRAHAM COUNTY

Fort Montgomery, from Cherokee County

(Graham)

Perley J. Aitken 2 Dec 1872
Name changed to **Robbinsville** 9 Jun 1874

Gladen

(Graham)

John J. Gribble 3 Jun 1903
Order rescinded 23 Jun 1903

Homestead, name changed from Welch

(Graham)

William H. Crisp 1 Sep 1892
Discontinued 21 Mar 1898
Papers to Judson



Type 1
28.5 mm Black
8 May 1895
21 Mar 1898

Japan, name changed from Welch

(Graham)

Joshua C. Edwards 2 Sep 1903
Joshua C. Crisp 21 Sep 1910
Callie L. West 5 Feb 1912
John B. Andrews 15 May 1916
Laura J. Medlin, Acting 23 Feb 1941
Laura J. Medlin 3 May 1941
Laura M. Taylor (marriage) 9 Aug 1941
Hazel B. Taylor, Acting 19 Oct 1941
Hazel B. Taylor 29 Nov 1941
Discontinued 15 Jan 1944
Mail to Stecoah

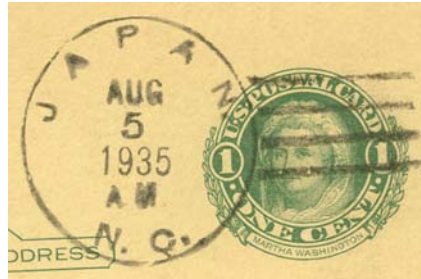


Type 1
28 mm Black
Doane Type 1-?
6 Jun 1908

GRAHAM COUNTY

Japan (Cont.)

(Graham)



Type 2
32 mm Black
1936 Type F/1 4-Bar
18 Mar 1935
25 Jan 1937



Type 3
33 mm Black
1936 Type F/1 4-Bar
16 Aug 1941
15 Jun 1943

Johnson

(Graham)

Willis L. Jenkins	24 Oct 1890
Robert V. McElroy	29 Mar 1907
Riley Orr	5 Feb 1908
Discontinued	31 Oct 1914
Mail to Millsaps	



Type 1
27 mm Black
7 Apr 1898
17 May 1898



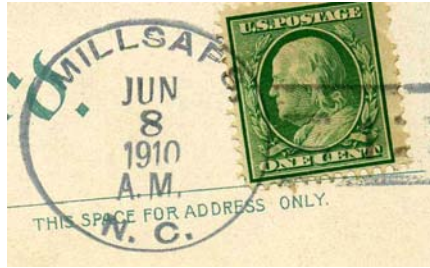
Type 2
31.5 mm Black
1906 Type A/1 4-Bar
7 Feb 1907

GRAHAM COUNTY

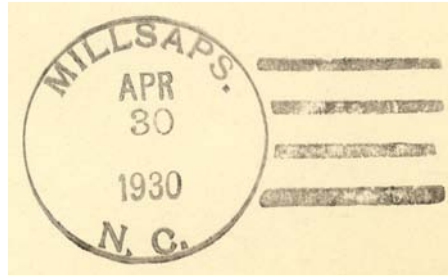
Millsaps

(Graham)

Noah E. Millsaps	9 May 1906
Discontinued	ca. 1914
Noah E. Millsaps	18 Sep 1917
Minnie Millsaps	11 Feb 1920
Mollie Shope, Acting	2 Apr 1925
Mollie Shope	14 Sep 1925
Name changed to Santeetlah	1 May 1930



Type 1
31.5 mm Black
Doane Type 3-1
25 Jun 1907
8 Jun 1910



Type 2
32.5 mm Black
1925 Type C/1 4-Bar
30 Apr 1930

Robbinsville, name changed from Fort Montgomery

(Graham)

Perly A. Aiken	9 Jun 1874
John W. King	6 Jul 1874
George B. Walker	23 Jul 1875
John Barker	2 Feb 1883
William P. Rose	3 Apr 1884
George B. Walker	18 Jan 1886
Theodore Metz	15 Jul 1889
John W. Robinson	1 Jun 1893
Jefferson D. Harwood	11 Jun 1897
Newton C. Christopher	18 Oct 1899
William H. Eller	7 Dec 1909
Helen D. Slaughter	19 Jun 1914
John H. Philips	5 Mar 1920
A. S. Eller, Acting	1 Jun 1922
Theodore M. Jenkins	3 Nov 1924
Frank Colvard, Acting	1 Nov 1926
Frank Colvard	16 Feb 1927
Earl P. Tatham, Acting	7 Jul 1934
Earl P. Tatham	24 Jul 1935
Oliver L. Ammons, Acting	24 May 1936
Oliver L. Ammons	8 Feb 1937
Mrs. Woodie G. Ammons, Acting	31 Oct 1944
Mrs. Woodie G. Ammons	6 Dec 1945
Mrs. Woodie G. Carver (marriage)	5 Nov 1950
Delmas Shuler, Acting	1 Feb 1956
Caroll O. Jenkins, Acting	28 Jun 1957
Mrs. Hazel W. Keith, Acting	4 Apr 1961
Edward M. Ingram, Acting	22 Jun 1962
Edward M. Ingram	4 Sep 1962
Delila C. Cable Officer-In-Charge	26 Jun 1992

Robbinsville
6/18, 1877

Manuscript
18 Jun 1877



Type 1
26 mm Black
24 Oct 188x



Type 2
27.5 mm Black
1 May 1894

GRAHAM COUNTY

Robbinsville (Cont.)

(Graham)

Marvin D. Jenkins Officer-In-Charge	9 Dec 1992
David R. Spitzer	29 May 1993
Marvin D. Jenkins Officer-In-Charge	25 Jun 1999
Bryan I. Roberts	11 Sep 1999
Karen E. Watson Officer-In-Charge	1 Jul 2002
Jeane U. Camp	11 Jan 2003
Donald S. Reynolds Officer-In-Charge	14 Jan 2005
Donald S. Reynolds	5 Feb 2005
Deborah O. Beasley Officer-In-Charge	29 Nov 2006
David R. Spitzer Officer-In-Charge	9 Aug 2007
David R. Spitzer	5 Jan 2008
Deborah O. Beasley Officer-In-Charge	21 Feb 2008
Debbie R. Beasley	16 Aug 2008



Type 3
27.5 mm Black
11 Nov 1898
25 May 1909



Type 4
32.5 mm Black
1925 Type C/1 4-Bar
25 Feb 1929



Type 5
33 mm Black
1931 Type C/2 4-Bar
18 Jul 1935
25 Jul 1936

Type 6
23 mm Black
Columbia Machine
Type G 2W
25 Dec 1936

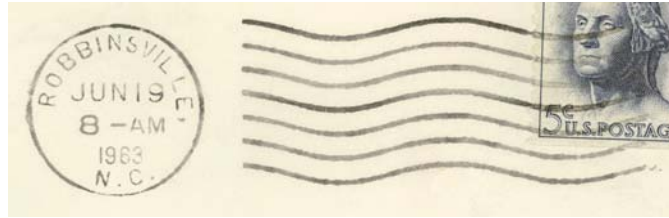


Type 7
31 mm Black
Metal Duplex Type E2
20 Sep 1946
5 Dec 1955

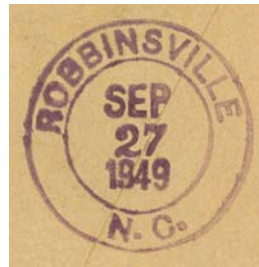
GRAHAM COUNTY

Robbinsville (Cont.)

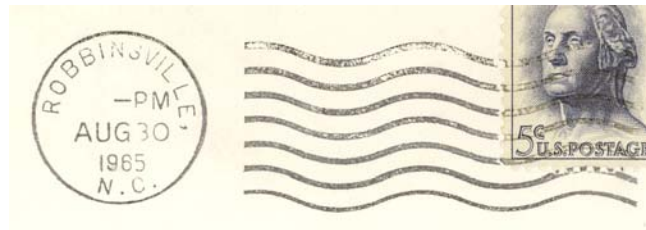
(Graham)



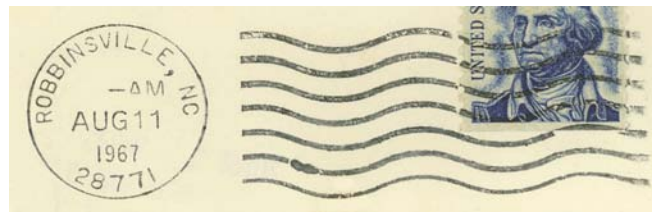
Type 8
23 mm Black
International Machine
Type AT/S 2711
4 Nov 1940
10 Mar 1965



Type 9
30.5 mm Magenta
27 Sep 1949



Type 10
23 mm Black
International Machine
Type AT/S 2724
25 Jun 1965
30 Aug 1965



Type 11
23.5 mm Black
International Machine
Type ATS/z 2724 (28771)
15 Sep 1966
16 Jun 1970



Type 12
20.5 mm Black
International Machine
Type Hz 30 (28771)
16 May 1978
19 Nov 1985

GRAHAM COUNTY

Robbinsville (Cont.)

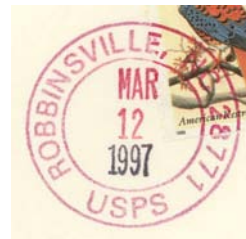
(Graham)



Type 13
32 mm Black
1963 Type F/2 4-Bar (28771)
6 Feb 1981



Type 14
31.5 mm Black
Self-Inking Postmarker
Type 3A (28771)
20 Dec 1985



Type 15
27.5 mm Red
Self-Inking Postmarker (28771)
12 Mar 1997



Type 16
29 mm Red
Self-Inking Postmarker (28771)
15 Jul 1999



Type 17
33 mm Black
Self-Inking Postmarker (28771)
22 Feb 2007

GRAHAM COUNTY

Robbinsville (Cont.)

(Graham)

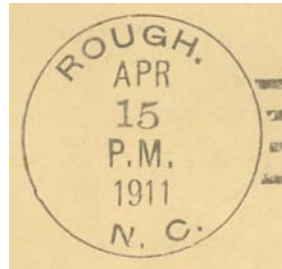


Type 18
28 mm Red
Self-Inking Postmarker (28771)
22 Feb 2007

Rough

(Graham)

James A. Stewart	3 Nov 1908
William N. Crisp	9 Mar 1915
Discontinued	31 Oct 1915
Mail to Robbinsville	



Type 1
32 mm Black
1908 Type A/2 4-Bar
15 Apr 1911

Santutlah, Santeetlah

(Graham)

Wade W. Hampton	2 Oct 1901
Name changed to Santeetlah	25 Nov 1901
Wade W. Hampton	25 Nov 1901
John A. Weaver	2 Jan 1903
Cleveland Wall	17 Feb 1904
Bessie M. Rose	7 Jun 1906
Tennessee Parker	25 Oct 1912
Discontinued	31 Oct 1913
Name changed from Millsaps	1 May 1930
Mollie Shope	1 May 1930
Discontinued	31 Oct 1949
Mail to Robbinsville	

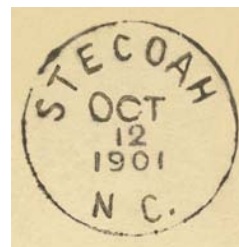


Type 1
32.5 mm Black
1925 Type C/1 4-Bar
1 May 1930
16 Jan 1931

Stecoah

(Graham)

James M. Carven	2 Jul 1874
William D. Crisp	27 Jul 1874
D. A. Taylor	3 Nov 1885
Martha A. Taylor	12 Feb 1886
Manoes A. Crisp	17 May 1889
Martha A. Taylor	1 Aug 1893
Nelson S. Crisp	13 Sep 1897
Clara E. Crisp	2 Jul 1902
Philip S. Crisp	6 Jul 1905
Joel L. Crisp	27 Dec 1905
James S. Ammons	26 Oct 1912
Joseph M. Edwards	7 Aug 1914
Joseph G. Lakey	7 May 1932
Dillard P. Hyde, Acting	19 Feb 1940



Type 1
28.5 mm Black
29 Jun 1890
12 Oct 1901

GRAHAM COUNTY

Stecoah (Cont.)

(Graham)

Dillard P. Hyde	21 Jun 1940
Glenn R. Jenkins, Acting	14 Apr 1941
Glenn R. Jenkins	17 Jun 1941
Arvil H. Cable, Acting	12 May 1944
Arvil H. Cable	31 Oct 1944
Lura Edwards	27 Apr 1945
Hobert Holder, Acting	5 Feb 1957
Discontinued	31 Jul 1958



Type 2
28 mm Black
Doane Type 2-1
4 Nov 1909
4 Nov 1911



Type 3
36 mm Black
Non-standard 4-Bar
27 Mar 1941



Type 4
33.5 mm Black
1936 Type F/1 4-Bar
19 Aug 1946
20 Sep 1951



Type 5
36.5 mm Black
Non-standard 4-Bar
13 Jan 1956
31 Aug 1956

GRAHAM COUNTY

Sweetgum

(Graham)

William D. Bradley 23 Dec 1902
 Discontinued 28 Feb 1905
 Mail to Robbinsville



Type 1
 28.5 mm Black
 17 Jun 1903

Tapoco

(Graham)

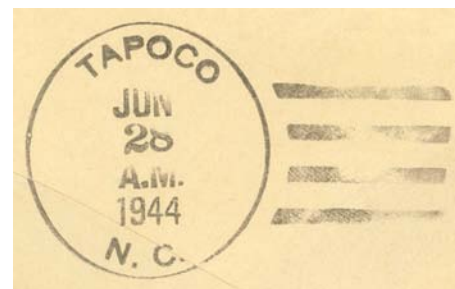
Thomas C. Shope 14 Oct 1916
 Pleas M. Sawyer 7 Jun 1917
 Morion T. Crisp 20 Jun 1918
 Ray Raulston 26 Mar 1919
 Fred F. Beasley, Acting 3 Mar 1928
 Fred F. Beasley 3 May 1928
 Charlie Orr, Acting 1 Jan 1931
 Charles W. King, Acting 1 Sep 1931
 Charles W. King 28 Oct 1931
 Fred S. Beasley, Acting 30 Sep 1933
 Fred S. Beasley 3 Nov 1933
 Charles W. King, Acting 31 Dec 1934
 Charles W. King 18 May 1935
 Erskin J. Jenkins, Acting 2 May 1936
 Erskin J. Jenkins 4 Jun 1936
 Mack W. Grant Officer-In-Charge 28 Feb 1969
 Mack W. Grant Sr. 17 Jul 1971
 Mitchell R. Hayes Officer-In-Charge 17 Feb 1976
 Richard Wilson Officer-In-Charge 31 May 1977
 Mrs. Virginia A. Zakroski 16 Jul 1977
 Service suspended 5 Oct 1992
 Discontinued 26 Oct 1995
 Mail to Robbinsville



Type 1
 30 mm Black
 1910 Type B 4-Bar
 26 Feb 1919



Type 2
 34 mm Black
 1931 Type C/2 4-Bar
 16 Jul 1834
 15 May 1937



Type 3
 33 mm Black
 1936 Type F/1 4-Bar
 26 May 1938
 28 Jun 1944



Type 4
 34 mm Black
 1936 Type F/1 4-Bar
 17 May 1950
 24 May 1951

GRAHAM COUNTY

Tapoco (Cont.)

(Graham)



Type 5
32.5 mm Black
1936 Type F/1 4-Bar
26 Jul 1960
14 Sep 1963



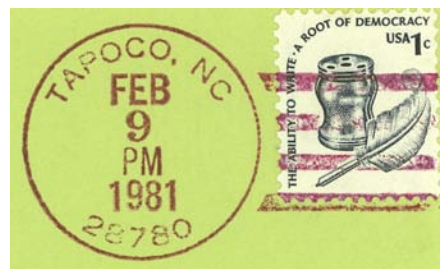
Type 6
33.5 mm Black
1963 Type F/2 4-Bar (28780)
13 Apr 1966
13 Oct 1967



Type 7
32.5 mm Black
1963 Type F/2 4-Bar (28780)
26 Feb 1970



Type 8
28 mm Magenta
18 Feb 1972



Type 9
31.5 mm Black
18 Feb 1972
15 Oct 1990
31.5 mm Magenta
1963 Type F/2 4-Bar (28780)
9 Feb 1981

GRAHAM COUNTY

Tapoco (Cont.)

(Graham)

M.O.B.
(Money Order Business)

Type 1
30.5 mm Magenta
17 Mar 1947



Tulula

(Graham)

George W. Colvard	21 Nov 1894
John Ammons	11 Jun 1901
Annie Colvard	1 Feb 1904
Discontinued	31 Jan 1914
Mail to Topton, Cherokee County	



Type 1
31.5 mm Black
1906 Type A/1 4-Bar
4 Mar 1910

Tuskeega

(Graham)

Isaac C. Brooks	19 Jul 1890
Discontinued	12 Jun 1894
Papers to Stecoah	

Tuskegee

(Graham)

Andrew J. Breedlove	15 Jun 1903
Elisha H. Garland	21 Mar 1904
George H. Garland	23 Sep 1904
Elisha H. Garland	13 Feb 1905
John W. Edwards	3 Jul 1905
Elvira Owenby	2 Oct 1905
Louisa Owenby	7 Sep 1907
Zenia M. Conley	30 Dec 1912
Eliza C. Cable	16 Apr 1919
Samuel A. Cable	27 Jan 1937
Discontinued	30 Apr 1954
Mail to Stecoah	

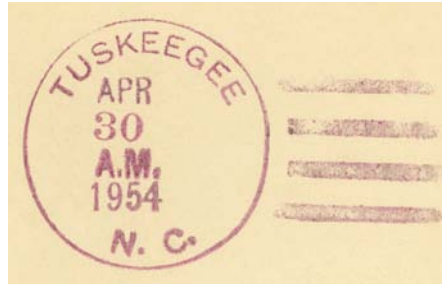


Type 1
29 mm Black
15 Oct 1904

GRAHAM COUNTY

Tuskegee (Cont.)

(Graham)



Type 2
33 mm Black
1936 Type F/1 4-Bar
5 May 1951
24 Apr 1954

33 mm Magenta
30 Apr 1954



Type 3
30 mm Magenta
30 Apr 1954

Welch

(Graham)

Thomas J. Welch	26 Jan 1881
Discontinued	16 May 1887
Thomas J. Welch	7 Jun 1887
William H. Crisp	21 Oct 1890
Name changed to Homestead	1 Sep 1892
Andrew M. Edwards	11 Aug 1898
Joshua C. Edwards	8 Aug 1901
Name changed to Japan	2 Sep 1903



Type 1
27.5 mm Black
29 Oct 1883
17 May 1892

Welch Cove

(Graham)

Ruby S. Hood	23 Feb 1943
Belle Cable	1 Apr 1946
Discontinued	31 Mar 1947
Mail to Fontana Dam	



Type 1
35 mm Magenta
Non-standard 4-Bar
31 Mar 1947

GRAHAM COUNTY

Yellow Creek, Yellowcreek

(Graham)

Devania Parker	15 Oct 1878
Virgil Grant	6 Mar 1882
V. M. Grant	4 May 1882
Varnell Grant	31 May 1882
Kimsey N. Grant	6 Oct 1890
Name changed to Yellowcreek	18 May 1894
Oliver P. Williams	18 May 1894
Artie Williams	1 Nov 1898
William B. Shope	27 Dec 1900
Joseph E. Brooks	2 Jan 1907
Daniel Anderson	17 Feb 1916
Jeffie G. Kennedy	7 Mar 1918
Jeffie J. Millsaps	7 Mar 1918
Discontinued	30 Jun 1953
Mail to Robbinsville	



Type 1
 28.5 mm Black
 Doane Type 2-1
 24 Jan 1910
 8 Feb 1910



Type 2
 32.5 mm Black
 1936 Typr F/1 4-Bar
 21 Apr 1949
 30 Jun 1953