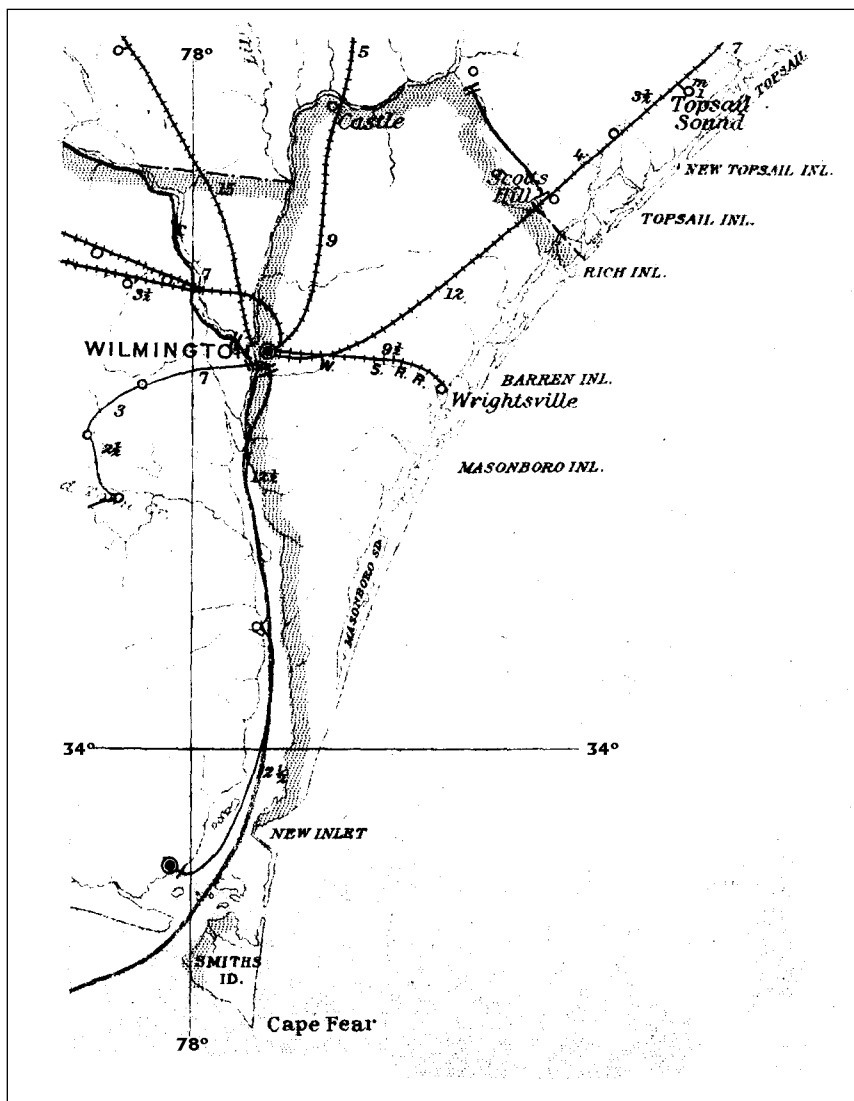


# NEW HANOVER COUNTY

Formed in 1729 from Craven County

Number of Post Offices - 46  
Number with postmarks known - 19



## NEW HANOVER COUNTY

### Angola, moved from Onslow County

(New Hanover)

Isaac Rochelle	14 Feb 1856
CSA activity reported, postmaster unknown	
CSA office closed on or before	30 Apr 1865
Federal office discontinued	7 Jan 1867
James Lamb	31 Jul 1871
John H. Mashburn	6 Jun 1873
To Pender County	16 Feb 1875

### Ashton

(New Hanover)

Robert T. Henderson	18 Jun 1874
To Pender County	16 Feb 1875

### Bannerman

(New Hanover)

John P. Bannerman	12 Apr 1847
No record of CSA operation	
Discontinued	6 Dec 1866

### Beatty's Bridge

(New Hanover)

John Beatty	23 Nov 1826
Henry B. Beatty	10 Feb 1827
Name changed to <b>Pleasant District</b>	15 Jan 1833

## NEW HANOVER COUNTY

### Bishop

(New Hanover)

Henry M. Bishop            1 Aug 1890  
 Discontinued            30 Oct 1891  
 Papers to Wilmington

### Black River Chapel

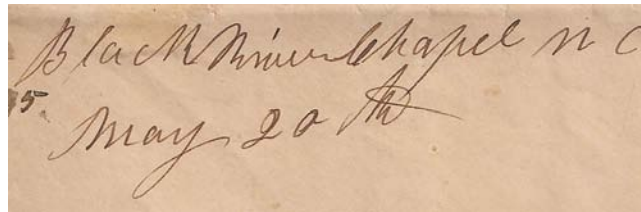
(New Hanover)

James M. Corbett            30 May 1840  
 "appt. by mistake"  
 John M. Corbett            8 Jul 1840  
 Andrew J. Henry            6 Jan 1858  
 A. J. Henry, Acting CSA    by 1863  
 CSA office closed on or before 30 Apr 1865  
 William Henry            17 Apr 1866  
 Thomas J. Blackburn      28 Aug 1872  
 To Sampson County      8 Nov 1872

*Black River  
 chapel NC July 11*

Manuscript  
 11 Jul 1851

Confederate



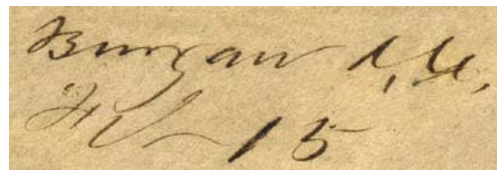
Manuscript  
 20 May 1862

### Burgaw Depot, moved from Cypress Grove (1)

(New Hanover)

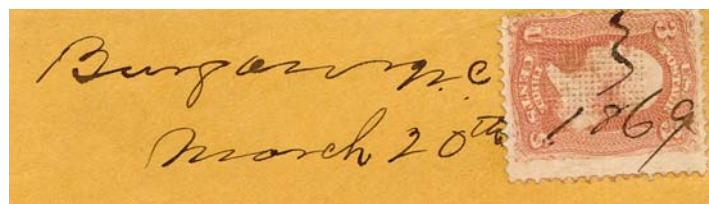
Wiley W. Flowers            24 Jan 1854  
 J. D. Montegue            31 Jan 1855  
 John N. Bowden            11 Jun 1855  
 Sterling Allen            3 Aug 1855  
 Archibald M. Cowan       4 Apr 1857  
 Discontinued            27 Jan 1859  
 Benjamin P. Currie       19 Mar 1859  
 John S. Player            28 Sep 1859  
 Discontinued            19 Dec 1859  
 M. Cowan, CSA            6 Sep 1861  
 CSA office closed on or before 30 Apr 1865  
 Jesse P. Jordan            6 May 1867  
 George Highsmith       17 Dec 1867  
 William McCallum       10 Apr 1868  
 Rufus W. Collins       21 Dec 1868  
 Discontinued            3 Nov 1870  
 Evander M. Moore       3 Feb 1871  
 To Pender County       16 Feb 1875

Confederate



Manuscript  
 8 Feb 186x  
 15 Feb 1863

Reconstruction



Manuscript  
 20 Mar 1869

## NEW HANOVER COUNTY

### Caintuck

(New Hanover)

Thomas J. Corbett	22 Feb 1849
Discontinued	17 Nov 1851
Thomas J. Corbett	31 Dec 1851
Sylvanus F. Wilson	21 Aug 1854
Thomas J. Corbett	19 Jun 1858
T. J. Corbett, CSA	Bibliog. #19
CSA office closed on or before	30 Apr 1865
Charles B. Barnhill	13 Aug 1866
Discontinued	31 Aug 1868

### Camera, name changed from Sills Creek

(New Hanover)

Mary M. Johnson	20 Oct 1865
James Johnson	5 Mar 1868
John Smith	14 Apr 1873
To Pender County	16 Feb 1875

### Carolina Beach

(New Hanover)

Alexander W. Pate	18 Jul 1917
Appointment rescinded	8 Oct 1917
Cornelius M. Murrin	22 Nov 1935
John C. Koleman, Acting	2 Sep 1938
John C. Koleman	31 Jul 1939
Walter H. Blair, Acting	1 Aug 1940
Walter H. Blair	13 Feb 1941
Mrs. Annie B. Morton, Acting	23 Nov 1941
Mrs. Annie B. Morton	6 May 1942
Mrs. Pauline P. Creech	6 Mar 1971
Barbara Y. Spital Officer-In-Charge	31 Jan 1977
Mrs. Marie S. Royal	27 Jul 1977
Faye H. Teague Officer-In-Charge	18 Jun 1979
Jerry M. Dennis	9 Feb 1980
Robert L. Burkhart Officer-In-Charge	21 May 1987
Donna M. Watson	29 Aug 1987
Pamela K. Valle Officer-In-Charge	27 Jul 2012
John F. Jameson III	6 Oct 2012
Terry D. Rockwell	29 Nov 2014
Ronda Evans Officer-In-Charge	9 Oct 2018
Anthony Buoniconti Officer-In-Charge	18 Jan 2019
Anthony Buoniconti	2 Feb 2019



Type 1  
33.5 mm Black  
Type B 4-Bar  
1 Sep 1937

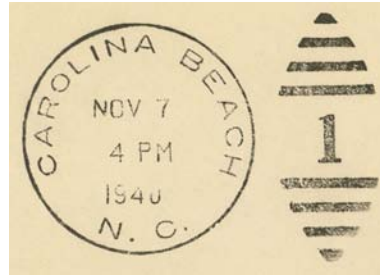


Type 2  
23 mm Black  
International Machine  
Type AT/S 2721  
19 Jun 1940  
18 Jul 1944

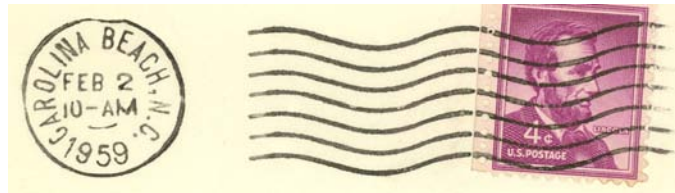
# NEW HANOVER COUNTY

Carolina Beach (Cont.)

(New Hanover)



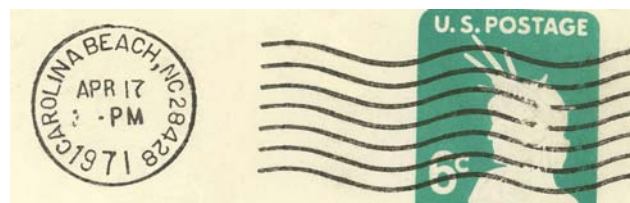
Type 3  
30.5 mm Black  
Metal Duplex Type ?  
7 May 1940  
8 May 1961



Type 4  
21 mm Black  
International Machine  
Type D30  
29 Oct 1945  
6 Aug 1965



Type 5  
31 mm Magenta  
14 Jun 1955



Type 6  
21.5 mm Black  
International Machine  
Type Nz 30 (28428)  
20 Feb 1967  
3 Apr 1979

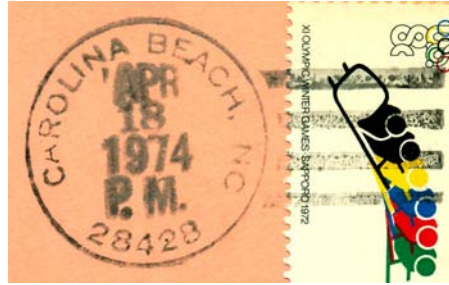


Type 7  
32 mm Black  
Hanley hand-held roller (28428)  
16 Jan 1971

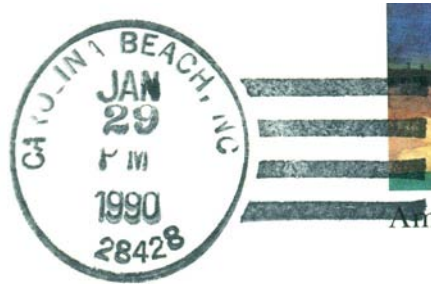
NEW HANOVER COUNTY

Carolina Beach (Cont.)

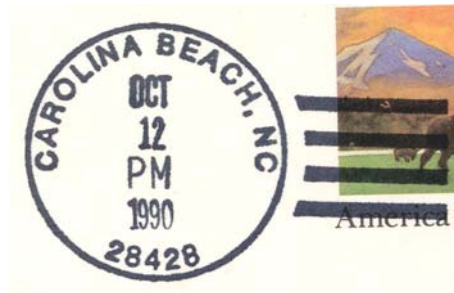
(New Hanover)



Type 8  
32.5 mm Black  
1963 Type F/2 4-Bar (28428)  
18 Apr 1974  
10 Sep 1974



Type 9  
33 mm Black  
1963 Type F/2 4-Bar (28428)  
29 Jan 1990



Type 10  
32.5 mm Black  
Self-Inking Postmarker  
Type 2A (28428)  
12 Oct 1990  
15 May 1996



Type 11  
21.5 mm Black  
International Machine  
Type Hz 30 (28428)  
19 Nov 1990

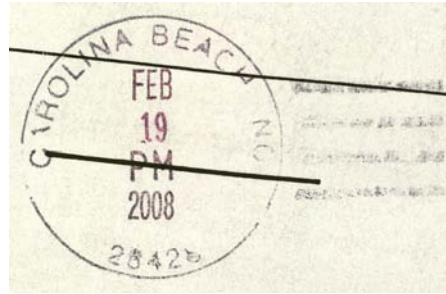


Type 12  
30 mm Red  
Self-Inking Postmarker (28428)  
13 Sep 2006

# NEW HANOVER COUNTY

## Carolina Beach (Cont.)

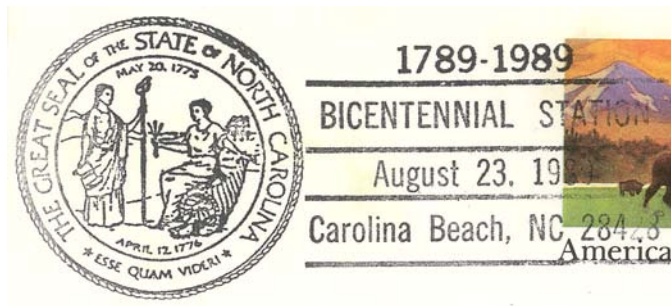
(New Hanover)



Type 13  
34.5 mm Black  
Self-Inking Postmarker (28428)  
19 Feb 2008

## Temporary Station Cancels

Bicentennial Station

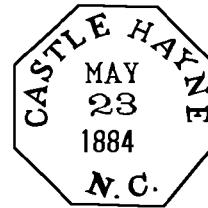


Type 1  
86 x 37 mm Black  
(28428)  
23 Aug 1989

## Castle Hayne, Castle

(New Hanover)

James Owen	10 May 1869
John T. Vann	8 Apr 1870
Discontinued	27 Apr 1871
Joseph W. Barnes	11 Apr 1872
Discontinued	25 Mar 1873
J. W. Barnes	3 Jun 1873
Edward Schriver	11 Feb 1874
Discontinued	10 Aug 1874
Edward Schriver	28 Sep 1874
Discontinued	6 Apr 1876
Edward C. Schriver	5 May 1876
Discontinued	17 Mar 1879
John J. Bordeaux	20 Jun 1881
James Cowan	8 Jan 1885
James H. Dorsett	23 Jul 1890
Name changed to <b>Castle</b>	19 Aug 1895
Samuel Blossom	19 Aug 1895
John H. Willis	26 May 1902
Discontinued	5 Sep 1902
William H. Shearin	17 Oct 1902
Name changed to <b>Castle Hayne</b>	24 Feb 1908
John W. Winders	24 Feb 1908
Edward R. Jones	11 Jul 1912
W. H. Shearin	4 Dec 1920
Duncan McEachern, Acting	10 Feb 1925
Annie M. Shearin	8 Sep 1925



Type 1  
27 mm Black Octagonal  
23 May 1884



Type 2  
28 mm Black  
7 Feb 1905

# NEW HANOVER COUNTY

## Castle Hayne, Castle (Cont.)

(New Hanover)

John L. Browning, Acting	3 Feb 1928
Ruby R. Eason, Acting	12 Apr 1929
Ruby R. Eason	16 Dec 1929
Ruby R. Moore (marriage)	21 Jun 1930
Mrs. Edelweiss Warren, Acting	29 Sep 1933
Mrs. Edelweiss Warren	27 Nov 1933
Mrs. Edelweiss Mishoe (marriage)	4 May 1935
Catherine V. Greer, Acting	27 Dec 1965
William R. Todd, Jr.	4 Apr 1968
Donald E Rouse Officer-In-Charge	5 Sep 1980
Jean D. Short	27 Dec 1980
Julian B. Hamer Jr. Officer-In-Charge	29 Mar 1990
John Robert White Jr.	11 Aug 1990
Edward W. Flagler	20 Feb 1993
Phoebe R. Jordan Officer-In-Charge	16 Aug 2002
Phoebe R. Jordan	30 Nov 2002
Carolyn R. Willis Officer-In-Charge	6 Jul 2011
Teresa G. Cochran Officer-In-Charge	13 Jan 2012
Angela D. Ridley Officer-In-Charge	15 Feb 2012
Lutricia Mitchell Officer-In-Charge	
Pamela K. Valle	6 Oct 2012
James Brian Townsend	7 Jul 2018
Janet Evers Officer-In-Charge	18 Jul 2019
Pete Huntley Officer-In-Charge	5 Dec 2019
Michael G. Smithe	1 Feb 2020



Type 3  
31 mm Black  
1906 Type A/1 4-Bar  
28 Oct 1909  
5 Dec 1912



Type 4  
32 mm Purple  
1910 Type B 4-Bar  
30 Jan 1914  
22 Feb 1916



Type 5  
33 mm Black  
1925 Type C/1 4-Bar  
13 Feb 1932  
  
33 mm Purple  
10 Oct 1932



Type 6  
32.5 mm Black  
1936 Type F/1 4-Bar  
6 Jul 1939  
23 Sep 1946



Type 7  
30.5 mm Black  
Metal Duplex Type ?  
23 Mar 1949  
1 Sep 1955



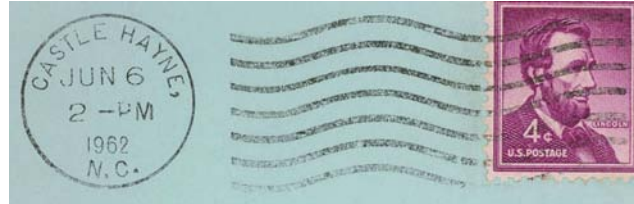
# NEW HANOVER COUNTY

Castle Hayne, Castle (Cont.)

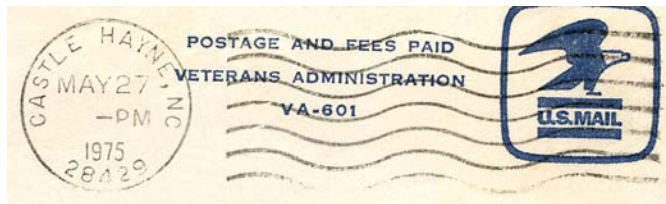
(New Hanover)



Type 8  
29 Mm Magenta  
8 Feb 1952



Type 9  
23 mm Black  
International Machine  
Type AT/S 2712  
5 Apr 1962  
May 1965



Type 10  
23 mm Black  
International Machine  
Type ATS/z 2712 (28429)  
2 Feb 1966  
24 Jan 1969

Type 11  
23 mm Black  
International Machine  
Type ATS/z 2724 (28429)  
6 Dec 1966  
18 Nov 1975



Type 12  
32.5 mm Black  
1963 Type F/2 4-Bar (28429)  
9 Apr 1968  
22 Jun 1971

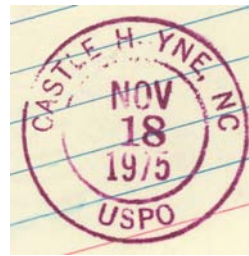
NEW HANOVER COUNTY

Castle Hayne, Castle (Cont.)

(New Hanover)



Type 13  
32.5 mm Black  
1963 Type F/2 4-Bar (28429)  
20 Aug 1973  
18 Nov 1975



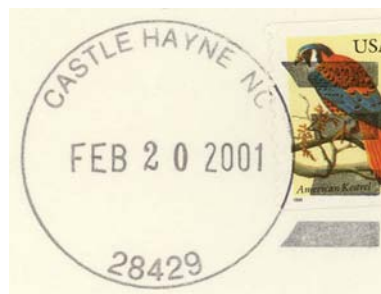
Type 14  
30 mm Magenta  
18 Nov 1975



Type 15  
35.5 mm Black  
1963 Type F/2 4-Bar (28429)  
27 Mar 1984  
8 Apr 1992



Type 16  
30 mm Magenta  
8 Apr 1992



Type 17  
35.5 mm Black  
Self-Inking Postmarker (28429)  
7 Aug 1996  
20 Feb 2001

## NEW HANOVER COUNTY

### Castle Hayne, Castle (Cont.)

(New Hanover)



Type 18  
30 mm Black  
Self-Inking Postmarker (28429)  
11 Sep 2006

### Colvin's Creek

(New Hanover)

Joel L. Moore	16 Feb 1853
Discontinued	24 Mar 1855
Joel L. Moore	16 Jan 1857
Daniel McDuffie	28 Dec 1857
Daniel McDuffie, CSA	6 Jul 1861
CSA office closed on or before	30 Apr 1865
Alfred H. Padderson	29 May 1866
Thomas Rooks	25 Sep 1866
William B. Hunt	10 Jul 1867
John R. Paddison	19 Jan 1869
Name changed to <b>Point Caswell</b>	28 Mar 1870

### Cypress Grove (1)

(New Hanover)

James O. Bowden	26 Dec 1849
Moved to Burgaw Depot	24 Jan 1854

### Cypress Grove (2)

(New Hanover)

John N. Bowden	4 Sep 1855
Discontinued	2 Sep 1856

## NEW HANOVER COUNTY

### Doctor's Creek

(New Hanover)

James Stringfield	29 Jun 1857
Discontinued	21 May 1858

### Dogwood Grove

(New Hanover)

John W. Cowan	20 Jun 1855
John W. Cowan, CSA	4 Jul 1861
CSA office closed on or before	30 Apr 1865
Federal office discontinued	5 Dec 1866

### Federal

(New Hanover)

Stephen Keyes	1 Aug 1890
Discontinued	28 Sep 1891
Mail to Wilmington	

### Federal Point

(New Hanover)

John Taylor	28 Dec 1882
Ambrose S. Loriner	16 Feb 1883
Discontinued	13 Jun 1883
Papers to Wilmington	

## NEW HANOVER COUNTY

### Fort Fisher, see Kure Beach

(New Hanover)

Miss Mitan or Mitson O. Saunders 19 Mar 1942  
Appointment rescinded 8 May 1942

### Harrell's Store

(New Hanover)

James Harrell 27 Jul 1837  
Collin Lewis 22 Jan 1852  
James L. Bland 26 Aug 1852  
Ollen M. Lewis 4 Feb 1853  
O. M. Lewis, CSA 5 Jul 1861  
CSA office closed on or before 30 Apr 1865  
Joseph W. Bland 9 Apr 1866  
Algeron E. Colwell 10 Nov 1874  
To Sampson County 16 Sep 1875

Confederate

*Harrell's Store N.C.*  
*July 19<sup>th</sup>*

Manuscript  
19 Jul 1861

### Higgins' Mills

(New Hanover)

Postmaster unknown by 1862  
CSA office closed on or before 30 Apr 1865

### Hilton, name changed from Lillington

(New Hanover)

William T. Newell, CSA 19 Jun 1862  
CSA office closed on or before 30 Apr 1865

Confederate

*Hilton n.c.*  
*Sept, 11*

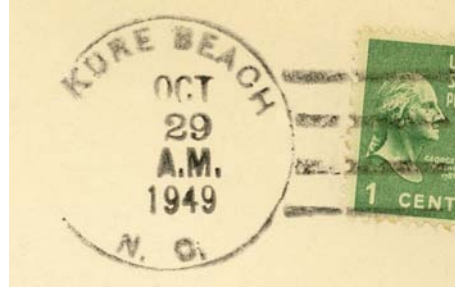
Manuscript  
11 Sep 1863

# NEW HANOVER COUNTY

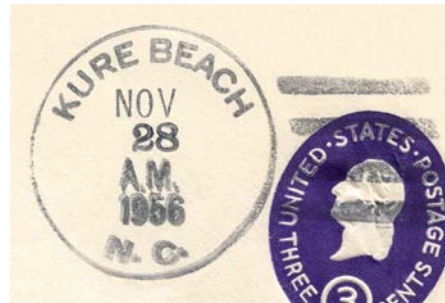
## Kure Beach

(New Hanover)

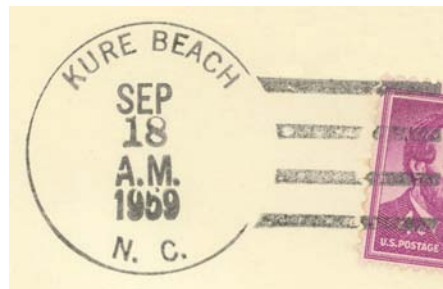
Miss Mitson Ouida Saunders	8 May 1942
Mrs. Mildred S. Bartlett, Acting	31 Aug 1961
Mrs. Mildred S. Bartlett	16 Jul 1962
Mrs. Clara G. Danner Officer-In-Charge	31 Jan 1977
Frieder O. Schultz Officer-In-Charge	27 May 1977
Arthur W. Player Officer-In-Charge	23 Sep 1977
Barbara Y. Spital Officer-In-Charge	4 Nov 1977
Faye H. Teague Officer-In-Charge	6 Mar 1978
Mrs. Clara G. Danner	1 Jul 1978
Gary E. Teague Officer-In-Charge	31 Oct 1980
Faye H. Teague	21 Feb 1981
Delois Ingram Officer-In-Charge	26 Aug 1987
Patricia W. Compton	16 Jan 1988
Sonya W. Garner Officer-In-Charge	19 Feb 1997
George D. Young	8 Nov 1997
Gary E. Teague Officer-In-Charge	9 Mar 2001
Gary E. Teague	19 May 2001
Alice R. Coe	5 Feb 2005
Linda J. McGhee Officer-In-Charge	19 Oct 2006
Teresa A. Noles Officer-In-Charge	23 Jan 2007
Teresa A. Noles	4 Aug 2007
Rhonda Frost Officer-In-Charge	5 Aug 2020
Joy L. Rhinehart Brown	13 Mar 2021



Type 1  
34 mm Black  
1936 Type F/1 4-Bar  
29 Oct 1949  
4 Nov 1951



Type 2  
33 mm Black  
1936 Type F/1 4-Bar  
10 Nov 1954  
28 Nov 1956



Type 3  
33 mm Black  
1936 Type F/1 4-Bar  
16 Jun 1959  
15 Jan 1965



Type 4  
33 mm Black  
1963 Type F/2 4-Bar (28449)  
13 May 1967



Type 5  
32 mm Black  
1963 Type F/2 4-Bar (28449)  
28 Mar 1969

# NEW HANOVER COUNTY

Kure Beach (Cont.)

(New Hanover)



Type 6  
33 mm Black  
1963 Type F/2 4-Bar (28449)  
22 Feb 1971  
14 Jul 1975



Type 7  
35.5 mm Black  
1963 Type F/2 4-Bar (28449)  
(killer appears to have broken off)  
30 Jan 1978  
3 Jun 1978



Type 8  
34 mm Black  
1963 Type F/2 4-Bar (28449)  
11 May 1982



Type 9  
37.5 mm Black  
Self-Inking Postmarker (28449)  
1 Nov 1994



Type 10  
29.5 mm Red  
Self-Inking Postmarker (28449)  
7 Jul 1998

## NEW HANOVER COUNTY

### Kure Beach (Cont.)

(New Hanover)



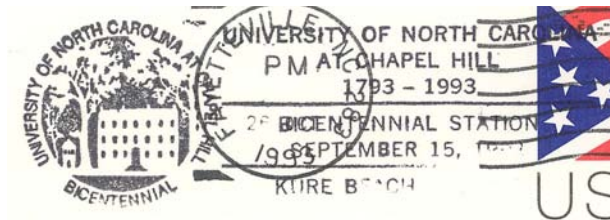
Type 11  
32 mm Black  
Self-Inking Postmarker (28449)  
14 Nov 2000



Type 12  
31.5 mm Red  
Self-Inking Postmarker (28449)  
4 Dec 2006

### Temporary Station Cancels

UNC Bicentennial Station



Type 1  
76 x 24.5 mm Black  
15 Sep 1993

### Lillington, name changed from Long Creek

(New Hanover)

Evan L. Miller	26 Apr 1859
William T. Newell	6 Oct 1859
William T. Newell, CSA	16 Jul 1861
Name changed to <b>Hilton</b>	19 Jun 1862
Office re-established as Lillington	
J. A. Duponge	9 Apr 1866
William B. Larkins	1 Aug 1867
Discontinued	14 Sep 1868
Charles H. Manning	20 Sep 1869
William W. Myers	24 Jan 1870
Samuel H. Bell	24 Feb 1871
Name changed to <b>Long Creek</b>	19 Oct 1874

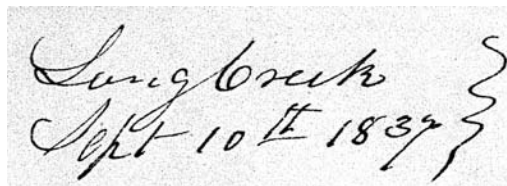


## NEW HANOVER COUNTY

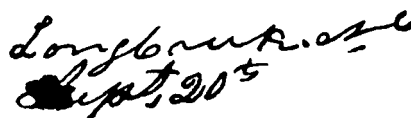
### Long Creek Bridge, Long Creek

(New Hanover)

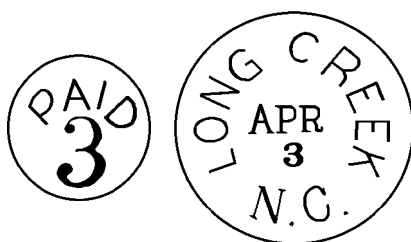
William H. Van	23 Dec 1825
Name changed to <b>Long Creek</b>	17 Oct 1828
John Larkin	17 Oct 1828
Discontinued	10 May 1833
Charles Montague	20 Sep 1833
Benjamin Larkins	29 Mar 1839
Samuel H. Bell	10 Jan 1842
John Jones	29 May 1856
Evan L. Miller	17 Jun 1856
Name changed to <b>Lillington</b>	26 Apr 1859
Name changed to <b>Long Creek</b>	
Samuel H. Bell	19 Oct 1874
To Pender County	16 Feb 1875



Manuscript  
10 Sep 1937



Manuscript  
20 Sep 1849



Type 1  
31 mm Black  
5 Apr 1855  
20 Aug 1858

### Masonborough, Masonboro

(New Hanover)

Alonzo Hewlett	17 Jul 1890
Discontinued	28 Sep 1891
Papers to Wilmington	

### Moore's Creek

(New Hanover)

George W. McAlester	27 Jul 1837
Charles B. McAlester	29 Dec 1838
Isaac M. Alderman	1 May 1851
Owen Alderman	12 Jan 1858
CSA activity reported; postmaster unknown	
CSA office closed on or before	30 Apr 1865
Federal office discontinued	11 Dec 1866
Samuel B. Rivenbark	10 Jun 1869
Robert T. Rivenbark	6 Aug 1873
To Pender County	16 Feb 1875

## NEW HANOVER COUNTY

### Moseley

(New Hanover)

Nicholas F. Nixon 11 Jun 1884  
Discontinued 6 Mar 1885  
Papers to Wilmington

### Nonesta

(New Hanover)

Dallie Wadsworth 20 May 1930  
H. B. Wadsworth, Sr., Acting 31 Oct 1930  
Hiram B. Wadsworth 14 Jan 1931  
Discontinued 15 Sep 1931  
Mail to Wilmington

### Oakley

(New Hanover)

Samuel A. Howard 30 Apr 1859  
Samuel A. Howard, CSA 6 Jul 1861  
CSA office closed on or before 30 Apr 1865  
Federal office discontinued 11 Dec 1866  
Margaret M. Bethea 31 Aug 1869  
Discontinued 26 Apr 1871

Confederate



Manuscript  
15 Mar 1865

### Pleasant District, name changed from Beatty's Bridge

(New Hanover)

Hays W. Beatty 15 Jan 1833  
George W. Bonnerman 21 Aug 1840  
Discontinued 28 Oct 1840

*Pleasant District R,  
Oct 14*

Manuscript  
14 Oct 1839

## NEW HANOVER COUNTY

### Point Caswell, name changed from Colvin's Creek

(New Hanover)

John R. Peddison	28 Mar 1870
Discontinued	8 Aug 1870
Ludwig Vollers	7 Oct 1870
John R. Paddison	16 Apr 1874
To Pender County	16 Feb 1875

### Rocky Point, name changed from Spring Garden

(New Hanover)

Samuel Berry	16 Apr 1860
CSA activity reported, postmaster unknown	
CSA office discontinued	3 Jan 1862
James H. Durham, Jr.	26 Mar 1866
Stephen F. Miller	23 Apr 1866
Samuel S. Berry	26 Jun 1866
James H. Durham	15 Feb 1867
Edgar H. McQuigg	25 Nov 1867
Everett T. Wood	19 Jan 1869
Discontinued	6 Jul 1869
Everet T. Wood	15 Jul 1869
Augustus Gemberg	7 Jan 1875
To Pender County	16 Feb 1875

### Scott's Hill

(New Hanover)

Joseph M. Foy	15 Oct 1851
CSA activity reported, postmaster unknown	
CSA office closed	by Dec 1862
Federal office discontinued	11 Dec 1866

### Sea Gate

(New Hanover)

Levina E. Rogers	28 Jun 1910
M. P. Harrell	26 Nov 1913
Levina E. Rogers	4 Mar 1918
Discontinued	15 Feb 1932
Mail to Wilmington	



Type 1  
30 mm Black  
1908 Type A/2 4-Bar  
11 Mar 191x

## NEW HANOVER COUNTY

### Sea Gate (Cont.)

(New Hanover)



Type 2  
32 mm Black  
1910 Type B 4-Bar  
17 Aug 1915



Type 3  
32.5 mm Black  
1924 Type D 4-Bar  
15 Feb 1932

### Sills Creek

(New Hanover)

Alexander Lamont	23 Oct 1844
John D. Powers	4 May 1848
Robert J. Johnson	23 Sep 1850
Discontinued	29 Sep 1851
John A. McInnis	20 Dec 1851
John E. Johnston	27 Jan 1853
J. E. Johnston, CSA	3 Jul 1861
A. D. McDonald, CSA	13 Aug 1861
CSA office closed on or before	30 Apr 1865
Federal office re-established	
Name changed to <b>Camera</b>	20 Oct 1865

Sills Creek N.C.  
May

Manuscript  
May 1853

### Snug Haven

(New Hanover)

William O. Shepherd	2 Oct 1916
Discontinued	4 Nov 1920
Mildred R. Karnegay	5 Mar 1921
Discontinued	15 Mar 1922
Mail to Wilmington	



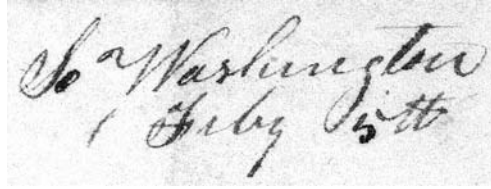
Type 1  
32.5 mm Black  
1910 Type B 4-Bar  
17 Nov 1917

## NEW HANOVER COUNTY

### South Washington

(New Hanover)

John James	18 Dec 1794
Discontinued	by 1796
William Hall	by 1813
Charles W. Hooks	7 Oct 1820
William Usher	14 Nov 1823
George G. Doan	16 Nov 1825
Discontinued	ca. 1826
George H. McMillan	14 Apr 1830
Richard Saunders	10 Apr 1833
Dempsey Harrell	5 Oct 1838
Name changed to <b>Washington Depot</b>	16 Jun 1841
Name changed to <b>South Washington</b>	
Rufus Garriss	27 Jul 1870
John Rivenbark	28 Jul 1873
To Pender County	16 Feb 1875



Manuscript  
1 Feb 1834

### Spring Garden

(New Hanover)

Thomas W. Devane	8 Mar 1852
Anthony D. Bourdeaux	8 Sep 1853
James R. Bunting	30 Mar 1855
George I. Moore	15 Jun 1855
Hulda Moore	2 Oct 1858
David E. Bunting	7 Feb 1859
Hulda Moore	12 Mar 1859
Joel Hines	24 Dec 1859
Thomas Chatterton	24 Mar 1860
Discontinued	25 Jun 1860
Name changed to <b>Rocky Point</b>	

### Swirchback

(New Hanover)

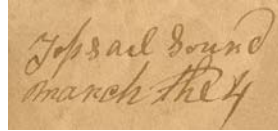
Cyrus S. Van Amringe	9 Jun 1890
Discontinued	15 Sep 1890
Papers to Wilmington	

## NEW HANOVER COUNTY

### Topsail Sound

(New Hanover)

John Howard	10 May 1842
John Howard, CSA	6 Jul 1861
CSA office closed on or before	30 Apr 1865
Federal office discontinued	11 Dec 1866
Mary M. Burton	15 Jul 1869
Discontinued	27 Nov 1872
William H. King	23 Jun 1874
To Pender County	16 Feb 1875



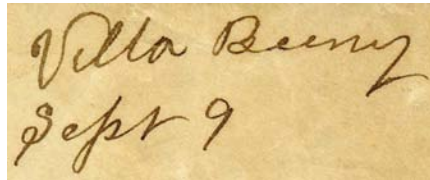
Manuscript  
4 Mar 1856

### Villa Bury

(New Hanover)

Samuel J. Bury	12 Feb 1862
CSA office closed on or before	30 Apr 1865

Confederate



Manuscript  
9 Sep 186x

### Washington Depot, name changed from South Washington

(New Hanover)

Charles S. Garriss	16 Jun 1841
Discontinued	6 Jul 1844

### Wrightsville

(New Hanover)

Kate W. Manning	6 Jul 1881
William H. Stokely	11 Apr 1898
James N. Gibbons	13 Feb 1903
Vance Norwood	26 Sep 1904
William G. Dizor	2 Dec 1905
Thomas McDonald	27 Dec 1906
Discontinued	15 Nov 1907
Mail to Wilmington	
Arthur P. Southerland	2 Sep 1908
Katherine Ray	11 Jun 1909
Discontinued	15 Nov 1909



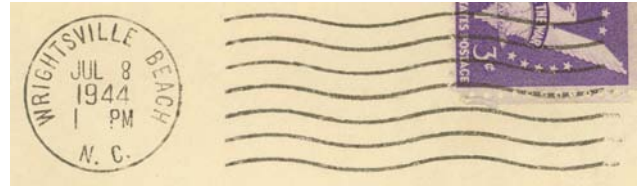
Type 1  
27.5 mm Black  
14 Sep 1891

# NEW HANOVER COUNTY

## Wrightsville Beach

(New Hanover)

Horace C. Johnson	6 Oct 1941
Mrs. Thurber G. Dickinson, Acting	31 Mar 1945
Mrs. Thurber G. Dickinson	6 Aug 1946
Ennis T. Robinson, Acting	30 Jun 1958
Walker T. Brown, Acting	31 Mar 1961
Walker T. Brown	24 Jul 1961
Mrs. Lanelle F. Strother Officer-In-Charge	17 Sep 1971
Edward L. Palmeto	22 Jan 1972
Edgar E. Long Officer-In-Charge	12 Jun 1980
George D. Young	13 Dec 1980
Patricia Franklin Officer-In-Charge	15 Aug 1986
Eddie E. Long	20 Dec 1986
Rosemary Kenney Officer-In-Charge	12 Oct 1990
Robert L. Burkhardt	4 May 1991
Darlene M. Parrow Officer-In-Charge	1 Oct 1992
Darlene M. Parrow	20 Feb 1993
Phoebe R. Jordan Officer-In-Charge	1 Aug 2001
Brenda C. Morton	17 Nov 2001
Luther B. Black Jr.	5 Feb 2005
Dora M. Gaudin Officer-In-Charge	23 Nov 2005
Teresa A. Noles Officer-In-Charge	27 Jan 2006
Iccie Walden Officer-In-Charge	10 Jan 2007
Michael G. Smithe Officer-In-Charge	18 Sep 2007
Linda C. Gordon Officer-In-Charge	30 Jan 2008
Terry D. Rockwell	5 Jul 2008
Rebecca Duncam Officer-In-Charge	16 Sep 2014
Virginia Hayes Officer-In-Charge	27 Mar 2015
Cynthia A. Horgar	18 Apr 2015
Kathy Hodges Officer-In-Charge	
Rebecca Helms Officer-In-Charge	20 Aug 2018
Terry D. Rockwell Officer-In-Charge	10 Oct 2018
Terry D. Rockwell	10 Nov 2018



Type 1  
20.5 mm Black  
Universal Machine  
Type DT 200K  
8 Jul 1944  
7 May 1957



Type 2  
31.5 mm Black  
31 Jul 194x



Type 3  
21.5 mm Black  
International Machine  
Type J30  
22 Sep 1960  
27 Jan 1965



Type 4  
21.5 mm Black  
International Machine  
Type Hz30 (28480) ("BEACH")  
3 Jan 1966  
14 Oct 1968

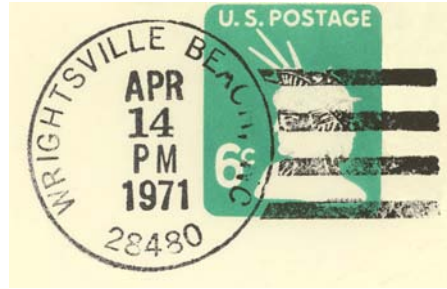


Type 5  
21 mm Black  
International Machine  
Type Hz30 (28480) ("BCH")  
8 Jan 1970  
15 Jul 1975

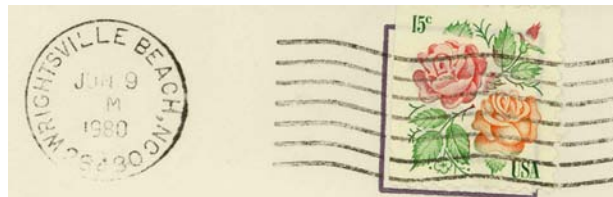
NEW HANOVER COUNTY

Wrightsville Beach (Cont.)

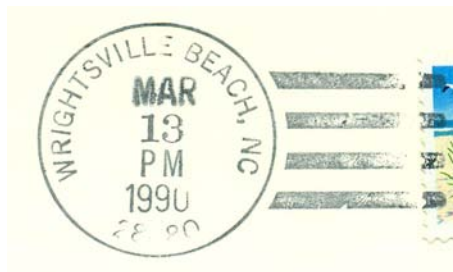
(New Hanover)



Type 6  
32.5 mm Black  
1963 Type F/2 4-Bar (28480)  
14 Apr 1971



Type 7  
21.5 mm Black  
International Machine  
Type Hz30 (28480) ("BEACH")  
9 Jan 1976  
10 Mar 1982



Type 8  
31 mm Black  
1963 Type F/2 4-Bar (28480)  
13 Mar 1990



Type 9  
33.5 mm Black  
Self-Inking Postmarker  
Type 3A (28480)  
7 Apr 1994



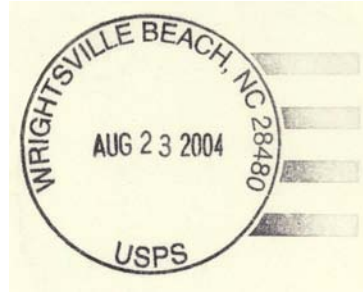
Type 10  
31 mm Red  
Self-Inking Postmarker (28480)  
22 Jan 2001



## NEW HANOVER COUNTY

### Wrightsville Beach (Cont.)

(New Hanover)



Type 11  
34.5 mm Black  
Self-Inking Postmarker (28480)  
23 Aug 2004  
20 Aug 2007

M.O.B.  
(Money Order Business)



Type 1  
29.5 mm Magenta  
19 Jun 1951

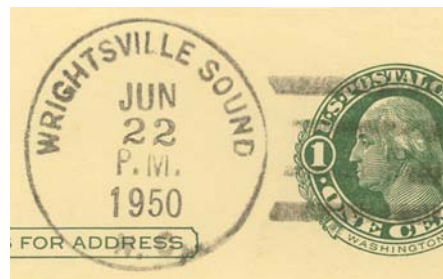
### Wrightsville Sound

(New Hanover)

Evelyn B. Hall	23 Apr 1923
Ida M. Benson	31 Dec 1923
Florence R. Hanby	9 Mar 1925
Mamie J. Fennell	31 Aug 1950
Frank A. Montgomery, Acting	8 Mar 1952
Frank A. Montgomery	8 Apr 1952
Constance S. Taylor, Acting	7 Jul 1954
Discontinued	30 Apr 1955
Mail to Wilmington	



Type 1  
32 mm Black  
1930 Type E 4-Bar  
22 May 193x



Type 2  
32.5 mm Black  
1936 Type F/1 4-Bar  
5 Aug 1946  
22 Jun 1950

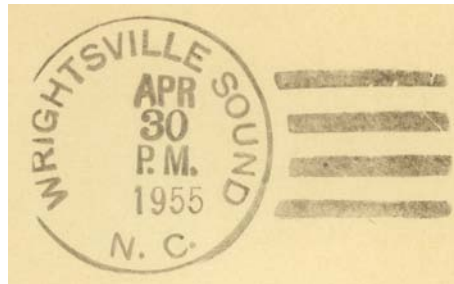
NEW HANOVER COUNTY

Wrightsville Sound (Cont.)

(New Hanover)



Type 3  
33.5 mm Black  
1936 Type F/1 4-Bar  
20 Oct 195x  
23 Feb 1952



Type 4  
33.5 mm Black  
1936 Type F/1 4-Bar  
10 Dec 1954  
30 Apr 1955