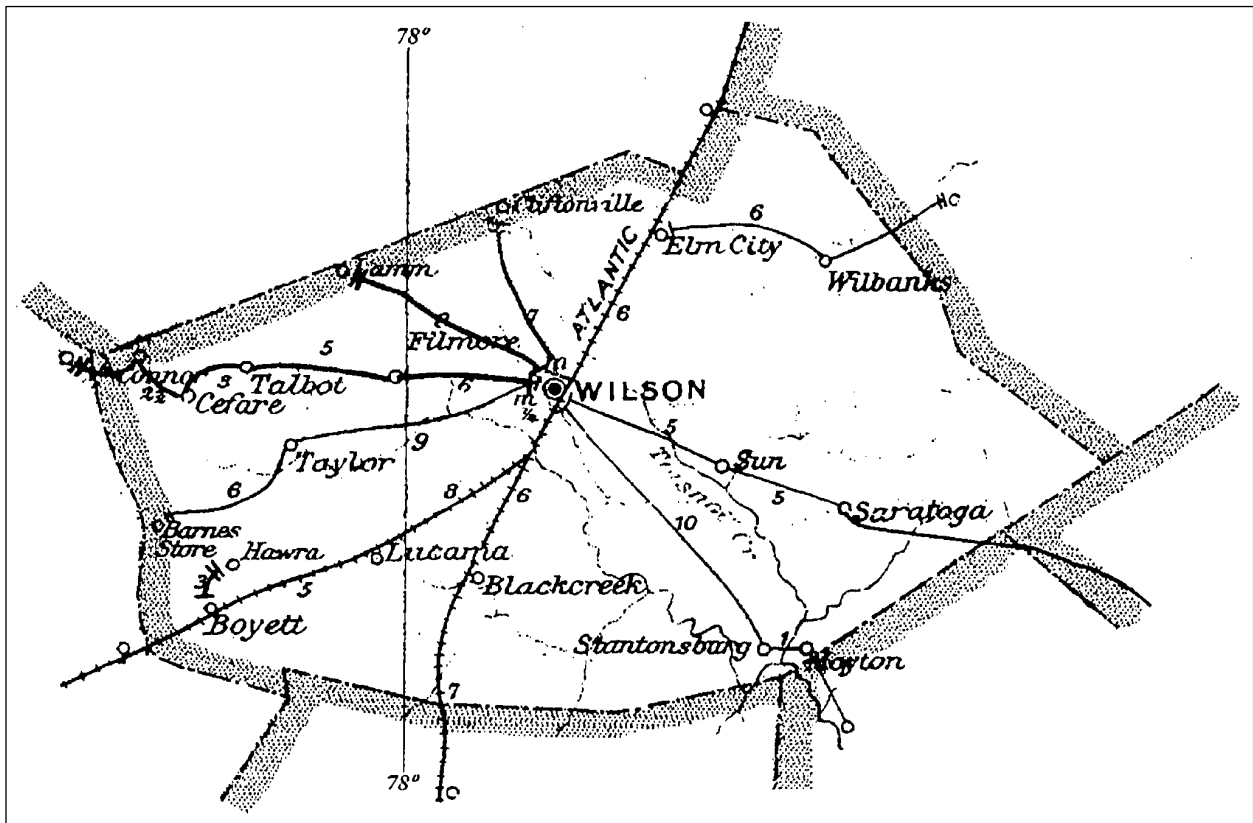


# WILSON COUNTY

Established 13 February 1855  
From Edgecombe, Johnston, Nash, and Wayne Counties

Number of Post Offices - 30  
Number with postmarks known - 17



## WILSON COUNTY

### Barnes Store, Barne's Store

(Wilson)

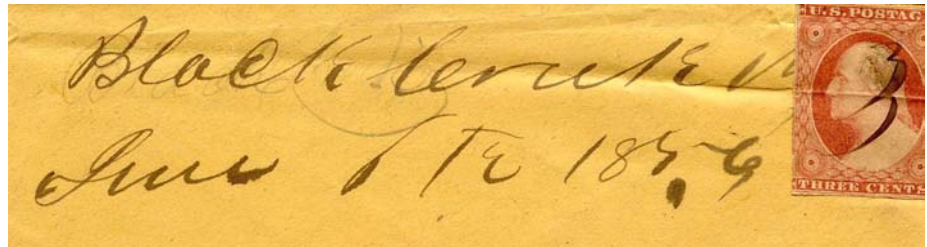
Elias G. Barnes            24 Dec 1877  
 Charles W. Knight        16 Aug 1892  
 Discontinued            28 Feb 1907  
 Mail to Kenly, Johnston County



Type 1  
 27 mm Black  
 24 Jan 1901  
 30 Jul 1901

### Black Creek, moved from Wayne County

(Wilson)



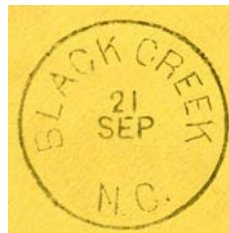
Henry R. Davis            13 Feb 1855  
 J. L. Joyner                26 Aug 1856  
 Robert M. Cox            9 Oct 1856  
 Robert M. Cox, CSA        4 Jul 1861  
 CSA office closed on or before 30 Apr 1865  
 Miss Peunina Bone        3 Feb 1866  
 Elizabeth Christmas      23 Apr 1866  
 Joseph S. Holt            7 Dec 1874  
 William H. Lamm         5 Oct 1889  
 Augustus Barnes         8 Apr 1893  
 George B. Lamm         19 Jan 1899  
 Augustus Barnes         16 Apr 1901  
 George A. Smith         6 Nov 1912  
 Louetta P. Flowers       24 Dec 1919  
 Herman Bone, Acting     3 Nov 1925  
 Herman Bone             10 Mar 1926  
 Mrs. Cenie B. Lamm, Acting 19 Jan 1962  
 Mrs. Cenie B. Lamm      7 Dec 1962  
 Edith S. Daniel          17 Mar 1984  
 Janet Eltz Officer-In-Charge 29 Jul 1989  
 Joyce T. (Ruffin) Raper   13 Jan 1990  
 Converted to Level 6 (6-hour) Remotely Managed Post Office of Lucama. The postmaster position remained until ultimately vacated.        10 Jan 2015

Manuscript  
 6 Jun 1856

#### Reconstruction



Type 1  
 25 mm Black  
 14 Oct 187x



Type 2  
 27.5 mm Black  
 21 Sep 187x

WILSON COUNTY

Black Creek (Cont.)

(Wilson)



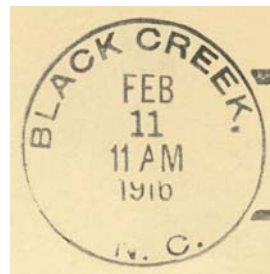
Type 3  
33 mm Green  
18 Jul 1891



Type 4  
30 mm Black  
27 Apr 1895



Type 5  
27.5 mm Black  
7 May 1901



Type 6  
32.5 mm Black  
1910 Type B 4-Bar  
16 May 1911  
11 Feb 1916

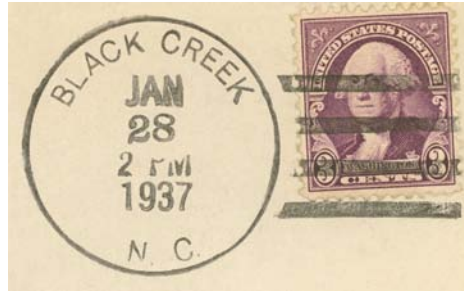


Type 7  
32.5 mm Black  
1925 Type C/1 4-Bar  
23 Dec 1931

# WILSON COUNTY

## Black Creek (Cont.)

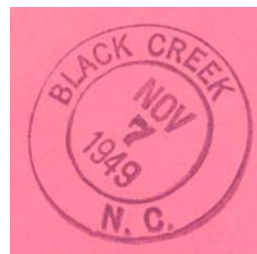
(Wilson)



Type 8  
34 mm Black  
1936 Type F/1 4-Bar  
28 Jan 1937  
20 Oct 1937



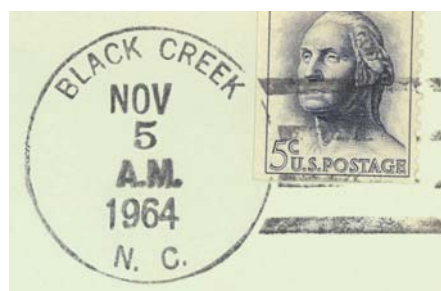
Type 9  
30.5 mm Black  
Metal Duplex Type ?  
1 Nov 1948



Type 10  
29 mm Magenta  
7 Nov 1949



Type 11  
32 mm Black  
1936 Type F/1 4-Bar  
7 Nov 1949  
30 Jun 1961



Type 12  
33.5 mm Black  
1936 Type F/1 4-Bar  
11 Aug 1964  
5 Nov 1964

# WILSON COUNTY

## Black Creek (Cont.)

(Wilson)



Type 13  
33.5 mm Black  
1963 Type F/2 4-Bar (27813)  
13 Apr 1965  
18 Aug 1969



Type 14  
38 mm Black  
Non-standard 4-Bar (27813)  
17 Apr 1972



Type 15  
31.5 mm Black  
1963 Type F/2 4-Bar (27813)  
10 Jan 1975  
4 Dec 1979



Type 16  
36 mm Black  
Non-standard 4-Bar (27813)  
31 Aug 1987  
8 Feb 1989



Type 17  
34.5 mm Black  
1963 Type F/2 4-Bar (27813)  
10 May 1991  
26 Apr 1993

## WILSON COUNTY

### Black Creek (Cont.)

(Wilson)



Type 18  
29.5 mm Magenta  
13 Jun 1996



Type 19  
33.5 mm Red  
Self-Inking Postmarker (27813)  
18 Oct 2006  
8 Sep 2007

### Boyett

(Wilson)

Nathan Boyett	14 Mar 1888
William H. Kirby	19 Jan 1893
William F. Rowe	25 May 1897
William A. Barnes	23 Dec 1903
Nathaniel Kirby	5 Feb 1904
Discontinued	31 May 1905
Mail to Kenly, Johnston County	



Type 1  
28 mm Black  
18 Oct 1892

### Bridgersville

(Wilson)

John F. Bridgers	17 Sep 1889
Name changed to <b>Wilbanks</b>	7 May 1895

### Cefare

(Wilson)

Cefare Bissett	15 Sep 1899
John D. Lewis	11 Dec 1901
Dorsey H. Boykin	18 Feb 1902
Discontinued	14 May 1904
Mail to Taylor	

# WILSON COUNTY

## Cliftonville

(Wilson)

Arthur W. Parker            5 Oct 1895  
 Discontinued                30 Jun 1902  
 Mail to Wilson



Type 1  
 28.5 mm Black  
 8 Mar 1898

## Connor

(Wilson)

Dempsey M. Stott            14 Aug 1890  
 Henry B. High                30 Sep 1893  
 Discontinued                21 Sep 1894  
 Mail to Eatmon, Nash County  
 Allison High                10 Nov 1894  
 Henry B. High                20 Jul 1901  
 Discontinued                15 May 1904  
 Mail to Taylor

## Elm City, name changed from Toisnot

(Wilson)

George H. Griffin            20 Mar 1891  
 William D. Carter            24 May 1893  
 William G. Sharp            11 Jun 1897  
 Richard H. Sharp            18 Jan 1904  
 Jesse D. Sharp               22 Dec 1906  
 Russell A. Strickland        6 May 1913  
 William C. Thorne, Acting   24 Jun 1927  
 William C. Thorne            4 Jan 1928  
 Basil G. Farmer              20 Apr 1936  
 Myrtle L. Winstead, Acting   6 Mar 1943  
 Basil G. Farmer              31 Oct 1945  
 Henry A. Capps, Jr. Officer-In-Charge   31 Dec 1976  
 Russell D. Cockrell         15 Jan 1977  
 Stephen M. Burnette Officer-In-Charge   30 Dec 1997  
 Sam Bryant Jr.                28 Feb 1998  
 Delphine B. Thompson Officer-In-Charge   17 Aug 2000  
 Gloria B. Parker              18 Nov 2000  
 Lowell Allen Smoot II        15 Nov 2014  
 David K. Joyner               10 Dec 2016



Type 1  
 28 mm Black  
 21 Aug 1891  
 2 Jun 1897



Return After Ten Days  
 To \ELM-CITY N.C.



Type 2  
 29 mm Black  
 18 Jul 1898  
 19 Mar 1904



Type 3  
 30 mm Black  
 Metal Duplex Type H2  
 4 May 1907  
 7 Oct 1913

# WILSON COUNTY

Elm City (Cont.)

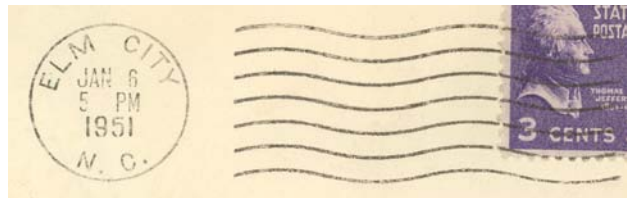
(Wilson)



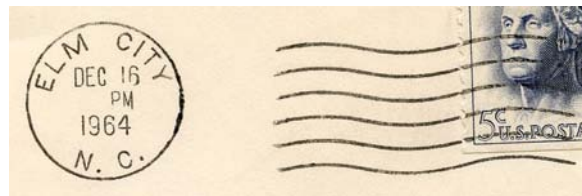
Type 4  
30 mm Black  
Metal Duplex Type H2  
9 Mar 1931  
9 Apr 1932



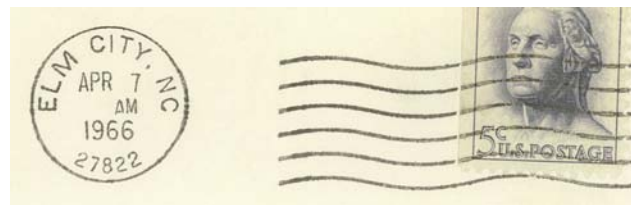
Type 5  
30.5 mm Black  
Metal Duplex Type E2  
18 May 1938  
16 Oct 1941



Type 6  
21 mm Black  
Type DT 200K  
17 Nov 1942  
21 Mar 1960



Type 7  
21 mm Black  
Type DT 300  
16 Dec 1964  
11 Jan 1966



Type 8  
21 mm Black  
Type DTSz 300  
7 Apr 1966  
4 Jan 1975



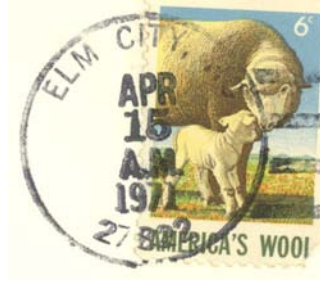
Type 9  
21.5 mm Black  
International Machine  
Type Hz30 (27822)  
5 Jun 1970  
5 Nov 1974



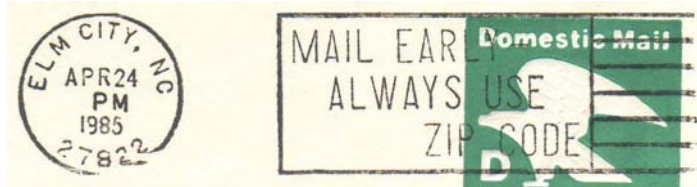
WILSON COUNTY

Elm City (Cont.)

(Wilson)



Type 10  
33 mm Black  
1963 Type F/2 4-Bar (27822)  
15 Apr 1971



Type 11  
21.5 mm Black  
International Machine  
Type Hz 400 (Mail Early-/Always  
Use/ZIP Code)(27822)  
17 Dec 1975  
16 Feb 1993



Type 12  
23.5 mm Black  
Pitney Bowes Machine  
Type BTSz 200 (27822)  
(narrow ZIP nos., large year nos.)  
31 Dec 1976



Type 13  
34.5 mm Black  
1963 Type F/2 4-Bar (27822)  
9 Jul 1990  
26 Nov 1993

34.5 mm Magenta  
26 Nov 1993

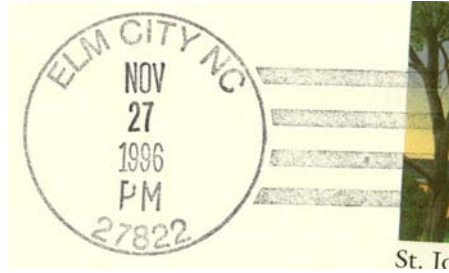


Type 14  
29.5 mm Red  
Self-Inking Postmarker  
26 Nov 1993

WILSON COUNTY

Elm City (Cont.)

(Wilson)



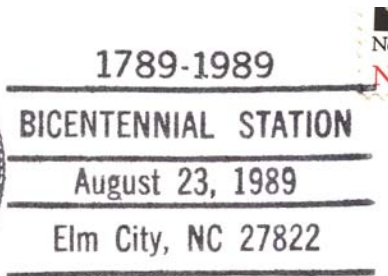
Type 15  
32 mm Black  
Self-Inking Postmarker  
Type 1A (27822)  
27 Nov 1996



Type 16  
35.5 mm Red  
Self-Inking Postmarker (27822)  
9 Nov 2006

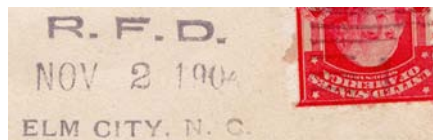
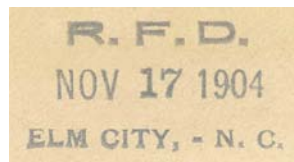
Temporary Station Cancels

Bicentennial Station

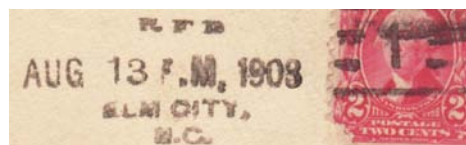


Type 1  
87 x 36.5 mm Black  
(27822)  
23 Aug 1989

Rural Free Delivery



Type 1W (1) Black  
2 Nov 1904  
17 Nov 1904



Type 2B(1) Black  
3 Aug 1903  
13 Aug 1903

# WILSON COUNTY

## Elm City (Cont.)

(Wilson)

Registered



Type 1  
29.5 mm Magenta  
4 Apr 1950

## Evansdale

(Wilson)

Maxey G. Rose	18 Apr 1908
Discontinued	15 Jun 1910

## Filmore

(Wilson)

Spencer Williamson	2 Feb 1893
L. Kanie Boykin	23 Mar 1900
William B. Kirby	20 Jan 1904
Discontinued	14 May 1904
Mail to Wilson	

## Finchmill

(Wilson)

Caswell F. Finch	21 Apr 1898
Discontinued	15 Mar 1901

## WILSON COUNTY

### Frederick

(Wilson)

Fannie Gay                      7 Jul 1894  
 Discontinued                  12 Jul 1895  
 Mail to Taylor

### Hawra

(Wilson)

Jesse P. Hawley                17 May 1898  
 Discontinued                  30 Sep 1903  
 Mail to Kenly, Johnston County

### Joyner's Depot, moved from Edgecombe County

(Wilson)

William D. Farmer              13 Feb 1855  
 William D. Farmer, CSA        6 Jul 1861  
 CSA office closed on or before 30 Apr 1865  
 George W. Griffin                3 Nov 1865  
 Name changed to **Toisnot**      29 Sep 1873

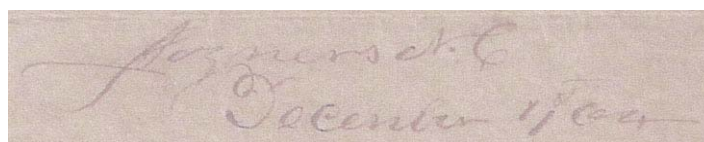


Manuscript  
 12 Dec 1857  
 5 Feb 1861

### Confederate



Manuscript  
 7 Oct 1863  
 16 Dec 1864



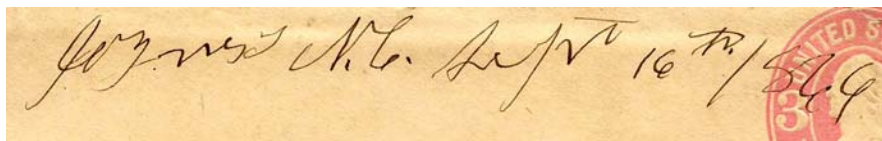
Manuscript  
 11 Dec 1864

## WILSON COUNTY

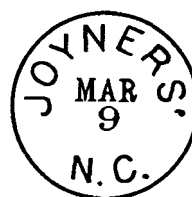
### Joyner's Depot (Cont.)

(Wilson)

#### Reconstruction



Manuscript  
16 Sep 1866  
13 Oct 1866



Type 1  
25 mm Black  
17 Feb 186x  
13 Jun 187x

### Lamm

(Wilson)

Thomas R. Lamm	25 Feb 1895
Charlie A. Lamm	18 Apr 1898
Discontinued	29 Sep 1906
Mail to Wilson	

### Lucama

(Wilson)

Lafayette F. Lucas	5 Dec 1884
Lethie H. Peele	1 Feb 1888
Addison T. Barnes	21 Jun 1893
McRae Boyett	1 May 1894
William H. Lamm	9 Sep 1898
Wiley H. Johnson	17 Mar 1906
Jesse Barnes	9 Jun 1914
Joseph E. Taylor	5 Jan 1922
Isaac A. Lamm, Acting	4 Dec 1922
Robert W. Taylor, Acting	13 Nov 1923
Robert W. Taylor	19 Dec 1923
James H. Newsom, Acting	28 Sep 1931
Zachery I. Capps	23 Feb 1932
Mrs. Lossie S. Campbell, Acting	2 Sep 1933
Mrs. Lossie S. Campbell	30 Jan 1934
Robert Willis Pope, Acting	30 Sep 1946
Robert Willis Pope	5 Apr 1948
Henry G. Dunn Jr. Officer-In-Charge	30 Jun 1972
Joseph B. Tripp Officer-In-Charge	18 Aug 1972
Nathaniel Roberson	12 May 1973
Donald Ray Barnes Officer-In-Charge	25 Jul 1980



Type 1  
27.5 mm Black  
8 Mar 1897



Type 2  
29 mm Black  
Metal Duplex Type H2  
25 Dec 1900  
19 Nov 1901

# WILSON COUNTY

## Lucama (Cont.)

(Wilson)

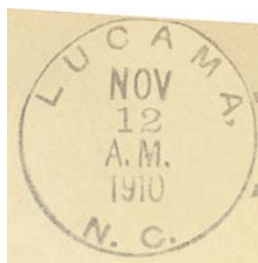
Adolph M. Harrell	1 Nov 1980
Joyce T. Ruffin Officer-In-Charge	30 Dec 1987
Donald R. Barnes	18 Jun 1988
Dallas H. Spence Jr. Officer-In-Charge	2 Sep 1992
George D. Bizzell	6 Feb 1993
Jeffrey R. Farmer Officer-In-Charge	14 Sep 1998
Jeffrey R. Farmer	2 Jan 1999
Teresa A. Jones	2 Sep 2017
Solange C. Mitchell	24 Sep 2022



Type 3  
31.5 mm Black  
1906 Type A/1 4-Bar  
20 Oct 1906  
14 Jun 1907



Type 4  
32.5 mm Black  
11908 Type A/2 4-Bar  
5 Nov 1908  
3 Jun 1909



Type 5  
31.5 mm Black  
1908 Type A/2 4-Bar  
12 Nov 1910  
28 May 1912



Type 6  
30 mm Black  
Metal Duplex Type H2  
6 Apr 1920  
8 Nov 1934

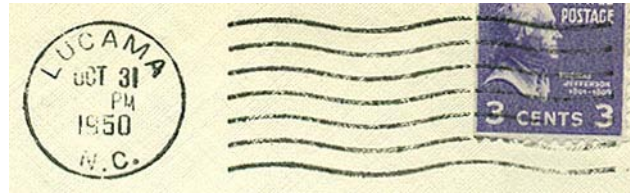


Type 7  
34 mm Black  
1936 Type F/1 4-Bar  
23 May 1944  
13 Mar 1946

# WILSON COUNTY

Lucama (Cont.)

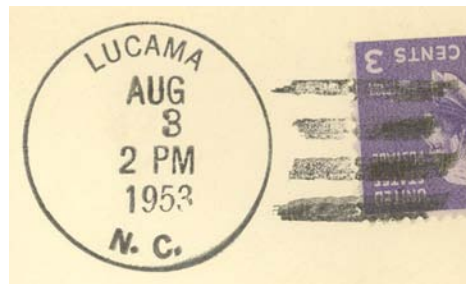
(Wilson)



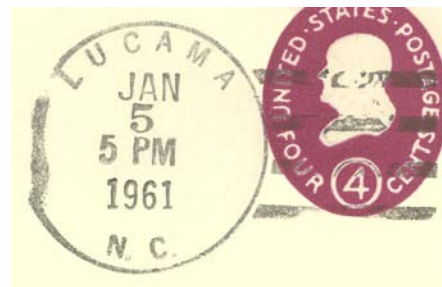
Type 8  
21 mm Black  
Type DT 200K  
21 Oct 1949  
8 Feb 1952



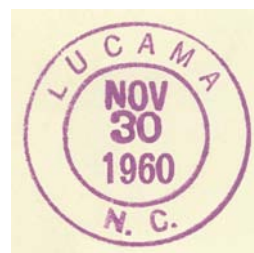
Type 9  
34.5 mm Black  
1936 Type F/1 4-Bar  
15 Mar 1950  
1 Jan 1952



Type 10  
33 mm Black  
1936 Type F/1 4-Bar  
3 Aug 1953  
4 Jan 1957



Type 11  
32.5 mm Black  
1936 Type F/1 4-Bar  
23 Jun 1959  
5 Jan 1961

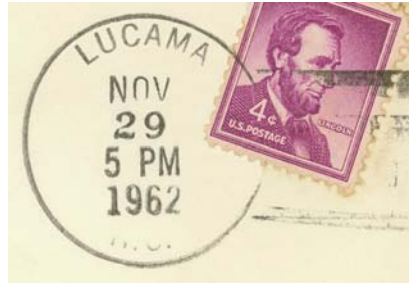


Type 12  
29.5 mm Magenta  
30 Nov 1960

WILSON COUNTY

Lucama (Cont.)

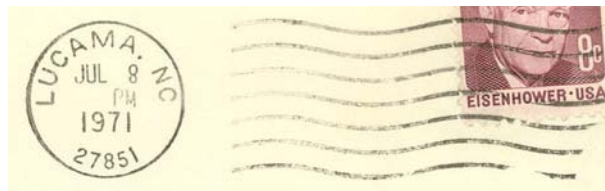
(Wilson)



Type 13  
32 mm Black  
1936 Type F/1 4-Bar  
29 Nov 1962



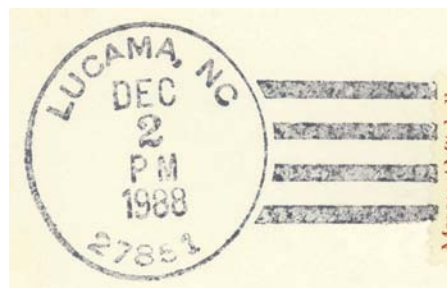
Type 14  
33.5 mm Black  
1963 Type F/2 4-Bar (27851)  
6 Sep 1965  
5 Nov 1971



Type 15  
21 mm Black  
Type DTSz 200K  
8 Jul 1971  
19 Jun 1997



Type 16  
32.5 mm Black  
(27851)  
5 Mar 1980



Type 17  
33 mm Black  
1963 Type F/2 4-Bar (27851)  
21 Mar 1975  
2 Dec 1988



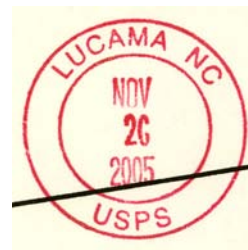
WILSON COUNTY

Lucama (Cont.)

(Wilson)



Type 18  
33.5 mm Black  
1963 Type F/2 4-Bar (27851)  
19 Jun 1997



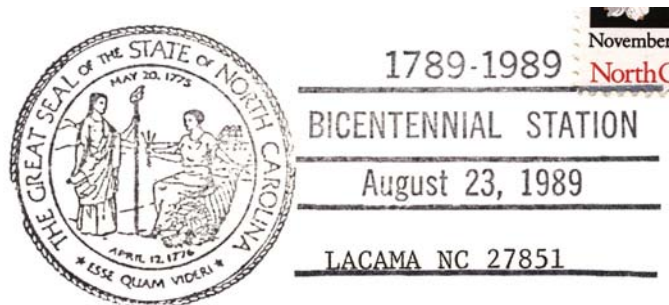
Type 19  
29.5 mm Red  
Self-Inking Postmarker  
26 Nov 2005



Type 20  
30.5 mm Red  
Self-Inking Postmarker (27851)  
8 Dec 2006

Temporary Station Cancels

Bicentennial Station



Type 1  
86.5 x 37 mm Black  
(Post office name typed but spelled "Lacama") (27851)  
23 Aug 1989

## WILSON COUNTY

### Meeksville

(Wilson)

Simon Barnes	14 Nov 1878
Theodore A. Hinnant	18 Mar 1898
J. L. Hinnant	28 Mar 1898
C. O. Hinnant	20 Jun 1898
Order rescinded	15 Apr 1899
Richard T. Renfrow	13 Jun 1900
Order rescinded	27 Jul 1900
Discontinued	14 Feb 1901
Mail to Taylor	

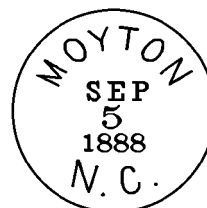


Type 1  
27 mm Black  
27 May 1897

### Moyton

(Wilson)

Francis M. Moye	23 Feb 1886
David Hill	5 Oct 1889
Jonathan H. Applewhite	19 Jul 1893
Marion M. Applewhite	15 Sep 1906
Discontinued	15 Nov 1906
Mail to Speight's Bridge, Greene County	



Type 1  
27 mm Black  
24 Nov 1886  
2 Jan 1896

### Neverson

(Wilson)

Shug Allen	10 Apr 1908
Discontinued	31 Aug 1911
Mail to Bailey, Nash County	

### Saratoga, moved from Edgecombe County

(Wilson)

Nathan Webb	1855
Ephraim D. Robbins	28 Feb 1859
Ephraim D. Robbins, CSA	date unknown
CSA office closed on or before	30 Apr 1865
Discontinued	11 Dec 1866
Newit D. Owens	10 Nov 1875
Discontinued	19 Apr 1877
Joshua L. Gay	21 Sep 1879
L. D. Shelton	22 Jun 1893
Joshua L. Gay	21 Jul 1897
Aurclius M. Moore	10 Aug 1901
John A. McKeel	15 Jan 1904
Discontinued	31 Aug 1910
Robert A. Gardner	17 Oct 1939
Bessie M. Gardner, Acting	27 Jan 1956



Type 1  
28 mm Black  
7 Jan 1898

# WILSON COUNTY

## Saratoga (Cont.)

(Wilson)

LaVohn R. Gardner	20 Jun 1957
LaVohn R. Lewis (surname changed)	
Gloria B. Parker Officer-In-Charge	28 Jun 1989
Barney M. Cook	16 Dec 1989
Samuel E. Flythe Officer-In-Charge	8 Jul 1993
Sherry A. Brown	4 Sep 1993
Tracy Thompson Officer-In-Charge	14 Jul 1995
Linwood Earl Peaden Jr.	11 Nov 1995
Amy Wells Officer-In-Charge	15 Oct 1997
Gloria B. Parker	9 May 1998
Patricia I. Phillips Officer-In-Charge	27 Nov 2000
Lowell Allen Smoot Officer-In-Charge	23 Mar 2001
Donna B. Kehoe	11 Aug 2001
Sue E. Brantley Officer-In-Charge	29 Mar 2003
Pat Phillips Officer-In-Charge	27 Jul 2004
Tammy K. Newsome	25 Dec 2004
Joyce Jackson Officer-In-Charge	11 Jul 2007
George Evans Officer-In-Charge	23 Jun 2008
Joyce Jackson Officer-In-Charge	4 Aug 2008
Samuel B. Benton	13 Sep 2008
Sharon Proctor Officer-In-Charge	26 Mar 2009
Converted to Remotely Managed Post Office of Stantonsburg.	23 Feb 2013



Type 2  
28.5 mm Black  
4 Sep 1900  
19 Oct 1904



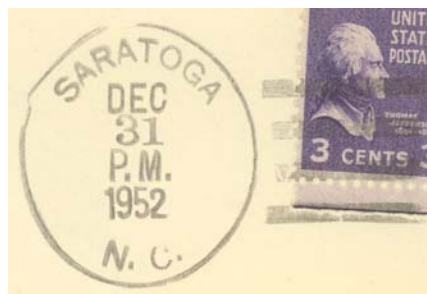
Type 3  
31 mm Black  
Doane Type 3-3  
29 Oct 1906  
14 Dec 1909



Type 4  
34 mm Black  
1936 Type F/1 4-Bar  
2 Mar 1943  
19 Sep 1946



Type 5  
35 mm Black  
Non-standard 4-Bar  
17 Apr 1950



Type 6  
33 mm Black  
1936 Type F/1 4-Bar  
31 Dec 1952  
15 Jun 1955

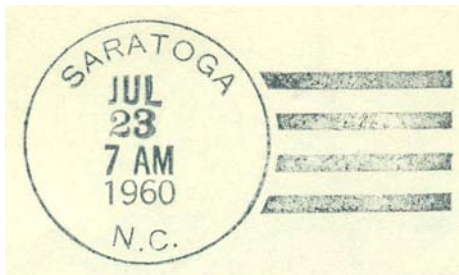
WILSON COUNTY

Saratoga (Cont.)

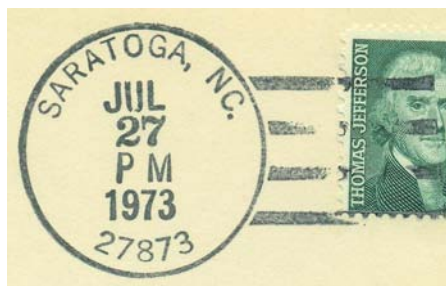
(Wilson)



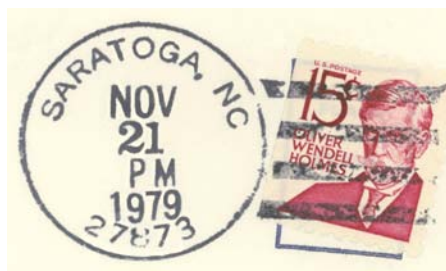
Type 7  
30 mm Magenta  
13 Mar 1956  
23 Jul 1960



Type 8  
32.5 mm Black  
1936 Type F/1 4-Bar  
20 Mar 1958  
23 Jul 1960



Type 9  
33 mm Black  
1963 Type F/2 4-Bar (27873)  
28 Sep 1965  
27 Jul 1973



Type 10  
32 mm Black  
1963 Type F/2 4-Bar (27873)  
21 Nov 1979



Type 11  
33.5 mm Black  
1963 Type F/2 4-Bar (27873)  
29 Sep 1989

WILSON COUNTY

Saratoga (Cont.)

(Wilson)



Type 12  
33 mm Black  
1963 Type F/2 4-Bar (27873)  
15 Jul 1991  
18 Jun 1992



Type 13  
31.5 mm Black  
Self-Inking Postmarker  
Type 1A (27873)  
9 May 1995  
3 Nov 1997



Type 14  
34.5 mm Red  
Self-Inking Postmarker (27873)  
22 Feb 2007



Type 15  
33.5 mm Black  
Self-Inking Postmarker  
(27873-9998)  
22 Feb 2007

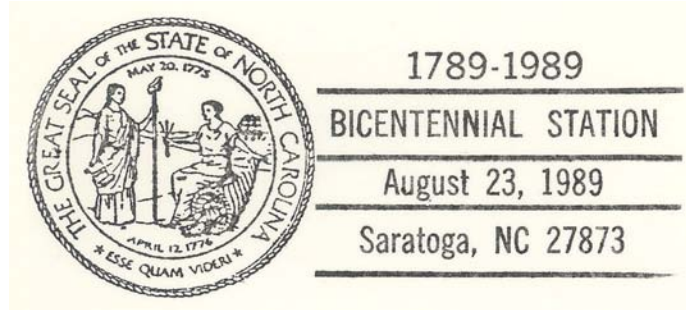
# WILSON COUNTY

## Saratoga (Cont.)

(Wilson)

### Temporary Station Cancels

#### Bicentennial Station

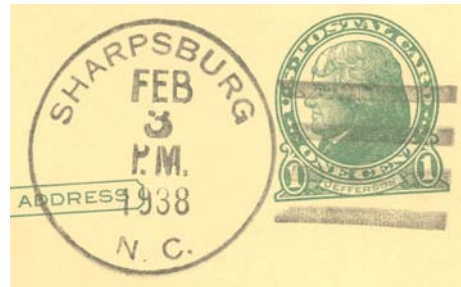


Type 1  
86.5 x 37 mm Black  
(27873)  
23 Aug 1989

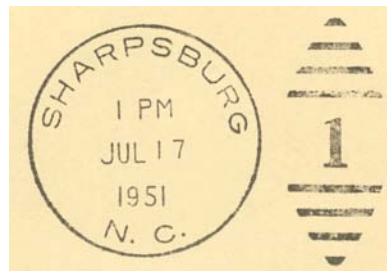
## Sharpsburg, moved from Nash County

(Wilson)

Mrs. Estell Eason	28 Jan 1937
Robert W. Sharpe, Acting	31 Jan 1955
Robert W. Sharpe	6 Sep 1957
J. R. Littleton Officer-In-Charge	1 Jun 1976
James A. Daughtridge Officer-In-Charge	9 Jul 1976
Ronald G. Warren	26 Feb 1977
Robert E. Rudd Officer-In-Charge	28 Aug 2000
Robert E. Rudd	10 Mar 2001
Carolyn D. McManus Officer-In-Charge	11 May 2006
Sue Brantley Officer-In-Charge	24 Jul 2006
Kelli Barlow Officer-In-Charge	15 Sep 2006
Jeanette R. Evans	23 Dec 2006



Type 1  
33 mm Black  
1936 Type F/1 4-Bar  
3 Feb 1938



Type 2  
30.5 mm Black  
Metal Duplex Type ?  
15 Jun 1951  
23 Jul 1952



Type 3  
34 mm Magenta  
1963 Type F/2 4-Bar (27878)  
11 Jan 1968

WILSON COUNTY

Sharpsburg (Cont.)

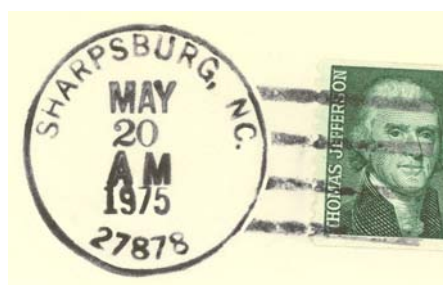
(Wilson)



Type 4  
32.5 mm Black  
1963 Type F/2 4-Bar (27878)  
4 Jun 1970  
12 Jan 1972



Type 5  
22.5 mm Black  
International Machine  
Type ATS/z 2724 (27878)  
14 Jan 1975  
21 Apr 1993



Type 6  
32.5 mm Black  
1963 Type F/2 4-Bar (27878)  
20 May 1975  
26 Feb 1976



Type 7  
33.5 mm Black  
1963 Type F/2 4-Bar (27878)  
24 Sep 1984  
10 Jul 1989



Type 8  
32.5 mm Black  
1963 Type F/2 4-Bar (27878)  
17 Jun 1992

## WILSON COUNTY

### Sharpsburg (Cont.)

(Wilson)



Type 9  
36 mm Black  
Self-Inking Postmarker (27878)  
12 Jan 1998



Type 10  
45.5 mm Magenta  
Self-Inking Postmarker (27878)  
7 Mar 2007

Rural Free Delivery

Type 8VD (1) Black?  
1905

### Sims

(Wilson)

Mark Peel	19 Jun 1908
Veanie Peel	7 Sep 1909
Veanie P. Sanders	30 Apr 1910
Christopher C. Peel	16 May 1912
Jennie I. Flowers	13 Sep 1919
James H. Flowers, Acting	15 May 1928
Louis F. Boykin	21 Mar 1929
James Dudley Boyette, Jr., Acting	1 Jul 1935
James Dudley Boyette, Jr.	11 Nov 1935
William H. Jones, Acting	16 Jul 1938
William H. Jones	17 Aug 1938
William H. Jones, Jr., Acting	23 Apr 1939
Cullen S. Nichols	18 Jul 1939
Mrs. Addie S. Winborne, Acting	7 Jul 1942
Mrs. Addie S. Winborne	13 Oct 1942
Mrs. Dolly F. Stallings Officer-In-Charge	31 Oct 1969
Mrs. Dolly F. Stallings	6 Feb 1971
Marsha W. Strawbridge Officer-In-Charge	31 Aug 1989



Type 1  
32.5 mm Black  
1910 Type B 4-Bar  
9 Jan 1912



# WILSON COUNTY

## Sims (Cont.)

(Wilson)

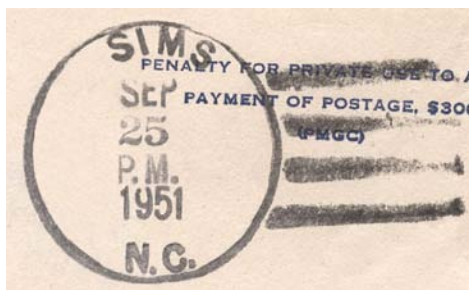
Susan M. Thomas Officer-In-Charge	30 Dec 1989
Timothy E. Hinton	10 Mar 1990
Charles S. Haynes Officer-In-Charge	25 Mar 1993
Barney M. Cook	10 Jul 1993
Stephen M. Burnette Officer-In-Charge	14 Mar 1996
Stephen M. Burnette	22 Jun 1996
Gloria B. Parker Officer-In-Charge	30 Dec 1997
Teresa A. Norwood	23 May 1998
Teresa A. Jones (surname changed)	11 Jun 1998
Peggy A. Ticconi Officer-In-Charge	6 Oct 2012
Converted to Level 6 (6-hour) Remotely Managed Post Office of Bailey. The postmaster position remained until ultimately vacated.	9 Mar 2013
Tiffany Hunt Officer-In-Charge	9 Mar 2013
Renee S. Daniels	1 Jun 2013



Type 2  
32 mm Black  
1910 Type B 4-Bar  
19 Mar 1920



Type 3  
34 mm Black  
1936 Type F/1 4-Bar  
5 May 1947  
12 Jun 1947



Type 4  
34.5 mm Black  
1936 Type F/1 4-Bar  
25 Sep 1951  
4 Oct 1952



Type 5  
33.5 mm Black  
1936 Type F/1 4-Bar  
14 Apr 1954  
8 Nov 1956

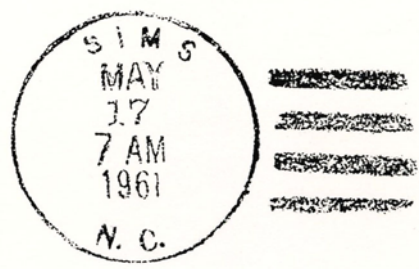


Type 6  
33.5 mm Black  
1936 Type F/1 4-Bar  
3 Oct 1959  
27 Oct 1964

WILSON COUNTY

Sims (Cont.)

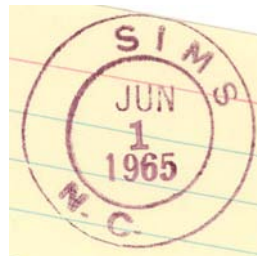
(Wilson)



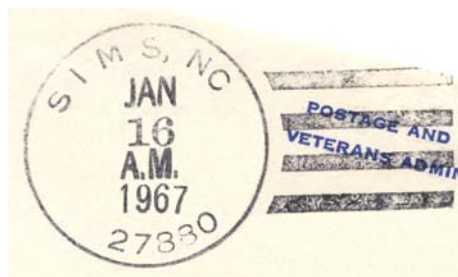
Type 7  
33 mm Black  
1936 Type F/1 4-Bar  
17 May 1961



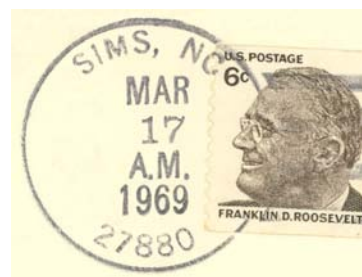
Type 8  
33.5 mm Black  
1963 Type F/2 4-Bar (27880)  
13 Mar 1965



Type 9  
30.5 mm Magenta  
1 Jun 1965



Type 10  
32.5 mm Black  
1963 Type F/2 4-Bar (27880)  
16 Jan 1967



Type 11  
33.5 mm Black  
1963 Type F/2 4-Bar (27880)  
17 Mar 1969

# WILSON COUNTY

Sims (Cont.)

(Wilson)



Type 12  
32.5 mm Black  
1963 Type F/2 4-Bar (27880)  
12 Nov 1970  
16 Jun 1980



Type 13  
33.5 mm Black  
1963 Type F/2 4-Bar (27880)  
2 Feb 1991  
12 Mar 1992



Type 14  
41.5 x 36 mm Red  
Self-Inking Postmarker (27880)  
19 Dec 2000



Type 15  
33.5 mm Red  
Self-Inking Postmarker (27880)  
13 Mar 2007

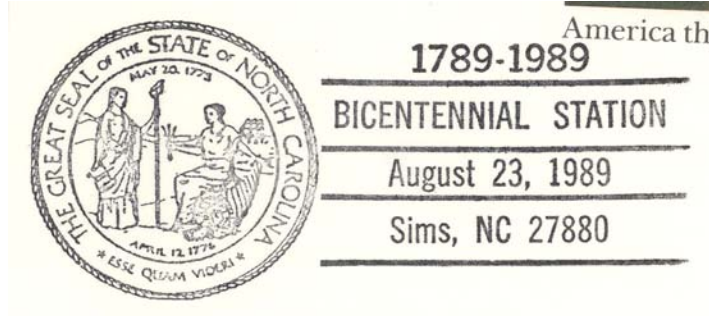
# WILSON COUNTY

## Sims (Cont.)

(Wilson)

### Temporary Station Cancels

Bicentennial Station

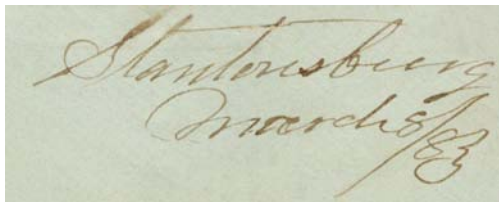


Type 1  
87.5 x 37 mm Black  
(27880)  
23 Aug 1989

## Stantonsburgh, Stantonsburg

(Wilson)

George W. Stanton	5 Apr 1870
Discontinued	12 Oct 1870
W. P. Dunn	1 Aug 1877
Wilkenson S. Dunn	16 Aug 1877
Benjamin J. Thompson	26 May 1884
Francis M. Moye	4 Aug 1885
Benjamin F. Thompson	23 Feb 1886
Henry B. Lane	26 Mar 1886



Manuscript  
8 Mar 1883

### Name changed to **Stantonsburg**

John C. Stanton	3 Feb 1892
da B. Thompson	25 Apr 1894
Discontinued	8 Aug 1896
Mail to Moyton	
Charles S. Whitley	29 Jan 1901
William L. Shelton	31 Jan 1907
John C. Stanton	14 Mar 1908
Simon S. Strother	10 Sep 1909
Romulus E. Beaman	14 Apr 1914
Lafayette C. Darden	23 Feb 1917
Charles S. Whitley	1 Oct 1917
Mrs. S. C. Williams, Acting	1 Jan 1920
Lillian D. Williams	20 Feb 1920
Simon S. Strother, Acting	16 May 1922
Simon D. Strother	10 Aug 1922
Alice Strother, Acting	26 Nov 1923
Annie L. Stanton	28 Apr 1924
Mrs. Bonnie B. Shingleton	20 Oct 1933
Foster Gray Rogers, Acting	27 Dec 1966
Foster Gray Rogers	25 Aug 1967
Nancy A. Pisarik Officer-In-Charge	29 Nov 1990
Mary Ann Radford	6 Apr 1991
Delphine B. Thompson Officer-In-Charge	30 Jun 2006
Delphine B. Thompson	9 Jun 2007
Heather D. Trexler	17 Jul 2021



Type 1  
28 mm Black  
22 Sep 1892



Type 2  
31.5 mm Black  
1908 Type A/2 4-Bar  
21 Mar 1911



Type 3  
30.5 mm Black  
Metal Duplex Type H2  
12 Dec 1914  
22 Nov 1921

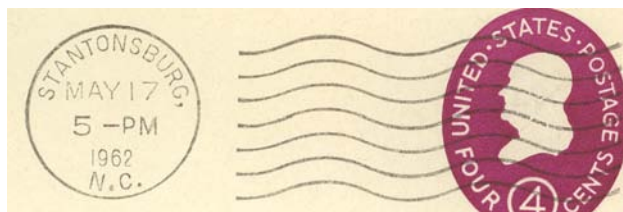
## WILSON COUNTY

Stantonsburgh, Stantonsburg (Cont.)

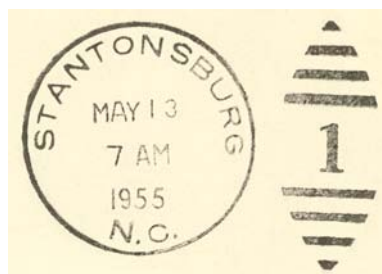
(Wilson)



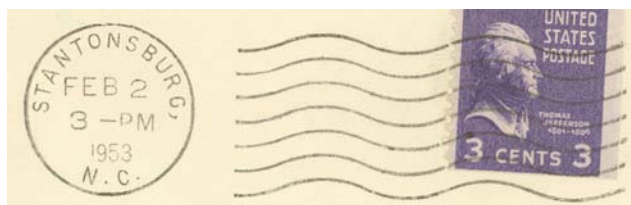
Type 4  
29.5 mm Black  
Metal Duplex Type H2  
22 Dec 1938  
1 Mar 1950



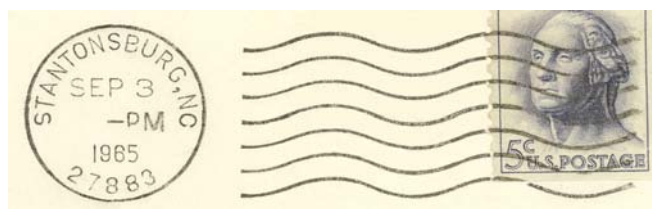
Type 5  
23 mm Black  
International Machine  
Type AT/S 2721  
10 Jun 1943  
15 Dec 1964



Type 6  
30.5 mm Black  
Metal Duplex Type ?  
15 Jun 1951  
13 May 1955



Type 7  
22.5 mm Black  
International Machine  
Type AT/S 2721  
(Wide "N.C.")  
2 Feb 1953  
15 Jun 1960

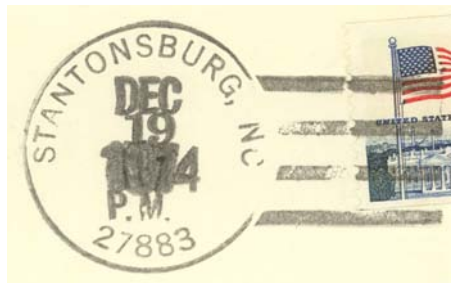


Type 8  
23.5 mm Black  
International Machine  
Type ATS/z 2721 (27883)  
3 Sep 1965  
6 Apr 1993

# WILSON COUNTY

## Stantonsburgh, Stantonsburg (Cont.)

(Wilson)



Type 9  
33 mm Black  
1963 Type F/2 4-Bar (27883)  
19 Dec 1974



Type 10  
33 mm Black  
1963 Type F/2 4-Bar (27883)  
7 Jan 1997  
8 Mar 2007



Type 11  
29.5 mm Red  
Self-Inking Postmarker (27883)  
7 Jan 1997



Type 12  
29.5 mm Red  
Self-Inking Postmarker (27883)  
8 Mar 2007

## Sun

(Wilson)

Leonidas P. Woodard      10 Feb 1898  
Discontinued              31 Jan 1905  
Mail to Wilson

## WILSON COUNTY

### Talbot

(Wilson)

Joseph S. Wilson	21 Mar 1892
Safrona M. Wilson	27 Aug 1892
William Winborn	28 Jun 1895
Joseph S. Wilson	3 Feb 1898
Gaston Nichols (not commissioned)	19 Sep 1900
L. H. Bissett (declined)	6 Mar 1901
B. E. Flowers	14 Jun 1901
Order rescinded	19 Jul 1901
Joseph S. Wilson	3 Feb 1898
Sallie Parker	20 Nov 1901
Hattie Bass	1 Feb 1902
Discontinued	15 Oct 1902
Mail to Cefare	

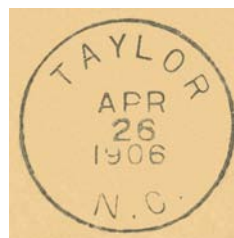
### Taylor

(Wilson)

M. Ida Taylor	29 Mar 1882
Marion J. Willoughby	3 Dec 1883
Discontinued	8 Jan 1885
Mail to Meeksville	
James W. Barnes	3 Mar 1885
James Todd	6 Aug 1902
Order rescinded	25 Oct 1902
James W. Barnes	3 Mar 1885
Discontinued	31 Mar 1914
Mail to Wilson	



Type 1  
27 mm Black  
24 Mar 188x



Type 2  
28.5 mm Black  
26 Apr 1906



Type 3  
31.5 mm Black  
1906 Type A/1 4-Bar  
9 Oct 1907  
18 Nov 1908

## WILSON COUNTY

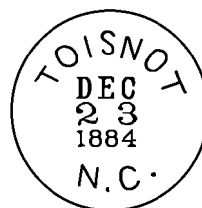
### Toisnot, name changed from Joyner's Depot

(Wilson)

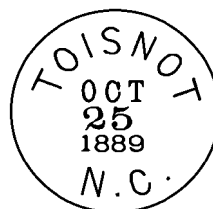
George W. Griffin	29 Sep 1873
Theophilus T. Winstead	3 Aug 1885
George H. Griffin	13 Jul 1889
Name changed to <b>Elm City</b>	20 Mar 1891



Type 1  
24.5 mm Black  
14 Jan 187x  
12 May 187x

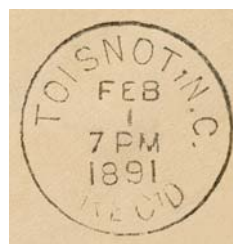


Type 2  
26 mm Black  
11 Jul 1881  
23 Dec 1884



Type 3  
27.5 mm Black  
11 May 1887  
25 Oct 1889

Receiving datestamp



Type R1  
28 mm Black  
1 Feb 1891

### Westover

(Wilson)

John M. Stephenson	16 Mar 1900
Discontinued	15 Dec 1900
Mail to Elm City	



## WILSON COUNTY

### Wilbanks, name changed from Bridgersville

(Wilson)

William D. P. Sharp	7 May 1895
James T. Winstead	26 Dec 1899
William B. Forbes	16 Feb 1905
Discontinued	29 Sep 1906
Mail to Elm City	

### Wilson C.H., Wilson, moved from Edgecombe County

(Wilson)

Edwin G. Clark	13 Feb 1855
Edwin G. Clark, CSA	2 Aug 1861
CSA office closed on or before	30 Apr 1865
William G. Sharpe	24 Jun 1865
T. C. Davis	11 Jan 1866
Mrs. Matilda J. Selby	13 Feb 1866
Mrs. Mary C. Daniels	6 Dec 1866
Virginia Sharpe	9 Mar 1883
William M. Gay	6 Aug 1885
Samuel H. Vick	28 Sep 1889
Edwin Barnes	16 Feb 1894
William S. Harriss	1 Mar 1897
Samuel H. Vick	24 May 1898
Benjamin T. Person	24 Mar 1903
Samuel W. Smith	2 Jun 1914
John H. Griffin	30 Mar 1920
George W. Stanton	7 Apr 1924
Joseph W. Robbins, Acting	20 Feb 1933
John R. Dildy, Acting	1 May 1933
John R. Dildy	18 Jun 1935
Garry T. Fulghum, Acting	16 Feb 1938
Garry T. Fulghum	12 Jul 1939
Julius C. Vogt, Acting	31 May 1954
Wilbur H. Owens, Acting	13 Jan 1961
Bruce N. Conyers	20 Sep 1962
Kirby C. Owens Officer-In-Charge	20 Dec 1972
Billy B. Poole	5 Jan 1974
Carl P. Riddle Officer-In-Charge	30 Dec 1983
Henry G. Dunn Jr.	17 Mar 1984
Robert L. McClain Officer-In-Charge	28 Sep 1988
F. Tom Southerland	14 Jan 1989
Bobbie Sue Fretwell Officer-In-Charge	2 Jan 2002
L. G. Lamm Officer-In-Charge	16 Aug 2002
Nela P. Horton Officer-In-Charge	3 Jan 2003
Nela P. Horton	8 Mar 2003
William P. Pulley III Officer-In-Charge	13 Nov 2003
Larry Dean Fields Officer-In-Charge	22 Nov 2003
Ellen Carol Langston Officer-In-Charge	11 May 2004
Jerome Walters Officer-In-Charge	15 Dec 2004
Jerome Walters	2 Apr 2005
William Loyd Jr. Officer-In-Charge	31 Jul 2006
William Loyd Jr.	9 Dec 2006

*Wilson  
June 10*

Manuscript  
10 Jun 185x



Type 1  
30.5 mm Black  
1857  
1861

Confederate



Type 1  
30.5 mm Black  
3 Jul 1863  
21 Sep 1864

Reconstruction



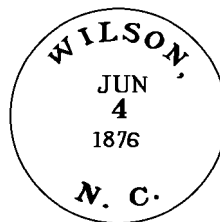
Type 2  
25 mm Black  
13 May 1869  
8 Feb 1870

# WILSON COUNTY

## Wilson C.H., Wilson (Cont.)

(Wilson)

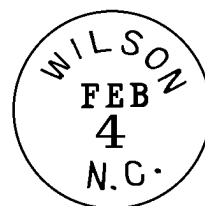
Alisa G. Bassa Officer-In-Charge	22 Jan 2009
Alisa G. Bassa	5 Jun 2010
Beverly Marriott Officer-In-Charge	19 May 2011
Julius L. Jones Officer-In-Charge	12 Oct 2011
Milton C. Adcock	4 May 2013
Matthew A. Staley	9 Jan 2016
Michael R. Amory	6 Jul 2019
Trecia V. Caleb	18 Jun 2022



Type 3  
28.5 mm Magenta  
4 Jun 1876  
2 Jul 1879



Type 4  
30.5 mm Violet  
23 Sep 1879  
29 Mar 1881



Type 5  
26.5 mm Black  
4 Feb 188x  
14 Jul 1881



Type 6  
27 mm Black  
24 Sep 1880  
19 Nov 1883



Type 7  
27.5 mm Black  
26 Oct 1885  
3 Jun 1890

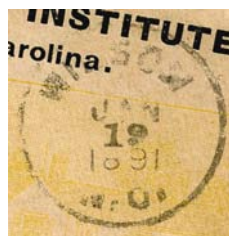


Type 8  
27.5 mm Black  
24 Nov 1886  
25 Dec 1890

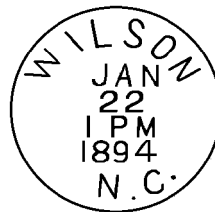
# WILSON COUNTY

Wilson C.H., Wilson (Cont.)

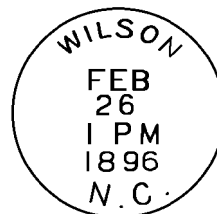
(Wilson)



Type 9  
27 mm Black  
19 Jan 1891  
6 Jun 1891



Type 10  
28 mm Black  
27 Sep 1891  
12 Feb 1894



Type 11  
28 mm Black  
23 Jul 1895  
26 May 1898



Type 12  
28.5 mm Black  
Metal Duplex Type H2  
31 May 1899  
3 May 1901



Type 13  
26 mm Black  
Metal Duplex Type E2  
(Numeral 1)  
31 Aug 1903  
17 Feb 1905

# WILSON COUNTY

Wilson C.H., Wilson (Cont.)

(Wilson)

RETURN TO WRITER.



Type 14  
25.5 mm Black  
Metal Duplex Type E2  
(Numeral 2)  
16 Mar 1906  
20 Nov 1920



Type 15  
20.5 mm Black  
International Machine  
Type DT 34(1)  
18 Nov 1907  
7 Nov 1916



Type 16  
22.5 mm Black  
American Machine  
Type A14  
1917  
22 Feb 1918



Type 17  
21 mm Black  
Universal Machine  
Type DT 300  
24 Oct 1918  
2 Oct 1922



Type 18  
21 mm Black  
Universal Machine  
Type DT 600  
15 Jan 1932  
23 Dec 1934



Type 19  
31 mm Black  
Metal Duplex Type E2  
22 Jul 1936  
12 Oct 1937

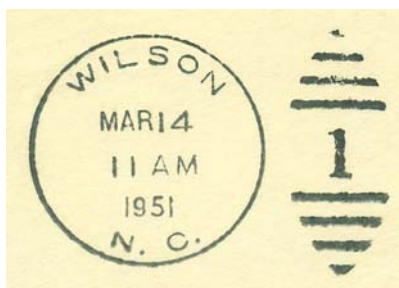
## WILSON COUNTY

Wilson C.H., Wilson (Cont.)

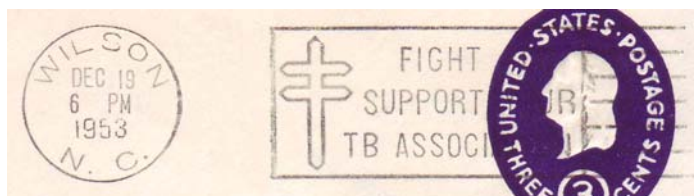
(Wilson)



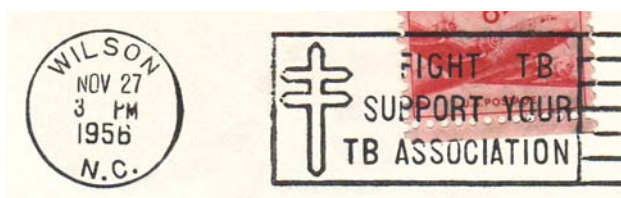
Type 20  
 21 mm Black  
 Universal Machine  
 Type DT 300  
 (Wide "N.C.")  
 19 May 1938  
 18 Oct 1956



Type 21  
 30.5 mm Black  
 Metal Duplex Type ?  
 4 Dec 1942  
 14 Mar 1951



Type 22  
 21 mm Black  
 Universal Machine  
 Type DT 400  
 (Fight TB/Support Your/TB Association)  
 19 Dec 1953  
 15 Nov 1956



Type 23  
 21 mm Black  
 Universal Machine  
 Type DT 400 (Small "N.C.")  
 (Fight TB/Support Your/TB Association)  
 27 Nov 1956  
 3 Dec 1958



Type 24  
 20.5 mm Black  
 Universal Machine  
 Type DT 300  
 (Small "N.C.")  
 30 Jan 1957  
 4 Jun 1958

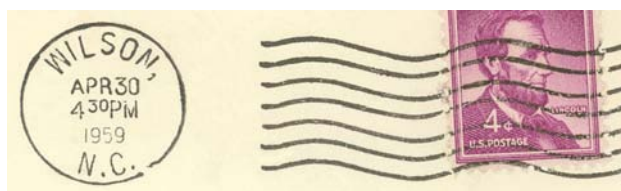
# WILSON COUNTY

Wilson C.H., Wilson (Cont.)

(Wilson)



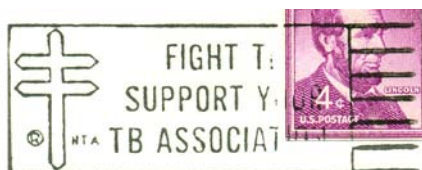
Type 25  
20.5 mm Black  
Universal Machine  
Type DT 400 (Small "N.C.")  
(Pray/For/Peace)  
12 Jul 1958  
24 Aug 1961



Type 26  
21.5 mm Black  
International Machine  
Type J30  
30 Apr 1959  
14 Aug 1962



Type 27  
35.5 mm Black  
15 Aug 1958  
12 Jul 1964



Type 28  
21.5 mm Black  
International Machine  
Type J400  
(Fight TB/Support Your/TB Association)  
1 Dec 1960  
20 Dec 1965



Type 29  
21.5 mm Black  
International Machine  
Type J400  
(Support Your/Mental Health/Association)  
23 May 1962  
8 May 1965



Type 30  
21.5 mm Black  
International Machine  
Type J400  
(Give/The/United/Way)  
13 Oct 1963  
9 Oct 1964

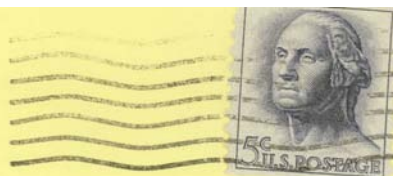
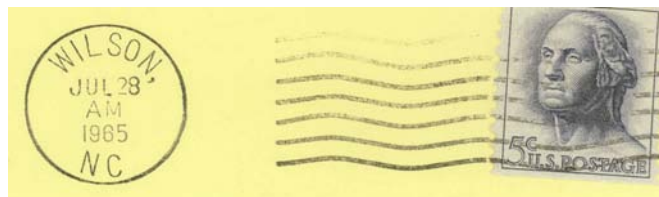
# WILSON COUNTY

Wilson C.H., Wilson (Cont.)

(Wilson)



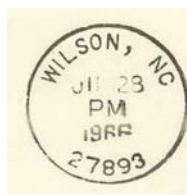
Type 31  
21.5 mm Black  
International Machine  
Type J400  
(Support Your/Mental Health/Association)  
(No stops after "N C")  
17 May 1965  
11 Jun 1968



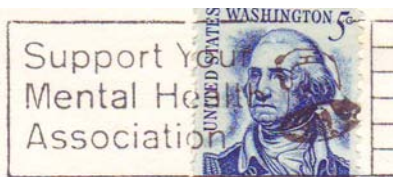
Type 32  
21 mm Black  
International Machine  
Type J30  
(No stops after "N C")  
28 Jul 1965  
11 Jan 1968



Type 33  
21.5 mm Black  
International Machine  
Type J400  
(Give/The/United/Way)  
(No stops after "N C")  
1 Oct 1965



Type 34  
20.5 mm Black  
International Machine  
Type Hz30 (27893)  
21 Apr 1966  
24 Apr 1968



Type 35  
21.5 mm Black  
International Machine  
Type Hz400 (27893)  
(Support Your/Mental Health/Association)  
4 May 1966  
21 May 1968

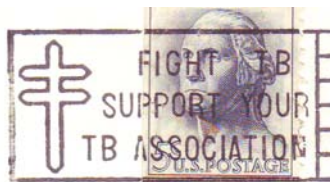


Type 36  
21.5 mm Black  
International Machine  
Type Hz400 (27893)  
(Give/The/United/Way)  
7 Sep 1966  
7 Oct 1967

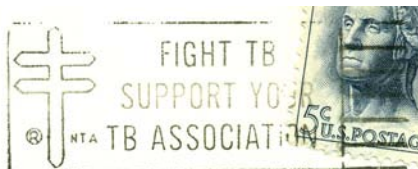
# WILSON COUNTY

Wilson C.H., Wilson (Cont.)

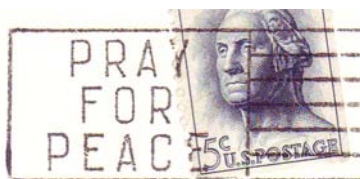
(Wilson)



Type 37  
 21 mm Black  
 Universal Machine  
 Type DT 400 (27893)  
 (Fight TB/Support Your/  
 TB Association)  
 29 Sep 1966  
 14 Dec 1967



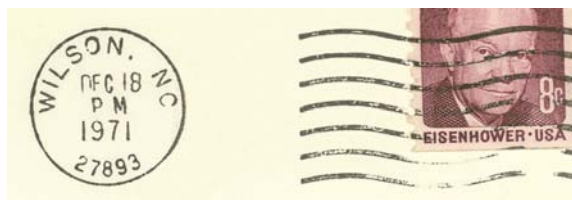
Type 38  
 21.5 mm Black  
 International Machine  
 Type Hz400 (27893)  
 (Fight TB/Support Your/  
 TB Association)  
 28 Dec 1966  
 1 Dec 1967



Type 39  
 20.5 mm Black  
 Universal Machine  
 Type DTS/z 400 (27893)  
 (Pray/For/Peace)  
 4 Jun 1967  
 5 Dec 1967



Type 40  
 32.5 mm Black  
 Hanley hand-held roller  
 (27893)  
 Jan 1968



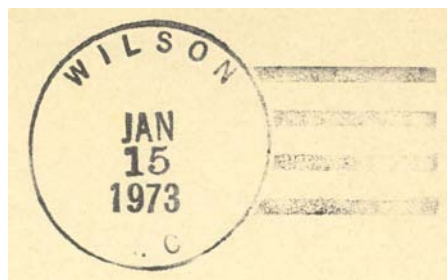
Type 41  
 20.5 mm Black  
 Universal Machine  
 Type DT S/z 200 (27893)  
 2 Feb 1969  
 1 Apr 1972



# WILSON COUNTY

Wilson C.H., Wilson (Cont.)

(Wilson)



Type 42  
32.5 mm Black  
1936 Type F/1 4-Bar  
15 Jan 1973



Type 43  
32 mm Black  
1963 Type F/2 4-Bar (27893)  
31 Aug 1977



Type 44  
20.5 mm Black  
Universal Machine  
Type DT S/z 400 (27893)  
(Give/The United Way)  
21 Sep 1984  
29 Oct 1985



Type 45  
29 mm Magenta  
15 Nov 1985



Type 46  
33 mm Black  
1963 Type F/2 4-Bar (27893)  
25 May 2000

## WILSON COUNTY

### Wilson C.H., Wilson (Cont.)

(Wilson)

#### Station Cancels

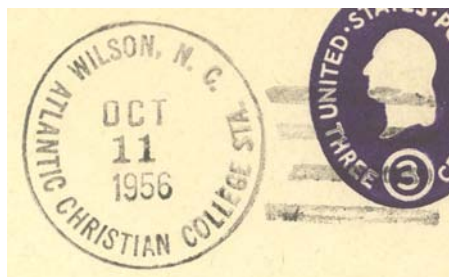
Atlantic Christian College Station

9 Dec 1940

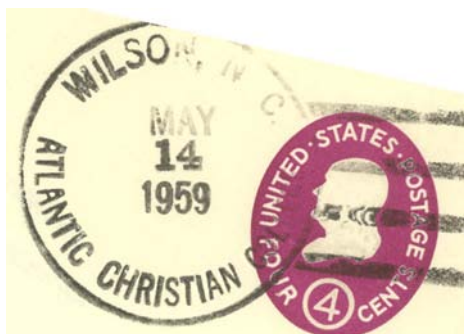
6 Sep 1990 (Name changed to Barton College)



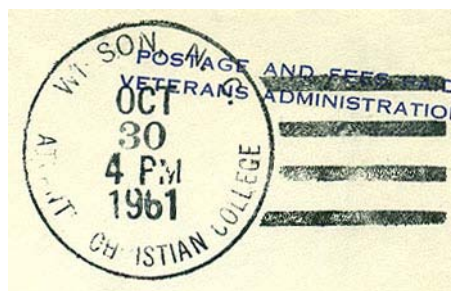
Type 1  
29 mm Black  
4-Bar Mimic  
3 Nov 1948  
14 Jun 1954



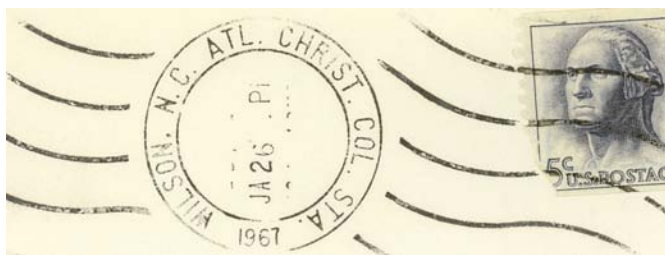
Type 2  
32.5 mm Black  
1936 Type F/1 4-Bar  
14 Jun 1955  
11 Oct 1956



Type 3  
38-40 mm Black  
Non-standard 4-Bar  
10 Jul 1958  
14 May 1959



Type 4  
33.5 mm Black  
1936 Type F/1 4-Bar  
30 Oct 1961



Type 5  
31.5 mm Black  
Hanley hand-held roller  
1 Nov 1966  
26 Jan 1967

# WILSON COUNTY

## Wilson C.H., Wilson (Cont.)

(Wilson)

### Station Cancels (Cont.)

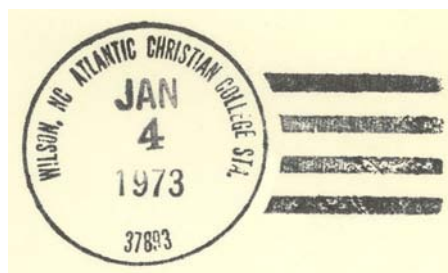
#### Atlantic Christian College Station (Cont.)



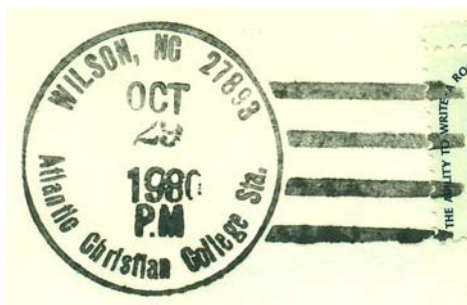
Type 6  
31.4 mm Black  
(27893)  
3 Aug 1970  
28 Mar 1972



Type 7  
30.5 mm Magenta  
6 Jul 1972  
4 Jan 1973



Type 8  
32.5 mm Black  
1963 Type F/2 4-Bar (37893)  
(Incorrect ZIP) number  
4 Jan 1973



Type 9  
35.5 mm Black  
Non-standard 4-Bar (27893)  
29 Oct 1980  
20 Jan 1981



Type 10  
34.5 mm Black  
1963 Type F/2 4-Bar (27893)  
21 Oct 1986  
24 Apr 1989

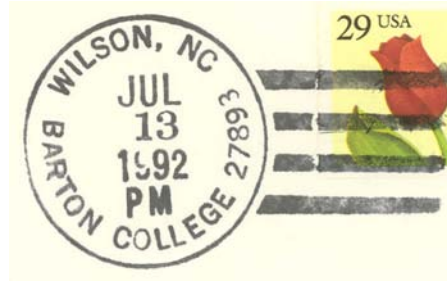
# WILSON COUNTY

## Wilson C.H., Wilson (Cont.)

(Wilson)

### Station Cancels (Cont.)

Barton College Station  
6 Sep 1990



Type 1  
33 mm Black  
1963 Type F/2 4-Bar (27893)  
30 Mar 1992  
10 May 1996



Type 2  
31 mm Red  
Self-Inking Postmarker (27893)  
31 Aug 2006

Brentwood Station  
?



Type 1  
29.5 mm Magenta  
13 Jul 1992  
15 Jul 1996



Type 2  
31 mm Black  
Self-Inking Postmarker  
8 Sep 2006

# WILSON COUNTY

## Wilson C.H., Wilson (Cont.)

(Wilson)

### Station Cancels (Cont.)

Main Office Station

?  
?



Type 1  
36.5 mm Black  
Self-Inking Postmarker  
2 Apr 2007

Parkwood Station

6 Oct 1979 Name changed from South

Wilson Station

?



Type 1  
28 mm Magenta  
29 Jan 1980  
25 Feb 1988



Type 2  
29.5 mm Magenta  
8 Sep 1993



Type 3  
32.5 mm Black  
21 Dec 2000



Type 4  
36.5 mm Black  
Self-Inking Postmarker  
31 Jan 2007

# WILSON COUNTY

## Wilson C.H., Wilson (Cont.)

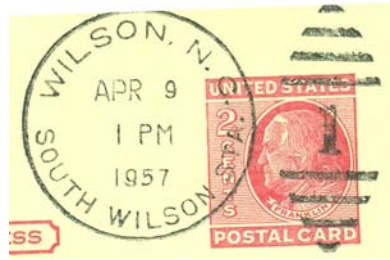
(Wilson)

### Station Cancels (Cont.)

South Wilson Station

1 Nov 1954

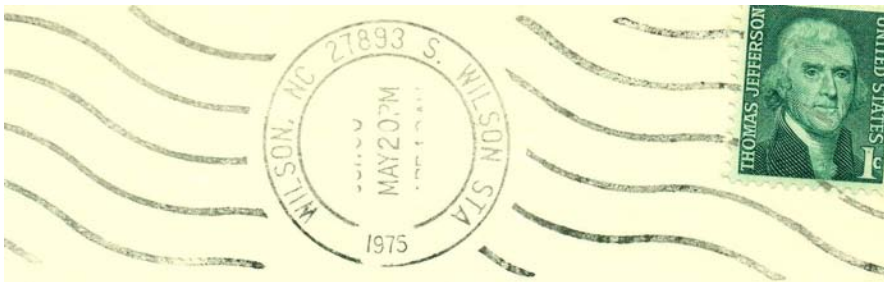
6 Oct 1979 Name changed to Parkwood Station



Type 1  
31 mm Black  
Metal Duplex Type ?  
9 Apr 1957



Type 2  
30.5 mm Magenta  
9 Apr 1957  
24 Nov 1978

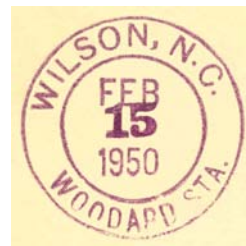


Type 3  
32.5 mm Black  
Hanley hand-held roller  
(27893)  
30 Dec 1970  
20 May 1975

Woodard Station

1 May 1949

?



Type 1  
29.5 mm Magenta  
15 Feb 1950



Type 2  
31 mm Black  
Metal Duplex Type ?  
15 Apr 1950  
19 Jan 1954

# WILSON COUNTY

## Wilson C.H., Wilson (Cont.)

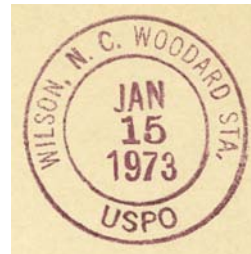
(Wilson)

Station Cancels (Cont.)

Woodard Station (Cont.)



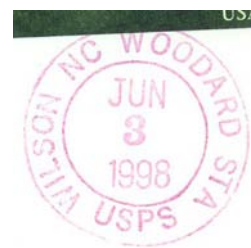
Type 3  
31 mm Magenta  
8 Mar 1967



Type 4  
30 mm Magenta  
15 Jan 1973



Type 5  
29.5 mm Magenta  
18 Oct 1983  
18 Sep 1984



Type 6  
29.5 mm Magenta  
3 Jun 1998



Type 7  
30.5 mm Black  
Self-Inking Postmarker  
2 Apr 2007

# WILSON COUNTY

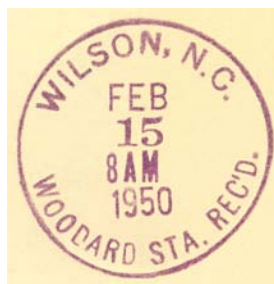
Wilson C.H., Wilson (Cont.)

(Wilson)

Station Cancels (Cont.)

Woodard Station (Cont.)

Receiving datestamp



Type R1  
34 mm Magenta  
15 Feb 1950

Rural Station Cancels

Encas Rural Station

Jan 1944

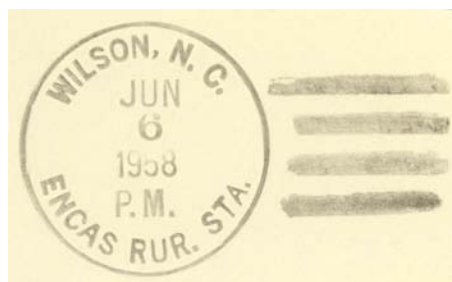
>3 Jan 1973



Type 1  
34 mm Black  
1936 Type F/1 4-Bar  
26 Jun 1947



Type 2  
30.5 mm Magenta  
27 Jun 1947



Type 3  
33.5 mm Black  
1936 Type F/1 4-Bar  
26 Jun 1947  
6 Jun 1958



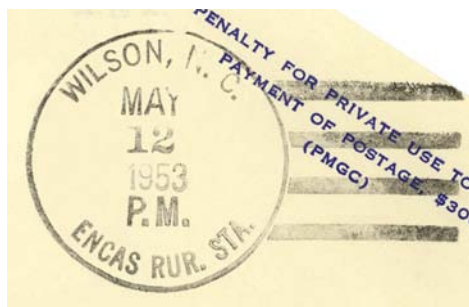
# WILSON COUNTY

## Wilson C.H., Wilson (Cont.)

(Wilson)

### Rural Station Cancels (Cont.)

#### Encas Rural Station (Cont.)



Type 4  
34.5 mm Black  
1936 Type F/1 4-Bar  
12 Mar 1953  
8 Nov 1961



Type 5  
32.5 mm Black  
Hanley hand-held roller  
29 May 1967  
20 Oct 1962



Type 6  
30.5 mm Magenta  
3 Jan 1968



Type 7  
33.5 mm Black  
1963 Type F/2 4-Bar (27893)  
27 May 1970



Type 8  
30 mm Magenta  
28 May 1970  
30 mm Red  
6 Jan 1973

WILSON COUNTY

Wilson C.H., Wilson (Cont.)

(Wilson)

Rural Station Cancels (Cont.)

Five Points Rural Station

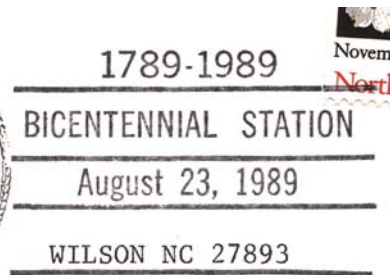
1 Dec 1937  
15 May 1939



Type 1  
33 mm Black  
1936 Type F/1 4-Bar  
1 Dec 1938  
14 Dec 1938

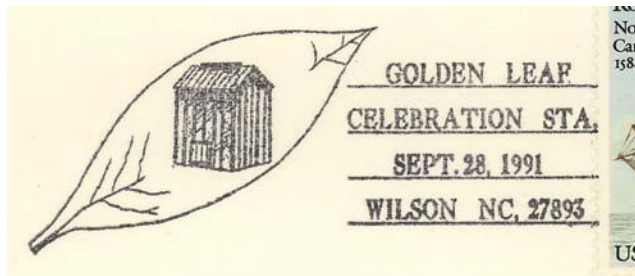
Temporary Station Cancels

Bicentennial Station



Type 1  
86 x 37.5 mm Black  
(Post office name typed in)  
(27893)  
23 Aug 1989

Golden Leaf Celebration Station



Type 1  
75.5 x 30 mm Black  
(27893)  
28 Sep 1991

Receiving datestamp



Type 1  
29.5 mm Black  
24 Jan 1901

WILSON COUNTY

Wilson C.H., Wilson (Cont.)

(Wilson)

Receiving datestamp (Cont.)



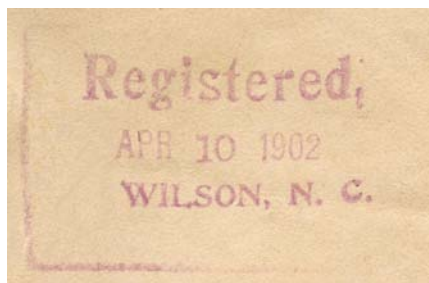
Type 2  
30.5 mm Black  
3 Mar 1906  
26 May 1906

Rural Free Delivery



Type 11 (2) Purple pencil  
(Town, date and RFD)  
8 Apr 1907

Registered



Type 1  
50 x 32 mm Magenta  
17 Aug 1900  
10 Apr 1902



Type 2  
55 x 33.5 mm Red  
20 Oct 1904