

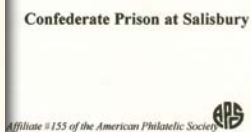
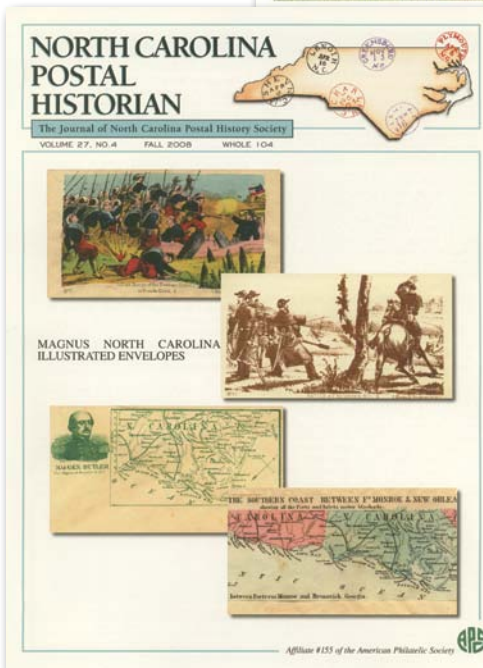
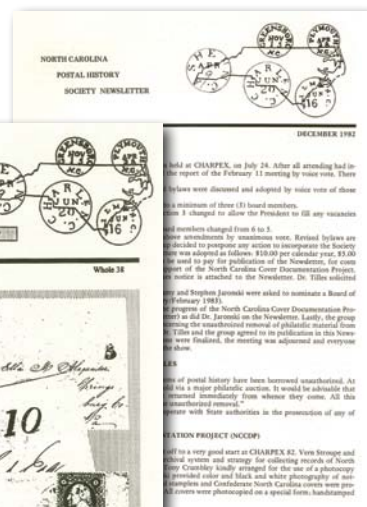
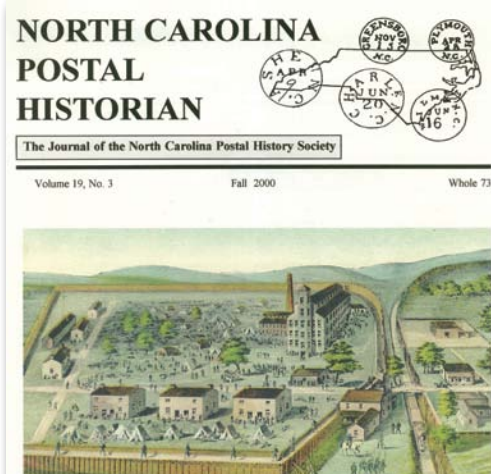
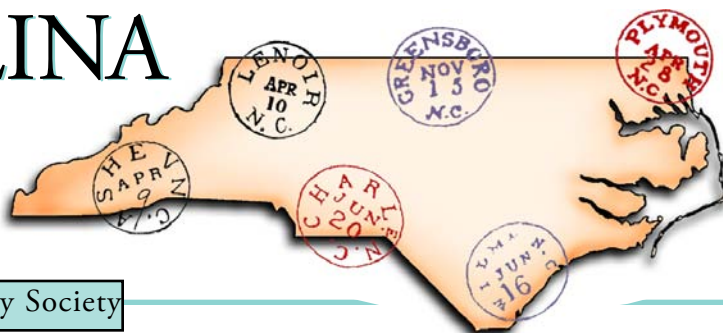
# NORTH CAROLINA POSTAL HISTORIAN

The Journal of North Carolina Postal History Society

VOLUME 29, NO. 1 SUPPLEMENT

WINTER 2009-2010

WHOLE 109 SUPPLEMENT



Special Supplement

Author and Subject Indexes of the North  
Carolina Postal History Society Journal  
By Maurice M. Bursey

Affiliate #155 of the American Philatelic Society



---

---

---

## Author Index

By Maurice M. Bursey

*North Carolina Postal History Society Newsletter* (Issues 1 - 15)  
*NCPHS Newsletter* (Issues 16 - 49 , Volume 5, No. 1 - Volume 13, No. 2)  
*North Carolina Postal Historian* (Issues 50 - present, Volume 13, No. 3 - present)

This Author Index is in alphabetical order. It includes exact titles of the works as printed in the journal, with an explanatory note in brackets if the title does not indicate the subject sufficiently. When the article has been reprinted from another source, the original source is identified. Announcements, auction results, and minutes are omitted from the indexes.

Citations consist of volume number and issue number. Until 1986, issues were numbered consecutively, without a volume number. Beginning with 1986, volume numbers were added, the volume for 1986 being designated as Volume 5, and the preceding issues were designated Volumes 1 to 4 according to year. Beginning with Volume 5, there are four numbers per year, except for the following:

Vol. 8, 1984	3 numbers	winter, summer, fall
Vol. 11, 1991-92	5 numbers	winter, spring, summer, fall, winter
Vol. 13, 1994	3 numbers	spring, summer, fall
Vol. 18, 1999	3 numbers	summer, fall, winter
Vol. 19, 2000	3 numbers	spring, summer, fall
Vol. 23, 2004	3 numbers	spring, summer, fall

There were several errors in numbering or dating certain issues when they were printed.

Designation in original issue	Corrected designation used here
No. 8 (Vol. 3, No. 1) Feb. 1984	No. 7 (Vol. 3, No. 1) Feb. 1984*
Vol. 9, No. 2, Spring 1991	Vol. 10, No. 2, Spring 1991*
Vol. 10, No. 2, Summer 1991	Vol. 10, No. 3, Summer 1991*
Vol. 11, No. 3, Fall 1992	Vol. 11, No. 4, Fall 1992*
Vol. 11, No. 4, Winter 1992	Vol. 11, No. 5, Winter 1992*
Vol. 12, No. 4, Summer 1993	Vol. 12, No. 4, Fall 1993*
Vol. 25, No. 2, Summer 2006	Vol. 25, No. 3, Summer 2006*

\*In the indexes, asterisks are used after references to these issues.

Vol. 11, No. 1, Winter 1992, is an accompaniment to *North Carolina Post Offices and Postmasters 1860-1866*, distributed to members. Vol. 13, No. 1, is a letter of 10 April 1994 from Tony L. Crumbley, Editor, to Booksellers, announcing *Postal Markings of North Carolina Railroads*. Vol. 28, No. 1, Winter 2008, has an inserted one-sheet addendum.

### **Acce, Marshall**

Who's Who in the NCPHS [Dr. Harvey G. Tilles, biographical sketch]	Vol. 26, No. 1, Winter 2006-07: 3
Who's Who in the NCPHS [Stefan T. Jaronski, biographical sketch]	Vol. 26, No. 2, Spring 2007: 3, 14
Who's Who in the NCPHS [Phillip Perkinson, biographical sketch]	Vol. 26, No. 3, Summer 2007: 3, 16
Who's Who in the NCPHS [Jerry R. Roughton, biographical sketch]	Vol. 26, No. 4, Fall 2007: 3
Who's Who in the NCPHS [Tony L. Crumbley, biographical sketch]	Vol. 27, No. 1, Winter 2008: 3, 16

### **Allen, John**

Meet Founding Member John Allen	Vol. 28, No. 2, Spring 2009: 3
---------------------------------	--------------------------------

### **Arthur, Billy**

Father of Rural Mail Service [John Steele Henderson, from <i>Our State</i> , March 1997: 14-15]	Vol. 16, No. 2, Summer 1997: 3-4
--	----------------------------------

---

<b>Baum, Larry</b>	
Confederate Advertising Census of NC	Vol. 26, No. 2, Spring 2006: 4-11
<b>Bokoski, Dudley</b>	
166 Years of the Madison Post Office	Vol. 6, No. 1, Winter 1987: 3-10
<b>Bolden, Don</b>	
Company Shops, Burlington Had a Third Name [from the <i>Burlington Times-News</i> , Sept. 1, 1993]	Vol. 13, No. 4, Fall 1994: 8-9
<b>Boubelik, Charles, Compiler</b>	
North Carolina Post Offices Opened during the Doane Period	Vol. 11, No. 2, Spring 1992: 8-10
<b>Brown, Throop C.</b>	
Snow Camp Doesn't Exist in Cyberspace	Vol. 24, No. 3, Summer 2005: 14
Who Says Mail Delivery Has Improved over Time? [Siler City to Snow Camp in 1893 and 2004]	Vol. 24, No. 3, Summer 2005: 15
<b>Bursey, Maurice M.</b>	
Benjamin Sherwood Hedrick: the Man behind the Covers	Vol. 27, No. 3, Summer 2008: 4-10
Covers from Union Soldiers in North Carolina during the Civil War	Vol. 27, No. 2, Spring 2008: 4-15
Magnus Illustrated Envelopes Related to North Carolina	Vol. 27, No. 4, Fall 2008: 3-10
Mendenhall and Shumaker, Raleigh Cachet Creators of The Early 1930s	Vol. 28, No. 4, Fall 2009: 8-11
Patriotic Confederate Envelopes and Covers from North Carolina, W. & J. Bonitz Envelopes from Goldsboro	Vol. 28, No. 1, Winter 2009: 3-8, Addendum
Patriotic Confederate Envelopes and Covers from North Carolina, Part 2. "Whitaker, Wilmington"	Vol. 28, No. 2, Spring 2009: 4-8
Patriotic Confederate Envelopes and Covers from North Carolina, Part 3. "Lowenburg & Bro., Beaufort, N.C."	Vol. 28, No. 2, Spring 2009: 11-14
<b>Bush, Conrad L.</b>	
Pair of Historical North Carolina Letters, A [Statesville, Apr. 10, Apr. 27, 1865]	Vol. 7, No. 3, Summer 1988: 8-9
<b>Cohn, Ernst M.</b>	
Confederate Mails in North Carolina [from <i>Postal History Journal</i> , No. 82, June 1989; a review of Ridgway, Richard F., <i>Self-Sufficiency at All Costs: Confederate Post Office Operations in North Carolina, 1861-65</i> ]	Vol. 8, No. 2, Summer 1989: 4
<b>Corbitt, David L.</b>	
Bids for Carrying the United States Mails [from the <i>North Carolina Historical Review</i> , Vol. 8, No. 2, 1931: 207-212]	Vol. 10, No. 2, Spring 1991: 3-5
<b>Crosby, Joe H.</b>	
North Carolina Use of United States Postage During the Confederate State Period, A	Vol. 21, No. 4, Winter 2002-03: 9-10
<b>Crumbley, Tony L.</b>	
6 ¼ Cent Rate, The	Vol. 7, No. 2, Spring 1988: 12
1859 Visit to Charlotte, An	Vol. 10, No. 1, Winter 1991: 14-15
1869 Issue Used from North Carolina, The	Vol. 15, No. 1, Winter 1996: 3-9
1930 Type "E" Four-Bar Cancel, The	Vol. 14, No. 4, Fall 1995: 3-8
A. C. Roessler's Carolina Connection	Vol. 22, No. 3, Fall 2003: 11-12
Airplane Crash Mail of North Carolina	Vol. 22, No. 2, Summer 2003: 17
All-North Carolina Airmail Week, October 11-16, 1937	Vol. 22, No. 4, Winter 2003-04: 3-19
All North Carolina Air Mail Flight of 1937, The	Vol. 16, No. 4, Winter 1997-98: 6-10
Bartonsville, The Classic North Carolina Postal Marking	Vol. 20, No. 2, Summer 2001: 3-5
Bath – The Cradle of North Carolina	Vol. 25, No. 1, Winter 2005-06: 3-7
Battle over North Carolina's First Postmistress, The	Vol. 28, No. 2, Spring 2009: 14-15
Camp Greene	Vol. 12, No. 2, Spring 1993: 9-10

---

How Bear Poplar Got Its Name  
 Black Cities of Wake [Oberlin, Method]  
 Book Review: *Dirty Ankle is Far from Bath: How 50 Carolina Cross Roads Got Their Curious Names*  
 Charlotte Airport Mail Facilities  
 China Grove 1823 to Date  
 Collecting beyond the Covers [Post Cards Illustrating Post Offices]  
 Company Shops, A Brief Passage in Time  
 Confederate "Green Jacks" Used from North Carolina  
 Confederate Mails on the North Carolina Railroads  
 Confederate States Frameline Used in North Carolina, The  
 Contract Airmail First Flights  
 Dated North Carolina Corner Cards Used as Postal Markings  
 Davidson College  
 Davis School – A Military Boarding School  
 Doane Numeral Handstamp Cancels  
 Doanes On-line  
 Dog's Tale, A [Lillington, Four Oaks, to Dixie Hound Kennels, IL]  
 Doremus Machine Cancels of North Carolina  
 Ducks, Turkeys, Aeroplanes Make an Interesting Era of Postal History Collecting  
 Dunnsville, A Confederate Only Post Office  
 Durham, Its Legend in Tobacco  
 Early Reconstruction Letter from Raleigh, North Carolina, An E Bay Addition, An [Scott 650, Roessler Kitty Hawk Precancel]  
 Express Mail of 1836-1839  
 Fighting Ships Called "North Carolina"  
 Find of Interest, A [fancy cancel, Southport, 1891]  
 First Federal Issue Revenue of North Carolina, 1798-1801, The  
 First Postal Issue of the U.S. Postal Service, The [7-1-71 First Day Covers from North Carolina]  
 Four U.S.S. Raleighs, The  
 General Sherman's March Across North Carolina  
 Gold Hill, North Carolina's Premier Gold City  
 Greensboro, N.C., or Is It Greensborough, N.C.  
 Hillsborough Military Academy  
 History of Air Mail Service in North Carolina  
 Ignored North Carolina History, Camp Sutton, German Prisoner-of-War Camp, 1944-46  
 Impossible Cover, The [Fake Hobby Shop USS Asheville cover]  
 Introduction to the Military Encampments of North Carolina, An  
 Industrial Revolution in the Postal System, The: The First Decades of the 20th Century – Part 1  
 Industrial Revolution in the Postal System, The [Part 2]  
 Is It, or Isn't It? The Carolina City Provisional  
 James City: A Black Community in North Carolina  
 Jerusalem  
 Kittrell's Springs  
 Last Days of the Confederate Prison at Salisbury, The  
 Lost Wilmington Stamps, The  
 Madison, North Carolina  
 Martindale Markings, The

Vol. 16, No. 1, Spring 1997: 5-6  
 Vol. 20, No. 3, Fall 2001: 10-11  
 Vol. 14, No. 2, Summer 1995: 15  
  
 Vol. 22, No. 3, Fall 2003: 16  
 Vol. 16, No. 2, Summer 1997: 4-5  
 Vol. 25, No. 1, Winter 2005-06: 14-15  
  
 Vol. 13, No. 2, Spring 1994: 9-15  
 Vol. 14, No. 2, Spring 1995: 3-6  
 Vol. 16, No. 1, Spring 1997: 8-12  
 Vol. 19, No. 1, Spring 2000: 7  
 Vol. 22, No. 2, Summer 2003: 3-17  
 Vol. 17, No. 1, Spring 1998: 3-5  
 Vol. 21, No. 3, Fall 2002: 3-10  
 Vol. 24, No. 3, Summer 2005: 8-9  
 No. 5 (Vol. 2, No. 2), May 1983: 2-3  
 Vol. 24, No. 2, Spring 2005: 14-15  
 Vol. 18, No. 3, Winter 2000: 3-4  
 No. 7 (Vol. 2, No. 4), Nov. 1983: 6-7  
 Vol. 11, No. 3, Summer 1992: 7-9  
  
 Vol. 27, No. 3, Summer 2008: 3  
 Vol. 21, No. 1, Spring 2002: 7-10  
 Vol. 20, No. 2, Summer 2001: 8-10  
 Vol. 22, No. 4, Winter 2003-04: 20  
 Vol. 17, No. 2, Summer 1998: 3-7  
 Vol. 14, No. 3, Summer 1995: 3-13  
 Vol. 6, No. 4, Fall 1987: 13  
 Vol. 12, No. 4, Fall 1993: 8-10  
 Vol. 17, No. 3, Fall 1998: 14-15  
  
 Vol. 18, No. 2, Fall 1999: 3-8  
 Vol. 17, No. 3, Fall 1998: 3-5  
 Vol. 16, No. 1, Spring 1997: 14-15  
 Vol. 13, No. 4, Fall 1994: 12-15  
 Vol. 23, No. 1, Spring 2004: 39  
 No. 4 (Vol. 2, No. 1), Feb. 1983: 1-3  
 Vol. 18, No. 2, Fall 1999: 9-11  
  
 Vol. 19, No. 1, Spring 2000: 3  
 Vol. 12, No. 1, Winter 1992-93: 3-14  
 Vol. 21, No. 4, Winter 2002-03: 3-7  
  
 Vol. 22, No. 1, Spring 2003: 11-17  
 Vol. 5, No. 4, Oct. 1986: 10-14  
 Vol. 15, No. 3, Summer 1996: 3-4  
 Vol. 15, No. 2, Spring 1996: 3-5  
 Vol. 24, No. 4, Fall 2005: 10-14  
 Vol. 19, No. 3, Fall 2000: 4-6  
 Vol. 20, No. 1, Spring 2001: 12-15  
 Vol. 25, No. 4, Fall 2006: 4-7  
 Vol. 12, No. 4, Fall 1993: 11



Mining Town of Ore Knob, Ashe County, The  
 Modern Day Postal History Project, A  
 More on Rural Station Markings [Blue Ridge Rural Station]  
 Mourning Covers from North Carolina  
 Murfreesboro's Wesleyan Female Academy  
 National Air Mail Week – May 15-21, 1938 (A North  
     Carolinian the National Chairman)  
 N.C. Doane Cancel Update  
 New Chapel Hill Marking [1827], A  
 New Charlotte Crown Comes to Light, A  
 Newly Discovered Confederate Express Company Label, A  
 North Carolina Airport Dedications  
 North Carolina at Sea  
 North Carolina Confederate Fantasies, The  
 North Carolina Fortifications, An Encyclopedia of Military Bases  
     in North Carolina, Part One  
 North Carolina Fortifications, An Encyclopedia of Military Bases  
     in North Carolina, Part Two  
 North Carolina Institution for the Deaf and Dumb and Blind –  
     1844  
 “North Carolina, October 15, 1759” – Earliest Known Usage  
 North Carolina Postal History Bibliography  
 North Carolina's Copy of the Declaration of Independence  
     [Bill of Rights]  
 North Carolina's Only Embossed Postmark? [Glen Anna  
     Female Seminary, Taylorsville]  
 North Carolina's Tobacco Advertising Covers  
 O. A. Keehl's Salem Post Office  
 Official Government Airmail Flights from North Carolina  
 On a Warm, Clear September Morn... , The Lenoir Provisional  
 Only Known Copy, The [Franklin, Salisbury, Hillsboro, Chapel  
     Hill, Gaston, Greensboro Confederate Postmaster Provisionals;  
     Shallotte 1858 Free; Charlotte 1897 Tractor Tire Cancel]  
 Oxford – The City of Two Orphanages  
 Pamlico County  
 Patterson, N.C. Confederate Fancy Cancels, The  
 Philatelic Truck – A First Day of Issue for North Carolina  
 Pine Bluff – The Other Carolina Resort Community  
 Portsmouth Island, NC  
 Postal History of Charlotte, North Carolina, The  
 Postal History of Dare County, A  
 Postal Route from Cherry Lane to Trap Hill, The  
 Purple Machine Cancels of North Carolina, The  
 Quarter Cent Tip for the Postmaster, A [6¼ cent rate]  
 Railroad One Day, A Cannon the Next, A [Statesville Line;  
     Atlantic, Tennessee, and Ohio Railroad; Davidson  
     College, A.T. & O. postmark]  
 Raleigh's 68XU1 Provisional, Another Variety  
 Recent Discovery, A [fancy CDS, Winston-Salem, 1833]  
 Revisiting the Confederate 2c Green Jackson Issue  
 Richard P. Boone North Carolina Cachet Maker  
 Setting the Record Straight [secession date of North Carolina]

Vol. 17, No. 1, Spring 1998: 9  
 Vol. 26, No. 1, Winter 2006-07: 3-5  
 Vol. 16, No. 3, Fall 1997: 13  
 Vol. 23, No. 3, Fall 2004: 3-8  
 Vol. 20, No. 3, Summer 2001: 5-8  
 No. 13 (Vol. 4, No. 2), Apr. 1985: 5-6

Vol. 15, No. 2, Spring, 1996: 7-12  
 Vol. 5, No. 4, Oct. 1986: 17  
 Vol. 8, No. 2, Summer 1989: 4  
 Vol. 9, No. 2, Spring 1990: 6-8  
 Vol. 22, No. 1, Spring 2003: 3-10  
 Vol. 19, No. 2, Summer 2000: 3-15  
 Vol. 13, No. 4, Fall 1994: 4  
 Vol. 12, No. 1, Winter 1992-93: 3-8

Vol. 12, No. 2, Spring 1993: 3-8

Vol. 28, No. 4, Fall 2009: 3-7

Vol. 10, No. 2, Spring 1991: 6-7  
 No. 12 (Vol. 4, No. 1), Jan. 1985: 5-9  
 Vol. 23, No. 2, Summer 2004: 13-15

Vol. 15, No. 3, Summer 1996: 10-11

Vol. 28, No. 3, Summer 2009: 3-8  
 Vol. 5, No. 2, Apr. 1986: 2-5  
 Vol. 22, No. 3, Fall 2003: 14-15  
 Vol. 7, No. 3, Summer 1988: 3-7  
 Vol. 10, No. 2, Spring 1991: 8-11

Vol. 26, No. 1, Winter 2006-07: 13-15  
 Vol. 23, No. 2, Summer 2004: 3-11  
 Vol. 11, No. 3, Summer 1992: 5  
 No. 8 (Vol. 3, No. 1), Feb. 1984: 3-6  
 Vol. 26, No. 3, Summer 2007: 4-6  
 Vol. 26, No. 4, Fall 2007: 4-7  
 No. 11 (Vol. 3, No. 4), Nov. 1984: 1-10  
 Vol. 7, No. 1, Winter 1988: 3-12  
 Vol. 17, No. 2, Summer 1998: 8-11  
 Vol. 20, No. 1, Spring 2001: 9-11  
 Vol. 18, No. 1, Summer 1999: 6-10  
 Vol. 10, No. 4, Fall 1991: 2

Vol. 27, No. 3, Summer 2008: 11-13  
 Vol. 5, No. 2, Apr. 1986: 5  
 Vol. 14, No. 4, Fall 1995: 14  
 Vol. 19, No. 1, Spring 2000: 8-11  
 Vol. 15, No. 1, Winter 1996: 12-13

Setting the Record Straight-er [NC, TN independent state periods]	Vol. 15, No. 2, Spring 1996: 12
Size Doesn't Make Rarity – Flat Rock, NC	Vol. 20, No. 2, Summer 2001: 12-15
Smithfield, North Carolina: 200 Years of Postal History	Vol. 27, No. 4, Fall 2008: 11-15
Sneedsboro, Anson County, A Colorful Inland Port City	Vol. 14, No. 1, Winter 1995: 4-5
Springs of North Carolina, The	Vol. 27, No. 1, Winter 2008: 14-19
Stanly County, Nature's Wonders Driving the Local Economy	Vol. 24, No. 1, Winter 2004-05: 3-13
And Creating a Plentiful Postal History	
Star Shines Bright at the Center of North Carolina, A [Star, N.C.]	Vol. 14, No. 4, Fall 1995: 9-15
Stroupe, Vernon S., Jr. (obituary)	Vol. 25, No. 3*, Summer 2006: 3
There's More to Wake than Raleigh [Apex, Cary, Green Level, Holly Springs, New Hill, Wake Forest College]	Vol. 20, No. 4, Winter 2001-02: 3-5
Three Cent Confederate Rate?, A	Vol. 18, No. 3, Winter 2003: 9-10
Unique Confederate States General Issue Cover, A [Largest Known Multiple of #7, Wilmington],	Vol. 16, No. 4, Winter 1997-98: 3
Vernon S. Stroupe, Jr., 1927-2006 [pages from his collection]	Vol. 25, No. 3, Summer 2006: 3-15
Way Mail of North Carolina	Vol. 21, No. 2, Summer 2002: 6-10
Who's Who in the NCPHS [Phillip Wall, biographical Sketch]	Vol. 27, No. 2, Spring 2008: 3
Wilmington and Raleigh Railroad, The	Vol. 28, No. 1, Winter 2009: 11-15
Wilmington Blockade Cover, A	Vol. 20, No. 2, Summer 2001: 10-12
Wilmington Seven Bar Killer on a Confederate Two-Cent Red Jackson, The	Vol. 11, No. 3, Summer 1992: 6
Winston-Salem Postmaster's Postmark	Vol. 23, No. 1, Spring 2004: 15
Wright Pylon Dedication	Vol. 22, No. 4, Winter 2003-04: 21
WWII Ration Stamps Preventing Chaos	Vol. 20, No. 1, Spring 2001: 5-8
<b>Crumbley, Tony L.; McDowell, Harry L.</b>	
That Other Murfreesboro College: Chowan	Vol. 20, No. 3, Fall 2001: 5-7
<b>Crumbley, Tony L.; Stroupe, Vernon S.</b>	
Postal History of Concord, A	Vol. 9, No. 4, Fall 1990: 3-8
<b>Crumbley, Tony L.; Wetmore, Ruth Y.</b>	
Robeson County, Resting Place of Virginia Dare?	Vol. 21, No. 1, Spring 2002: 13-14
<b>Doares, Robert F., Jr.</b>	
North Carolina Civil War Post Office to Issue Anniversary Cover [Raft Swamp postal history]	Vol. 15, No. 2, Spring 1996: 13-14
Raft Swamp: North Carolina's Oldest Postal Building?	Vol. 8, No. 2, Summer 1989: 8-11
<b>Editor</b>	
Buyer Beware! [fake Greensboro Paid 10 patriotic]	Vol. 13, No. 4, Fall 1994: 11
Caldwell, Jean Bellamy (obituary)	Vol. 24, No. 4, Fall 2005: 15
Collector's Peek into the Past, A [1895 Prices in Advertisement from Warren Plains]	Vol. 21, No. 4, Winter 2002-03: 15
Colonial Rarities Surface	Vol. 20, No. 3, Fall 2001: 3-4
Correct Size for the Raleigh Type 3 [CDS]	Vol. 20, No. 3, Fall 2001: 3
Cumulative Index to the NCPHS Newsletter and Postal Historian, 1982 – 1997	Vol. 15, No. 4, Winter 1997: 12-15
Cumulative Index to the NCPHS Newsletter, 1982-1994 and Postal Historian, 1994-2001	Vol. 20, No. 4, Winter 2001-02: 14-19
Dunn's Rock, N.C., Western N.C. During the Civil War	Vol. 7, No. 3, Summer 1988: 14
Early Reconstruction Letter from Raleigh, An	Vol. 19, No. 3, Fall 2000: 14-15
From the Archives [Murfreesboro cover, Oct 28, 1808]	Vol. 13, No. 4, Fall 1994: 16
From the Files [Quantities of Scott 1 and 2 Shipped, 1848-51]	No. 2, Jul. 1982: 2
From the N.C. Archives [Mount Tirzah, 1796]	Vol. 10, No. 3, Summer 1991: 15

Grimshawes [from unknown newspaper, July 9, 1944]	No. 15 (Vol. 4, No. 4), Oct. 1985: 14
Harris, James P. (obituary)	Vol. 15, No. 2, Spring 1996: 2
Harter, William (notice of death)	Vol. 9, No. 4, Fall 1990: 2
Holt, W. Clary (obituary)	Vol. 22, No. 4, Winter 2003-04: 20
Horner & Horner School, Oxford, N.C.	Vol. 12, No. 3, Summer 1993: 15
Hugh Finlay Journal, The [from Brooklyn Mercantile Library Association, 1867, reprinted by U. S. Philatelic Classics Society, 1975.]	Vol. 9, No. 4, Fall 1990: 9-15
Hunt, Robert H. (obituary)	Vol. 21, No. 3, Fall 2002: 12
Humphrey-Williams-Smith House Wins National Preservation Award [Raft Swamp; from <i>Historic Preservation News</i> , 1991]	Vol. 10, No. 2, Spring 1991: 12
Is This Cancellation in Your Collection? [Hillsborough]	Vol. 14, No. 1, Winter 1995: 16
Letter from the Past [Petersburg & Roanoke Rail Road, 1845]	Vol. 7, No. 4, Fall 1988: 14
Letter from the Past, An 1835 Letter from Roanoke Island [Elizabeth City CDS]	Vol. 7, No. 1, Winter 1988: 20
Letter from the Past, Education in Eastern North Carolina, 1829 [Pantego]	Vol. 6, No. 1, Winter 1987: 17-18
Letter from the Past, Hard Times in Wilmington [1865]	Vol. 6, No. 3, Summer 1987: 16
Letter from the Past, A Journey during the War of 1812	Vol. 6, No. 4, Fall 1987: 14
Letter from the Past, Low Morale at War's End	Vol. 8, No. 1, Winter 1989: 20
Letter from the Past, Moravian Salem in 1786	Vol. 6, No. 2, Spring 1987: 24
Letter from the Past, The New Garden Quaker Community	Vol. 7, No. 2, Spring 1988: 16
Marking Up-Dates	Vol. 20, No. 3, Fall 2001: 2
McDowell, Harry L. (obituary)	Vol. 22, No. 4, Winter 2003-04: 20
Meet Founding Member Rich Weiner	Vol. 28, No. 1, Winter 2009: 9
Newbern, North Carolina Roulettes [1851 issue]	Vol. 15, No. 1, Winter 1996: 10-11
North Carolina Postal History Exhibit Opens	Vol. 18, No. 1, Summer 1999: 3-4
Notice in the North Carolina Gazette – 1 Aug. 1797 [Newbern Post Office advertisement]	Vol. 20, No. 3, Fall 2001: 9
Painting in North Carolina Museum of Art to Be Used on 1993 Christmas Stamp	Vol. 11, No. 5, Winter 1992: 15
Postal Notes of Company's Shops/Burlington	Vol. 19, No. 1, Spring 2000: 4-6
Postmaster Finder – Postal History Database Available To the Public	Vol. 20, No. 4, Winter 2001-02: 8
Rural Delivery Route No. 1, Pine Hall, Stokes Co., N.C.	Vol. 5, No. 1, Jan. 1986: 12
Salvo, State's Smallest Post Office, to Reopen?	Vol. 12, No. 4, Fall 1993: 13
Sapperstein, Perry M. (obituary)	Vol. 16, No. 1, Spring 1997: 2
Scott, George (notice of death)	Vol. 7, No. 1, Winter 1988: 19
Snow Camp, Not Snow Hill	Vol. 24, No. 4, Fall 2005: 14
Those Davison College Illustrated Covers	Vol. 23, No. 3, Fall 2004: 15
Wicker, Milton G., obituary	Vol. 8, No. 1, Winter 1989: 2
<b>Ertzberger, Darrell R.</b>	
County and Postmaster Cancels of North Carolina	No. 15 (Vol. 4, No. 4), Oct. 1985: 3-13
The First County-Wide RFD System in North Carolina: Mecklenburg County	Vol. 14, No. 1, Winter 1995: 8-11
Forsyth County Covers 1841-1986	Vol. 5, No. 2, Apr. 1986: 9-20
Free City Delivery in North Carolina	No. 13 (Vol. 4, No. 2), Apr. 1985: 3-6
Postal History of Davie County, A	Vol. 5, No. 3, Apr. 1986: 3-13
Silver, Stanly County, North Carolina	No. 10 (Vol. 3, No. 3), Aug. 1984: 1-2
<b>Estus, Glenn</b>	
U.S. Postal Service, Official Sponsor of 1992 Olympic Games	Vol. 16, No. 4, Winter 1997-98: 12-13
<b>Fricke, Charles A.</b>	
Multifaceted Kawana, Mitchell County, Postmark, A	Vol. 11, No. 2, Spring 1992: 14-15



---

<b>Gallico, Paul</b>	
Thinking Aloud [Attempt to Report Wright Brothers' First Flight, from the Norfolk Landmark, ca. 1948]	Vol. 22, No. 3, Fall 2003: 13
<b>Goerch, Carl</b>	
Many Tar Heel Postoffices Have Been Given Odd Names [from Washington Daily News, ca. 1921-1931]	Vol. 9, No. 3, Summer 1990: 10-12
<b>Green, Brian</b>	
Two New North Carolina Postal Markings Come to Light [Abbotts Creek, Paid 3; Jamestown, Paid 1]	Vol. 9, No. 2, Spring 1990: 3
<b>Green, Maria and Brian</b>	
White Road, N.C. Confederate Cover, A	Vol. 10, No. 2, Spring 1991: 13
<b>Griffin, Flora G.</b>	
Tales of the Mail Route Days of Luther S. Griffin [Unionville Rural Route 2]	Vol. 7, No. 1, Winter 1988: 13-14
<b>Hall, Charles F., Jr.</b>	
Postal History of the Fayetteville Arsenal and Armory, The	Vol. 28, No. 3, Summer 2009: 9-14
<b>Harrison, Galen</b>	
Salisbury Prison - December 1861 - April 1865	Vol. 19, No. 3, Fall 2000: 7-13
<b>Harter, William &amp; Marian</b>	
History of the Spencer Post Office, A	Vol. 6, No. 3, Summer 1987: 13-15
<b>Hecht, Arthur</b>	
Postal History of North Carolina, 1789-1795, Part I [from the <i>North Carolina Historical Review</i> , Vol. 35, No. 2, 1958: 125-152]	Vol. 8, No. 1, Winter 1989: 12-19
Postal History of North Carolina, 1789-1795, Part II [ibid.]	Vol. 8, No. 3, Fall 1989, 4-12
<b>Hensley, Tim</b>	
All Aboard for the Virginia Creeper [Norfolk & Western in Ashe County, from Steam, Steel & Stars: America's Last Steam Railroad]	Vol. 15, No. 3, Summer 1996: 5-7
<b>Herring, Harriett</b>	
Cacheted Envelope Issued in Swansboro	Vol. 6, No. 2, Spring 1987: 23
<b>Holt, W. Clary</b>	
1863 Refugee Banking in Company Shops	Vol. 20, No. 1, Spring 2001: 3-4
College Covers, University of North Carolina	Vol. 17, No. 4, Winter 1999: 3-11
Money Problem, A [Chapel Hill provisional Paid 5]	Vol. 21, No. 1, Spring 2002: 15
Refusing to Shake Hands – Near the Courthouse in Graham [Christian Conference Correspondence]	Vol. 20, No. 3, Fall 2001: 7-9
The Story of a Turned Cover, The [Raleigh, Saxapahaw to Clover Orchard]	Vol. 21, No. 4, Winter 2002-03: 7-8
<b>Homesly, Greg</b>	
Confederate Cover Addressed to Swann's Station	Vol. 10, No. 4, Fall 1992: 14-15
Siler City Pseudo Machine Postmark, A North Carolina Rarity, The	Vol. 12, No. 4, Fall 1993: 7
Wilmington & Fayetteville River Route Marking	Vol. 10, No. 4, Fall 1991: 19
<b>Hulme, Wilson</b>	
New Bern Roulettes, A Request for Information	Vol. 15, No. 1, Winter 1996: 10
<b>Jaronski, Stefan T.</b>	
Contemporary Accounts of the Union Occupation Post Office at New Berne, North Carolina	No. 12 (Vol. 4, No. 1), Jan. 1985: 1-2
Mail from Roanoke Island in the Civil War	No. 13 (Vol. 4, No. 2), Apr. 1985: 7-9
Postal Service for the Confederate Defenders of Roanoke Island	Vol. 7, No. 3, Summer 1988: 10-12
Postal Services during Initial Occupation of New Berne, North Carolina	No. 12 (Vol. 4, No. 1), Jan. 1985: 3-4

---

---

<b>Johnston, Hugh Buckner, Ed.</b>	
Journal of Ebenezer Hazard in North Carolina, 1777 and 1778, The [from the <i>North Carolina Historical Review</i> , Vol. 36, No. 3, 1959: 358-381]	Vol. 10, No. 1, Winter 1991: 4-13
<b>Justesen, Ben</b>	
African American Postmasters in North Carolina, 1874-1909	Vol. 25, No. 2, Spring 2006: 3-11
<b>Lasley, W. T.</b>	
First Rural Delivery in North Carolina Began at China Grove, The	No. 13 (Vol. 4, No. 2), Apr. 1985, 1-3
<b>Leland, Elizabeth</b>	
Petite Post Office Makes 'Em Proud [Salvo, from the <i>Charlotte Observer</i> , July 25, 1988]	Vol. 7, No. 4, Fall 1988: 12-13
<b>Lohr, Lawrence L.</b>	
Adding a New Frame-Line to the List [Concord – Mt. Pleasant] Post-Civil War Correspondence of the Lenoir Family of Fort Defiance, North Carolina, The	Vol. 25, No. 1, Winter 2005-06: 8 Vol. 11, No. 2, Spring 1992: 3-7
<b>Lupton, David W.</b>	
Hog Island and Lupton, North Carolina	Vol. 15, No. 4, Winter 1997: 9-10
<b>Mandel, Frank</b>	
Identification of Postmark Types Produced from Handstamps Made by Edmond S. Zevely, 1850-1861 [from the <i>American Philatelic Congress Book</i> , 1987]	Vol. 10, No. 3, Summer 1991: 3-9
<b>Mattox, Doug</b>	
Site Survey of the Wendell Post Office Submitted	Vol. 11, No. 5, Winter 1992: 13
<b>Mayes, Helen V.; Troutman, Scott</b>	
Oxford, Granville County, Its Nineteenth Century Postal History	Vol. 12, No. 3, Summer 1993: 3-14
<b>McDowell, Harry L.</b>	
Scotland Neck Postmarks, 1797-1900 Mount Tirzah, An 18th Century Post Office	Vol. 7, No. 4, Fall 1988: 3-8 Vol. 18, No. 1, Summer 1991: 11-13
<b>McRee, Timothy M.</b>	
North Carolina Hunting and Fishing Stamp Update, 1988-1991 North Carolina Hunting and Fishing Stamps North Carolina Hunting and Fishing Stamps, 1986-87 and 1987-88	Vol. 11, No. 5, Winter 1992: 8-12 Vol. 6, No. 4, Fall 1987: 6-9 Vol. 9, No. 2, Spring 1990: 8-11
<b>Monroe, James L. D.</b>	
Confederate States Blockade Mourning Cover with Frameline Unique Independent Statehood Cover, A	Vol. 21, No. 4, Winter 2002-03: 11 Vol. 21, No. 4, Winter 2002-03: 12
<b>Nelson, Frank J.</b>	
Camp Hoffman: Where Did It Go? Fallstown, Iredell County	Vol. 18, No. 2, Fall 1999: 12-13 Vol. 18, No. 2, Fall 1999: 15
<b>O'Sullivan, Thomas J.</b>	
North Carolina's Pioneer Air Mail: Wilmington, 1912 [from <i>The Pioneer Airplane Mails of the United States</i> , American Air Mail Society, 1985.]	Vol. 5, No. 4, Oct. 1986: 3-5
<b>Otterbrough, Ken</b>	
Coal-Mining Disaster of '25 was N.C.'s Worst [from the <i>Winston-Salem Journal</i> ]	Vol. 13, No. 2, Spring 1994: 3-8
<b>Parris, John</b>	
Marion Jones Unearths Dillsboro Postal History [from the <i>Asheville Citizen-Times</i> , Aug. 30, 1987]	Vol. 6, No. 4, Fall 1987: 11-12
<b>Perkinson, Phil</b>	
Pearl Diving in the Warren County Landfill [Axtell cover and Enclosure Matched] Postal History of Vance County	Vol. 18, No. 3, Winter 2000: 11 Vol. 20, No. 4, Winter 2001-02: 9-11

---

Postal Operations in Vance County	No. 7 (Vol. 2, No. 4) Nov. 1983: 2-5
<b>Perkinson, Phil; Crumbley, Tony L.</b>	
Raleigh Bayonet Factory, The	Vol. 21, No. 1, Spring 2002: 11-12
<b>Postlewait, Dilmond D.</b>	
Precancels in North Carolina	Vol. 8, No. 2, Summer 1989: 5-7
<b>Richardson, Thomas S.</b>	
1847 Issue in North Carolina, The	Vol. 16, No. 3, Fall 1997: 3-10
1869 Update, An	Vol. 26, No. 4, Fall 2007: 12-13
Search for Leo, The	Vol. 8, No. 2, Summer 1989: 3
<b>Richardson, Thomas S.; Schoolmeester, Kenneth</b>	
Quantities of the 1c, 3c, and 12c Issues Delivered to North Carolina in July 1851	Vol. 9, No. 3, Summer 1990: 3-5
<b>Roughton, Jerry R.</b>	
Duncan MacRae, Postmaster of Fayetteville	Vol. 25, No. 1, Winter 2005-06: 10-11
Medical Remedies for Man's Ailments	Vol. 20, No. 4, Winter 2001-02: 6-8
Natural Wells Post Office, 1892-1903	Vol. 16, No. 2, Summer 1997: 5
<b>Rupert, Art; McCord, Davie R.</b>	
North Carolina Rural Stations	Vol. 16, No. 2, Summer 1997: 6-12
North Carolina Rural Station Update	Vol. 16, No. 3, Fall 1997: 14-15
<b>Sanford, Robert L.</b>	
Old Covers Made Good Note Pads	Vol. 12, No. 2, Spring 1993: 11
<b>Scheuer, Henry B.</b>	
Kennedy First Day Covers	Vol. 11, No. 3, Summer 1992: 14-15
<b>Schoolmeester, Ken</b>	
James C. Johnston, Esq.	Vol. 6, No. 1, Winter 1987: 10-11
North Carolina Fancy Cancels	Vol. 8, No. 1, Winter 1989: 3-9
North Carolina Octagonal Postmarks	Vol. 6, No. 4, Fall 1987: 3-5
Old Post Offices Never Die... [Jarvisburg, Grandy, Hertford]	Vol. 5, No. 4, Oct. 1986: 14-16
<b>Scott, Bob</b>	
Nation's Smallest Post Office Will Be No More [from <i>The Asheville Citizen</i> , March 7, 1986]	Vol. 5, No. 3, Jul. 1986: 14
<b>Sharpe, Bill</b>	
From the <i>State Magazine</i> , Sept 15, 1968 [from From Murphy to Manteo, Sell Out, p. 19; Mashoes]	Vol. 10, No. 2, Spring 1991: 7]
<b>Sherrill, Betty</b>	
Old Post Office Not Forgotten, Puella Post Office One of 40 Sites for Rural Mail Delivery [from the <i>Asheville Citizen-Times</i> , 24 Jan. 1990]	Vol. 14, No. 1, Winter 1995: 14-15
<b>Sparks, Howard J.</b>	
Postal History on a Shoestring [Greensboro, mid-1980s]	Vol. 6, No. 2, Spring 1987: 21-22
<b>Stanton, Thomas E.</b>	
Reopening North Carolina Post Offices, 1865-70	Vol. 6, No. 3, Summer 1987: 3-11
<b>Stets, Robert J.</b>	
Confederate Post Office Department Letters	Vol. 16, No. 1, Spring 1997: 7
More about Oxford, Granville County, N.C.	Vol. 12, No. 4, Fall 1993: 3-4
Postal History of North Carolina, 1789-1795, An Epilogue	Vol. 8, No. 3, Fall 1989: 12-14
Post Cards Tell the Story	Vol. 15, No. 4, Winter 1997: 3-4
Those "Unofficial" Self-Inking Postmarkers	Vol. 7, No. 2, Spring 1988: 3-6
Why Were There Two Postmasters at Greensboro in 1811?	Vol. 14, No. 1, Winter 1995: 6
<b>Stout, Garland</b>	
More on Spencer Postal History	Vol. 6, No. 4, Fall 1987: 12

---

**Stroupe, Vernon S.**

Book Review: *North Carolina Petitions for Presidential Pardons, 1865-67*: by Russell S. Koonts  
Buyer Beware [Fake Greensboro Confederate Cover]  
Covers are Seldom What They seem [Halifax, Oaks]  
Edenton Straight-Line Post Mark Better Defined  
Errors in "Postal History - The Basics"  
First Federally Appointed Woman Postmaster, The  
First North Carolina Post Office Site Survey Submitted  
From the Archives, A Manuscript Circular Date Stamp [Murphy]  
From the Archives (Murfreesboro)  
Gold Nuggets from the N.C. State Archives  
Marking Update [Hillsborough]  
More DPO's in the Making [Candidates near Charlotte]  
New Asheville Marking, Type 3.5, A  
New Berne, Mr. Typographer, Not Newbern  
New Discovery, A [Hotel, N.C., fancy cancel, 1857]  
New Find, A [Fayetteville paid in oval sunburst, 1822, 1824]  
New Raleigh Post Mark Identified – Type 18.5  
Philatelic Treasures from the State Archives  
Postal History - The Basics  
Postmarks or Cinderellas?  
The Raft Swamp Challenge, The  
Slow Mail on the Raleigh & Gaston Railroad  
Time Warp at Raft Swamp, A  
Twenty-Fifth Anniversary of the Wright Brothers' Flight, The  
Two Different Salem Postmarks [1852-60 and 1861-1865]  
Visiting Columbus [OH], A Really Good Stamp Show

**Stroupe, Vernon S.; Crumbley, Tony L.**

Postal History of Asheville

**Tilles, Harvey**

Highway Post Offices of North Carolina, The  
Manuscript Postal Markings from North Carolina  
North Carolina Statehood Bicentennial Cancels  
Post Roads into North Carolina (Excerpts from the 1820  
Postal Manual)

**Troutman, Scott**

Abshers, Dockery and Joynes, Wilkes County, N.C.  
Additional Pamlico County Markings  
Atlantic, Tennessee & Ohio Cover  
Belvidere, Perquimans County  
Confederate Letter after the Battle of Roanoke Island  
Durants of Durant's Neck – Perquimans County, The  
Duck  
Early Invitation from Sandy Mush, An  
Englehard, Hyde County  
Envelope from Cobb's, An  
Fast Freight from Baltimore [through Wilmington by Steamer]  
Fort Johnston, Brunswick County  
Fourth Railroad over the Blue Ridge, The  
Galax for Sale in Low Gap, NC  
Goldsboro & Morehead City Agent Marking

Vol. 15, No. 1, Winter 1995: 2  
  
Vol. 13, No. 4, Fall 1994: 11  
Vol. 19, No. 1, Spring 2000: 12-13  
Vol. 11, No. 5, Winter 1992-93: 14  
Vol. 14, No. 3, Summer 1995: 14  
Vol. 25, No. 1, Winter 2005-06: 13  
Vol. 9, No. 3, Summer 1990: 7-9  
Vol. 12, No. 4, Fall 1993: 12  
Vol. 13, No. 3, Fall 1994: 16  
Vol. 7, No. 4, Fall 1988: 10-12  
Vol. 14, No. 2, Spring 1995: 16  
Vol. 23, No. 1, Spring 2004: 10  
Vol. 24, No. 4, Fall 2005: 9  
Vol. 13, No. 4, Fall 1994: 5  
Vol. 7, No. 2, Spring 1988: 10  
No. 13 (Vol. 4, No. 2), Apr. 1985: 9-10  
Vol. 25, No. 1, Winter 2005-06: 12-13  
Vol. 6, No. 1, Winter 1987: 12-14  
Vol. 14, No. 2, Spring 1995: 8-14  
Vol. 15, No. 3, Summer 1996: 10-11  
Vol. 8, No. 2, Summer 1989: 12  
Vol. 6, No. 4, Fall 1987: 10  
Vol. 8, No. 2, Summer 1989: 11  
Vol. 22, No. 3, Fall 2003: 3-4  
Vol. 7, No. 1, Winter 1988: 19  
Vol. 22, No. 3, Fall 2003: 2  
  
Vol. 24, No. 4, Fall 2005: 3-8

No. 8 (Vol. 3, No. 1), Feb. 1984: 1-3  
Vol. 5, No. 3, Jul. 1986: 17  
Vol. 26, No. 3, Summer 2007: 8-12  
No. 10 (Vol. 3, No. 3), Aug. 1984: 5-6

Vol. 11, No. 3, Summer 1992: 11-13  
Vol. 23, No. 2, Summer 2004: 10-11  
Vol. 26, No. 3, Summer 2007: 13  
Vol. 16, No. 4, Winter 1997-98: 15  
Vol. 25, No. 4, Fall 2006: 10-13  
Vol. 26, No. 3, Summer 2007: 7  
Vol. 21, No. 4, Winter 2002-03: 13-14  
Vol. 20, No. 3, Fall 2001: 12  
Vol. 13, No. 4, Fall 1994: 6-7  
Vol. 23, No. 3, Fall 2004: 13-14  
Vol. 25, No. 1, Winter 2005-06: 9  
Vol. 24, No. 3, Summer 2005: 11-12  
Vol. 15, No. 2, Spring 1996: 5-7  
Vol. 26, No. 4, Fall 2007: 11  
Vol. 26, No. 4, Fall 2007: 14-15

History (Postal and Otherwise) of the Towns (Houck, Mortimer, Akako, and Edgemont) along Wilson Creek Gorge, Caldwell County, N.C., A  
 Individual Railroad Clerk Markings  
 Jerusalem, N.C.  
 Kitty Hawk, Derivation of the Name  
 Lake Landing, Hyde County  
 Lenoir and Lancaster Railroad Post Office  
 Letter from the Past, A Union Soldier at Fort Fisher, N.C., A  
 Letter from the Tweetsie, A  
 Letters from the 6th New Hampshire  
 Letters from the Phebe  
 Look at the Lightship Service in North Carolina, A  
 Mamie, Currituck County  
 Margarettsville, N. C. Cover, A  
 Mining Town of Ore Knob, Ashe County, The  
 New Lebanon and South Mills – Camden County  
 New Railway Post Office Cancel Found [Wilm. & Ruth. R.P.O.]  
 North Carolina Sales Tax Coupons  
 North Carolina Sprayed-on Postmarks  
 North Carolina's First Rural Mail Carrier  
 North Carolina's Smallest Post Office a Victim of Arson [Salvo]  
 Notes on the Last "Letter from the Past" [Roanoke Island, 1835]  
 Old Mica Mine Cover [Soda Creek, Gap Creek]  
 Pantego to Tuscarora – Two Remarkable R.P.O. Covers  
 Personal Contents of the Allen Letters, A glimpse into  
 Life at Tally Ho, The  
 Plymouth, N.C. Find  
 Portsmouth Cover, A  
 Postmaster Alters History at Kill Devil Hills, A  
 Pre-Civil War Railroads of North Carolina, Their Histories  
 and Postal Markings  
 Relook at St. Lewis, N.C., A  
 Rise and Fall of Camp Davis, The  
 Shipyard [Camden County]  
 Sinful Doings in Stokes County [1862]  
 Sneads Ferry, Onslow County  
 Sodom, Madison County  
 Some Early Mt. Gilead History  
 Stampless Cover from Hoylesville, N.C., A  
 Straits, Gloucester and Marshallberg  
 Swan Quarter, Hyde County  
 Swansboro, Onslow County  
 Tale of Two Lost Cities, Diamond City and Dymond City  
 Tally Ho, The Town and Postal History of Tally Ho,  
 North Carolina  
 Top Hits of 1846, The [Nags Head via Edenton to New York]  
 Two New North Carolina Fancy Cancels [Ridgeway,  
 Washington]  
 Wanchese, Roanoke Island, Dare County  
 Waterlily, Currituck County  
 Wiles, Wilkes County, N.C.  
 Wilmington & Manchester Rail Road Cover

Vol. 11, No. 5, Winter 1992: 3-7  
  
 Vol. 20, No. 3, Fall 2001: 13-14  
 Vol. 7, No. 2, Spring 1988: 11-12  
 Vol. 22, No. 3, Fall 2003: 4  
 Vol. 14, No. 1, Winter 1995:12-13  
 Vol. 24, No. 3, Fall 2005: 10-11  
 Vol. 10, No. 3, Summer 1991: 10-11  
 Vol. 15, No. 2, Spring 1996: 15  
 Vol. 7, No. 1, Winter 1988: 15-18  
 Vol. 17, No. 3, Fall 1998: 6-9  
 Vol. 10, No. 1, Winter 1991: 3-4  
 Vol. 19, No. 1, Spring 2000: 15  
 Vol. 10, No. 3, Summer 1991: 10  
 Vol. 18, No. 2, Fall 1999: 14  
 Vol. 23, No. 1, Spring 2004: 11-13  
 Vol. 14, No. 4, Fall 1995: 15  
 Vol. 25, No. 2, Spring 2006: 12-13  
 Vol. 12, No. 2, Spring 1993: 12-13  
 Vol. 16, No. 2, Summer 1997: 4  
 Vol. 12, No. 2, Spring 1993: 15  
 Vol. 7, No. 2, Spring 1988: 15  
 Vol. 16, No. 4, Winter 1997-98: 14  
 Vol. 18, No. 3, Winter 2000: 7  
 Vol. 11, No. 2, Spring 1992: 13  
  
 Vol. 25, No. 4, Fall 2006: 14  
 Vol. 25, No. 1, Winter 2005-06: 8-9  
 Vol. 22, No. 3, Fall 2003: 5-10  
 Vol. 10, No. 4, Fall 1991: 3-18  
  
 Vol. 25, No. 4, Fall 2006: 3  
 Vol. 11, No. 5, Winter 1992: 14-15  
 Vol. 25, No. 1, Winter 2005-06: 12  
 Vol. 7, No. 3, Summer 1988: 13  
 Vol. 28, No. 4, Fall 2009: 12-13  
 Vol. 15, No. 3, Summer 1996: 9  
 Vol. 15, No. 4, Winter 1997: 11  
 Vol. 12, No. 2, Spring 1993: 14  
 Vol. 15, No. 1, Winter 1996: 14-15  
 Vol. 13, No. 4, Fall 1994: 9-11  
 Vol. 25, No. 4, Fall 2006: 8-9  
 Vol. 23, No. 1, Spring 2004: 14  
 Vol. 11, No. 2, Spring 1992: 11-13  
  
 Vol. 25, No. 2, Spring 2006: 14-15  
 Vol. 13, No. 3, Summer 1994: 15  
  
 Vol. 26, No. 4, Fall 2007: 8-10  
 Vol. 15, No. 3, Summer 1996: 8-9  
 Vol. 11, No. 3, Summer 1992: 3-4  
 Vol. 24, No. 3, Summer 2005: 13



Wilmington, Charlotte & Rutherford Rail Road Cover	Vol. 16, No. 1, Spring 1997: 13-14
Wilson & Fayetteville Railroad Post Office	Vol. 23, No. 2, Summer 2004: 15
Zouaves in North Carolina, The	Vol. 24, No. 2, Spring 2005: 3-4
<b>Troutman, Scott and Amy</b>	
Scott and Amy vs. the Light House, N. C. Cover	Vol. 9, No. 2, Spring 1990: 4-6
St. Lewis, N.C.	Vol. 9, No. 3, Summer 1990: 6-7
Victim of Fraud [Greensboro, UX5, 1880]	Vol. 10, No. 1, Winter 1991: 13
<b>Troutman, Scott; Crumbley, Tony L.</b>	
Mt. Gilead – Montgomery County	Vol. 17, No. 1, Spring 1998: 5-8
One Place through Time – Pierces Forge, Bairds Forge, Lovelady, Granite and Granite Falls – Caldwell County	Vol. 15, No. 4, Winter 1997: 4-8
<b>Troutman, Scott; Mayes, Helen V.</b>	
Horner's School, Oxford, N.C.	Vol. 12, No. 4, Fall 1993: 5-6
<b>Venable, Marion</b>	
New Document on Our Most Famous Citizens, A [Siamese Twins Chang and Eng Bunker, Surry County]	Vol. 17, No. 2, Summer 1998: 12-13
<b>Vestal, Alan</b>	
Cana, Davie County, N.C.	Vol. 12, No. 4, Fall 1993: 15
Carolina Female College	Vol. 8, No. 3, Fall 1989: 3
Dr. John F. Shaffner, Confederate Surgeon	Vol. 10, No. 3, Summer 1991: 12-14
<b>Wally, Darryl</b>	
Postal Markings of Mecklenburg County North Carolina, The	No. 14 (Vol. 4, No. 3), Jun. 1985: 2-18
<b>Walske, Steven C.</b>	
Blockade Run Mail Which Entered via North Carolina	Vol. 24, No. 3, Summer 2005: 3-7
<b>Warren, Daniel C.</b>	
Confederate North Carolina Trans-Mississippi Express Cover, A	Vol. 17, No. 3, Fall 1998: 10
Confederate States Two Cent Green Covers from North Carolina	Vol. 17, No. 2, Summer 1998: 14-15
<b>Warren, Daniel C.; Crumbley, Tony L.</b>	
20 Cent Green Confederate Stamp Used from North Carolina, The	Vol. 17, No. 1, Spring 1998: 12-15
<b>Weiner, Richard D.</b>	
Early Days of Davidson College: A Student Writes Home	Vol. 21, No. 3, Fall 2002: 11-13
Teacher Travels to NC – 1835, A	Vol. 28, No. 2, Spring 2009: 9-10
<b>Wetmore, Ruth Y.</b>	
North Carolina Post Office Names with Indian Connections	Vol. 11, No. 4, Fall 1992: 3-13
Transylvania County Post Offices and Officials	Vol. 9, No. 1, Winter 1990: 3-14
<b>White, Jo Linn</b>	
Confederate Prison at Salisbury, The [from Rowan County Register]	Vol. 19, No. 3, Fall 2000: 3
<b>Wicker, Milton G.</b>	
Doane Cancel Additions and Corrections	Vol. 7, No. 2, Spring 1988: 13-15
Doane Cancellation Update	No. 8 (Vol. 3, No. 1), Feb. 1984: 5-6
Doane Numeral Handstamp Cancels of North Carolina	No. 6 (Vol. 2, No. 3), Aug. 1983: 2-6
First Rural Free Delivery Route in North Carolina	No. 13 (Vol. 4, No. 2), Apr. 1985: 1
Flag Cancellation	No. 9 (Vol. 3, No. 2), Apr. 1984: 3-7
Quaker Postmarks of North Carolina	No. 10 (Vol. 3, No. 3), Aug. 1984: 2-5
Updated Listing of North Carolina Doane Cancels, An	Vol. 5, No. 1, Jan. 1986: 3-10
<b>Wicker, Milton; Tilles, Harvey; Schoolmeester, Ken</b>	
Postal Markings of Greensboro, N.C.	Vol. 6, No. 2, Spring 1987: 3-19
<b>Wickert, W. M.</b>	
Dismal Swamp Canal Mail – A Mystery	Vol. 7, No. 2, Spring 1988: 7-10
<b>Wiley, Mary C.</b>	
Twin City Postal System Began in Salem in 1792 [from <i>Twin City Sentinel</i> , May 4, 1953]	Vol. 5, No. 2, Apr. 1986: 7-8

**Williams, L. N.**

N. C. Uniquity is Worth \$30,000 [Franklin, N.C. Postmaster Provisional, from *Stamp Collector*, Apr. 25, 1992]

Vol. 11, No. 3, Summer 1992: 10

**Winter, Richard F.**

Beautiful North Carolina Confederate Covers - All Fake!  
Charleston, S.C. to Belgium via Wilmington & Raleigh Railroad  
Courthouse and Post Office Mysteries, #1 [Snow Hill]  
Courthouse and Post Office Mysteries, #2 [Scuppernon]  
Cowansville to Germany  
Elmwood Post Office Postmark Book  
England to Wilmington  
First Post Road into Hyde County, The  
Hot Springs, North Carolina – A World War I Internment Camp  
Leo Postmark Update  
Margie Pfund Memorial Postmark Museum, The  
“New Asheville Marking – Type 3.5” – Revisited  
New North Carolina Postmark Catalog  
New SHIP Marking of Plymouth  
North Carolina Postal History Project Underway [State Archives]  
Pre-1800 North Carolina Postmarks  
Ridgeway to London  
Rocky Mount to Paris  
Salisbury to Houston, Republic of Texas  
Salisbury to Leipzig, Saxony  
Siskin North Carolina Covers at Auction [Colonial, Early U.S.]  
Solution to Scuppernon Mystery  
Steamship 20 Cent Cover Re-directed from Swansboro  
Stroupe, Vernon S., Jr. (death notice)  
William Hooper Letter, The  
Wilmington to London  
Wilmington to Paris, France  
Wilmington & Raleigh Railroad Steamboats

Vol. 21, No. 1, Spring 2002: 3-6  
Vol. 16, No. 1, Spring 1997: 5-7  
Vol. 24, No. 1, Winter 2004-05: 14  
Vol. 24, No. 1, Winter 2004-5: 15  
Vol. 17, No. 1, Spring 1998: 10-11  
Vol. 26, No. 2, Spring 2007: 12-14  
Vol. 17, No. 3, Fall 1998: 11-13  
Vol. 21, No. 2, Summer 2002: 11-15  
Vol. 27, No. 1, Winter 2008: 4-13  
Vol. 28, No. 4, Fall 2009: 13-14  
Vol. 27, No. 3, Summer 2008: 14-15  
Vol. 26, No. 2, Spring 2007: 15  
Vol. 26, No. 1, Winter 2006-07: 12-13  
Vol. 26, No. 3, Summer 2007: 14-15  
Vol. 23, no. 2, Summer 2004: 12  
Vol. 24, No. 2, Spring 2005: 7-11  
Vol. 16, No. 3, Fall 1997: 11-13  
Vol. 18, No. 1, Summer 1999: 4-6  
Vol. 18, No.3, Winter 2000: 5-6  
Vol. 24, No. 2, Spring 2005: 5-6  
Vol. 25, No. 1, Winter 2005-06: 14  
Vol. 24, No. 2, Spring 2005: 12-13  
Vol. 26, No. 1, Winter 2006-07: 6-11  
Vol. 25, No. 2, Spring 2006: 11  
Vol. 21, No. 2, Summer 2002: 3-5  
Vol. 16, No. 4, Winter 1997-98: 3-5  
Vol. 16, No. 2, Summer 1997: 13-15  
Vol. 23, No. 3, Fall 2004: 9-13

**Worrell, W. Marvin, Jr.**

Post Offices of Maney's Neck Township, Hertford County, The

Vol. 5, No. 4, Oct. 1986: 7-9

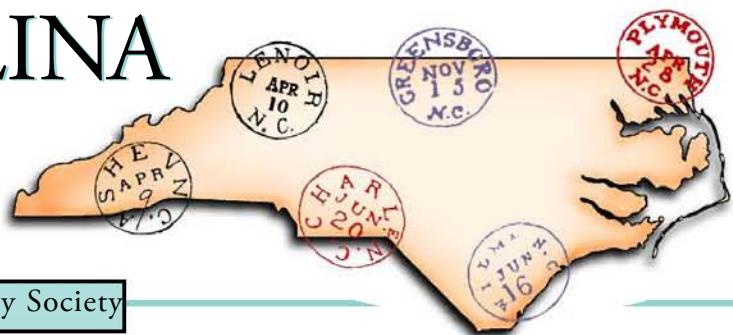
**Zamplas, Pete**

Davidson River Post Office and Train Station are Remembered  
[from *Transylvania Times*, Nov. 7, 1988] ■

Vol. 8, No. 1, Winter 1989: 10-11

# NORTH CAROLINA POSTAL HISTORIAN

The Journal of North Carolina Postal History Society



# Subject Index

## By Maurice M. Bursey

*North Carolina Postal History Society Newsletter* (Issues 1-15)  
*NCPHS Newsletter* (Issues 16-49, Volume 5, No. 1 – Volume 13, No. 2)  
*North Carolina Postal Historian*, Issues 50 – present, Volume 13, No. 3, - present)

Only keywords are supplied in this index. Citations are to “volume/issue:pages.” For the earliest issues, for which volume numbers were assigned retroactively, a concordance between volume/issue numbers in this index and the whole numbers originally assigned follows:

1/1*	No. 1	2/2*	No. 5	3/2*	No. 9	4/2*	No. 13
1/2*	No. 2	2/3*	No. 6	3/3*	No. 10	4/3*	No. 14
1/3*	No. 3	2/4*	No. 7	3/4*	No. 11	4/4*	No. 15
2/1*	No. 4	3/1*	No. 8*	4/1*	No. 12		

In this index, the asterisk after a volume/number reference calls attention to either of two problems. First, for Vols. 1 through 4, the absence of these numbers in the original version (instead, the user must find the whole number as given in the preceding short table, noting that whole No. 8 was labeled No. 7 in error; and second, for later issues, corrected volume/number references are given if the original was misnumbered. The concordance of these appears before the Author Index. Full titles, full names of authors, and references to dates of issue are given in the Author Index.

### Advertising Covers

Census (Baum)	26/2:4-11
Medical remedies (Roughton)	20/4:6-8
Tobacco (Crumbley)	28/1: 3-8

*Petitions for Pardons, 1865-67*: Koonts 15/1:2

(Stroupe)

*Self-Sufficiency at All Costs*: Ridgway 8/2:4

(Cohn)

### African-American

James City (Crumbley)	15/3: 3-4
Method (Crumbley)	20/3: 10-11
Oberlin (Crumbley)	30/3: 10-11
Postmasters (Justesen)	25/2:3-11

### Cachets

Boone, Richard P., maker (Crumbley)	19/1:8-11
Mendenhall, Shumaker, makers (Bursey)	28/4:8-11
Raft Swamp anniversary (Doanes)	15/2:13-14
Swansboro (Herring)	6/2:23

### Air Mail

A. C. Roessler (Crumbley)	22/3: 11-12
Airport dedications (Crumbley)	22/1: 3-10
All-North Carolina airmail week, 1937 (Crumbley)	22/4:3-19
All North Carolina air mail flight, 1937 (Crumbley)	16/4:6-10
Charlotte air mail facilities (Crumbley)	22/3: 16
Contract Air Mail first flights (Crumbley)	22/2: 3-17
Crash mail (Crumbley)	22/2: 17
First air mail flight in NC, Wilmington (O'Sullivan)	5/4:3-5
First flights, contract (Crumbley)	22/2:3-17
Flights, official (Crumbley)	22/3:14-15
History (Crumbley)	2/1*:1-3
National air mail week, 1938 (Crumbley)	4/2*:5-6
Wright Brothers' first flight, reporting attempts (Gallico)	22/3:13
Wright Pylon Dedication (Crumbley)	22/4:21

### Cancellations

1930 type “E” 4-bar (Crumbley)	14/4:3-8
Bartonsville (Crumbley)	20/2:3-5
Chapel Hill, 1794, type 0.5 (Ed.)	20/3: 3
Charlotte (Crumbley)	3/4*:1-10
Charlotte, 1897 tractor tire (Crumbley)	10/2*:8-11
Doane (Crumbley)	2/2*:2-3
Doane (Wicker)	2/3*:2-6
Doane additions & corrections (Wicker)	7/2:13-15
Doane update (Crumbley)	15/2:7-12
Doane update (Wicker)	3/1*:5-6
Doane update(Wicker)	5/1:3-10
Doanes online (Crumbley)	24/2:14-15
Doremus (Crumbley)	2/4*:6-7
Elmwood post office postmark book (Winter)	26/2:12-14
Embossed (Crumbley)	15/3:10-11
Fancy, census (Crumbley)	11/3:7-9
Fancy, Charlotte (Crumbley)	8/2:4
Fancy, Patterson (Crumbley)	11/3: 5
Fancy, Southport (Crumbley)	6/4:13
Flag (Wicker)	3/2*:3-7

### Book Reviews

<i>Dirty Ankle Is Far From Bath</i> : King (Crumbley)	14/2:15
---	---------

Mount Tirzah, 1796 (Ed.)	10/3*:15	2¢ green issue (Crumbly)	14/4:14
Murfreesborough, 1808 (Ed.)	13/4:16	3¢ rate? (Crumbly)	18/3:9-10
Philatelic truck FDC (Crumbly)	3/1*:3-5	7, largest known multiple (Crumbly)	16/4:3
Post offices opened during Doane period (Boubelik)	11/2:8-10	20¢ green cover (Warren, Crumbly)	17/1:12-15
Postmark book, Elmwood post office (Winter)	26/2:12-14	Addressed to Swann's Station (Homesly)	10/4:14-15
Postmark catalog, new (Winter)	26/1:12-13	Advertising census (Baum)	26/2:4-11
Postmark museum, Margie Pfund memorial (Winter)	27/3:14-15	Blockade mourning cover, frameline (Monroe)	21/4:11
Pre-1800 postmarks (Winter)	24/2:7-11	Bonitz patriotic envelopes (Bursey)	28/1:3-8, Addendum
Quaker	3/3*:2-5	Carolina City provisional (Crumbly)	5/4:10-14
Raleigh, Type 3, size (Ed.)	20/3 3	Confederate Post Office Department letters (Stets)	16/1:7
Salem (Crumbly)	5/2:3-5	Dunn's Rock (Ed.)	7/3:14
<b>Civil War</b>		Dunnsville (Crumbly)	27/3:3
Magnus envelopes related to North Carolina (Bursey)	27/4:3-10	Fantasies (Crumbly)	13/4:4
Stokes County peach brandy making (S. Troutman)	7/3:13	Flat Rock (Crumbly)	20/2:12-15
<b>College Covers</b>		Frameline (Lohr)	25/1:8
Carolina Female College (Vestal)	8/3:3	Frameline uses (Crumbly)	19/1:7
Chowan College (Crumbly, McDowell)	20/3:5-8	Frameline, blockade, mourning (Monroe)	21/4:11
Chowan Female Institute (Crumbly, McDowell)	20/3:5-8	Independent statehood cover (Monroe)	21/4:11
Davidson College (Crumbly)	10/4:2	Largest known multiple, 7 (Crumbly)	16/4:3
Davidson College, illustrated (Ed.)	23/3:15	Lenoir provisional (Crumbly)	7/3:3-7
Davison College, student letter (Weiner)	21/3:12-13	"Lowenburg & Bro." patriotic envelopes, Beaufort (Bursey)	28/2:11-14
Davis School, military boarding (Crumbly)	24/3:8-9	Mourning, blockade, frameline (Monroe)	21/4:11
Glen Anna Female Seminary (Crumbly)	15/3:10-11	Oxford (Mayes, S. Troutman)	12/3:3-14
Hillsborough Military Academy (Crumbly)	23/1:3-9	Patterson fancy cancels (Crumbly)	11/3:5
Horner & Horner School (Ed.)	12/3:15	Raleigh 68XU1, new variety (Crumbly)	27/3:11-13
Horner's School (S. Troutman, Mayes)	12/4:5-6	Raleigh bayonet factory (Perkinson, Crumbly)	21/1:11-12
North Carolina Institution, Deaf, Dumb, Blind (Crumbly)	28/4:3-7	Raleigh/Saxapahaw turned cover (Holt)	21/4:7-8
University of North Carolina (Holt)	17/4:3-11	Roanoke Island (Jaronski)	4/2*:7-9
Wake Forest College (Crumbly)	20/4:3-5	Roanoke Island (Jaronski)	7/3:10-12
Wesleyan Female Academy (Crumbly)	20/2:12-15	Roanoke Island, Confederate letter after battle (S. Troutman)	25/4:10-13
Murfreesborough (Crumbly)		Railroads and mail (Crumbly)	16/1:8-12
Wesleyan Female Institute, Murfreesboro (Crumbly, McDowell)	20/3:5-8	Salem (Crumbly)	5/2:3-5
<b>Colonial</b>		Salisbury, prison (Crumbly)	19/3:4-6
Earliest, 1759 (Crumbly)	10/2*:6-7	Salisbury, prison (Harrison)	19/3:7-13
Hugh Finlay journal, 1773 (Ed.)	9/4:9-15	Salisbury, prison (White)	19/3:3
New Bern, 1770 cover (Ed.)	20/3:3-4	Saxapahaw turned cover (Holt)	21/4:7-8
Pre-1800 postmarks (Winter)	24/2:7-11	Secession date (Crumbly)	15/1:12-13
Siskin auction (Winter)	25/1:14	Shaffner, John T., Surgeon (Vestal)	10/1:12-14
Wilmington, 1769, 1772 covers (Ed.)	20/3:3-4	Statesville covers (Bush)	7/3:8-9
<b>Confederates</b>		Trans-Mississippi express cover (Warren)	17/3:10
2¢ green covers (Crumbly)	14/2:3-6	Unique provisionals (Crumbly)	10/2*:8-11
2¢ green covers (Warren)	17/2:14-15	"Whitaker, Wilmington" patriotic envelopes (Bursey)	28/2:4-8
		White Road (B. Green, M. Green)	10/2:13
		Wilmington 7- bar killer on 8 (Crumbly)	11/4*:6
		Wilson, express company label (Crumbly)	9/2:6-8

---

**Early (1776-1846)**

6¼¢ rate (Crumbley)	18/1:6-10
6¼¢ rate (Crumbley)	27/2:12
Abbotts Creek, paid 3 (B. Green)	9/2:3
Bath, 1777 (Crumbley)	25/1:3-7
Bill of Rights copy (Crumbley)	23/2:13-15
Chapel Hill, 1794, Type 0.5 marking (Ed.)	20/3:3
Chapel Hill, 1827 (Crumbley)	5/4:17
Davidson College, student letter, 1837 (Weiner)	21/3:11-13
Declaration of Independence copy [title error] (Crumbley)	23/2:13-15
First Postmistress (Crumbley)	28/2:14-15
Greensboro, 2 postmasters, 1811 (Stets)	14/1:6
Hazard, Ebenezer, journal, 1777-1778 (Johnston)	10/1:4-13
Hooper, William, letter, 1776	21/2:3-5
Hyde County, first post road into, 1800 (Winter)	21/2:11-15
Independent State Periods, NC, TN	15/2:12
Jamestown, paid 1 (B. Green)	9/2:3
Journal, Ebenezer Hazard, 1777-1778 (Johnston)	10/1:4-13
Mount Tirzah, 1796 cover (Ed.)	10/3:15
Murfreesboro cover, 1808 (Ed.)	13/4:16
Newbern post office advertisement, 1797 (Ed.)	20/3:9
Newbern roulettes, 1851 Issue (Ed.)	15/1:10-11
North Carolina, 1789-1795, part 1 (Hecht)	8/1:12-19
North Carolina, 1789-1795, part 2 (Hecht)	8/3:4-12
North Carolina, 1789-1795, epilogue (Stets)	8/3:12-14
Oxford (Mayes, S. Troutman)	12/3:3-14
Oxford (Stets)	12/4:3-4
Post Roads, 1820 (Tilles)	3/3*:5-6
Pre-1800 postmarks (Winter)	24/2:7-11
Salem, 1796 (Ed.)	6/2:24
Salem, 1833, new fancy cancel (Crumbley)	5/2:5
Scotland Neck (McDowell)	7/4:3-8
Scuppernong, 1803, early cover, mystery (Winter)	24/1:15
Scuppernong, solution to mystery (Winter)	24/2:12-13
Snow Hill, 1803, earliest known cover, mystery (Winter)	24/1:14
Siskin auction (Winter)	25/1:14
Teacher travels, 1835 (Weiner)	28/2:9-10

**Early 20th Century (1901-1950)**

Camp Sutton, POW camp (Crumbley)	18/2:9-11
Coal mining disaster, 1925 (Otterbourg)	13/2:3-8
First air mail flight in North Carolina (O'Sullivan)	5/4:3-5
German POW Camp, 1944-46 (Crumbley)	18/2:9-11

Post cards and rates (Stets)	15/4:3-4
Spencer (W. Harter, M. Harter)	6/3:13-15
Wright brothers, 25th anniversary (Stroupe)	22/3:3-4
	22/3:3-4

**Early 21st Century (2001- )**

Candidate post offices near Charlotte for discontinuance (Stroupe)	23/1:10
Current postal history (Crumbley)	26/1:3-5
Unimproved mail delivery (Brown)	24/3:15

**Express**

Confederate company label (Crumbley)	9/2:6-8
Mail, 1836-1839 (Crumbley)	17/2:3-7

**Fakes**

Confederate fake covers (Winter)	21/1:3-6
Confederate fantasies (Crumbley)	13/4:4
Greensboro Paid 10 patriotic cover (Stroupe)	13/4:11
U.S.S. Asheville cover (Crumbley)	19/1:3

**Indexes**

1982-1997 (Ed.)	15/4:12-15
1982-2001 (Ed.)	20/4:14-19
Postal history bibliography (Crumbley)	4/1*:5-9
Postmaster finder - postal history database (Ed.)	20/4:8

**Later 19th Century (1865-1900)**

1869 issue (Crumbley)	15/1:3-9
1869 update (Richardson)	26/4:12-13
Davis School (Crumbley)	24/3:8-9
Fort Defiance (Lohr)	11/2:3-7
Free City Delivery (Ertzberger)	4/2*:3-5
Fraud Victim, Greensboro, 1880 (S. Troutman, A. Troutman)	10/1:13
Graham (Holt)	20/3:7-9
Lenoir family correspondence (Lohr)	11/2:3-7
Oxford (Mayes, S. Troutman)	12/3:3-14
Raleigh, early reconstruction letter (Ed.)	19/3:14-15
Raleigh, early reconstruction letter (Crumbley)	20/2:8-10
Reopening post offices, 1865-70 (Stanton)	6/3:3-11
RFD, first (Wicker)	4/2*:1
RFD, first, China Grove (Lasley)	4/2*:1-3
Rural Mail Service (Arthur)	16/2:3-4
Scotland Neck (McDowell)	7/4:3-8
Unimproved mail delivery (Brown)	24/3:5
Warren Plains, 1895 advertisement (Ed.)	21/4:15

**Later 20th Century (1951-2000)**

Bicentennial of statehood cancels (Tilles)	26/3:8-12
Greensboro on a shoestring (Sparks)	6/2:21-22
Kennedy FDC (Scheuer)	11/3:14-15
North Carolina Museum of Art painting, 1993 Christmas stamp (Ed.)	11/5*:15
Postal history exhibit opens (Ed.)	18/1:3-4
Postal Service sponsors 1992	16/4:12-13



Olympic Games (Estus)		Jaronski, Stefan T.	26/2:3,14
Purple Machine Cancels (Crumbly)	20/1:9-11	McDowell, Harry L.	22/4:20
Sprayed-on postmarks (S. Troutman)	12/2:12-13	Perkinson, Phillip	26/3:3,16
Statehood bicentennial cancels (Tilles)	26/3:8-12	Roughton, Jerry R.	26/4:3
"Unofficial" self-inking postmarkers (Stets)	7/2:3-6	Sapperstein, Perry M.	16/1:2
<b>Mechanization</b>		Scott, George	7/1:19
Industrial revolution, part 1 (Crumbly)	21/4:3-7	Stroupe, Vernon S., Jr.	25/2:11
Industrial revolution, part 2 (Crumbly)	22/1:11-17	Stroupe, Vernon S., Jr.	25/3*:3
<b>Military</b>		Tilles, Dr. Harvey G.	26/1:3
Camp Davis (S. Troutman)	11/5:14-15	Wall, Phillip	27/2:3
Camp Hoffman (Nelson)	18/2:12-13	Weiner, Richard D.	28/1:9
Camp Sutton POW camp (Crumbly)	18/2:9-11	Wicker, Milton G.	8/1:2
Encyclopedia, part 2 (Crumbly)	12/2:3-8	<b>People</b>	
Fayetteville, arsenal/armory (Hall)	28/3:9-14	Allen family, Tally Ho (S. Troutman)	11/2:13
Fort Johnston (S. Troutman)	24/3:11-12	Bunker, Chang & Eng (Venable)	17/2:12-13
German POW camp, 1944-1946	18/2:9-11	Confederate surgeon Shaffner (Vestal)	10/3:12-14
(Crumbly)		Durants of Durant's Neck (S. Troutman)	26/3:7
Hot Springs World War I internment	27/1:4-13	First federally appointed woman	25/1:13
camp (Winter)		postmaster (Stroupe)	
Raleigh bayonet factory	21/1:11-12	First postmistress (Crumbly)	28/2:14-15
(Perkinson, Crumbly)		Fraud victim, Greensboro, 1880	10/1:13
<b>Mourning Covers</b>		(S. Troutman, A. Troutman)	
Blockade mourning cover, frameline	21/4:11	Griffin, Luther S. (Griffin)	7/1:13-14
(Monroe)		Hedrick, Benjamin Sherwood (Bursey)	27/3:4-10
Mourning covers (Crumbly)	23/3:3-8	Henderson, John Steele (Arthur)	16/2: 3-4
<b>Naval</b>		Hooper, William (Winter)	21/2:3-5
4 U.S.S. Raleighs (Crumbly)	18/2:3-8	Johnston, James C. (Schoolmeester)	6/1:10-11
Blockade mail through Wilmington	24/3:3-7	Keehn, O. A. (Crumbly)	5/2:3-5
(Walske)		Lenoir family (Lohr)	11/2:3-7
Dismal Swamp Canal mail (Wickert)	7/2:7-10	MacRae, Duncan, Fayetteville	25/1:10-11
England to Wilmington (Winter)	17/3:11-13	postmaster (Roughton)	
Fast freight from Baltimore through	25/1:9	Pfund, Margie, postmark museum (Winter)	27/3:14-15
Wilmington (S. Troutman)		Shaffner, Dr. John F. (Vestal)	10/3:12-14
Fighting ships called "North Carolina"	14/3:3-13	Siamese twins (Venable)	17/2:12-13
(Crumbly)		Spencer, postmasters (Stout)	6/4:12
Lightship service (S. Troutman)	10/1:3-4	Steamship 20 cent cover, redirected	16/1:6-11
North Carolina ship names (Crumbly)	19/2:3-15	from Swansboro (Winter)	
Phebe (S. Troutman)	17/3:6-9	Stroupe, Vernon S., Jr., collection	25/3:3-15
Steamship 20 marking, redirected from	26/1:6-11	sampler (Crumbly)	
Swansboro (Winter)		Teacher, 1835 (Weiner)	28/2:9-10
U.S.S. Asheville fake (Crumbly)	19/1:3	Transylvania County post office officials	9/1:3-14
Wilmington & Fayetteville river route	10/4:19	(Wetmore)	
marking (Homesly)		<b>Postal Notes</b>	
Wilmington & Raleigh Railroad	23/3:9-13	Company Shops/Burlington (Ed.)	19/1:4-6
steamboats (Winter)		<b>Post Offices</b>	
<b>Obituaries, Death Notices, &amp; Biographical Sketches</b>		Aquone (Scott)	5/3:14
Allen, John	28/2:3	Davidson River (Zamplas)	8/1:10-11
Caldwell, Jean B.	24/4:15	First site survey submitted (Stroupe)	9/3:7-9
Crumbly, Tony L.	27/1:3,16	Grandy (Schoolmeester)	5/3:14-16
Harper, William	9/4:2	Grimshawes (Ed.)	4/4*:14
Harris, James P.	15/2:2	Hertford (Schoolmeester)	5/3:14-16
Holt, W. Clary	22/4:20	Indian connected names (Wetmore)	11/4:3-13
Hunt, Robert H.	21/3:12	Jarvisburg (Schoolmeester)	5/3:14-16

Natural Wells (Roughton)	16/2:5	Norfolk & Western, Ashe County (Hensley)	15/3:5-7
Odd names (Goerch)	9/3:10-12	Petersburg & Roanoke Railroad (Ed.)	7/4:14
On post cards (Crumbly)	25/1:14-15	Pre-Civil War Railroads (S. Troutman)	10/4:3-18
Puella (Sherrill)	14/1:14-15	Railroads and mail (Crumbly)	16/1:8-12
Raft Swamp challenge (Stroupe)	8/2:12	Raleigh & Gaston, slow mail (Stroupe)	6/4:10
Raft Swamp, oldest building? (Doares)	8/2:8-11	Scuppernong (Winter)	24/1:15
Raft Swamp, time warp (Stroupe)	8/2:11	Snow Hill (Winter)	24/1:14
Salvo (Leland)	7/4:12-13	Statesville Line (Crumbly)	10/4:2
Salvo to reopen? (Ed.)	12/4*:13	Tweetsie (S. Troutman)	15/2:15
Spencer (W. Harter, M. Harter)	6/3:13-15	Virginia Creeper (Hensley)	15/3:5-7
Transylvania County (Wetmore)	9/1:3-14	Wilmington, Charlotte & Rutherford Railroad (S. Troutman)	16/1:13-14
Wendell site survey (Mattox)	11/5:13	Wilmington & Manchester Railroad (S. Troutman)	24/3:13
<b>Precancels</b>		Wilmington & Raleigh Railroad (Crumbly)	28/1:11-15
Overview (Postlewait)	8/2:5-7	Wilmington & Raleigh Railroad, cover, Charleston to Paris (Winter)	16/1:5-7
Roessler, 650 (Crumbly)	22/4:20	Wilmington & Raleigh Railroad Steamboats (Winter)	23/3:9-13
<b>Pre-Civil War (1847-1860)</b>		Wilmington & Rutherfordton RPO (S. Troutman)	14/4:15
1847 issue (Richardson)	16/3:3-10	Wilson & Fayetteville Railroad (S. Troutman)	23/2:15
1851 issue delivered, July 1851 (Richardson, Schoolmeester)	9/3:3-5	<b>Ration Stamps</b>	
Newbern roulettes, 1851 issue (Ed.)	15/1:10-11	World War II (Crumbly)	20/1:5-8
New Bern roulettes (Hulme)	15/1:10	<b>Revenue Stamps</b>	
Oxford (Mayes, S. Troutman)	12/3:3-14	First federal issue (Crumbly)	12/4*:8-10
Raleigh type 3 CDS, size (Ed.)	20/3:3	Hunting and fishing (McRee)	6/4:6-9
Scotland Neck (McDowell)	7/4:3-8	Hunting and fishing, 1986-1988 (McRee)	9/2:8-11
Scott 1, 2; quantities shipped, 1848-1851 (Ed.)	1/2*:2	Hunting and fishing, 1988-1991 (McRee)	11/5:8-12
Shallotte, 1858 provisional (Crumbly)	10/2*:8-11	Sales tax coupons (S. Troutman)	25/2:12-13
Warrenton cover used as notepad (Sanford)	12/2:11	<b>Towns and Markings</b>	
<b>Railroads, Highways, and Markings</b>		7-1-71 FDCs (Crumbly)	17/3:14-15
Atlantic & East Carolina Railroad (S. Troutman)	18/3:7	Abbotts Creek paid 3 (B. Green)	9/2:3
Atlantic, Tennessee & Ohio Railroad (Crumbly)	10/4:2	Abshers (S. Troutman)	11/3:11-13
Atlantic, Tennessee & Ohio Cover (S. Troutman)	26/3:13	Agate (Worrell)	5/4:7-9
Beaufort & Goldsboro RPO (S. Troutman)	18/3:7	Akako (S. Troutman)	11/5:3-7
Boone & Johnson City (S. Troutman)	15/2:15	Asheville (Stroupe, Crumbly)	24/4:3-8
Clinchfield Railroad (S. Troutman)	15/2:5-7	Asheville, new, type 3.5 (Stroupe)	24/4:9
Confederate mails (Crumbly)	16/1:8-12	Asheville, new, type 3.5, comments (Winter)	26/2:15
Dante & Spartanburg RPO (S. Troutman)	15/2:5-7	Apex (Crumbly)	20/4:3-5
Fourth railroad over Blue Ridge (S. Troutman)	15/2:5-7	Axtell (Perkinson)	18/3:11
Goldsboro & Morehead City agent marking (S. Troutman)	26/4:14-15	Bairds Forge (S. Troutman, Crumbly)	15/4:4-8
Highway Post Offices (Tilles)	3/1*:11-13	Bartonsville (Worrell)	5/4:7-9
Individual railroad clerk markings (S. Troutman)	20/3:13-14	Bath, Dirty Ankle (Crumbly)	14/2:15
Last steam railroad (Hensley)	15/3:5-7	Bath (Crumbly)	25/1:3-7
Lenoir & Lancaster RPO (S. Troutman)	24/3:10-11	Bear Poplar (Crumbly)	16/1:5-6
Mackey Ferry & Belhaven RPO (S. Troutman)	18/3:7	Belvidere (S. Troutman)	16/4:15
Norfolk & Raleigh RPO (S. Troutman)	18/3:7	Bicentennial of Statehood Cancels (Tilles)	26/3:8-12
		Black Cities of Wake (Crumbly)	20/3:10-11
		Blue Ridge Rural Station (Crumbly)	16/3:13

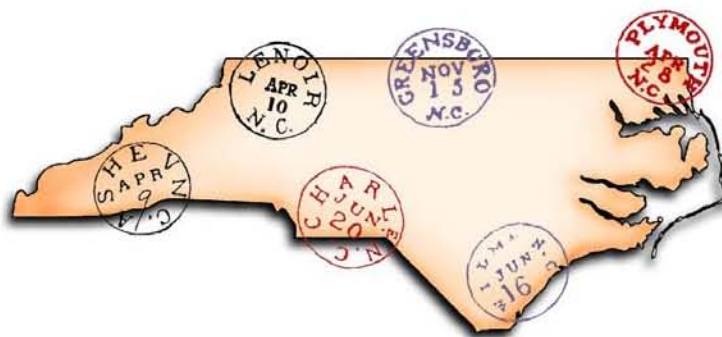
Burlington (Bolden)	13/4:8-9	Fancy Cancels (Schoolmeester)	8/1:3-9
Camp Greene (Crumbley)	12/2:9-10	Fayetteville, arsenal/armory (Hall)	28/3:9-14
Camp Sutton, POW camp (Crumbley)	18/2:9-11	Fayetteville, D. MacRae (Roughton)	25/1:10-11
Cana (Vestal)	12/4:15	Fayetteville paid, oval sunburst (Stroupe)	4/2*: 9-10
Carolina City provisional (Crumbley)	5/4:10-14	Flat Rock (Crumbley)	20/2:12-15
Cary (Crumbley)	20/4:3-5	Forsyth County, 1841-1986 (Ertzberger)	5/2:9-20
Chapel Hill, 1827 (Crumbley)	5/4:14	Fort Defiance (Lohr)	11/2:3-7
Chapel Hill provisional (Crumbley)	10/2*:8-11	Fort Johnston via Smithville (S. Troutman)	24/3:11-12
Chapel Hill provisional paid 5 (Holt)	21/1:15	Four Oaks to Dixie Hound Kennels (Crumbley)	18/3:3-4
Charleston SC to Belgium, Wilmington & Raleigh Railroad (Winter)	16/1:5-7	Franklin provisional (Crumbley)	10/2*:8-11
Charlotte (Crumbley)	3/4*:1-10	Franklin provisional (Williams)	11/3:10
Charlotte, 1859 visit (Crumbley)	10/1:14-15	Free City Delivery (Ertzberger)	4/2*:3-6
Charlotte, 1897 tractor tire (Crumbley)	10/2*:8-11	Gap Creek (S. Troutman)	16/4:14
Charlotte air mail facilities (Crumbley)	22/3:16	Gaston provisional (Crumbley)	10/2*:8-11
Charlotte, fancy (Crumbley)	8/2:4	German POW camp, 1944-1946 (Crumbley)	18/2:9-11
Cherry Lane (Crumbley)	17/2:8-11	Glen Anna Female Seminary, Taylorsville, embossed (Crumbley)	14/2:10-11
China Grove (Crumbley)	16/2:4-5	Gloucester (S. Troutman)	15/1:14-15
China Grove, first RFD (Lesley)	4/2*:1-3	Green Level (Crumbley)	20/4:3-5
Cobb's (S. Troutman)	23/3:13-14	Greensboro (Wicker, Tilles, Schoolmeester)	6/2:3-19
Como (Worrell)	5/4:7-9	Greensboro/Greensborough (Crumbley)	13/4:12-15
Company Shops (Bolden)	13/4:8-9	Greensboro provisional (Crumbley)	10/2*:8-11
Company Shops (Crumbley)	13/2: 9-15	Gold Hill (Crumbley)	16/1:14-15
Company Shops, Refugee Banking (Holt)	20/1:3-4	Granite (S. Troutman, Crumbley)	15/4:4-8
Concord (Crumbley, Stroupe)	9/4:3-8	Granite Falls (S. Troutman, Crumbley)	15/4:4-8
Confederate-only Dunnsville (Crumbley)	27:3:3	Hertford (Stroupe)	7/4:10-12
Corner cards as markings (Crumbley)	17/1:3-5	Hillsboro provisional (Crumbley)	10/2*:8-11
County cancels (Ertzberger)	4/4*:3-13	Hillsborough (Ed.)	14/1:16
Cowansville to Germany (Winter)	17/1:10-11	Hillsborough, update (Stroupe)	14/2:16
Dare County (Crumbley)	7/1:3-12	Hillsborough Military Academy (Crumbley)	23/1:3-9
Davidson College (Ed.)	23/3:15	Hog Island (Lupton)	15/4:9-10
Davidson College (Crumbley)	21/3:3-10	Holly Springs (Crumbley)	20/4:3-5
Davie County (Ertzberger)	5/3:3-13	Hotel fancy cancel, 1857 (Stroupe)	7/2:10
Diamond City (S. Troutman)	23/1:14	Hot Springs, World War I internment camp (Winter)	27/2:4-13
Dillsboro (Parris)	6/4:11-12	Houck (S. Troutman)	11/5:3-7
Dirty Ankle, Bath (Crumbley)	14/2:15	Hoylesville (S. Troutman)	12/2:14
Dockery (S. Troutman)	11/3:11-13	Hyde County, first post road (Winter)	21/2:11-15
Duck (S. Troutman)	21/4:13-14	James City (Crumbley)	15/3:3-4
Dunn's Rock (Ed.)	7/3:14	Jamestown (B. Green)	9/2:3
Dunnsville (Crumbley)	27/3:3	Jerusalem (Crumbley)	15/2:3-5
Durant's Neck (S. Troutman)	26/3:7	Jerusalem (S. Troutman)	7/2:11-12
Durham, tobacco (Crumbley)	21/1:7-10	Joynes (S. Troutman)	11/3:11-13
Dymond City (S. Troutman)	23/1:14	Kawana (Fricke)	11/2:14-15
Edenton straight-line (Stroupe)	11/5:14	Kill Devil Hills, postmaster alters history (S. Troutman)	22/3:5-10
Edgemont (S. Troutman)	11/5:3-7	Kittrell's Springs (Crumbley)	24/4:10-14
Elizabeth City (Stroupe)	6:1/12-14	Kitty Hawk, derivation of name (S. Troutman)	22/3:4
Elizabeth City (Stroupe)	7/4:10-12		
Elizabethtown (Stroupe)	7/4:10-12		
Elmwood Post Office postmark book (Winter)	26/2:12-14		
Embossed postmark (Crumbley)	14/2:10-11		
Engelhard (S. Troutman)	13/4:6-7		
Fallstown (Nelson)	18/2:15		

Lake Landing (S. Troutman)	14/1:12-13	Oxford, Horner's School (S. Troutman, Mayes)	12/4:5-6
Lenoir provisional (Crumbley)	7/3:3-7	Pamlico County (Crumbley)	23/2:3-10
Leo (Richardson)	8/2:3	Pamlico County (S. Troutman)	23/2:10-11
Leo, Update (Winter)	28/4:13-14	Pantego, 1829 (Ed.)	6/1:17-18
"Light House" (S. Troutman, A. Troutman)	9/2:4-6	Pantego to Tuscarora, RPO covers (S. Troutman)	18/3:7
Lillington to Dixie Hound Kennels (Crumbley)	18/3:3-4	Patterson fancy (Crumbley)	11/3:5
Lotta (Worrell)	5/4:7-9	Petersburg & Roanoke Rail Road, 1845 (Ed.)	7/4:14
Lovelady (S. Troutman, Crumbley)	15/4:4-8	Pierces Forge (S. Troutman, Crumbley)	15/4:4-8
Low Gap (S. Troutman)	26/4:11	Pine Bluff (Crumbley)	26/3:4-6
Lupton (Lupton)	15/4:9-10	Pine Hall, Rural Delivery Route No. 1 (Ed.)	5/1:12
Madison (Crumbley)	25/4:4-7	Plymouth (S. Troutman)	25/4:14
Madison, 166 years (Bokoski)	6/1:3-10	Plymouth, SHIP marking (Winter)	26/3:14-15
Mamie (S. Troutman)	19/1:15	Portsmouth (S. Troutman)	25/1:8-9
Maney's Neck Township (Worrell)	5/4:7-9	Portsmouth Island (Crumbley)	26/4:4-7
Manuscript markings (Tilles)	5/5:17	Postal history basics (Stroupe)	14/2:8-14
Margarettsville (S. Troutman)	10/3:10	Postal history basics, errors in (Stroupe)	14/3:14
Marking updates (Ed.)	20/4:2	Postal history project, State Archives (Winter)	23/2:12
Marshallberg (S. Troutman)	15/1:14-15	Postmark catalog (Winter)	26/1:12-13
Martindale (Crumbley)	12/4*:11	Postmarkers, "unofficial" self-inking (Stets)	7/2:3-6
Mashoes, sell out (Sharpe)	10/2:7	Postmarks or cinderellas? (Stroupe)	15/3:10-11
Mecklenburg County (Wally)	4/3*:2-18	Postmaster cancels (Ertzberger)	4/4*:3-13
Mecklenburg County RFD system (Ertzberger)	14/1:8-11	Purple Machine Cancels (Crumbley)	20/1:9-11
Method (Crumbley)	20/3:10-11	Raft Swamp (Doares)	15/2:13-14
Mica mining towns (S. Troutman)	16/4:14	Raft Swamp, National Preservation Award (Ed.)	10/2*:12
Military bases (Crumbley)	12/2:3-8	Raleigh (Stroupe)	7/4:10-12
Mortimer (S. Troutman)	11/5:3-7	Raleigh, new type, 18.5 (Stroupe)	25/1:12-13
Mount Gilead (S. Troutman)	15/4:11	Raleigh reconstruction letter (Ed.)	19/3:14-15
Mount Gilead (S. Troutman, Crumbley)	17/1:5-8	Raleigh, teacher travels, 1835 (Weiner)	28/2:9-10
Murfreesboro (Stroupe)	13/3:16	Riddicksville (Worrell)	5/4:7-9
Murfreesboro, Wesleyan Female Academy, Female Institute, Chowan College (Crumbley)	20/3:5-8	Ridgeway (S. Troutman)	13/3:15
Murphy, manuscript circular date stamp	12/4:12 (Stroupe)	Ridgeway to London (Winter)	16/3:11-13
Museum, Margie Pfund postmark	27/3:14-15	Roanoke Island, 1835, Elizabeth City CDS (Ed.)	7/1:20
Nags Head, 1846 (S. Troutman)	25/2:14-15	Roanoke Island, 1835 (S. Troutman)	7/2:15
Newbern, independent statehood cover (Monroe)	21/4:12	Robeson County (Crumbley, Wetmore)	21/1:13-14
New Berne or Newbern? (Stroupe)	13/4:5	Rocky Mount to Paris (Winter)	18/1:4-6
Newbern post office advertisement, 1797 (Ed.)	20/3:9 New	Rural Station, Blue Ridge (Crumbley)	16/3:13
Garden, Quakers (Ed.)	7/2:16	Rural Station Update (Rupert, McCord)	16/3:14-15
New Hill (Crumbley)	20/4:3-5	Rural Stations (Rupert, McCord)	16/2:6-12
New Lebanon (S. Troutman)	23/1:11-13	Salem, 1792 (Wiley)	5/2:7-8
Oberlin (Crumbley)	20/3:10-11	Salem, 1796 (Ed.)	6/2:24
Octagonal postmarks (Schoolmeester)	6/4:3-5	Salem, 1852-60, 1861-65 (Stroupe)	7/1:19
Ore Knob (Crumbley)	17/1:9	Salem, 1833, new fancy cancel (Crumbley)	5/2:5
Ore Knob (S. Troutman)	18/2:14	Salem, O. A. Keehln (Crumbley)	5/2:3-5
Oxford, 19th century (Mayes; S. Troutman)	12/3:3-14	Salisbury (Stroupe)	6/1:12-14
Oxford, 2 orphanages (Crumbley)	26/1:13-15	Salisbury, prison (Crumbley)	19/3:4-6
Oxford, Horner & Horner School (Ed.)	12/3:15	Salisbury, prison (Harrison)	19/3:7-13
		Salisbury provisional (Crumbley)	10/2*:8-11



Salisbury to Houston, Republic of Texas (Winter)	18/3:5-6	Wadesboro (Stroupe)	6/1:12-13
Salisbury to Leipzig, Saxony (Winter)	24/2:5-6	Wake County outside Raleigh (Crumbley)	20/4:3-5
Salvo to reopen? (Ed.)	12/4*:13	Wake Forest College (Crumbley)	20/4:3-5
Scotland Neck, 1797-1900 (McDowell)	7/4:3-8	Wanchese (S. Troutman)	26/4:8-10
Sandy Mush (S. Troutman)	20/3:12	Warren Plains, 1865 (Ed.)	8/1:20
Scuppernong (Winter)	24/2:12-13	Warrenton cover used as notepad (Sanford)	12/2:11
Self-inking postmarkers, "unofficial" (Stets)	7/2:3-6	Washington fancy cancel (S. Troutman)	13/3:15
Shallotte, 1858 provisional (Crumbley)	10/2*:8-11	Waterlily (S. Troutman)	15/3:8-9
Shipyard (S. Troutman)	25/1:12	Way Mail (Crumbley)	21/2:6-10
Siler City pseudo machine cancel (Homesly)	12/4:7	Wiles (S. Troutman)	11/3:3-4
Silver, Stanly County (Ertzberger)	3/3:1-2	Wilkesboro (Stroupe)	7/4:10-12
Smithfield, 200 years (Crumbley)	27/4:11-15	Wilmington, 7-bar killer on CSA 8 (Crumbley)	11/3:6
Smithville, Fort Johnston (S. Troutman)	24/3:11-12	Wilmington blockade cover (Crumbley)	20/2:10-12
Sneads Ferry (Troutman)	28/4:12-13	Wilmington, fast freight through (S. Troutman)	25/1:9
Sneedsboro (Crumbley)	14/1:4-5	Wilmington, first airmail flight, 1912 (O'Sullivan)	5/4:3-5
Snow Camp not in cyberspace (Brown)	24/3:14	Wilmington, blockade, frameline, mourning (Monroe)	21/4:11
Snow Hill, earliest known cover, 1803, mystery (Winter)	24/1:14	Wilmington, blockade mail through (Walske)	24/3:3-7
Soda Creek (S. Troutman)	16/4:14	Wilmington, hard times, 1865 (Ed.)	6/3:16
Sodom (S. Troutman)	15/3:9	Wilmington, largest known multiple, CSA 7 (Crumbley)	16/4:3
South Mills (S. Troutman)	23/11:11-13	Wilmington, lost stamps (Crumbley)	20/3:12-15
Southport, 1893 (Crumbley)	6/4:13	Wilmington to London (Winter)	16/4:3-5
Spencer (Stout)	6/4:12	Wilmington to Paris (Winter)	16/2:13-15
Springs of NC (Crumbley)	27/1:14-19	Wilmington, War of 1812 (Ed.)	6/4:4
Stanly County (Crumbley)	24/1:3-13	Wilson, express company label (Crumbley)	9/2:6-8
Stanly County, Silver (Ertzberger)	3/3:1-2	Wilson Creek Gorge, towns along (S. Troutman)	11/5:3-7
Star (Crumbley)	14/4:9-15	Winston-Salem (Wiley)	5/2:7-8
Statehood Bicentennial Cancels (Tilles)	26/3:8-12	Winston-Salem, postmaster's postmark (Crumbley)	23/1:15
Statesville (Stroupe)	6/1:12-14	Zevely handstamps (Mandel)	10/3:3-9
St. Lewis (S. Troutman)	21/4:3	<b>Union Occupation</b>	
St. Lewis (S. Troutman, A. Troutman)	9/3:6-7	6th New Hampshire (S. Troutman)	7/1:15-18
Straits (S. Troutman)	15/1:14-15	Covers (Bursey)	27/2:4-15
Swan Quarter (S. Troutman)	13/4:9-11	Fort Fisher, soldier letter (S. Troutman)	10/3:10-11
Swansboro (S. Troutman)	25/4:8-9	New Berne, contemporary accounts (Jaronski)	4/1*:1-2
Swansboro, redirected steamship cover (Winter)	26/1:6-11	New Berne, initial occupation (Jaronski)	4/1*:3-4
Tally Ho (S. Troutman)	11/2:11-13	Roanoke Island (Jaronski)	4/2*:7-9
Tally Ho, Allen family (S. Troutman)	11/2:13	Sherman's march (Crumbley)	17/3:3-5
Taylorville, embossed (Crumbley)	14/2:10-11	Zouaves (S. Troutman)	24/2:3-4
Thomasville, embossed (Crumbley)	15/3:10-11		
Thomasville, embossed (Stroupe)	15/3:10-11		
Trap Hill (Crumbley)	17/2:8-11		
Twin City postal system (Wiley)	5/2:7-8		
"Unofficial" self-inking postmarkers (Stets)	7/2:3-6		
Updates (Ed.)	20/3:2		
Vance County (Perkinson)	2/4*:2-5		
Vance County (Perkinson)	20/4:9-11		





North Carolina Postal History Society  
P.O. Box 681447  
Charlotte, NC 28216

---