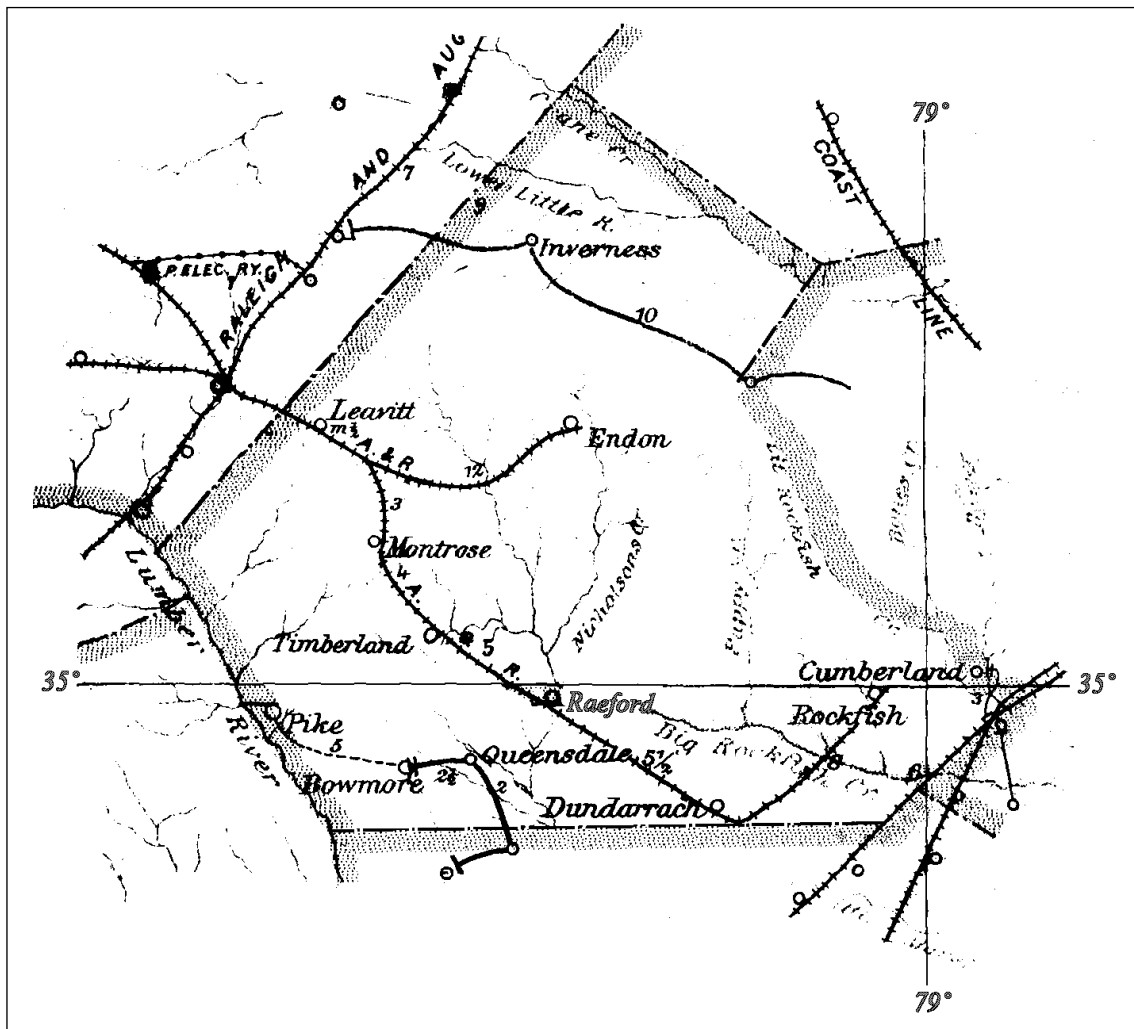
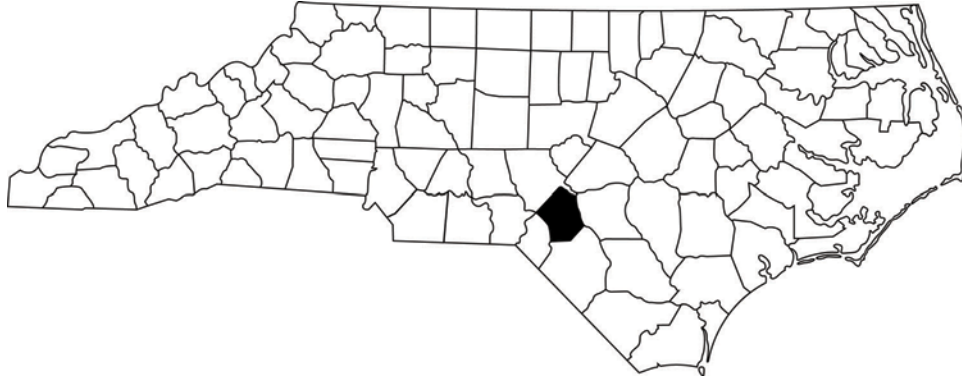


# HOKE COUNTY

Formed on 17 February 1911 from Cumberland and Robeson Counties

Number of Post Offices - 11  
Number with postmarks known - 8



## HOKE COUNTY

### Argyle, from Cumberland County

(Hoke)

Archie B. McFadyn            17 Feb 1911  
Discontinued                15 Aug 1918  
Mail to Manchester, Cumberland County

### Ashley Heights

(Hoke)

Duncan H. Johnson        3 Apr 1919  
Myrtie L. Johnson, Acting   20 Apr 1938  
Myrtie L. Johnson        23 May 1938  
Discontinued               31 May 1953  
Mail to Aberdeen, Moore County



Type 1  
32.5 mm Black  
1925 Type C1 4-Bar  
26 May 1932  
14 Dec 1935



Type 2  
33.5 mm Black  
1936 Type F/1 4-Bar  
30 May 1953  
31 May 1953

### Dundarrach, from Robeson County

(Hoke)

Luther A. McInnis        17 Feb 1911  
Alexander McMillan       2 May 1911  
James B. McKenzie, Acting   15 Sep 1923  
James B. McKenzie        29 Aug 1923  
Luther A. McInnis, Acting   14 Aug 1928  
Luther A. McInnis        8 Sep 1928  
Discontinued               30 Jun 1932  
Mail to Shannon, Robeson County

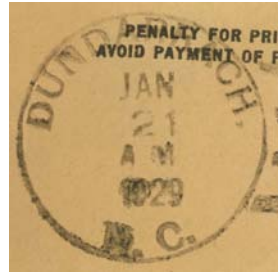


Type 1  
32.5 mm Black  
1910 Type B 4-Bar  
27 Jun 1913

## HOKE COUNTY

### Dundarrach (Cont.)

(Hoke)



Type 2  
33 mm Black  
1925 Type C/1 4-Bar  
21 Jan 1929

### Inverness, from Cumberland County

(Hoke)

John H. Priest            17 Feb 1911  
Discontinued            15 Nov 1912  
Mail to Manly, Moore County

### Leavitt, from Cumberland County

(Hoke)

George D. Sayer        17 Feb 1911  
Discontinued            15 Mar 1912  
Mail to Aberdeen, Moore County

### Lobelia, from Cumberland County

(Hoke)

Daniel McGill           17 Feb 1911  
John W. Smith           3 Sep 1912  
Discontinued            31 Mar 1919  
Mail to Vass, Moore County



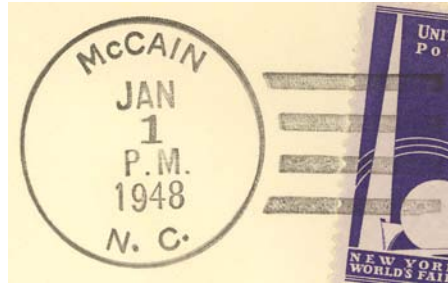
Type 1  
29 mm Black  
6 Jun 1907  
9 Mar 1912

## HOKE COUNTY

### McCain, name changed from Sanatorium

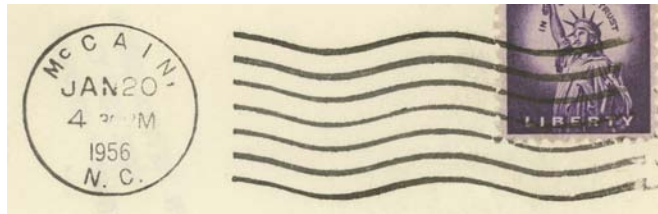
(Hoke)

Ernest B. Satterwhite	1 Jan 1948
Irene E. Isreal, Acting	23 Sep 1961
Eli Britton Jr. Officer-In-Charge	23 Jan 1976
Edna S. Williamson Officer-In-Charge	5 Nov 1976
Alvin T. Terry	13 Aug 1977
Edna S. Williamson Officer-In-Charge	30 Dec 1977
Mrs. Janice H. Mobley	15 Jul 1978
Cyrus B. Israel Officer-In-Charge	1 Oct 1982
Discontinued	17 Mar 1984

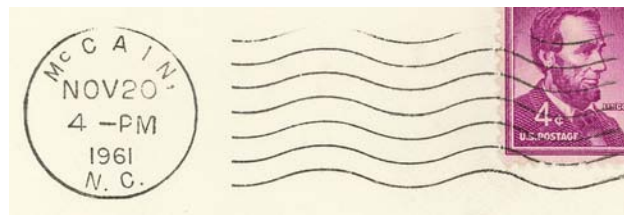


Type 1  
32.5 mm Black  
1936 Type F/1 4-Bar  
1 Jan 1948

Became Community Post Office of Raeford



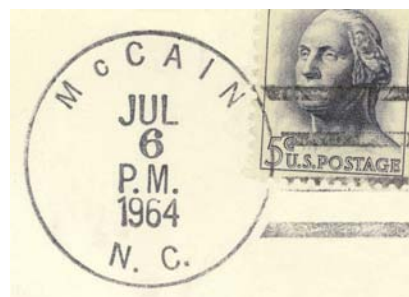
Type 2  
23 mm Black  
International Machine  
Type AT/S 2711  
5 Mar 1948  
20 Jan 1956



Type 3  
23 mm Black  
International Machine  
Type AT/S 2721  
23 Jan 1959  
20 Nov 1961



Type 4  
33 mm Black  
1936 Type F/1 4-Bar  
10 Jan 1963

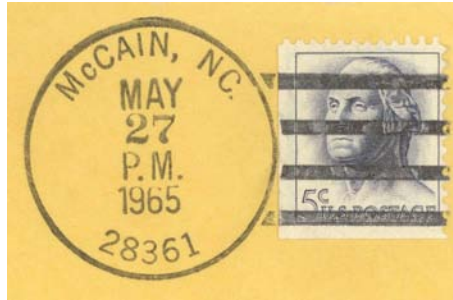


Type 5  
33.5 mm Black  
1936 Type F/1 4-Bar  
6 Jul 1964

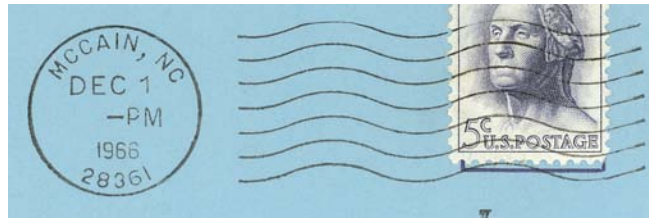
# HOKE COUNTY

## McCain (Cont.)

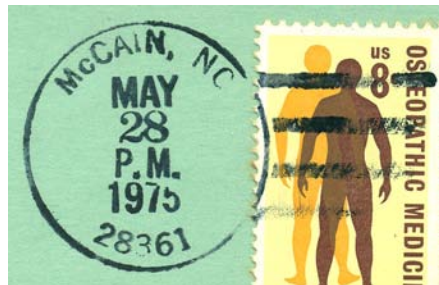
(Hoke)



Type 6  
34 mm Black  
1963 Type F/2 4-Bar (28361)  
27 May 1965



Type 7  
23 mm Black  
International Machine  
Type ATS/z 2721 (28361)  
1 Aug 1966  
14 Jul 1983



Type 8  
32.5 mm Black  
1963 Type F/2 4-Bar (28361)  
28 May 1975

## Raeford, from Cumberland County

(Hoke)

Anne C. Currie, Acting	17 Feb 1911
Neill McFayden	23 Feb 1911
Lacy M. Clark	25 Feb 1915
George W. Cox, Acting	1 Aug 1923
George W. Cox	19 Dec 1923
Lacy F. Clark, Acting	24 Apr 1936
Lacy F. Clark	19 May 1936
Charles E. Morrison, Acting	17 Dec 1952
Daniel C. Cox, Sr., Acting	30 Apr 1953
Daniel C. Cox, Sr.	18 Mar 1954



Type 1  
30 mm Black  
Metal Duplex Type H2  
17 Sep 1911  
15 Sep 1915



Type 2  
23 mm Black  
Columbia Machine  
Type G 1W  
26 Mar 1927  
23 Mar 1942

Charles Edward Morrison, Acting	8 Nov 1963
Charles Edward Morrison	22 Aug 1964



# HOKE COUNTY

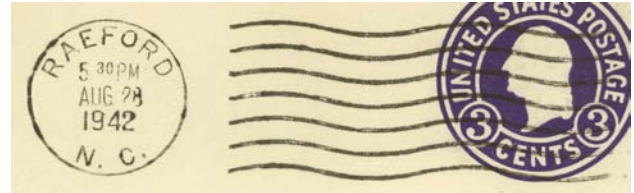
## Raeford (Cont.)

(Hoke)

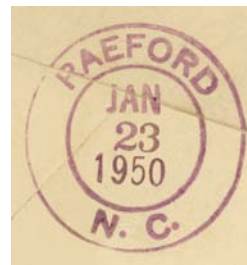
James G. Dunnagan Officer-In-Charge	1 Dec 1974
Joseph D. Carver	26 Apr 1975
Greg Rhiner Officer-In-Charge	20 Jan 1987
Clara B. Robinson	9 May 1987
Clara B. Hurte (surname changed)	4 Apr 1992
Clara B. Robinson (surname changed back)	12 Dec 1992
Louis Steve Holden	14 Sep 1996
Christa N. Engle	14 Jul 2001
Alice C. Roache Officer-In-Charge	27 Jan 2006
Michael Lee Sharp Officer-In-Charge	17 Jul 2006
Michael Lee Sharp	3 Feb 2007
Kathy McGirt Officer-In-Charge	14 Jan 2008
Wanda G. Marvell	11 Oct 2008
Alice C. Roache	16 Jul 2011
Eryc Lamont Hutto	5 Oct 2013
Linda M. Cooper	19 Sep 2015
Kimberly J. Joly Officer-In-Charge	25 Jun 2016
Carla A. Roache	20 Aug 2016
Charles F. Burke III Officer-In-Charge	1 Aug 2019
Peter J. Huntley	29 Feb 2020
Charles F. Burke III	7 May 2022



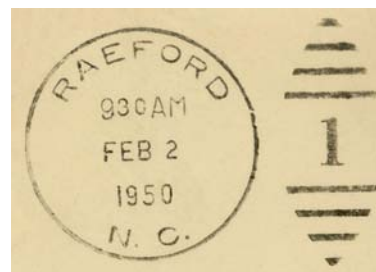
Type 3  
30 mm Black  
Metal Duplex Type H2  
9 May 1928  
7 Oct 1942



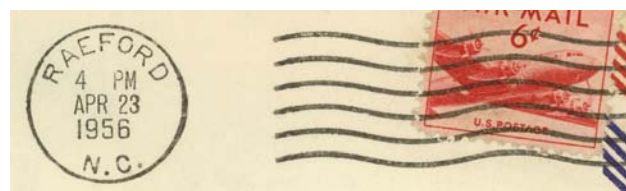
Type 4  
21 mm Black  
Universal Machine  
Type DT 200K  
28 Aug 1942  
9 Mar 1951



Type 5  
29.5 mm Magenta  
23 Jan 1950  
29 Sep 1954



Type 6  
30.5 mm Black  
Metal Duplex Type ?  
2 Feb 1950  
2 Nov 1962



Type 7  
21 mm Black  
Universal Machine  
Type DT 300  
7 Oct 1953  
21 Oct 1960

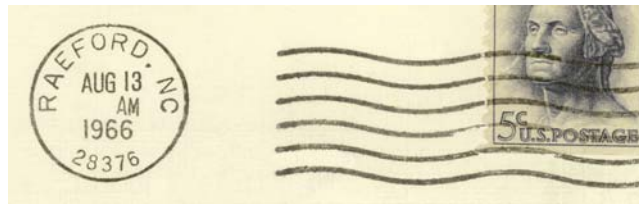
# HOKE COUNTY

Raeford (Cont.)

(Hoke)



Type 8  
32 mm Black  
Hanley hand-held roller  
6 Dec 1965



Type 9  
21 mm Black  
Universal Machine  
Type DTS/z 300 (28376)  
13 Aug 1966  
12 Jun 1967



Type 10  
32.5 mm Black  
1963 Type F/2 4-Bar (28376)  
15 Apr 1971  
22 Aug 1974



Type 11  
28.5 mm Red  
Self-Inking Postmarker (28376)  
12 Oct 1990



Type 12  
38 mm Red  
Self-Inking Postmarker (28376)  
13 Apr 1991

# HOKE COUNTY

Raeford (Cont.)

(Hoke)



Type 13  
28.5 mm Red  
Self-Inking Postmarker (28376)  
20 Sep 1993



Type 14  
44.5 mm Red  
Self-Inking Postmarker  
(28376-9998)  
27 Feb 2003

## Station Cancels

McCain Contract Post Office

17 Mar 1984

19 Aug 2002



Type 1  
29 mm Magenta  
20 Aug 1985  
14 Apr 1992



Type 2  
35.5 mm Red  
Self-Inking Postmarker (28361)  
8 Apr 1999



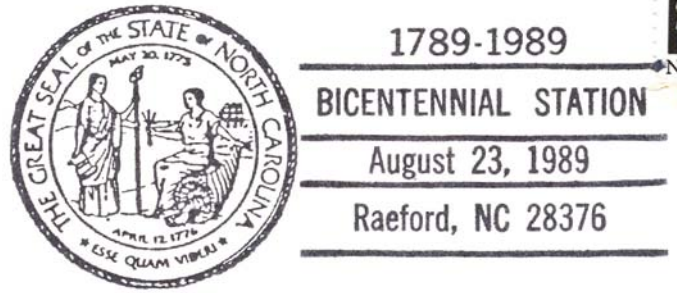
# HOKE COUNTY

## Raeford (Cont.)

(Hoke)

Temporary Station Cancels

Bicentennial Station



Type 1  
87 x 37.5 mm Black  
(28376)  
23 Aug 1989

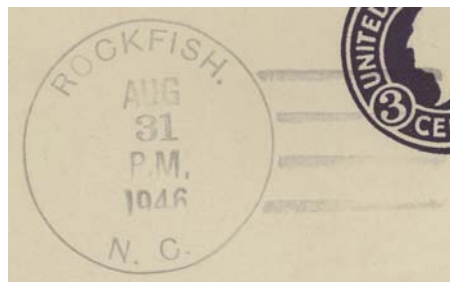
## Rockfish, from Cumberland County

(Hoke)

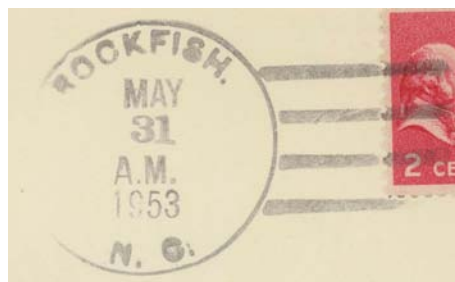
Mary H. Boseman	17 Feb 1911
Isabel R. Ritter, Acting	1 May 1942
Isabel R. Ritter	18 Jul 1942
Discontinued	30 Jun 1943
Lillie Wood, Acting	15 Jul 1943
Lillie Wood	9 Nov 1943
Discontinued	31 May 1953
Mail to Fayetteville, Cumberland County	



Type 1  
32.5 mm Black  
1910 Type B 4-Bar  
21 Jun 1916



Type 2  
33.5 mm Black  
1936 Type F/1 4-Bar  
31 Aug 1946  
22 Nov 1949



Type 3  
33 mm Black  
1936 Type F/1 4-Bar  
31 May 1953

## HOKE COUNTY

**Rockfish**, from Cumberland County

(Hoke)



Type 4  
30 mm Magenta  
31 May 1953

### Sanatorium

(Hoke)

Hughes B. Hoyle	22 Apr 1914
James W. Reid	28 Dec 1914
Lewis B. McBrayer	25 May 1915
Herbert O. Sink, Acting	1 Feb 1924
Herbert O. Sink	22 Apr 1924
Ernest B. Satterwhite, Acting	11 Jun 1926
Ernest B. Satterwhite	14 Dec 1926
Name changed to <b>McCain</b>	1 Jan 1948



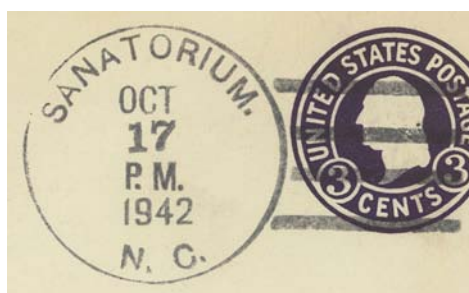
Type 1  
31.5 mm Black  
Metal Duplex  
Type Scarab  
20 Jan 1925



Type 2  
22 mm Black  
Columbia Machine  
Type G 2W  
27 Feb 1920  
14 Jun 1920



Type 3  
23 mm Black  
International Machine  
Type AT/S 2711  
9 Jan 1939  
9 Mar 1942



Type 4  
34.5 mm Black  
1936 Type F/1 4-Bar  
17 Oct 1942  
23 Oct 1943

# HOKE COUNTY

## Sanatorium (Cont.)

(Hoke)



Type 5  
33 mm Black  
1936 Type F/1 4-Bar  
31 Dec 1947

## Timberland, from Cumberland County

(Hoke)

Neill A. McDonald	17 Feb 1911
Minnie B. McDonald, Acting	1 Feb 1940
Minnie B. McDonald	4 Nov 1940
Discontinued	31 Dec 1948
Mail to Raeford	



Type 1  
32 mm Black  
1910 Type B 4-Bar  
3 Jul 1917



Type 2  
34 mm Black  
1931 Type C/2 4-Bar  
12 Aug 1938  
30 Oct 1941



Type 3  
34 mm Black  
1936 Type F/1 4-Bar  
31 Dec 1948